



TS1110 TIER 2 PC ADVANCED POWERSTRIP+

Reduces active and standby power wasted by computers while offering premium fireproof surge protection

OVERVIEW

The PC Advanced PowerStrip+ (PC APS+) provides premium-quality surge protection while reducing active and standby power wasted by computers and related electronics. The PC APS+ is a plug-and-play Tier 2 APS that supports all operating systems and requires no special software or additional programming, making it ideal for both home and commercial offices.

HOW IT WORKS

The PC APS+ includes a highly-accurate sensor with an adjustable countdown timer that connects to the computer via USB. Each time the sensor detects movement near the computer - typing on the keyboard or using the mouse - the countdown timer resets.

If no movement is detected in the sensing area during the countdown timer period, a sleep command is sent to the computer putting the computer and monitor to sleep, and the devices plugged into the switched outlets automatically turn off.

EXCELLENT FOR ADMINS

The PC APS+ is excellent for administrators who are focused on network security, especially those who do not wish to have additional power management software installed on company computers or the network. It is also a great solution for smaller networks that are unable to justify the cost of network-based power management software or a dedicated network administrator. TrickleStar's PC APS+ is the only commercial Tier 2 APS that is compatible with Windows®, Linux® and Mac® operating systems, and can work either independently or in conjunction with other power management tools to maximize energy savings.

PREMIUM FIREPROOF SURGE PROTECTION

Traditional surge protectors use standard Metal Oxide Varistors (MOVs). All TrickleStar APSs incorporate ceramic-encased MOVs, which are capable of suppressing more energy and dissipating heat faster than a traditional MOVs. This makes them fireproof during most surges.

The AV APS+ uses a high-quality, dedicated circuit breaker that is safer than combined circuit breaker switches found in other products. Multiple thermal-safety fuses (above the industry standard) safely shut down the AV APS+ in over-temperature conditions, and an FR-4 rated PCB means the AV APS+ has better temperature resistance and mechanical properties versus other products. These superior mechanical properties provide the highest degree of protection available.

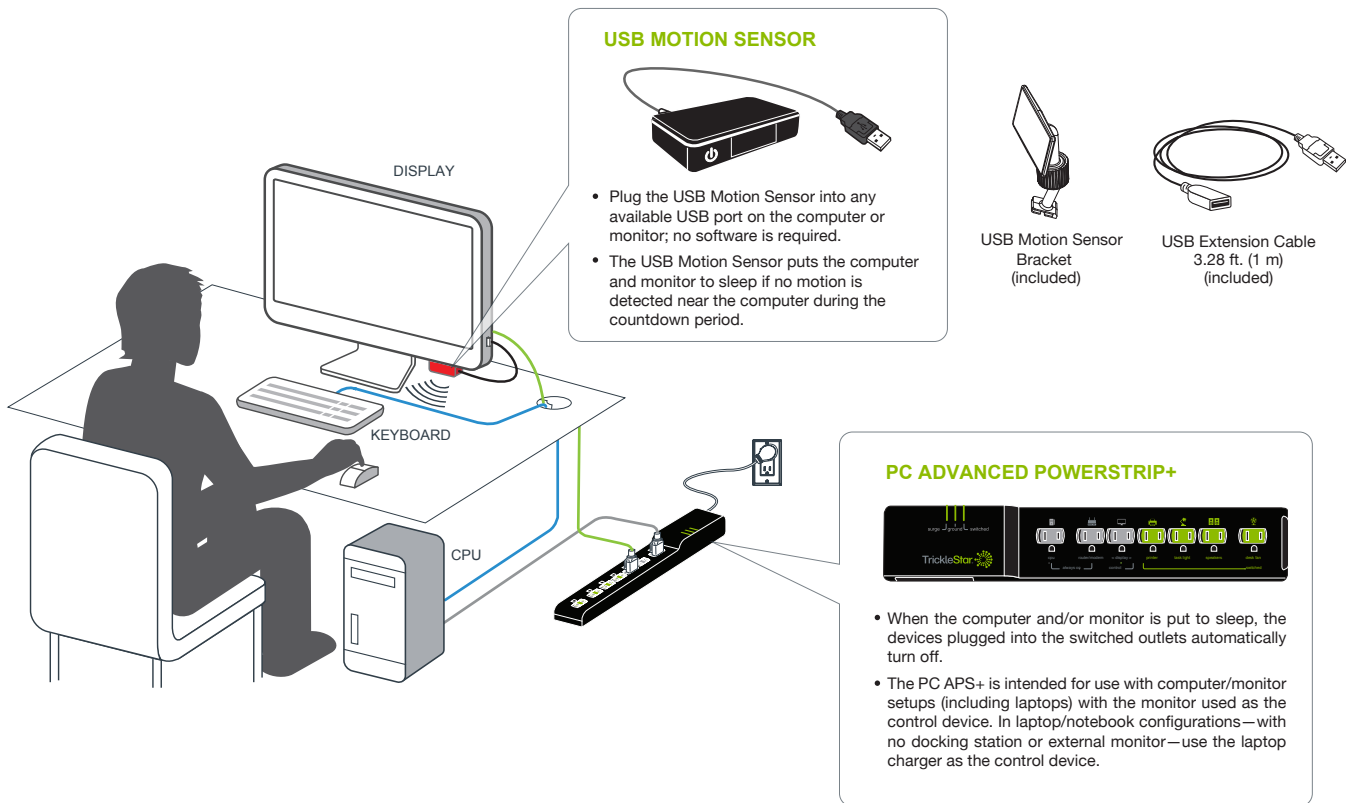
PRODUCT WARRANTIES

10-Year Product Warranty
\$100,000 Connected Equipment Warranty

KEY FEATURES

- 7 outlets:
 - 2 always-on (1 transformer-spaced)
 - 4 switched (1 transformer-spaced)
 - 1 control outlet
- Compatible with Windows®, Linux® and Mac® operating systems
- No additional hardware or software required
- Includes a highly-accurate USB motion sensor with an adjustable countdown timer
- LED light flashes red/blue prior to shutdown
- Quick activation button on sensor for manual operation
- 1,080 joules of premium fireproof surge protection
- LED status indicators (ground, surge, switched)
- <40 dB noise filtering
- 3 ft. heavy-duty power cord with space-saving, angled plug

SETUP GUIDE



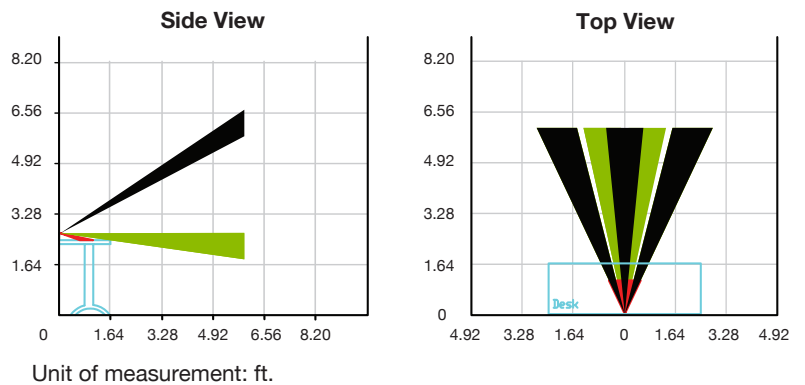
SENSOR ELECTRICAL SPECIFICATIONS

USB MOTION SENSOR

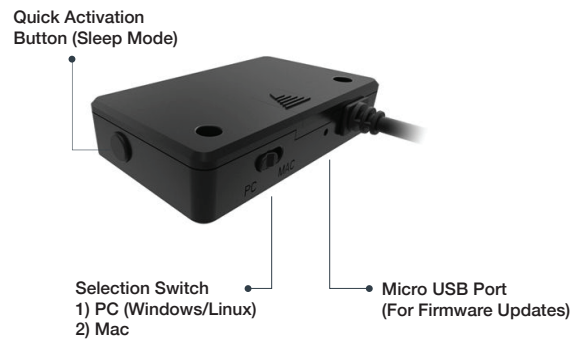
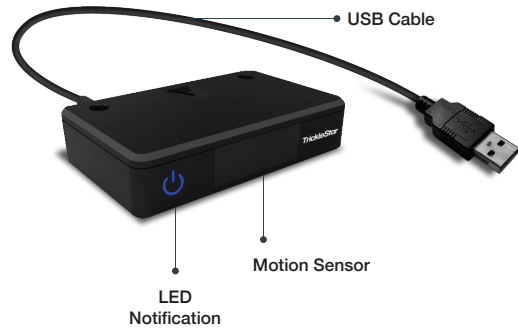
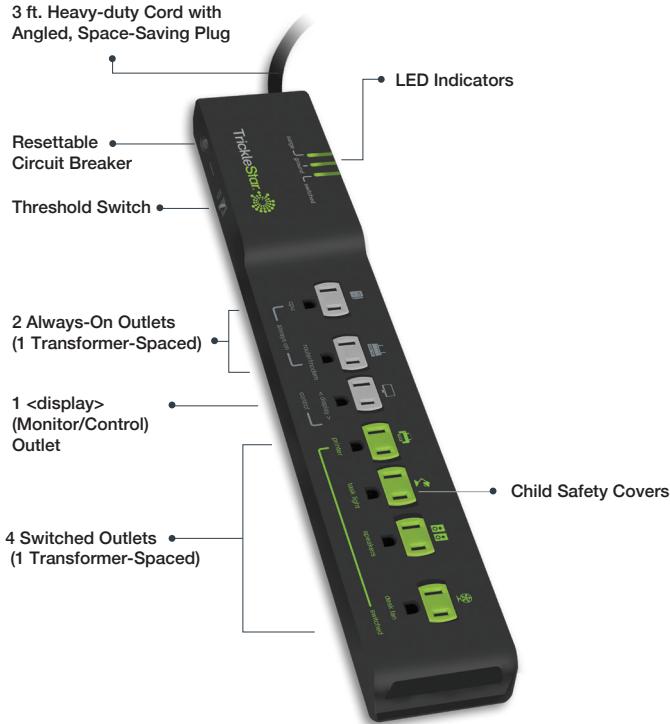
FOR INDOOR USE ONLY

Voltage	5 VDC
Cord Length	12 in.
Connector	USB (male)
Switch Type	Momentary and slide
LED	Dual color (red and blue)
Motion Detection Range	6 ft.
Motion Detection Angle	50 degrees

SENSOR OPTICAL VIEW PATTERN



FEATURE DIAGRAM



APS ELECTRICAL SPECIFICATIONS

FOR INDOOR USE ONLY

Voltage	120 VAC +/- 10% 60 Hz
Power Rating	15 Amps
Switching Thresholds	10W/22W/42W
Surge Protection	72,000 Amps/1,080 Joules
Noise Filtering	<40 dB
Power Consumption	<1 Watt
Voltage Protection Rating	500 Volts L-N 500 Volts L-G 500 Volts N-G
RJ11	3.3V + Optically isolated

PHYSICAL SPECIFICATIONS

Operating Temperature	32° to 113° F
Storage Temperature	14° to 140° F
Humidity	5 to 90% N/C
IP Rating	IP20

APPROVALS

Conforms to product standards for safety and EMC.
 UL (US & Canada), 2002/95/EG (RoHs), 2002/96/EC (WEEE),
 1999/5/EC (RTTE)
 Relocatable Power Taps, UL 1363
 Standard for Surge Protective Devices, UL 1449



PRODUCT DETAILS

TS1110

7-Outlet PC Advanced PowerStrip+
USB Motion Sensor