



## TS0006 TIER 1 ADVANCED **POWERTAP**

Reduces standby power wasted by TV and computer setups while providing premium fireproof surge protection

### OVERVIEW

Standby power, also commonly referred to as vampire power or phantom load, is the energy electronics continue to draw when they are plugged in, but turned off. The TrickleStar TS0006 Tier 1 Advanced PowerTap provides premium, fireproof surge protection and helps eliminate standby power wasted by PC and TV peripherals.

The Advanced PowerTap works on a simple control/switched basis. When the control device, typically a TV or computer, is on, the switched outlets will have power and the devices plugged into them can be used. When the control device is turned off (or goes into a power-saving mode), the devices plugged into the switched outlets automatically turn off and stop drawing standby power. This saves energy, which trims the user's electric bill to save them a bit of money.

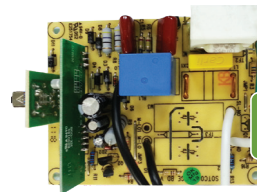
### KEY FEATURES

- 4 outlets:
  - 1 control
  - 1 always-on
  - 2 switched
- 1,080 Joules of surge protection
- Adjustable threshold switch ensures TV/PC compatibility
- Consumes <1 Watt at all times
- LED status indicators (ground, surge, switched)
- Low-profile, wall-mount design
- Includes an outlet screw for more permanent applications

### PREMIUM FIREPROOF SURGE PROTECTION

Traditional surge suppression products use standard Metal Oxide Varistors (MOVs). TrickleStar's Advanced PowerTap uses a ceramic-encased MOV, which suppresses more energy and dissipates heat faster than a traditional MOV.

Ceramic-encased MOVs also have a lifespan up to three times longer than standard MOVs, so our PowerTap will protect electronics from surges for longer.



**Ceramic Encased**  
Fireproof MOV

### EMI/RFI NOISE FILTERING

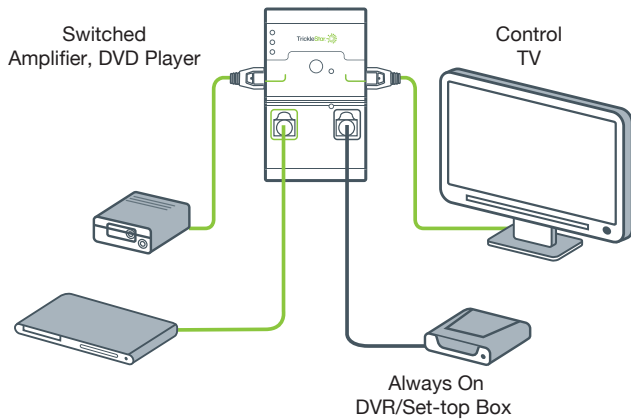
The TS0006 features advanced noise filtering circuitry that reduces electromagnetic interference (EMI) and radio frequency interference (RFI), delivering cleaner power, and improved video and sound quality.

### PRODUCT WARRANTIES

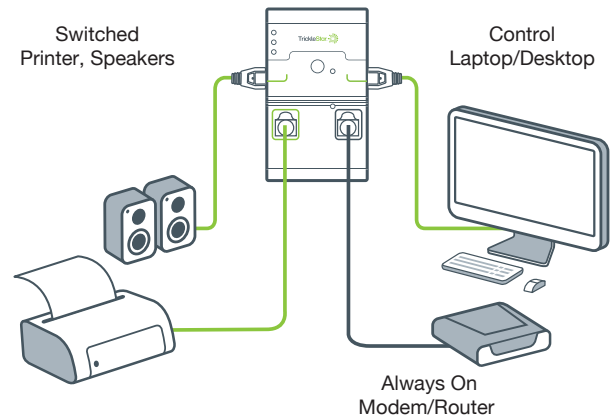
- 10-Year Lifetime Product Warranty
- \$20,000 Connected Equipment Warranty

## SETUP GUIDE

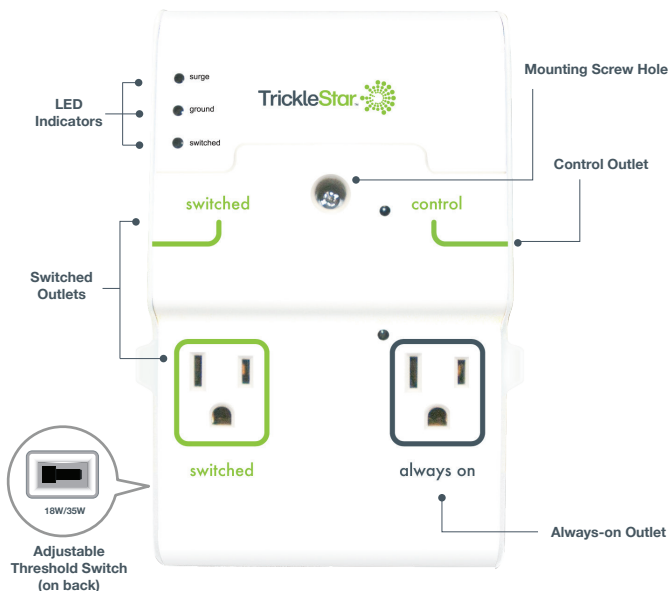
### TV



### PC



## FEATURE DIAGRAM



## ELECTRICAL SPECIFICATIONS

### FOR INDOOR USE ONLY

<b>Voltage</b>	120 VAC +/- 10%, 60 Hz
<b>Power Rating</b>	15 Amps
<b>Surge Protection</b>	72,000 Amps/1,080 Joules
<b>Noise Filtering</b>	<40 dB
<b>Standby Power Consumption</b>	<1 Watt

## PHYSICAL SPECIFICATIONS

<b>Operating Temperature</b>	32° to 113° F
<b>Storage Temperature</b>	14° to 140° F
<b>Humidity</b>	5 to 90% N/C
<b>IP Rating</b>	IP20

## APPROVALS

Conformity to product standards for safety and EMC.  
 2002/95/EG (RoHS), 2002/96/EC (WEEE), 1999/5/EC (RTTE)  
 Solid-State Controls for Appliance, UL 244A & CSA C22.2 No. 14-10  
 Relocatable Power Taps, UL 1363  
 Standard for Surge Protective Devices, UL 1449



## ORDERING INFORMATION

TS0006 4-Outlet Advanced PowerTap, 1,080 Joules