



Innsbrook Traditional & Loft Contemporary Direct-Vent Fireplace Insert Systems

Innsbrook 28,500 Btu Direct-Vent Fireplace Insert shown with Washed Brick Liner, Surround in Matte Black, and Horizon Decorative Doors (non-operable) in Matte Black



White Mountain Hearth – The Pinnacle of Efficiency



Innsbrook Traditional & Loft Contemporary

A Direct-Vent Fireplace Insert turns your existing wood-burning fireplace into an efficient gas-fired heat source.

A wood-burning fireplace sends more than half of its heat up the flue, creating negative pressure in your home, which draws in outside air through gaps in doors and windows that actually makes your home colder. A wood-fire can also create ash and fumes that dirty your home and aggravate your allergies.

Direct-Vent Fireplace Inserts are classified as zone heating appliances. Zone heating is inherently more efficient than your existing wood-burning fireplace or your central furnace. Unlike a central furnace, which wastes 20 to 30 percent of the heat energy through ductwork losses and sends much of the remaining heat to unoccupied rooms, zone heating creates and transmits the heat directly into the room. This lets you turn down your whole-house thermostat and use your fireplace insert to efficiently warm the room you use most.

Our Direct-Vent insert uses readily available 3-inch flexible co-linear vent pipes. One draws air from outside your home, and the other sends flue products directly outdoors. The flexible metal venting allows the insert to install easily in a site-built or manufactured fireplace.

Fireplace barrier screens, required for all direct-vent systems, protect you and your family from inadvertently touching the hot glass.

Standard Features

We offer our traditional Innsbrook Direct-Vent Inserts in three sizes – small, medium, and large – to fit most wood-burning fireplaces. Choose Millivolt ignition with standing pilot to provide heat, even in the absence of electric power, or our Green Earth Preferred Intermittent Pilot, which saves even more energy. IP systems can operate with a standing or intermittent pilot during power outages.



Our Innsbrook Direct-Vent inserts feature optional liners and hand-painted ceramic fiber logs, nestled atop the variable flame height burner, to create an exceptionally attractive traditional fireplace. With inputs of 20,500 Btu, 26,000 Btu, and 28,500 Btu, the Direct-Vent insert's unique Slope Glaze Burner produces natural flickering flames that dance and delight – warming your heart as it warms your soles.

Awaken your inner artist with a Loft Series Contemporary Direct-Vent Insert – in small (20,000 Btu) or medium (27,000 Btu). Choose Millivolt ignition or Intermittent Pilot. The black porcelain lining inside the Loft insert reflects the mesmerizing flame from the contemporary linear burner to create depth and visual interest from any angle.

Surrounds available in Steel (Traditional & Contemporary) and Cast Iron (Traditional only)

Included Barrier Screen protects against contact with the hot glass.

Slide-on vent plate simplifies installation in tight spaces.

Built-in variable-speed blower automatically cycles on and off to gently and quietly circulate the heat (Standard on Traditional, standard on Contemporary [not shown])

Ceramic fiber Washed Brick Liner (Traditional Inserts)

Horizon Doors in Matte Black (Traditional Inserts)

Large heat-resistant ceramic glass window provides greater heat transfer.

A black rectangular vent plate with two circular openings, designed to fit into a fireplace opening.

Options & Accessories



Loft 27,000 Btu Direct-Vent Fireplace Insert shown with Polished Black Decorative Glass and Matte Black metal surround.

Options & Accessories

Your new direct-vent insert will require a surround or decorative front.

Insert surrounds come in three styles. For Innsbrook traditional models, choose an old-world style three-piece cast iron surround with rich details at the corners, keystone, and columns, or one of our steel surrounds with either 6-inch top and sides, or 6-inch top and 3-inch sides. For installations where your Innsbrook insert does not rest on the hearth, we offer a 1 5/16-inch bottom cover to complete the surround.

Decorative Fronts for traditional inserts are available in three styles in black or bronze finishes. Each front attaches in minutes to the 1-piece metal frame (available in Matte Black or Bronze). Included barrier screens protect you and your family from inadvertently touching the hot glass – but without detracting from the overall view of the fireplace.

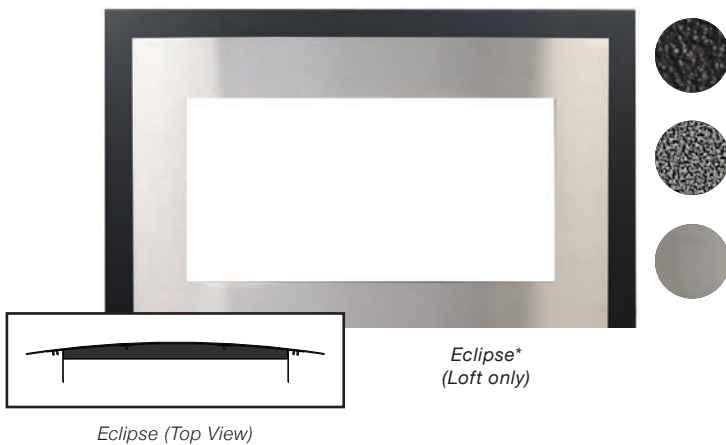
To cover larger hearth openings, install the optional shroud. At 48 inches wide and just under 38 inches tall, it provides a clean transition between the surround and the existing fireplace. The 2-inch bottom cover completes the shroud.

Accessories

Direct-Vent Loft Inserts require a decorative front with barrier to protect against touching the hot glass

Decorative Fronts and Glass for Loft Contemporary Inserts

For the Loft DV Insert, choose a matching contemporary surround in all black or in black and stainless steel. The bold stainless steel panels top and bottom accentuate the clean horizontal look of the Loft Insert. Complete your Loft insert with decorative glass – available in Black Polished, Blue Clear, Clear Frost, Bronze Reflective, and Copper Reflective. Additional colors are available through your local hearth dealer.



Loft Series insert with surround in Matte Black and Stainless Steel.



Decorative Glass for the Loft Series fireplace can be placed on the floor of the firebox and is available in Polished Black, Clear Frost, Blue Clear, Bronze Reflective, and Copper Reflective

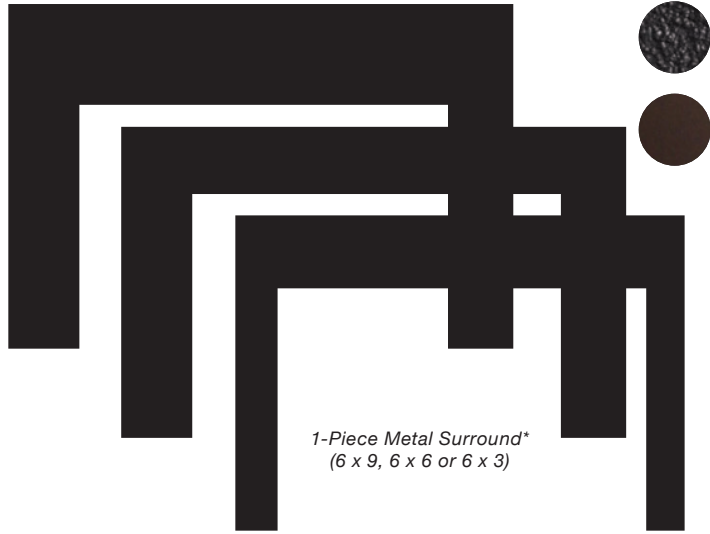
**Requires 1-piece Metal Frame for Installation.*

Surrounds for Innsbrook Traditional Inserts

Insert Surrounds Available in Matte Black Only
 Note: Cast Iron Surrounds require SAK(20, 26, 28) Adapter Kits



Cast Iron Surround



1-Piece Metal Surround*
 (6 x 9, 6 x 6 or 6 x 3)

*Bottom Covers for 1-piece Metal Surround available in both finishes.

Decorative Fronts, Doors, or Trim for Innsbrook Traditional Inserts



Lancaster Front**
 (Traditional and Loft)



Transom Doors**



Horizon Doors**



Black Trim (No Front or Doors)

**Requires 1-piece Metal Frame for Installation.



Bronze

Matte Black

Liners for Innsbrook Traditional Inserts



Traditional Brick



Banded Brick



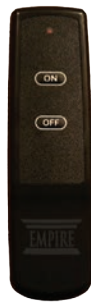
Washed Brick



Black Porcelain

Control Options for Direct-Vent Inserts

Lighting and managing a wood fire takes time and work – and more than a little patience to get it right. Your Innsbrook or Loft fireplace insert lights at the flick of a switch to produce consistent, reliable heat, even when electric power fails. Add the convenience of an optional thermostat, wireless wall thermostat, remote control, or thermostat remote control, and enjoy all the comfort of a warm cozy fire without the mess and hassle.



*FRBC
Remote
Millivolt Only*



*FRBTC
Thermostat Remote Control
Millivolt or IP*



*FWS
Wall Switch
Millivolt or IP*



*TRW Wireless
Wall Thermostat
Millivolt or IP*

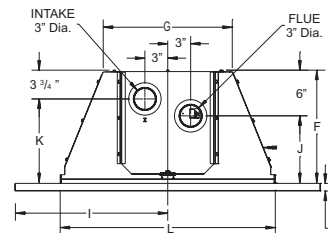
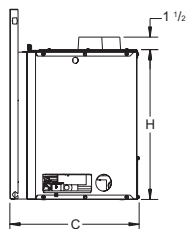
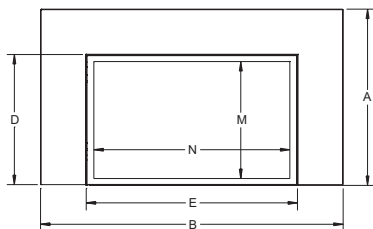


*TMV
Wall Thermostat
Millivolt or IP*

Traditional Direct-Vent Insert Dimensions

| Model | A | B | C | D | E | F | G | H | I | J | K | L | M | N |
|------------------------------------|--------|----|--------|--------|--------|--------|--------|--------|--------|---------|---------|---------|--------|----------|
| DVC20 with 1-in Surround Depth | 23 1/4 | 40 | 15 7/8 | 17 1/4 | 27 7/8 | 14 7/8 | 17 | 18 1/2 | 20 | 8 7/8 | 11 3/16 | 28 3/16 | 15 1/2 | 25 15/16 |
| DVC20 with 2 1/4-in Surround Depth | 23 1/4 | 40 | 15 7/8 | 17 1/4 | 27 7/8 | 13 5/8 | 17 | 18 1/2 | 20 | 7 5/8 | 9 15/16 | 28 3/16 | 15 1/2 | 25 15/16 |
| DVC26IN | 26 1/4 | 43 | 17 5/8 | 20 1/4 | 30 7/8 | 16 5/8 | 18 3/4 | 21 1/2 | 21 1/2 | 10 9/16 | 12 7/8 | 31 3/16 | 18 1/2 | 28 15/16 |
| DVC28IN | 28 1/4 | 46 | 17 5/8 | 22 1/4 | 33 7/8 | 16 5/8 | 21 3/4 | 23 1/2 | 23 | 10 9/16 | 12 7/8 | 34 3/16 | 20 1/2 | 31 15/16 |

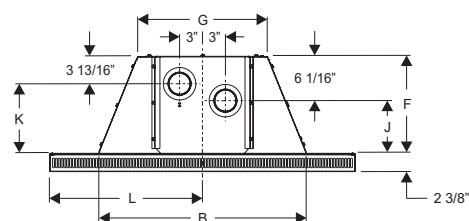
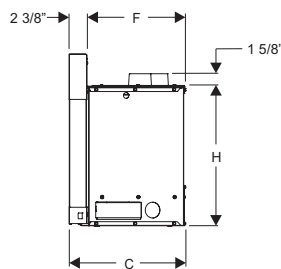
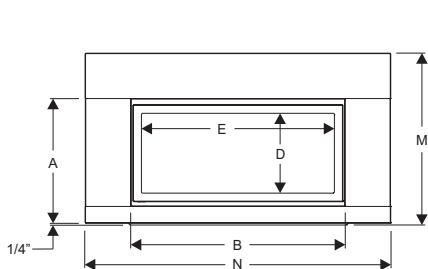
Note: Illustrations shown are based on Direct-Vent models with 6 x 6-inch metal surround.



Loft Direct-Vent Insert Dimensions

| Model | A | B | C | D | E | F | G | H | I | J | K | L | M | N |
|---------|--------|----|--------|---------|--------|--------|--------|---------|----|---------|---------|--------|--------|----|
| DVL25IN | 16 1/4 | 28 | 15 1/4 | 10 7/16 | 25 1/4 | 12 3/4 | 17 | 18 5/16 | 27 | 6 11/16 | 8 13/16 | 20 | 22 1/2 | 40 |
| DVL33IN | 19 1/4 | 31 | 16 3/4 | 13 7/16 | 28 1/4 | 14 1/4 | 18 3/4 | 21 5/16 | 30 | 8 3/16 | 10 7/16 | 21 1/2 | 25 1/2 | 43 |

Note: Illustrations shown are based on Direct-Vent models with 6 x 6 x 2-inch metal surround.

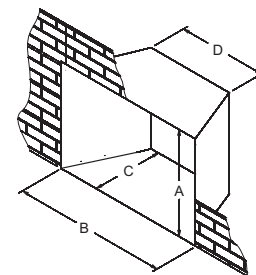


Minimum Fireplace Opening Dimensions

| Model | A | B | C | D |
|---------|--------|--------|-------------------|--------|
| DVC20IN | 18 1/2 | 28 1/4 | 14 7/8 or 13 5/8* | 17 1/4 |
| DVC26IN | 21 1/2 | 31 1/4 | 16 5/8 | 19 |
| DVC28IN | 23 1/2 | 34 1/4 | 16 5/8 | 22 |
| DVL25IN | 18 3/8 | 27 1/2 | 12 3/4 | 17 1/4 |
| DVL33IN | 21 3/8 | 30 1/2 | 14 1/4 | 19 |

*14 7/8 with 1-inch deep surround; 13 5/8 with 2 1/4-inch deep surround.

Note: On Direct-Vent installations, if the fireplace lintel is wider than 8" (203 mm), the height of the fireplace opening must be increased a few inches to allow for a gradual offset in the exhaust and/or intake vent pipes.



| Gas Inlet | | Warranty |
|------------------------------|--------------------------------------|--|
| Type of Gas (State on Order) | Natural or LP | 10-year limited warranty on combustion chamber, limited lifetime on glass. All other parts carry a three-year limited warranty. All remote controls carry a one-year limited warranty. |
| Iron Pipe Size | 1/2 inch | |
| Ignition Systems | Standing Pilot or Intermittent Pilot | |
| Venting | 3x3 inch Flex Vent | |

Empire Comfort Systems Inc. has manufactured safe, reliable gas-fired decorative appliances and heating systems since 1932. We take pride in our reputation for quality products, backed by the best sales, service, and distribution network in this industry. These fireplaces combine proven technologies with exceptional artistry and craftsmanship to enhance the ambiance of any home.



SINCE 1932

Empire Comfort Systems Inc.
918 Freeburg Ave.
Belleville, IL 62220-2623
info@empirecomfort.com
WMH-00769 9/20/16

Member of the following industry associations:



The Empire Comfort Systems and White Mountain Hearth names and logos are registered U.S. trademarks.