

INSTALLATION AND OPERATION GUIDE FOR CONTROL SYSTEM CONCEALER

Variable Flame Electronic Pilot Kit (CSC) with Floor (NMX-RC)

Installation and service must be provided by a qualified installer, service agency or the gas supplier.

FOR YOUR SAFETY

WHAT TO DO IF YOU SMELL GAS

1. Open windows.
2. Extinguish all open flames.
3. Do not try to light any appliance.
4. Do not touch any electrical switch; do not use the phone in your building.
5. Immediately call your gas supplier from a neighbor's phone. Follow the gas supplier's instructions.
6. If you cannot reach your gas supplier, call the fire department.

WARNING

To avoid a potential fire hazard, do not disassemble or attempt to repair the safety gas valve. Disassembly, reassembly or internal adjustment could cause the valve to malfunction, resulting in property damage, personal injury, or death. If the control valve does not operate properly following the installation or service, replace the unit.

FOR YOUR SAFETY

DO NOT STORE OR USE GASOLINE OR OTHER FLAMMABLE LIQUIDS OR FLAMMABLE VAPORS IN THE VICINITY OF THIS OR ANY OTHER APPLIANCE.

CAUTIONS

1. This valve should be installed only by a qualified service technician trained in gas safety equipment.
2. Turn off the gas supply before installing the valve.
3. All piping must meet applicable local codes and ordinances and the National Fuel Gas Code (ANSI Z223.1/NFPA NO.54)
4. All wiring must meet the applicable electrical codes and ordinances.
5. Assure that the complete system is operating according to the manufacturer's instructions after installing the Parts Only Kit.
6. Prior to installation, verify conformance with the log unit's installation instructions.
7. Assure that all the piping is free of any foreign matter.

INSTALLING A HARGROVE SAFETY GAS VALVE IN A LOCATION OTHER THAN SPECIFIED IN THIS MANUAL WILL VOID THE WARRANTY EXCEPT WHEN THE SAFETY GAS VALVE IS INSTALLED OUTSIDE THE FIREBOX IN A SAFE AND PROPER INSTALLATION AND ACCESS IS PROVIDED FOR MAINTENANCE AND REPAIR OF THE SYSTEM. A QUALIFIED INSTALLER MUST MAKE INSTALLATION AND ADJUSTMENTS.

FOR YOUR SAFETY

WARNING: If you do not follow these instructions exactly, a fire or explosion may occur resulting in property damage, personal injury, or loss of life.



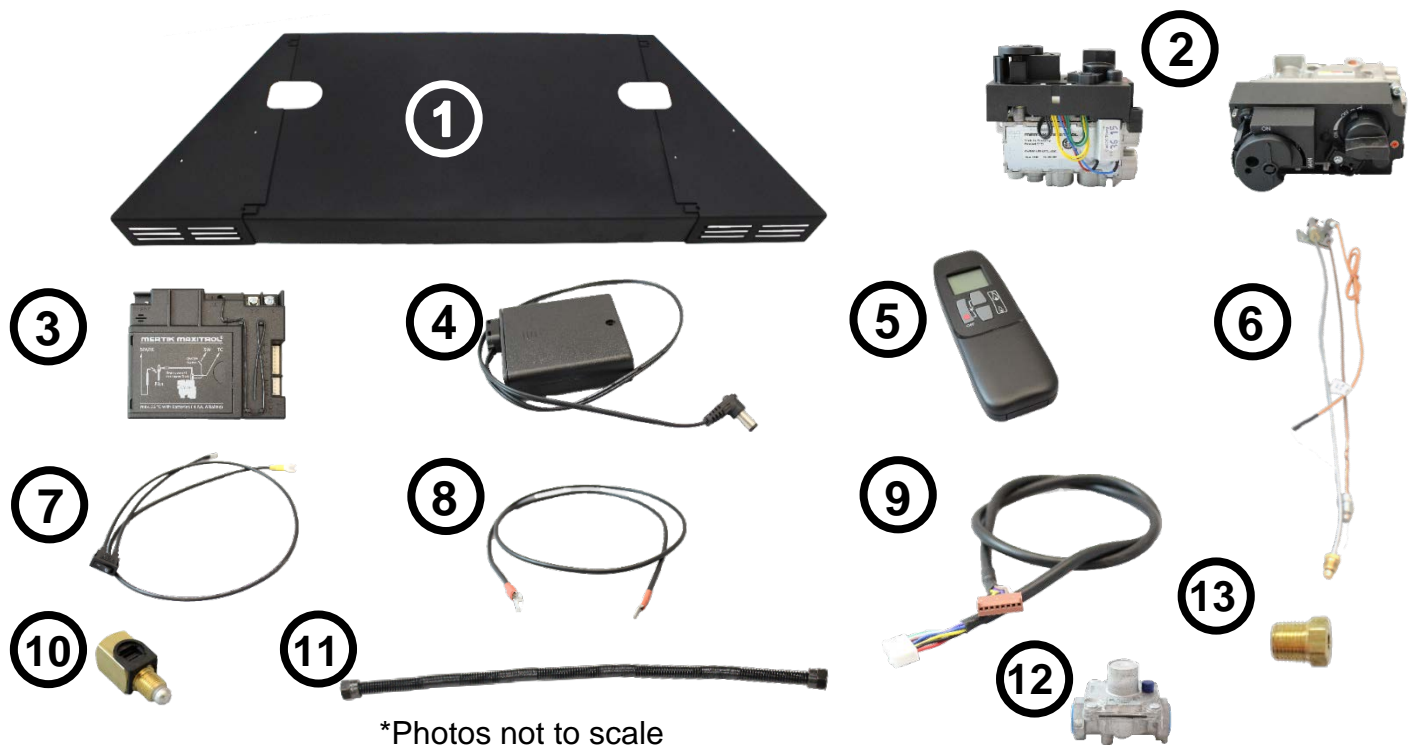
SPECIFICATIONS AND DIMENSIONS

Reference Table I to make sure that the Control System Concealer (CSC) will fit on the floor of your fireplace. Gas log set sizes do not have to match the CSC size as long as the CSC fits in the fireplace and the log set fits on the CSC. Do not use more than one size lower than your gas log set size. Example: A 30" log set can use either a 30" CSC or a 24" CSC, but not an 18" CSC.

TABLE I

| SET SIZE | FRONT WIDTH | BACK WIDTH | DEPTH | HEIGHT |
|----------|-------------|------------|-------|--------|
| 18" | 28.75" | 17" | 12.5" | 2.5" |
| 24" | 35.75" | 23" | 12.5" | 2.5" |
| 30" | 40.75" | 29" | 12.5" | 2.5" |
| 36" | 46.75" | 35" | 12.5" | 2.5" |

PARTS LIST



*Photos not to scale

| <u>ITEM</u> | <u>PART NUMBER</u> | <u>DESCRIPTION</u> |
|-------------|----------------------|--|
| 1 | CSC-18, 24, 30, 36 | Control Systems Concealer (CSC) |
| 2 | MEI-V | GV60 Gas Control Valve |
| 3 | MEI-REC | Control Module/Receiver |
| 4 | MEI-BP | External Battery Pack (optional use) |
| 5 | MEI-REM | Remote Transmitter |
| 6 | MEI-PIL | Pilot Assembly |
| 7 | MEI-SW | Rocker Switch |
| 8 | MEI-TC | Thermocouple Connecting Wire |
| 9 | MEI-WH | 8 Pin Wiring Harness |
| 10 | MEI-INT | Interrupter Block for Thermocouple |
| 11 | FCNW-18 | Non-whistling Gas Flex Connector |
| 12 | REG-4 | Gas Regulator |
| 13 | PPH-2 | Pre Drilled Brass Orifice |
| 14 | SW-CSC18, 24, 30, 36 | Superwool Insulation (mounted under CSC) |

GAS CONNECTION and SETUP

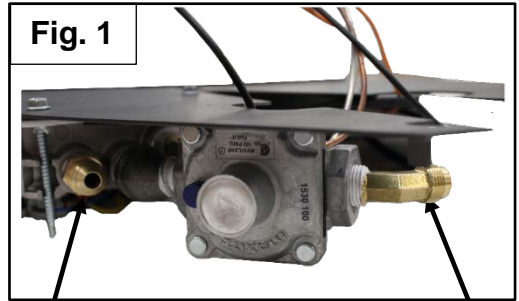
IMPORTANT : The minimum inlet supply pressure for the purpose of input adjustment is 5.0 inches (natural gas) 11 inches (propane gas) in water column. The maximum inlet supply pressure is 10.5 inches (natural gas) 13 inches (propane gas) in water column.

Check that the gas is turned off.

The gas supply line should be ½" inside diameter (ID) up to 30 feet and ¾" for longer distance.

Use the non-whistling flex connector provided in the accessory kit to connect the gas supply to the burner kit. See figure 1.

Hook up the flex connector from your burner kit to the valve. See figure 1.



Connect to burner Connect to gas

IMPORTANT : Use the orifice provided with this kit to replace any orifice you already have. Failure to do so will result in restricted gas flow and low flame height.

CONCEALER POSITIONING

Check that the gas is turned off.

Make sure that all connections are secure including wires.

Place the center piece of the CSC floor in the fireplace. As you place the right wing on, make sure to run the pilot and flex connector through the hole. See figure 2.

Run the Control Module (MEI-REC) underneath the center piece so it rests underneath the left wing. See figure 3.

Install batteries into the External Battery Pack (MEI-BP) and plug it into the Control Module. The External Battery Pack will set out from underneath the CSC wing if there is room. It can be covered with volcanic cinder to hide it. (**NOTE: When using the external battery pack, batteries in the control module are not required.**)

Install battery into the remote control. Hold reset button on MEI-REC until you hear 2 beeps, then push and hold the low flame button on the remote until it beeps again. Your remote and receiver should now be synced.

Place left wing over the Control Module and center entire CSC floor in the fireplace.

Center the burner on the CSC floor. The burner should be located under the flue opening.

IMPORTANT: If you haven't already, change the orifice in your burner pan with the one included in this kit.

Fig. 2



CONCEALER POSITION

Fig. 3



CONTROL MODULE PLACEMENT

NOTE- if the floor is recessed or glass doors are installed, burner must be elevated with firebrick or equivalent to ensure proper air flow over valve systems.

For any additional trouble shooting, refer to the GV60 installation and operating instructions attached.