



# Premium Products

---

# Vented Gas Logs

## Radiant Heat Series

---

Radiant Heat logs redefine the role of a vented gas log set. Our revolutionary molding process captures all the detail you expect from Hargrove in ceramic fiber with **3x's the heat of a standard refractory concrete vented gas log set.**



### Aspen Timbers

- Available in 4 sizes 21"-36"
- Single Side and See-Thru Sets Available
- Works with E-Burner, H-Burner, HC Burner and System 4 Burner



### Canyon Timbers

- Available in 4 sizes 21"-36"
- Single Side and See-Thru Sets Available
- Works with E-Burner, H-Burner, HC Burner and System 4 Burner



### Cross Timbers

- Available in 4 sizes 21"-36"
- Single Side and See-Thru Sets Available
- Works with E-Burner, H-Burner, HC Burner and System 4 Burner



### Rustic Timbers

- Available in 4 sizes 21"-36"
- Single Side and See-Thru Sets Available
- Works with E-Burner, H-Burner, HC Burner and System 4 Burner



### Woodland Timbers

- Available in 4 sizes 21"-36"
- Single Side and See-Thru Sets Available
- Works with E-Burner, H-Burner, HC Burner and System 4 Burner

# Charred Series



## Blazing Pecan

- Available in 4 sizes 18"-30"
- Single Side Sets Available
- Works with E-Burner, H-Burner, HC Burner and System 4 Burner



## Inferno Series

- Available in 4 sizes 18"-30"
- Single Side and See-Thru Sets Available
- Works with E-Burner, H-Burner, HC Burner and System 4 Burner



## Magnificent Inferno

- Available in 4 sizes 21"-36"
- Single Side and See-Thru Sets Available
- Works with E-Burner, H-Burner, HC Burner and System 4 Burner



## Supreme Ponderosa

- Available in 6 sizes 24"-60"
- Single Side and See-Thru Sets Available
- Works with E-Burner, H-Burner, HC Burner and System 4 Burner



## Twilight Inferno

- Available in 4 sizes 21"-36"
- Single Side Sets Available
- Works with E-Burner, H-Burner, HC Burner and System 4 Burner

# Contemporary Series



## Cannon Balls

- Available in 3 sizes 18"-30"
- All Sets are See-Thru or Single Side compatible
- Utilizes Full-Pan Burner System



## Driftwood

- Available in 3 sizes 18"-30"
- All Sets are See-Thru or Single Side compatible
- Utilizes Full-Pan Burner System



## Blue Glass

- Available in 3 sizes 18"-30"
- All Sets are See-Thru or Single Side compatible
- Utilizes Full-Pan Burner System



## River Stones

- Available in 3 sizes 18"-30"
- All Sets are See-Thru or Single Side compatible
- Utilizes Full-Pan Burner System

# Coal Baskets



## Coal Basket with Coals

- Designed for small fireplaces (19" width)
- Hides valve controls



## Coal Basket with Logs

- Designed for small fireplaces (19" width)
- Hides valve controls

# Fresh Cut Series



## Classic Oak

- Available in 5 sizes 15”-30”
- Single Side and See-Thru Sets Available
- Works with E-Burner, H-Burner, HC Burner and System 4 Burner



## Driftwood

- Available in 3 sizes 18”-28”
- Single Side and See-Thru Sets Available
- Works with E-Burner, H-Burner, HC Burner and System 4 Burner



## Grand Oak

- Available in 8 sizes 18”-48”
- Single Side and See-Thru Sets Available
- Works with E-Burner, H-Burner, HC Burner and System 4 Burner



## Hargrove Select

- Available in 9 sizes 18”-66”
- Single Side and See-Thru Sets Available
- Works with E-Burner, H-Burner, HC Burner and System 4 Burner



## Mountain Timber

- Available in 7 sizes 21”-60”
- Single Side and See-Thru Sets Available
- Works with E-Burner, H-Burner, HC Burner and System 4 Burner



## Western Pine

- Available in 8 sizes 15”-48”
- Single Side and See-Thru Sets Available
- Works with E-Burner, H-Burner, HC Burner and System 4 Burner

# Large Series



## Kodiak Char Double Stack

- Available in 5 sizes 24”-60”
- Available in Triple Stack (30”-60”)
- Utilizes Double Stack Burner



## Kodiak Split Double Stack

- Available in 4 sizes 30”-60”
- Available in Triple Stack
- Utilizes Double Stack Burner



## Kodiak Timbers

- Available in 4 sizes 21”-36”
- Single Side Sets available
- Utilizes Double Stack Burner



## Mountain Timber

- Available in 7 sizes 21”-60”
- Works with E-Burner, H-Burner, and System 4 (up to 30”)
- Utilizes Ember Supreme Burner



## Summit Oak

- Available in 3 sizes 36”-48”
- Single Side Sets Available
- Utilizes Summit Oak Burner

# Pinnacle Series

---



## Sierra Stack

- Available in 4 sizes 15"-30"
- Single Side Sets available
- Utilizes Pinnacle Burner system



## Everest Stack

- Available in 3 sizes 18"-30"
- Single Side Sets available
- Utilizes Pinnacle Burner system



## Olympia Stack

- Available in 3 sizes 18"-30"
- Single Side Sets available
- Utilizes Pinnacle Burner system

## Accessory Options

---



Bark Chip Kit



Charred Chip Kit



Combo Kit



Fiber Char Chunk Kit



Twig Kit



Pinecones

## Burner Options

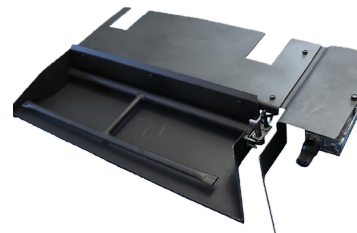
---



H-Burner



E-Burner



HC Burner



System 4 Burner

Available with Manual Safety Pilot, On/Off Remote, Variable Remote, Millivolt, and Electronic Ignition