

*Vent-Free Gas
Hearth Products*



Model 34ZC in Prestige Bookcase Mantel

Buck Stove Vent-Free Fireplace Systems...

Now you can add the warmth, charm and beauty of a fireplace to almost any room in your home. Vent-Free units require no chimney or venting system so there is no heat loss and installation is quick and easy. Buck Stove Vent-Free fireplaces are 99.9% fuel efficient and require no electricity making them the perfect alternative for emergency heat during power outages. Safety is a top priority with every Buck Stove Vent-Free Fireplace. All units are design certified and meet or exceed all regulations and safety program standards. Additionally, these units offer the dual function safety pilot system which protects against oxygen depletion and interruption in fuel supply. Available in Natural or LP Gas.

Model 34ZC



Shown With Brass Accents In Contemporary Mantel With Light Finish
(Also Available In Dark Finish)

The Model 34 ZC is our most popular vent-free Fireplace providing up to 33,000 BTU's of clean heat. Standard features include factory installed variable speed blower and thermostatically controlled gas which modulates to maintain desired heat output. Optional Millivolt gas valve for use with remote control or wall thermostat. Choose from numerous installation options to fit every need. Model 34ZC can be used as a masonry fireplace insert, freestanding with optional mantel or this unit can be built into existing wall for zero clearance application.

Model 34ZC Specifications*

Unit Dimensions	34" W x 23 $\frac{3}{4}$ " H x 16" D
Classic Mantel Dimensions	49 $\frac{1}{2}$ " W x 44" H x 18 $\frac{1}{2}$ " D
Contemporary Mantel Dimensions	52 $\frac{1}{2}$ " W x 43 $\frac{1}{2}$ " H x 21 $\frac{3}{4}$ " D
Prestige Mantel Dimensions	60 $\frac{1}{8}$ " W x 39 $\frac{3}{8}$ " H x 18 $\frac{3}{8}$ " D
<i>Corner Mantel & Framing Dimensions Are Listed On The Back Page</i>	
Minimum Fireplace Dimensions	29 $\frac{1}{2}$ " W x 24" H x 12" D
BTU/H Output	33,000
Blower	Yes
Millivolt & Modulating Control	Both Available (Specify When Ordering)
Manufactured Home Approved	Yes

34 With Black Accents
In Classic Mantel With
Dark Finish



34 With Brass Accents In
Prestige Bookcase Mantel
With Dark Finish



34 Fireplace Insert
With Brass Accents &
Standard Trim Kit



34 Pennyvein Insert
With Brass Accents &
Pennyvein Trim Kit



Available Mantel Colors

Classic & Contemporary Mantel Colors

Deluxe & Standard available in Dark Oak & Unfinished ONLY



*Size, Color, Style and Options on units and mantels are subject to change without notice.

Model 384



Shown As Fireplace Insert With Trim Kit



Shown In Prestige Mantel With Dark Finish



Shown As Freestanding Unit With Black Legs

The Model 384 is the perfect gas fireplace for installation in your home. This fireplace has a new Ember Stove Base design with a glowing ember bed. The firebox area is made complete by Oak Style ceramic logs, and Boston Buff brick panels for the most realistic look available. This fireplace has a 33,000 BTU rating and factory installed blower system with built in thermostat to ensure that only warm air is circulated throughout your home. The gas control system (L.P. or Natural Gas) is a Millivolt style valve which allows you to use an optional remote control or wireless wall thermostat for extra convenience and comfort.

Model 384 Specifications*

Unit Dimensions	32" W x 23½" H x 14¼" D
Classic Mantel Dimensions	49½" W x 44" H x 18½" D
Contemporary Mantel Dimensions	52½" W x 43½" H x 21¾" D
Prestige Mantel Dimensions	60⅞"W x 39⅞"H x 18⅜"D
<i>Corner Mantel & Framing Dimensions Are Listed On The Back Page</i>	
Minimum Fireplace Dimensions	33" W x 25⅞" H x 12½" D
BTU/H Output	33,000
Blower	Yes
Millivolt & Modulating Control	Millivolt Only
Manufactured Home Approved	Yes

New Model 329

The New Model 329 will make a beautiful addition to almost any room while providing amazing warmth to your home. The 329 provides up to 33,000 BTU's and quietly circulates warm air throughout your home with the factory installed variable speed blower system. This unit can be freestanding with optional pedestal (Shown in picture), a fireplace insert with added trim kit, or in one of our beautiful mantels.

New Model 329 Specifications*

Unit Dimensions	29¼" W x 23½" H x 15½" D
Classic Mantel Dimensions	49½" W x 44" H x 18½" D
Contemporary Mantel Dimensions	52½" W x 43½" H x 21¾" D
Prestige Mantel Dimensions	60⅞"W x 39⅞"H x 18⅜"D
<i>Corner Mantel Dimensions Are Listed On The Back Page</i>	
Minimum Fireplace Dimensions	29½" W x 24" H x 6" D
BTU/H Output	33,000
Blower	Yes
Millivolt & Modulating Control	Both Available (Specify When Ordering)
Manufactured Home Approved	Yes



Shown As Freestanding With Pedestal

*Size, Color, Style and Options on units and mantels are subject to change without notice.

Models 1110 & 1127



1127 shown above in optional Prestige bookcase mantel.

These units prove that good things come in small packages. For just pennies per hour you can enjoy up to 10,000 BTU's (Model 1110) or up to 25,000 BTU's (Model 1127) of heat circulating throughout your home by the factory installed variable speed blower system. The model 1110 is approved for bedroom use (check local codes) and is identical in size and shape to the model 1127. Both models share the same great options and both models are wall mountable.

Models 1110 & 1127 Specifications*	
Unit Dimensions	20 $\frac{1}{4}$ " W x 22" H x 7" D
Prestige Mantel Dimensions	50 $\frac{1}{2}$ " W x 36" H x 14" D
BTU/H Output	10,000 (Model 1110) 25,000 (Model 1127)
Millivolt & Modulating Control	Modulating Only
Available Options:	Deluxe Oak or White Mantel
<small>(Corner Mantel Dimensions Listed On Back Page)</small>	Corner Oak Mantel
	Prestige Bookcase Mantel
	Pedestal & Wall Mountable
Manufactured Home Approved	Yes

The Model 32 provides the beautiful appearance of a real fireplace with none of the hassle. Standard features include factory installed variable speed blower system. The Model 32 can be used as a fireplace insert with optional trim kit (shown), freestanding or with optional flat wall or corner mantel.

Model 32 Specifications*	
Unit Dimensions	21 $\frac{1}{4}$ W x 25 H x 13 $\frac{1}{2}$ " D
Mantel w/Hearth Dimensions	37 $\frac{1}{2}$ " W x 38 $\frac{1}{2}$ " H x 16" D
Corner Mantel w/Hearth	37 $\frac{1}{2}$ " W x 38 $\frac{1}{2}$ " H x 30 $\frac{3}{4}$ " D
Minimum Fireplace Dimensions	21 $\frac{1}{2}$ " W x 25 $\frac{1}{2}$ " H x 13" D
BTU/H Output	33,000
Blower	Yes
Millivolt & Modulating Control	Modulating Only
Manufactured Home Approved	Yes

Model 32



Shown with Flush Mount Mantel



Shown with Optional Log Set (ZCBBXL)



Shown with Deluxe Mantel

Model ZCBB

Our Model ZCBB is available as a 36" or 42" zero clearance universal firebox. Install it almost anywhere since no chimney or hearth is required. Customize for the look you want with tile, rock or marble and add a raised hearth if you desire. The ZCBB offers an efficient heat circulating design which keeps warm air flowing. This fireplace is perfectly completed by adding a set of Buck Stove Vent-Free Ember Vision Gas Logs.

Model ZCBB Specifications*	
36" ZCBB Unit Dimensions	39 $\frac{5}{16}$ " W x 35 $\frac{1}{2}$ " H x 19 $\frac{1}{2}$ " D
36" Unit Mantel Dimensions	51 $\frac{1}{2}$ " W x 51" H x 24 $\frac{1}{2}$ " D
36" Flush Mantel Dimensions	60" W x 49 $\frac{1}{2}$ " H x 6 $\frac{1}{2}$ " D
42" ZCBB Unit Dimensions	45 $\frac{5}{16}$ " W x 35 $\frac{1}{2}$ " H x 19 $\frac{1}{2}$ " D
42" Unit Mantel Dimensions	56 $\frac{1}{2}$ " W x 51" H x 24 $\frac{1}{4}$ " D

ZCBBXL Ember Vision 100 & 200 Logs are 40,000 BTU, millivolt only units. Corner Mantel & Framing Dimensions Are Listed On The Back Page.

Zero Clearance Fireplace Series...

Perfect for your new construction or remodeling project. All units are equipped with factory installed variable speed blower systems and thermostatically controlled gas valves which modulate to maintain desired heat output.

Model 36ZC



Shown In Optional Finished Mantel

Model 36ZC Specifications*
 BTU/H: 33,000
 Unit: 37½" W x 35½" H x 18¾" D
 Mantel: 51½" W x 51¾" H x 26¾" D
 Other Specs & Dimensions Listed On Back Page
 Model 36ZC and 42ZC (not pictured) are similar in style. Refer to back page for specifications.

Model BR10ZC



Shown In Optional Finished Mantel

Model BR10ZC Specifications*
 BTU/H: 10,000
 Unit: 25¾" W x 23¾" H x 13" D
 Mantel: 37½" W x 36" H x 15½" D
 Other Specs & Dimensions Listed On Back Page
 Model BR10ZC is approved for bedroom use. Check your local building codes for guidelines.

Model DV1000 ZC

Direct Vent Gas Unit



Shown In Optional Finished Flush Mantel

Model DV1000ZC Specifications*
 BTU/H: 25,000
 Unit: 38½" W x 33½" H x 16½" D
 Mantel: 58¾" W x 46¾" H x 6" D
 Other Specs & Dimensions Listed On Back Page
 Requires outside air for combustion, DV1000ZC approved for bedroom installation. Check local codes.

Steel Series - Townsend II Steel and Hepplewhite Steel

Townsend II Steel



Green

Hepplewhite Steel



Terracotta



The Buck Stove Vent-Free Steel Series units are precision designed and assembled in the USA. These beautiful stoves are made from high-quality steel which absorbs heat from the fire and radiates warmth even at the lowest setting. The included gas logset provides up to 32,000 BTU's and is 99.9% fuel efficient to save on home heating costs. Standard features include a remote ready millivolt gas valve and a top grill inlay. 1200 degree, powder coated finish available in : Green, Terracotta, Almond, Vintage Copper and Black. Available in LP or Natural Gas.

A blower (with shield) is available as an option for the Townsend II Steel (not available for Hepplewhite).

Unit Dimensions:	Townsend II - 26½"W x 26¼"H x 16½"D
	Hepplewhite - 20½"W x 22¾"H x 14½"D



Terracotta



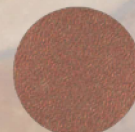
Green



Almond



Black



Vintage Copper

*Size, Color, Style and Options on units and mantels are subject to change without notice.

Stove Dimensions

Model	BTU/H Output	Unit Dimensions			Minimum Fireplace Dimensions			Framing Dimensions			Standard Trim Kit Dimensions		Oversized Trim Kit Dimensions		
		Width	Height	Depth	Width	Height	Depth	Width	Height	Depth	Top	Sides	Top	Sides	
34ZC	33,000	34"	23¾"	16"	29½"	24"	12"	33"	25⅝"	12½"	47⅜" x 6⅜"	30⅞" x 6⅜"	50" x 12⅞"	36⅞" x 7⅜"	
											Fits Fireplaces Up To: 44⅜"W x 27⅞"H		Fits Fireplaces Up To: 47"W x 33⅞"H		
384	33,000	32"	23½"	14¼"	33"	25⅝"	12½"	33"	25⅝"	12½"	45⅝" x 6⅜"	30⅞" x 6⅜"	47⅞" x 12⅜"	36⅞" x 7⅞"	
		With Standard Legs 32" 31¼" 14¼"									Fits Fireplaces Up To: 42⅝"W x 27⅞"H		Fits Fireplaces Up To: 44⅞"W x 33⅞"H		
329	33,000	29¼"	23½"	15½"	29½"	24"	6"			N/A	43" x 6⅜"	30⅞" x 6⅜"	50" x 12⅞"	36⅞" x 10⅞"	
		With Pedestal 29¼" 33¾" 15½"										Fits Fireplaces Up To: 40"W x 27⅞"H		Fits Fireplaces Up To: 47"W x 33⅞"H	
1127 & 1110	25,000	20⅝"	22"	7"						N/A					
	10,000	With Pedestal 20⅝" 29" 7"													
32	33,000	21¼"	25"	13½"	21½"	25½"	13"			N/A	39¼" x 9"	34⅞" x 9"	45¼" x 12"	37⅞" x 12"	
		With Pedestal 21¼" 29" 13½"										Fits Fireplaces Up To: 36¼"W x 31⅞"H		Fits Fireplaces Up To: 42¼"W x 34⅞"H	
ZCBB 36*	N/A	39⅞"	35½"	19½"				40⅞"	38⅞"	20¼"					
ZCBB 42*	N/A	45⅞"	35½"	19½"				46⅞"	38½"	20½"					
36ZC**	33,000	37⅞"	35½"	18⅝"				37⅞"	36⅝"	21½"					
42ZC**	33,000	45½"	35½"	18⅝"				45⅝"	36⅝"	19"					
BR10ZC	10,000	25⅝"	23⅝"	13"				26⅞"	25⅝"	13½"					
DV1000	25,000	38⅞"	33½"	16½"				37⅞"	36⅞"	17"					
TOWN II	32,000	26½"	26¼"	16½"											
HEPP	32,000	20½"	22¾"	14½"											

Mantel Dimensions

Model	Style	A	B	C	D	E	F
34ZC, 384 & 329	Classic	49½"	18½"	44"	49½"	34⅞"	39"
	Contemporary	52½"	21¾"	43½"	52½"	37⅞"	44½"
	Prestige	60⅞"	18⅝"	39⅝"	N/A	N/A	N/A
1127 & 1110	Deluxe	37"	14"	34"	37"	26"	37"
	White Deluxe	37"	14"	34"	N/A	N/A	N/A
	Prestige	50½"	14"	36"	N/A	N/A	N/A
32	Standard	37½"	16"	38½"	37½"	25⅝"	30¾"
ZCBB 36*	Deluxe	51½"	24½"	51"	49½"	35¼"	46⅞"
	Flush Mount	60" Top	6½" Top	49½"	N/A	N/A	N/A
ZCBB 42*	Deluxe	56½"	24¼"	51"	58"	40 ²¹ / ₃₂ "	48¾"
36ZC**	Standard	51½"	26¾"	51⅝"	51½"	34⅞"	50"
42ZC**	Standard	60"	24¼"	51½"	60"	41¼"	51¾"
BR10ZC	Deluxe	37½"	15½"	36"	37½"	25"	38¾"
DV1000	Flush Mount	58⅝"	6"	46⅞"	N/A	N/A	N/A

* ZCBBXL Packages include Ember Vision log sets with 40,000 BTU/H output, millivolt control, thermostat and remote. ZCBBXL packages have the same Unit, Framing and Mantel Dimensions as the ZCBB units.

** 36ZC & 42ZC units will not fit ZCBB Mantels and vice-versa. Please specify the correct mantel for your units when ordering.



New Buck Corporation

P.O. Box 69

Spruce Pine, NC 28777

Phone: (828) 765-6144

Fax: (828) 765-0462

Email: info@buckstovecorp.com

Website: www.buckstove.com

