

# SYMMETRY XT BESPOKE

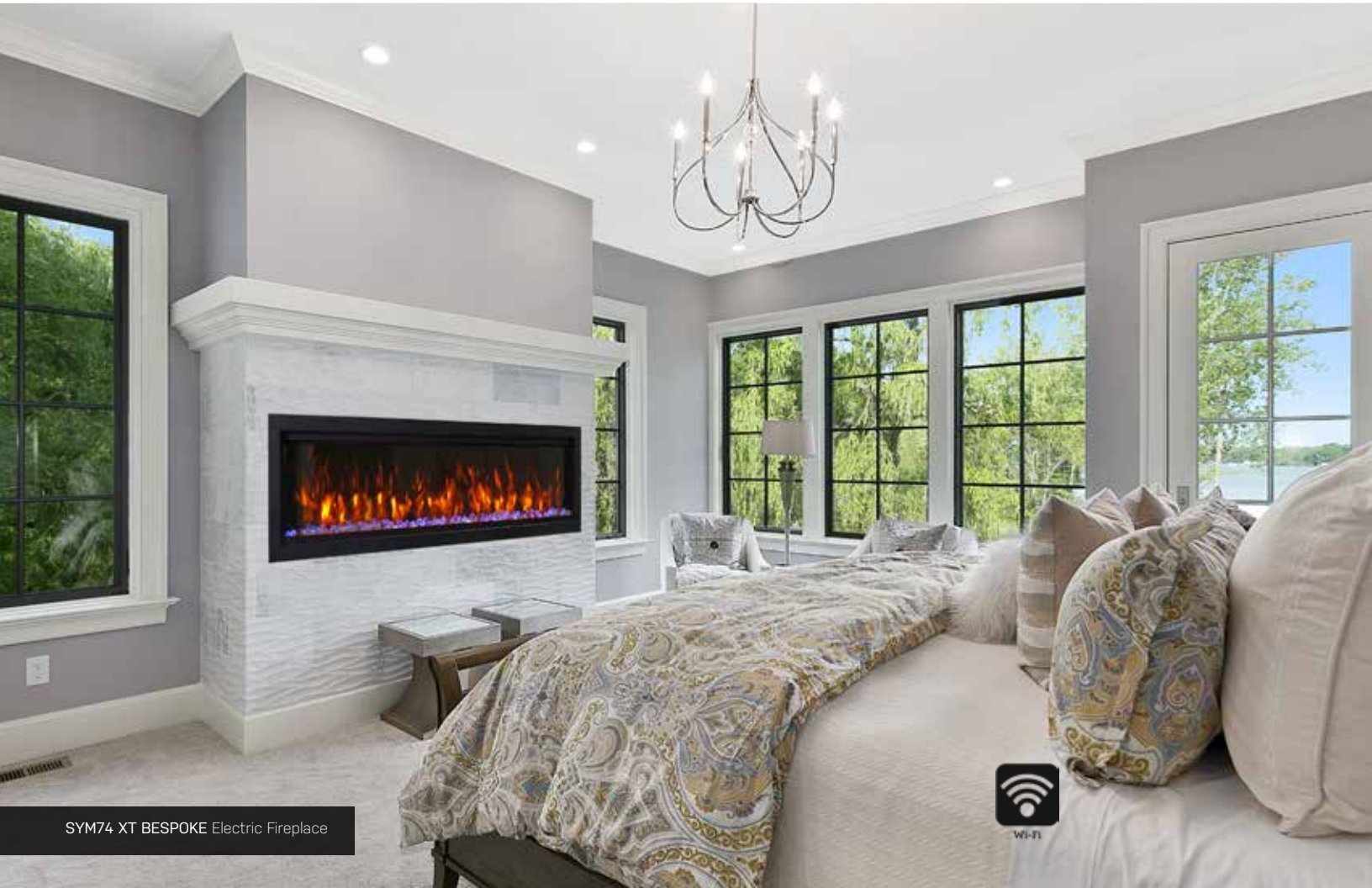
ELECTRIC FIREPLACES



SYM-50 XT BESPOKE Electric Fireplace



SYM-60 XT BESPOKE Electric Fireplace




SYM74 XT BESPOKE Electric Fireplace



# SYMMETRY XT BESPOKE | ELECTRIC FIREPLACES

The Symmetry Xtra Tall Bespoke is grandly proportioned to fit in great rooms and commercial settings. It's the size and height of this electric fireplace that started it all, revolutionizing the electric fireplace industry. Delivering tall, full flames, it commands presence in any room and can be customized to your taste – from contemporary to traditional, the media log set selection is yours.

Unencumbered by unsightly venting, the Symmetry Xtra Tall Bespoke features a truly clean face display. Standard unit sizing means hassle free installation at any stage, inside or outside. Symmetry Xtra Tall Bespoke is the perfect blend of versatility, style and function.

- 5 Year Warranty
- Fire & Sound – Two (2) quality audio speakers deliver a fire crackling sound. The audio is an ON/OFF feature that can be controlled through the WiFi app.
- WiFi compatible to connect and control the fireplace from your smartphone with the use of our app. Available on the Google play store and the Apple App Store.
- Bluetooth Connectivity – Featuring a fireplace with high quality audio from Bluetooth speakers. Simply pair your phone with the fireplace and press play on your smartphone. 
- Programmable timer & thermostat allows you to decide the temperature of the room. Set the fireplace to turn on before you arrive home or have it automatically turn on when the weather is cold.
- Smart Room Temperature Control - 59°F - 82°F or 15°C - 28°C
- 1500W 5120 BTU, heats up to 400 Sq. Ft. May also be wired to 220 volts to increase the BTU output to 10,240, heats up to 900 Sq. Ft.
- 50000 hours lifetime LED light source
- Approved for Outdoor Installations
- Designed with front flow heating and hidden venting so that the unit can be recessed or semi flush mounted.
- A clear reduced trim kit allows for a large viewing area with true lifelike flames that can not be rivaled.
- Adjustable flame brightness and speed that can be turned on separately.
- Adjustable ember bed colors that allow for the possibility of auto mixing thousands of colors
- Most quiet and reliable components in the industry
- Patented thermostatic remote comes included
- Masonary finish to trim option

## IDEAL APPLICATIONS

- Residential spaces
- Commercial spaces
- Restaurants
- New construction or renovations
- Outdoor use; refer to installation manual

## TECHNICAL SPECS

Volts	120
Amps	12.5
Watts	1500 max
Heater On	1500 Watts high, 750 Watts low
Heater Off	42.7 Watts – SYM 50 XT Bespoke 45.2 Watts – SYM 60 XT Bespoke 60.4 Watts – SYM 74 XT Bespoke
Rotor Motor	1 at 2.9 Watts
BTU	5120 BTU on 120 Volts 10,240 BTU on 220 Volts

Heats up to 400 Sq Feet on 120 Volts  
Heats up to 800 Sq Feet on 220 Volts

Hidden venting and no grills. The heater is located at the top of the unit allowing heat to cascade down in front of the glass.

*Amantii*



### SYM-50 XT BESPOKE

Height, Width, Depth: 20-1/8 x 50-1/4 x 11-3/4  
Glass Viewing Opening: 17-5/8 x 48-3/8  
Surround Size: 21-3/8 x 52-1/4  
Shipping Weight: 110.14 lbs Glass Included  
Media Shown: Rustic Log Kit

### SYM-60 XT BESPOKE

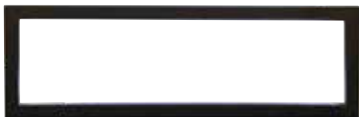
Height, Width, Depth: 20-1/8 x 60-1/4 x 11-3/4  
Glass Viewing Opening: 17-5/8 x 58-3/8  
Surround Size: 21-3/8 x 62-1/4  
Shipping Weight: 129.32 lbs Glass Included  
Media Shown: Birch Log Kit

### SYM-74 XT BESPOKE

Height, Width, Depth: 20-1/8 x 74-1/4 x 11-3/4  
Glass Viewing Opening: 17-5/8 x 72-3/8  
Surround Size: 21-3/8 x 76-1/4  
Shipping Weight: 159.09 lbs Glass Included  
Media Shown: Drift Wood Kit

## INCLUDED ACCESSORIES

Models come with a choice of a Design Media kit - Driftwood, Birch or Rustic or ICE media kit



YOUR CHOICE:

### DESIGN-MEDIA-DRIFT-15PCE

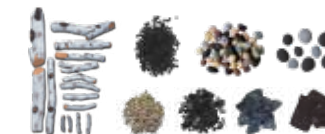
Now includes an additional 4 mini logs (Not Shown)



### DESIGN-MEDIA-RUSTIC-14PCE



### DESIGN-MEDIA-BIRCH-15PCE



### ICE MEDIA



FI-109-Diamond

