

CLASSIC SLIM – Repair Guide



Remui 

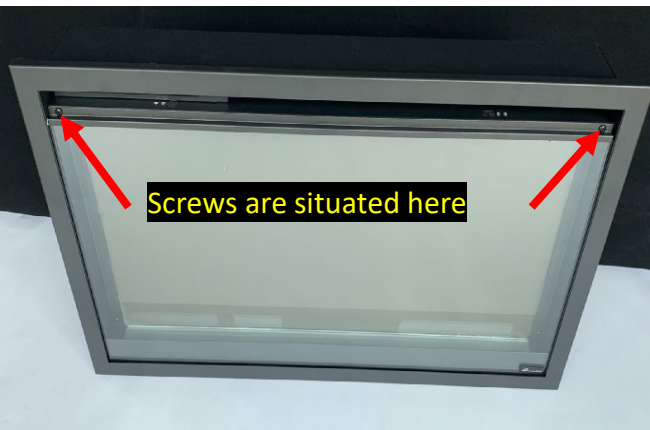
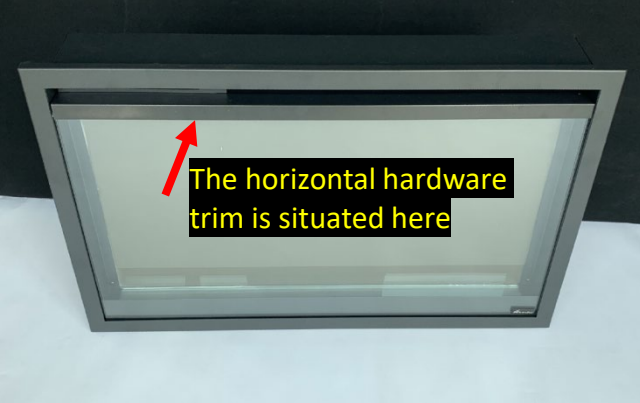
Content

- [Replacing the LED light\(flame and tray light\)](#)
- [Replacing the flicker motor](#)
- [Replacing the circuit board](#)
- [Replacing the heating element](#)
- [Replacing the touch panel](#)
- [Replacing the signal receiver and WiFi card](#)

Replacing the LED light

FLAME LIGHT

STEP 1 Remove the magnetic stone to remove the horizontal hardware trim



Remove the horizontal hardware trim .

Screws are visible after the trim has been removed



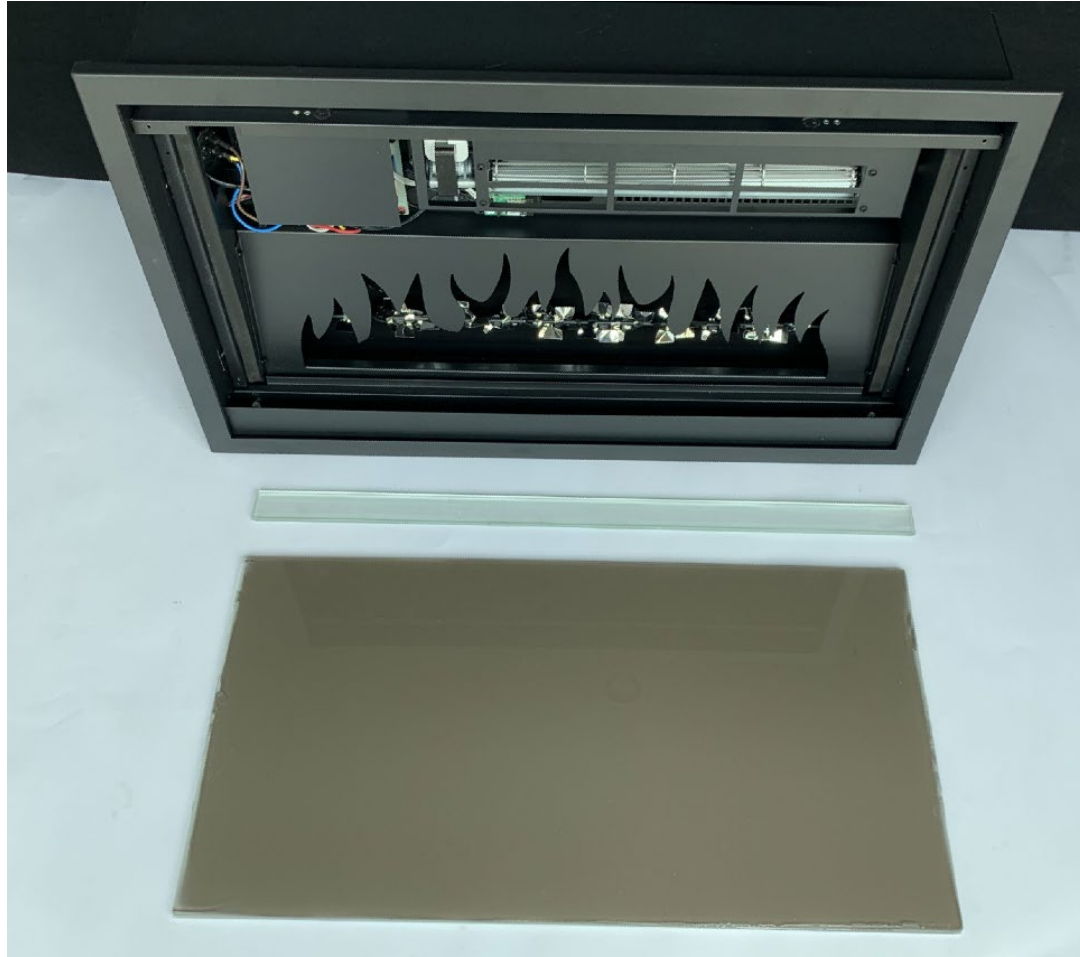
STEP 2

Remove the two (2) screws to remove the front glass steel bar and the front glass panel





STEP 3 Remove the four (4) screws to remove the back glass fixing steel bars and remove the back and tray glass



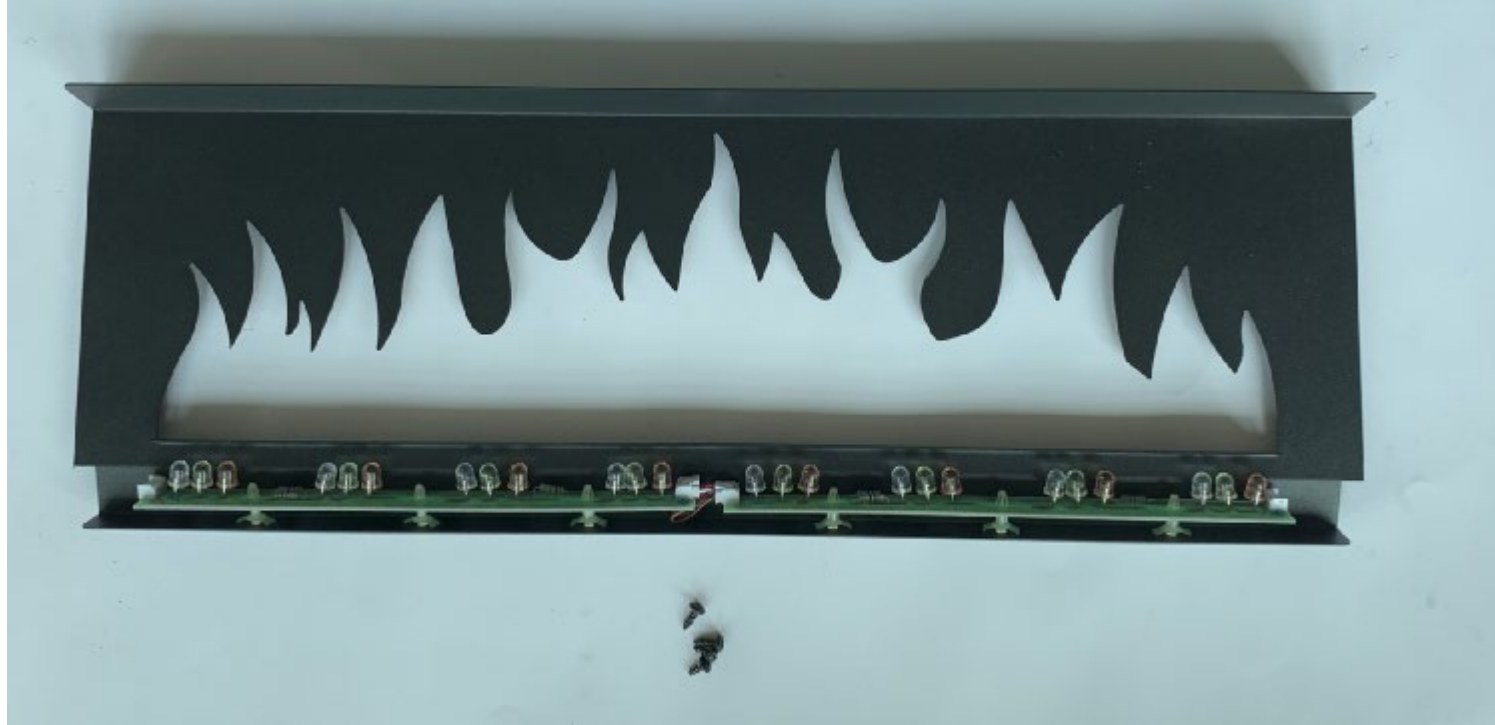
It should now look like this once the back and tray glass are removed.

STEP 4 Remove the four (4) screws to disconnect the flame stencil from the fireplace.



STEP 5 Unplug the LED strip from the fireplace to remove the flame stencil and flame LED light assembly from the fireplace.





You can replace the flame display LED strip.

STEP 6

Replacing the tray light

Please follow steps 1 through 5 from replacing the flame light.

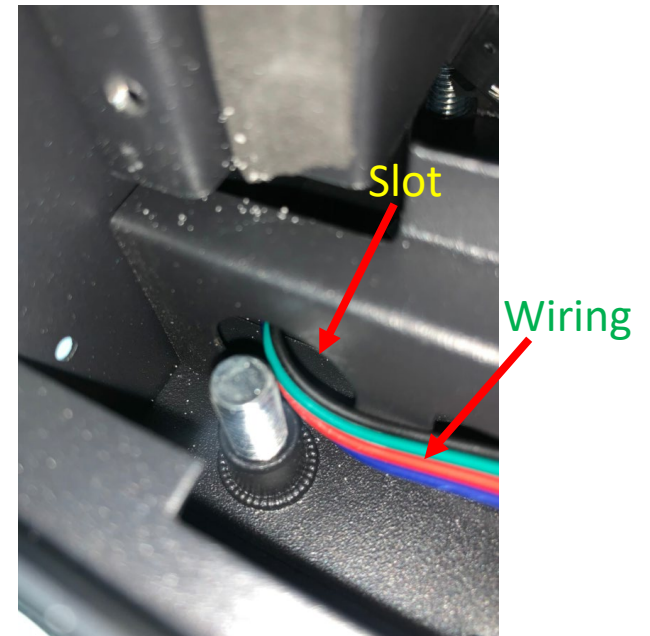
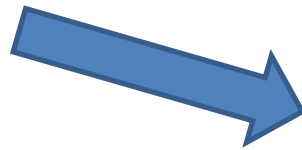
Remove two (2) screws to disconnect the tray light assembly from the fireplace.



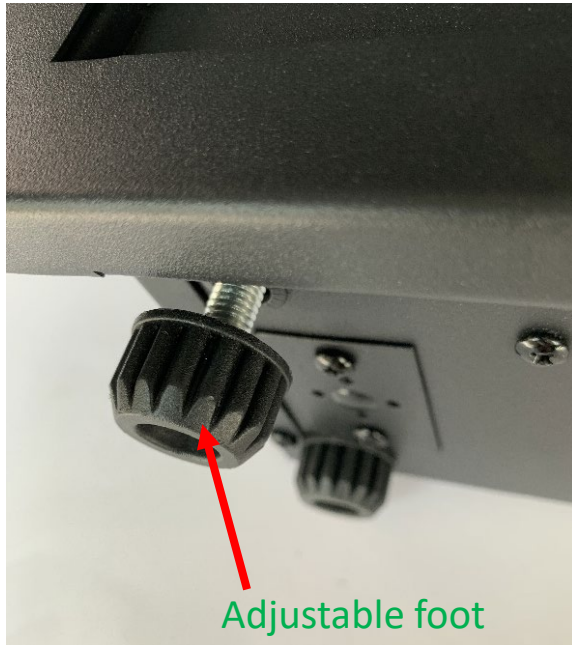


STEP 7

Unplug the tray light from the fireplace and detach the wiring from the slot to take off the tray light assembly.



STEP 8

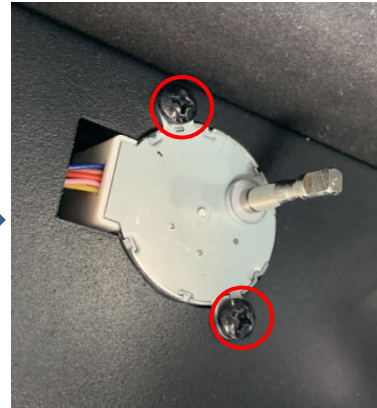
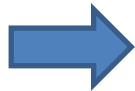


If you cannot remove the wiring out from the slot, loosen the adjustable foot slightly to remove the wiring out from the slot and take the tray light assembly off.

Replacing the flicker motor for the flame

Please follow steps 1 through 5 from replacing the flame light.

STEP 9

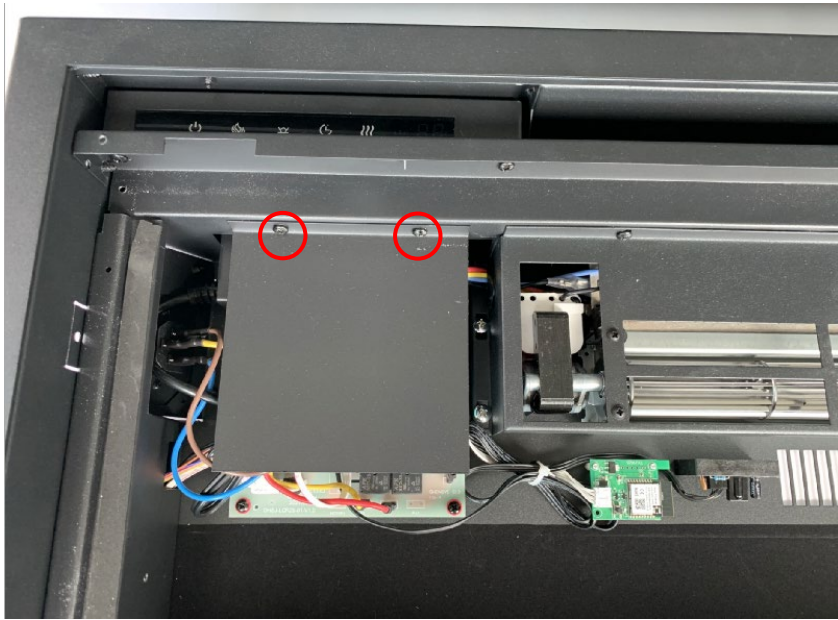


Unscrew the screw

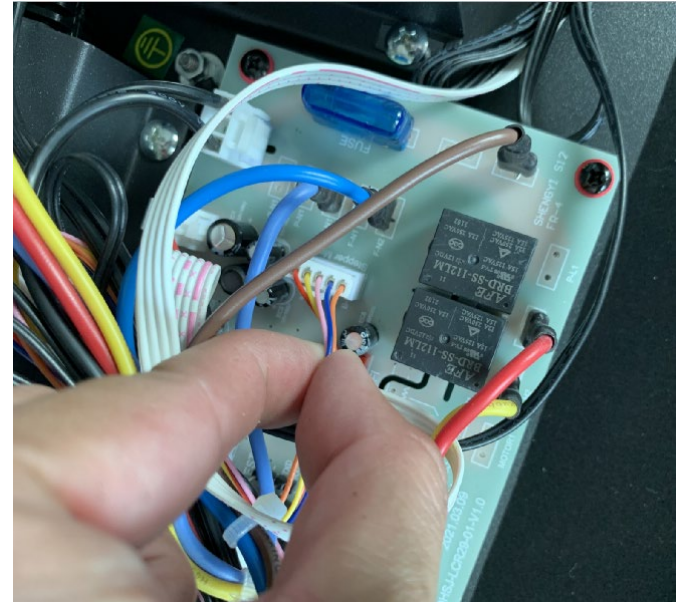
Disconnect the flick
rod from the motor

Remove two (2)
screws to disconnect
the motor from the
fireplace

STEP 10



Remove the two (2) screws to take off the circuit board protective panel

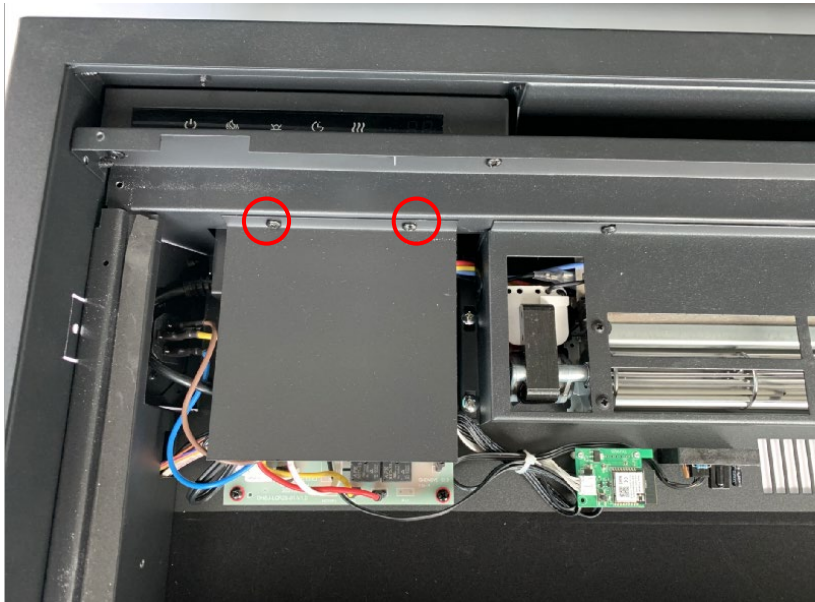


Unplug and replace a new motor

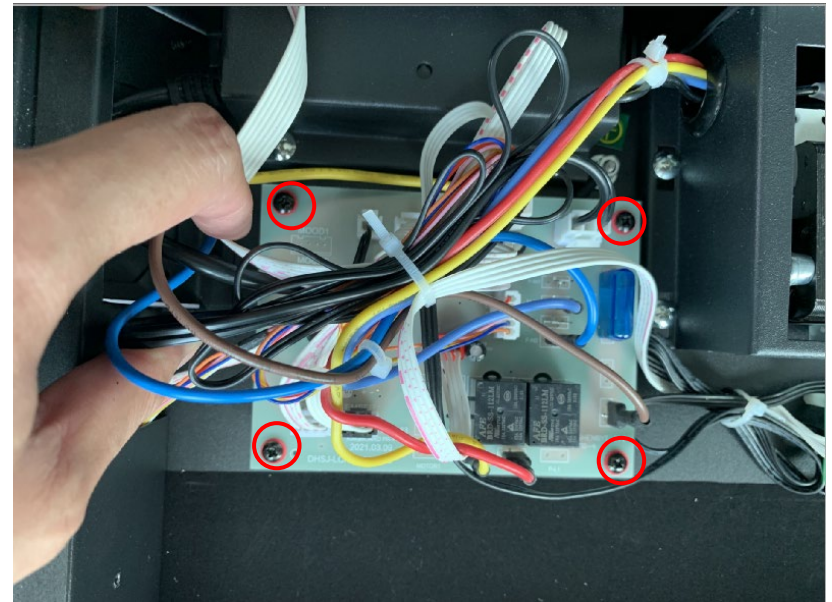
Replacing the Circuit Board

Please follow steps 1 thru 3 in replacing the flame light.

STEP 11



Remove the two (2) screws to take off the circuit board protective panel



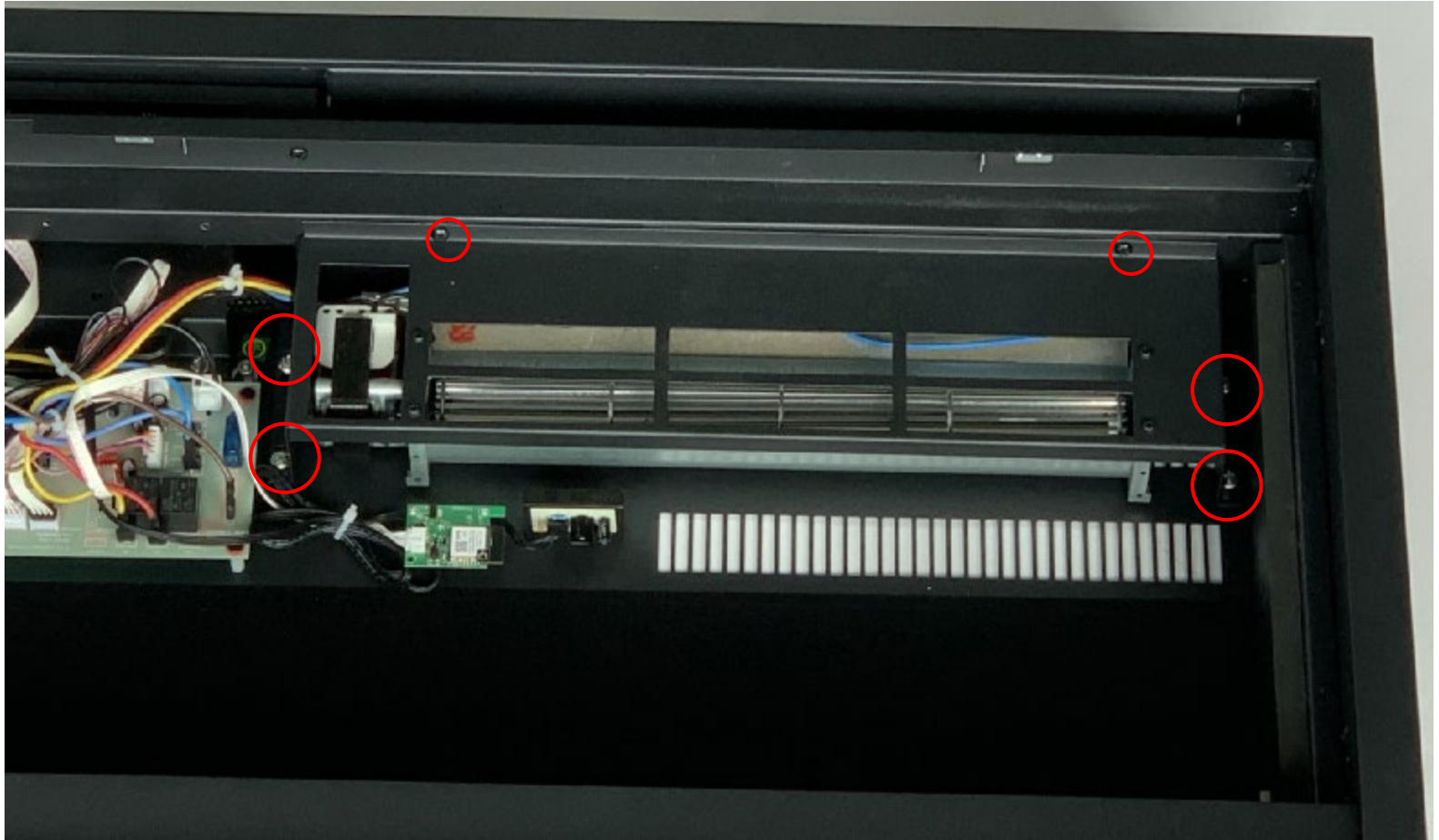
Remove the four (4) screws and unplug to insert a new circuit board

Replacing the Heating Element

Please follow steps 1 through 3 from replacing the flame light.

STEP 12

Unscrew the four (4) large silver colored screws and two (2) black screws to disconnect the heat assembly from the fireplace.



STEP 13



Remove four(4) screws and unplug to replace a new heater.

Replacing the Touch Panel

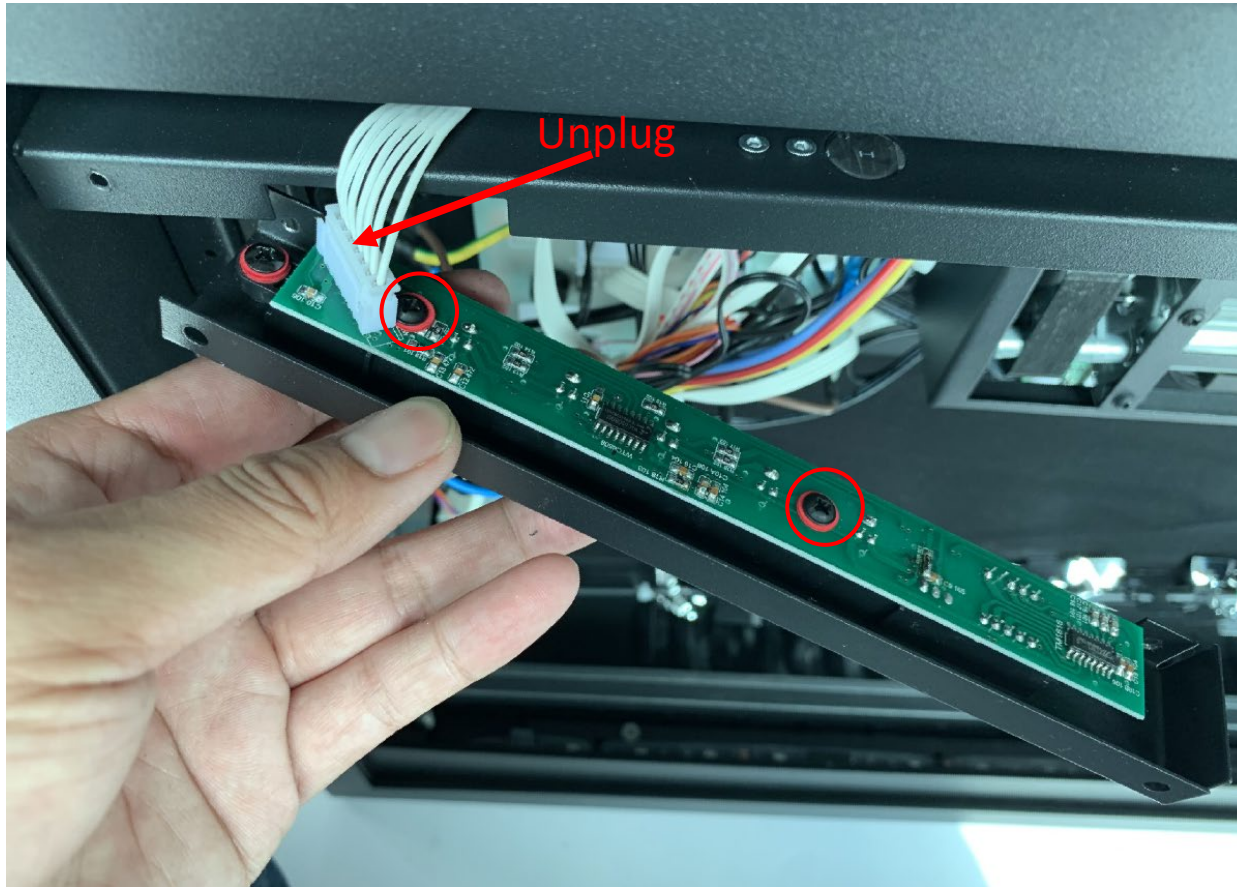
Please follow steps 1 to 3 in replacing the flame light.

STEP 14

Unscrew two (2) screws to disconnect the touch panel assembly from the fireplace.



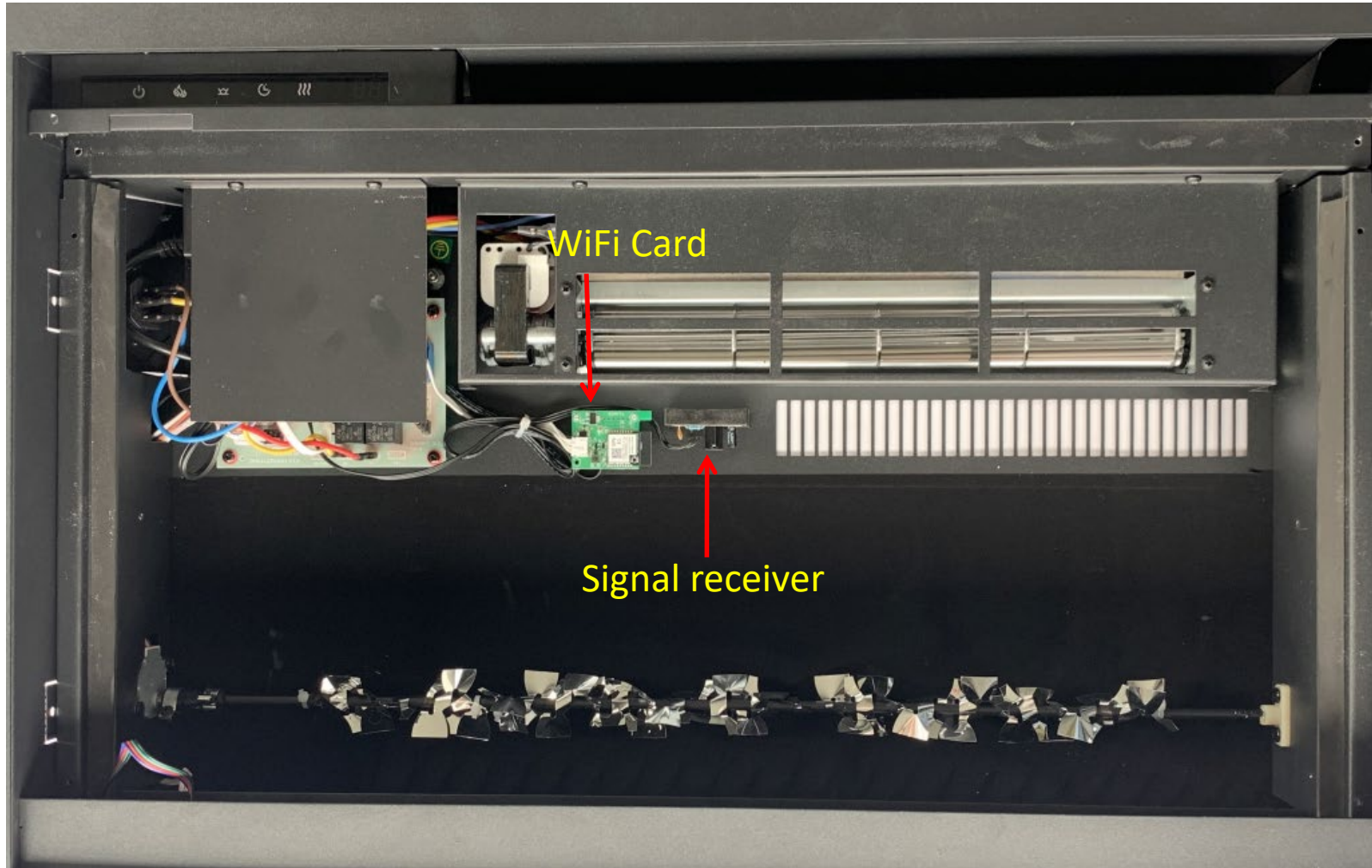
STEP 15



Remove two (2) screws and unplug to replace a new touch panel

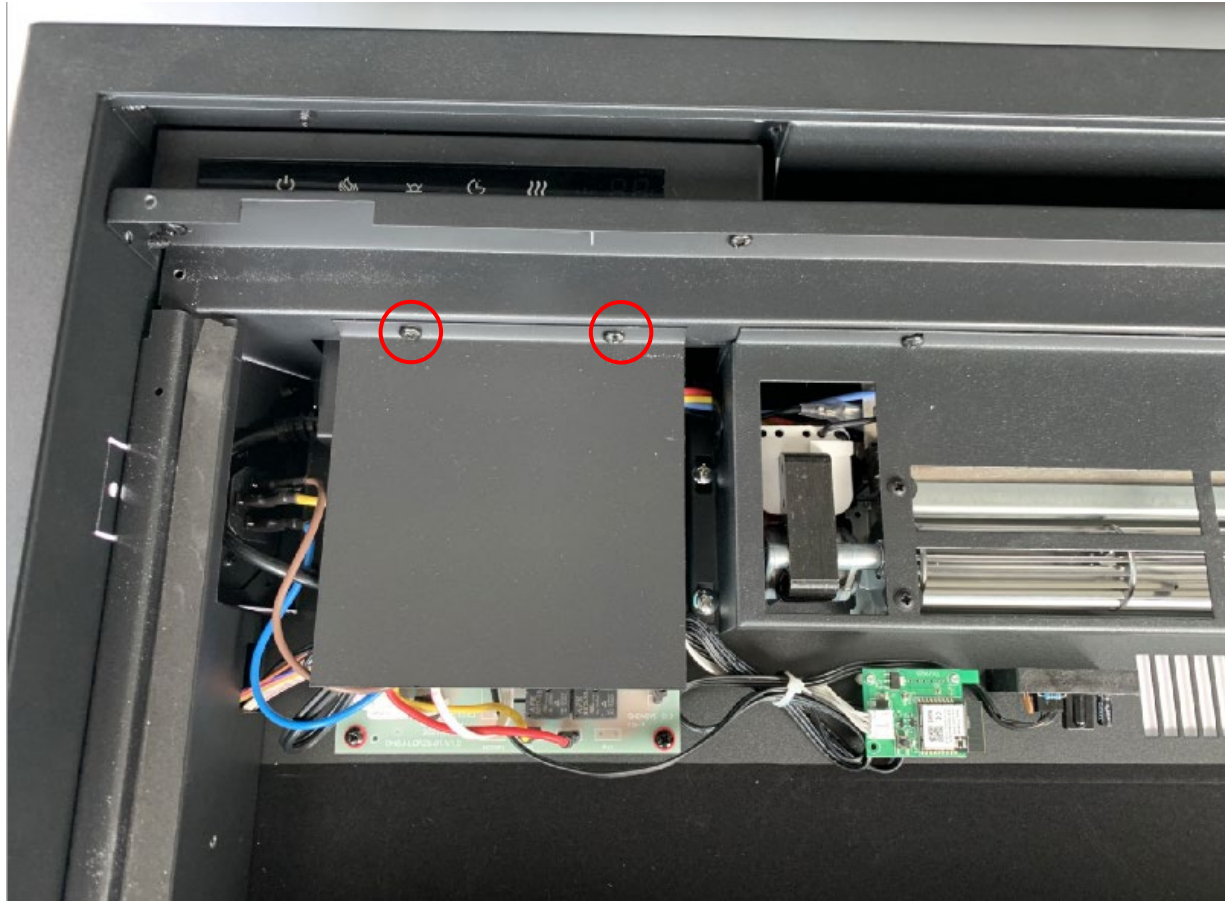
Replacing the Signal Receiver and WiFi Card

Please follow steps 1 through 5 in replacing the flame light.



STEP 16

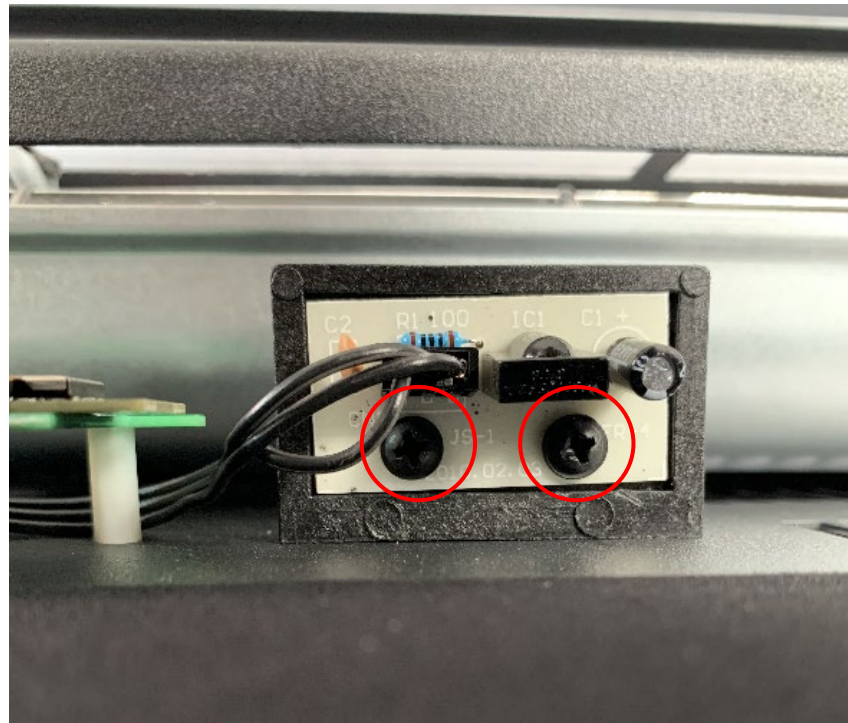
Remove the two (2) screws to take off the circuit board protective panel



Replacing the Signal Receiver

STEP 17

Remove the two (2) screws to take off signal receiver and unplug it from the circuit board to replace it with a new one.



Replacing the WiFi Card

STEP 18

Remove the two (2) screws to take off the WiFi card and unplug it from the circuit board to replace it with a new one.

