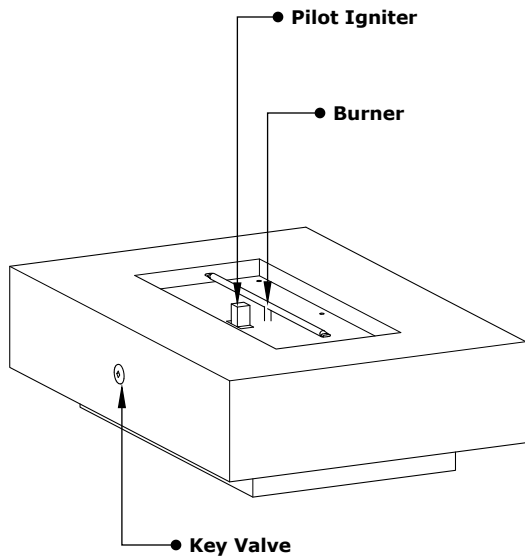
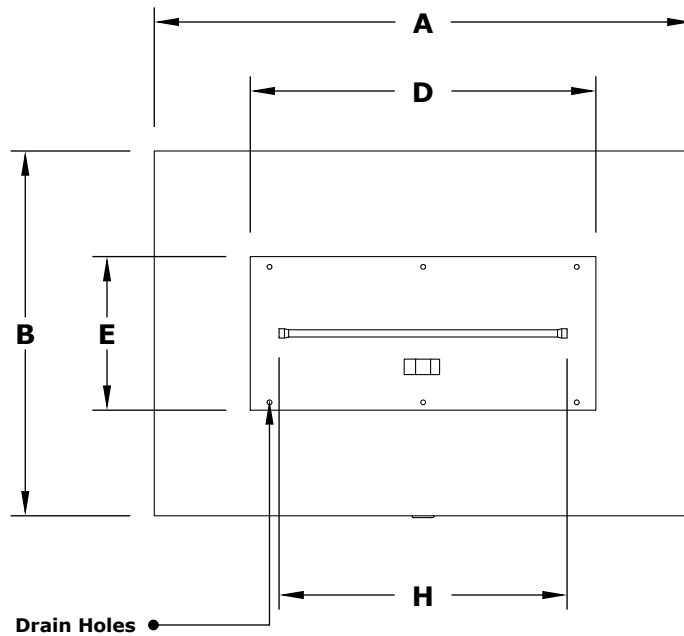


LINEAR CABO FIRE PIT

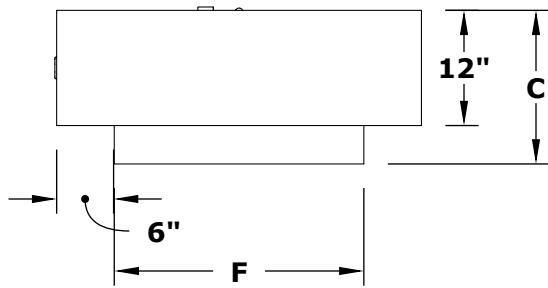
Hammered Copper, Corten Steel, Stainless Steel, Powder Coated Steel



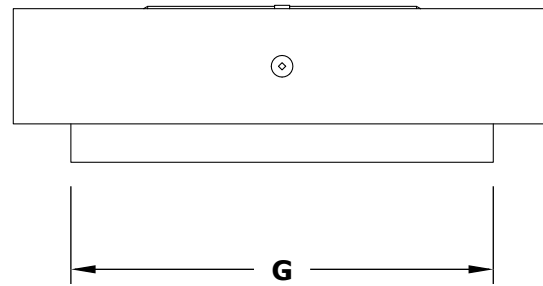
ISOMETRIC VIEW



TOP VIEW



RIGHT SIDE VIEW



FRONT SIDE VIEW

Hammered Copper	Corten Steel	Stainless Steel	Powder Coated	A	B	C	D	E	F	G	H	BTU
OPT-CBLN56CPR	OPT-CBLN56CS	OPT-CBLN56SS	OPT-CBLN56PC	56"	38"	16"	36"	16"	26"	44"	24"	65,000
OPT-CBLN66CPR	OPT-CBLN66CS	OPT-CBLN66SS	OPT-CBLN66PC	66"	38"	16"	36"	16"	26"	54"	24"	65,000
OPT-CBLN90CPR	OPT-CBLN90CS	OPT-CBLN90SS	OPT-CBLN90PC	90"	38"	16"	66"	16"	26"	78"	54"	65,000

Fire Pit Material: Various Metals
 Pan Material: 304 Stainless Steel
 Burner Material: 304 Stainless Steel

Standard 2" Depth on all pans

Match Lit Unit Includes: Pan, Burner, Gas Orifice, Gas Hoses, Key Valve, Key,
 110v Ignition Unit Includes: Pan, Burner, Gas Orifice, Gas Hoses, Key Valve, Key, Plug & Play Electronic Valve, Pilot Igniter.

110V ELECTRONIC IGNITION
 ANSI Z21.97-(2017) / CSA 2.41-(2017)

