

SQUARE GLASS TUBE BURNER

**If your unit is not receiving a pilot or has a yellow flame,
you may have debris inside your venturi tube.**

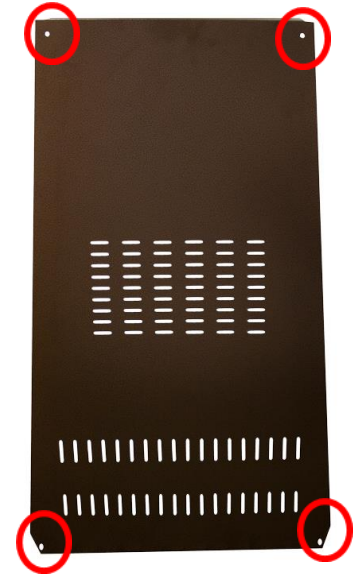
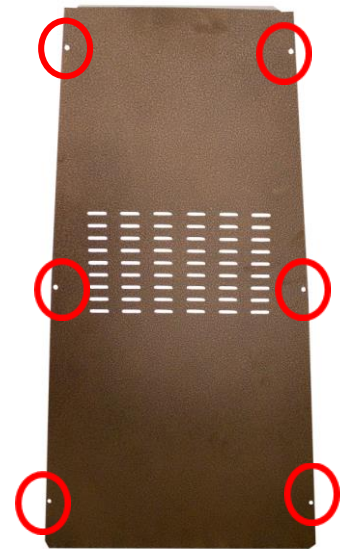
**The following are instructions to clean out the pilot
feed tube from your glass tube heater.**

Step 1

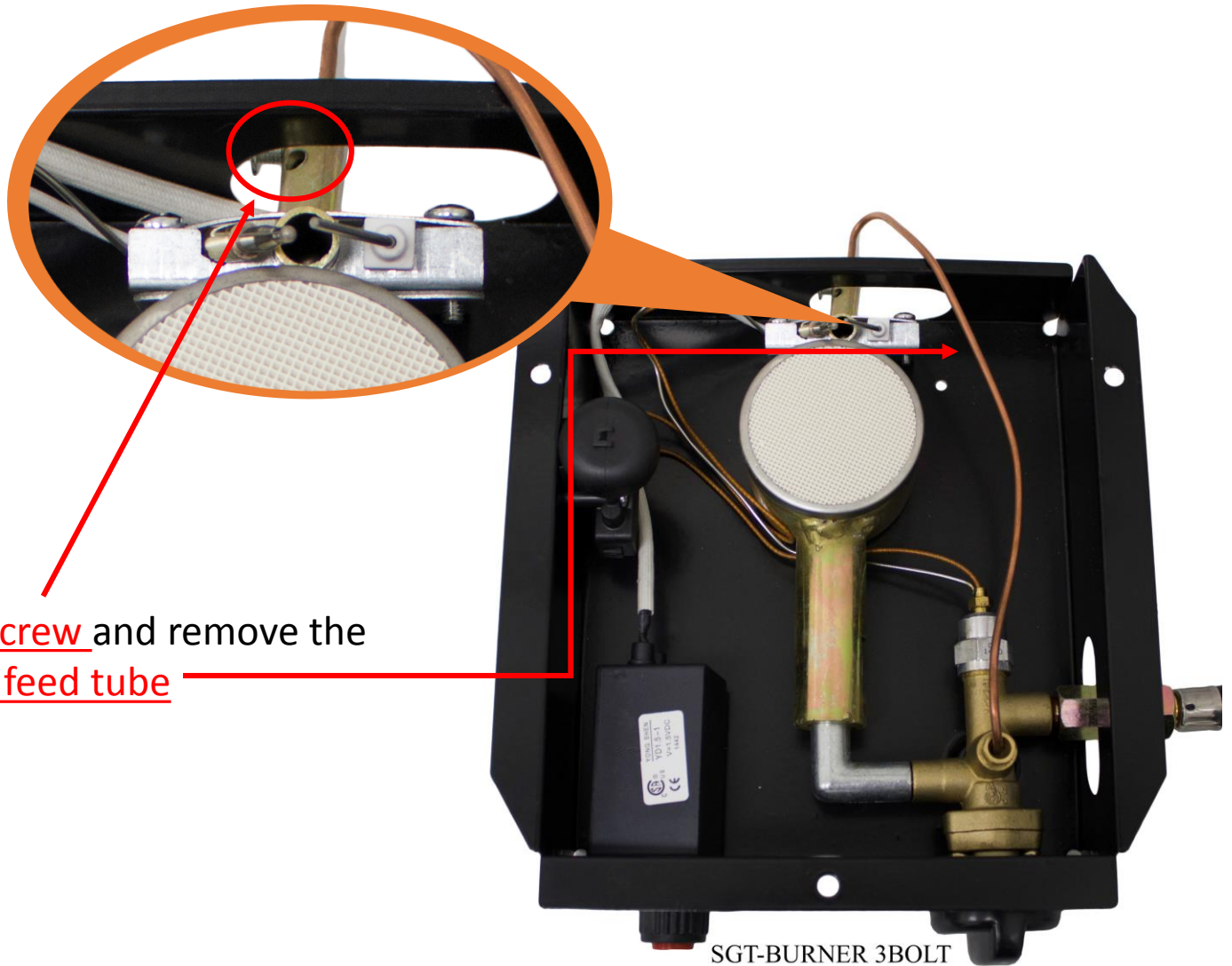
Remove the rear panel from your unit.

-or-

If you have a Triangle unit, remove the panel that is closest to the pilot.



Step 2

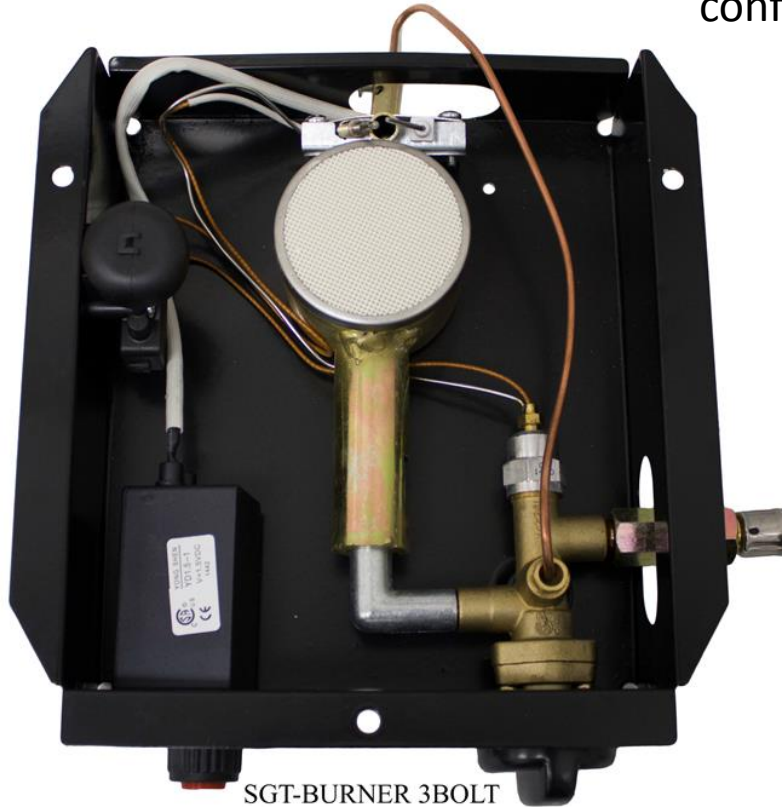


Loosen the set screw and remove the pilot feed tube

SGT-BURNER 3BOLT

Step 3

Check the tip of the pilot tube by placing some soapy water on the end and turning your gas on, you should see bubbles. This confirms the unit is receiving propane.



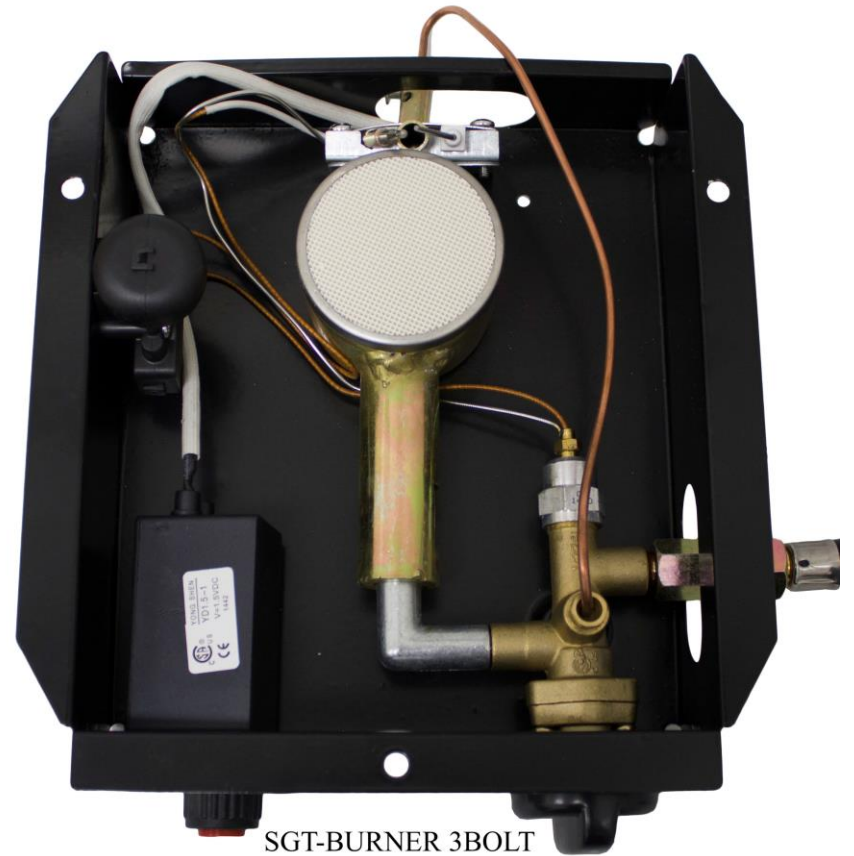
NOTE

You may unscrew the tip if your not getting any bubbles. If dirty, let soak in hot water for 30 min.

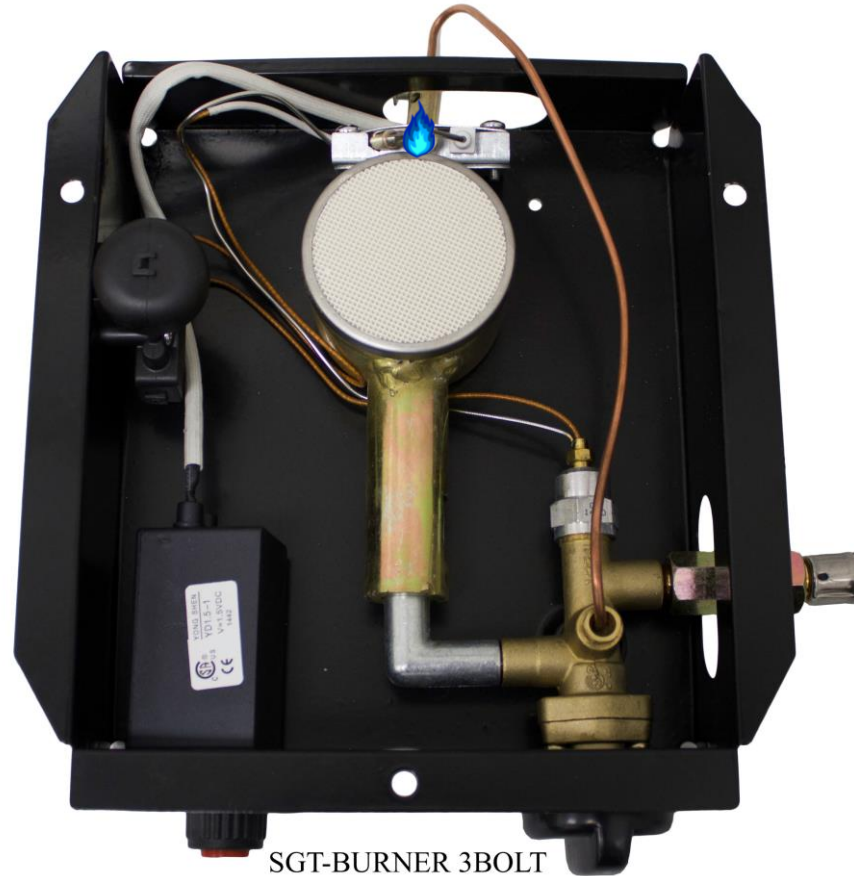
Step 4



Use compressed air and a zip tie to clean out any debris from the venturi tube.



You should receive a nice blue flame, about ¼" high.



SGT-BURNER 3BOLT