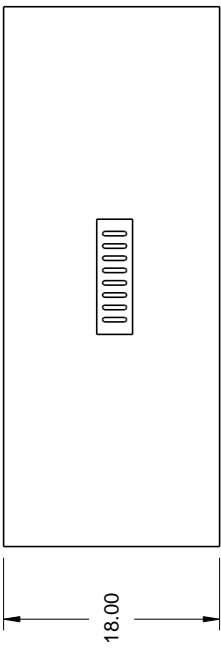
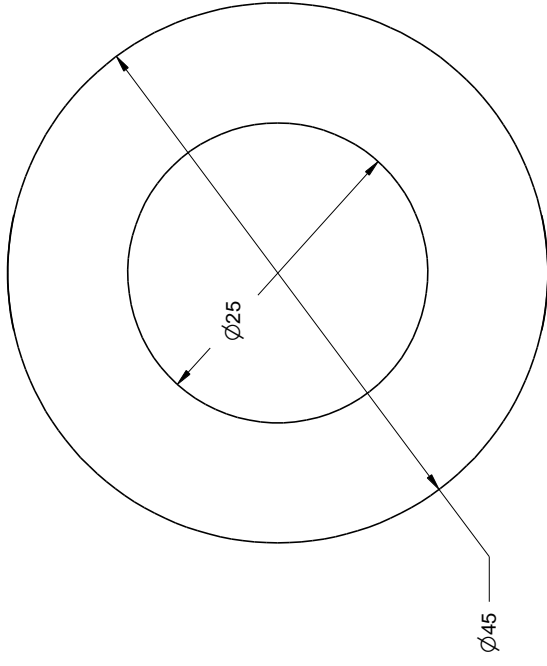
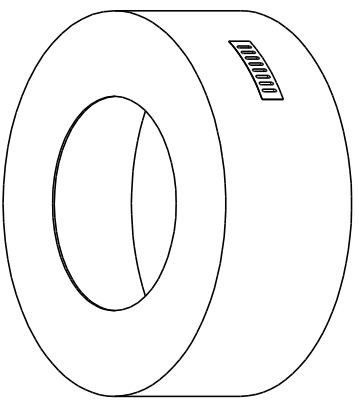



REVISIONS				
ZONE	REV	DESCRIPTION	DATE	APPROVED



Material: 22G Galvanized Steel Structure 1/2" Hardiboard shell	Additional info: Weighs 150 lbs. Optional 19" cut out for 19" Pan 304 Stainless steel vents Open bottom	Material: Do not pre-cut surface material. Only cut surface material after enclosure is on-site. HPC is not responsible for surface material that cracks or fails due to heat.	DRAWN Mike Chaffins	DATE 2/5/2015	<h1>FPE45-ROUND</h1>  Hearth Products Controls Co
		CHECKED QA	SCALE A	FSCM NO. DWG NO.	
		APPROVED	SIZE A	SCALE	SHEET