

# NAPOLEON

CHARCOAL SERIES

## LOW, SLOW, OR SEAR. CHARCOAL RE-INVENTED.



CHARCOAL SERIES

[napoleongrills.com](http://napoleongrills.com)





# GRILL, CHILL AND SMOKE

- ✓ **YOU VIEW PERFECT GRILL MARKS AS A BADGE OF HONOR.**
- ✓ **YOU THINK CUTTING INTO A STEAK TO CHECK DONENESS IS SACRILEGE.**
- ✓ **YOU KNOW WHEN AND WHY TO USE RUB VS. MARINADE VS. SAUCE.**

That's why you are ready for a Napoleon grill. Napoleon takes the art of grilling to a higher level. Every feature, every material is engineered to give ultimate performance - so you can create unforgettable meals and memorable moments. And just like you, we're not some rookie behind the grill. Napoleon is a family-owned company with over 20 passionate years of grill-making experience. Every great meal starts with the best ingredients. Start yours with the best grill out there: Napoleon.



We are proud to be recognized as one of Canada's Best Managed Companies and are dedicated to providing quality, home comfort products for over 38 years and counting.

# CHARCOAL PROFESSIONAL

## PR0605CSS



- Space saving, stainless steel **LIFT EASE™** roll top lid features the **ACCU-PROBE™** temperature gauge
- Integrated tool hooks
- Two charcoal dividers
- Air vents control the rate of burn for your choice of high intensity heat, slow roasting or smoking
- Chrome plated handles
- Solid stainless steel construction
- Exclusive rear charcoal rotisserie burner
- Easy front loading charcoal access door for refueling and easy cleaning
- Adjustable charcoal bed for multi-level heat control



Rear **Charcoal Rotisserie** Burner



Charcoal **Access Door**



**Adjustable** Charcoal Bed



**Air Vents**

### ACCU-PROBE™ TEMPERATURE GAUGE

Safely and instantly read the internal temperature of your grill with the lid closed. This thermometer has a wide temperature measurement range from 0° to 370°C (0° to 700°F) and includes the ideal smoking and searing range.





# PRO CHARCOAL SERIES

PRO22K-LEG AND CART MODELS



- Folding stainless steel shelf for added storage space
- Heavy gauge steel charcoal grate
- Heavy gauge black porcelain lid and bowl
- Powder coated cart
- Weather proof, easy locking casters
- Removable high capacity, heavy steel ash catcher with superior air control system
- Stainless steel heat diffuser
- Cast iron hinged cooking grids with three height adjustments
- Offset hinged lid for safe operation over the entire cooking surface
- ACCU-PROBE™ temperature gauge and rust free air vent



## OPTIONAL Stainless Steel Toolset Hanger

Custom and convenient, this tool hanger perfectly fits around the edge of the Napoleon charcoal kettle. Now your favorite grilling accessories are within a seconds reach while you grill and entertain.



## CHARCOAL PRO CART



### PRO CHARCOAL CART PRO22K-CART

Cooking Area: 365 in<sup>2</sup> (2340 cm<sup>2</sup>)  
Diameter: 22.5 in (57 cm)

## CHARCOAL PRO



### PRO CHARCOAL LEG PRO22K-LEG

Cooking Area: 365 in<sup>2</sup> (2340 cm<sup>2</sup>)  
Diameter: 22.5 in (57 cm)



**Hinged** Cooking Grids  
Three Height Adjustments



**ACCU-PROBE™**  
Temperature Gauge



**Stainless Steel**  
Heat Diffuser



**Ergonomic** Hinged Lid



Removable **Heavy Steel**  
**Ash Catcher** with Superior  
Air Control System

## ADD SOME VERSATILITY AND COOKING SPACE

The optional kettle warming rack, designed for all 22.5" diameter kettles. Napoleon's warming rack is the perfect accessory adding 60 sq. in. of extra cooking space. Use it to keep prepared food warm while still grilling or to quickly warm your buns and baked potatoes. It's also perfect for indirect cooking and baking on the grill, for that low and slow barbecue flavor.

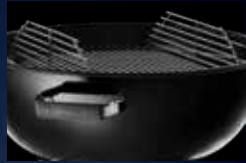




## CHARCOAL KETTLE NK22K-LEG



**ACCU-PROBE™**  
Temperature Gauge



**Hinged** Cooking Grids



**Cool Touch** Handle



Built-In **Lid Hanger**



**Stainless Steel**  
Heat Diffuser

- Folding stainless steel shelf for added storage space
- Heavy gauge steel charcoal grate
- Heavy gauge black porcelain lid and bowl
- Powder coated cart
- Weather proof, easy locking casters
- Removable high capacity, heavy steel ash catcher with superior air control system
- Stainless steel heat diffuser
- Cast iron hinged cooking grids with three height adjustments
- Offset hinged lid for safe operation over the entire cooking surface
- **ACCU-PROBE™** temperature gauge and rust free air vent



### MEAT/FISH HOOKS

Ribs, sausage, whole fish or long cuts of meat can be hung easily in the smoking chamber. The access doors make it easy to add wood chips or charcoal without removing the lid.

Total Cooking Area: 570 in<sup>2</sup> (3660 cm<sup>2</sup>)  
Diameter: 19 in (48 cm)

**APOLLO**

## APOLLO<sup>®</sup> SMOKER AS300K



- Temperature eyelets at each grill level provide access for inserting a thermometer probe
- ACCU-PROBE<sup>™</sup> temperature gauge and rust free air vent
- Hinged, tightly fitting doors with easy access to the water pan and charcoal basket
- Each cooking chamber (stacker) contains a 19 inch cooking grate
- Multiple vents for excellent temperature control
- 3 in 1 Apollo<sup>®</sup> smoker grill for wet and dry smoking or as a stand alone charcoal grill with lid
- Upper lid contains a horizontal bar with 5 hooks for hanging fish, ribs or sausages

### AS200K

Total Cooking Area:  
402 in<sup>2</sup> (2600 cm<sup>2</sup>)  
Diameter: 16 in (41 cm)



Sturdy Lid Handle



Easy Access Doors



Temperature Control Vent



Portable

### WATER SMOKING

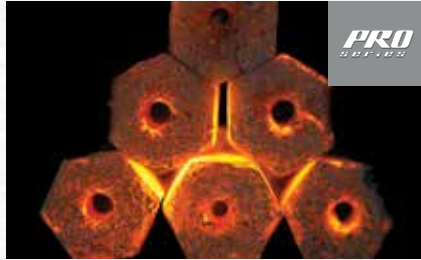
Remember when you're preparing a long weekend of smoking meat or fish that water smoking is a great way to bring up the heat and get a nice steam for perfect succulent results. Add a pan of apple cider or orange juice to really kick up the flavor.



# UPGRADE YOUR GRILLING ACCESSORIES



**Wireless Digital Thermometer**  
70006



**Coconut Charcoal**  
67301



**Blackstone Premium Charcoal**  
67101



**Charcoal Starter**  
67800



**Charcoal Baskets**  
67400



**Charcoal Kettle Tool Hanger**  
55100



**Large Drip Trays**  
62008



**Cast Iron Sizzle Platter**  
56008



**AS300K Apollo® Grill Cover**  
61900



**Kettle Leg Grill Cover**  
61910



**Kettle Cart Cover**  
61911



**Wood Chip Starter Kit**  
67020





**Healthy Choice Starter Kit**  
90003



**Meat Tenderizer**  
55204



**10" Baking Stone Set**  
70000



**Rectangular Baking Stone**  
70008



**8 Stainless Steel Skewers**  
70015



**Stainless Steel Grilling Wok**  
56026



**Chicken Roaster & Wok**  
56024



**Wood Chip Starter Kit**  
67020



**Flexible Grill Basket**  
57012



**Cast Iron Charcoal/Smoker Tray**  
67732



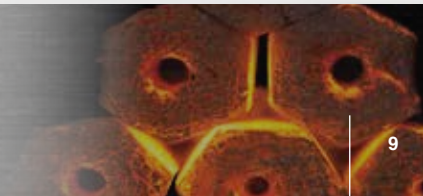
**Stainless Steel Rotating Skewer Rack**  
70014



**Super WAVE Grill Brush**  
62013

## CHARCOAL STARTER

Start your charcoal grill in no time with a fast and easy charcoal chimney starter. Simply crumple newspapers underneath the grill starter, fill the main part with charcoal, light the paper through the holes at the bottom and you will have blazing red charcoals that are perfect for grilling.





# THE ANATOMY OF THE PERFECT GRILL



Sturdy handle doubles as a towel holder

Heavy gauge black porcelain lid and bowl

**ACCU-PROBE™**  
Temperature gauge with rust free air vent

Cast iron hinged cooking grids with three height adjustments

Ergonomic hinged lid for safe operation over the entire cooking surface

Stainless steel heat diffuser

Removable high capacity, heavy steel ash catcher

Stainless steel legs

Sturdy four legged design with weather proof wheels

Convenient storage shelf



SPECIFICATIONS	PR0605CSS	PR022K-CART	PR022K-LEG	NK22K-LEG	AS300K	AS200K
*Lid colour	ss	bk	bk	bk	bk	bk
ACCU-PROBE™ temperature gauge	S	S	S	S	S	S
Exclusive removable rear charcoal rotisserie burner	S	-	-	-	-	-
Plated cooking grids	-	-	-	S	S	S
Cast iron WAVE™ cooking grids	S	S	S	-	-	-
Warming rack	S	O	O	O	-	-
EASY ROLL™ locking casters	S	S	-	-	-	-
Folding side shelf	-	S	-	-	-	-
Built-in lid hanger	-	-	-	S	-	-
Ergonomic hinged lid	-	S	S	-	-	-
Cool Touch handle	S	S	S	S	S	S
Removable heavy steel ash catcher	S	S	S	S	-	-
Stainless steel heat diffuser	-	S	S	S	-	-
Weather proof wheels	-	S	S	S	-	-
Adjustable charcoal bed	S	-	-	-	-	-
Adjustable grid height	-	S	S	-	-	-
Easy access doors	S	-	-	-	S	S
Adjustable air vents	S	S	S	S	S	S
Stackers (also available separately for add-ons)	-	-	-	-	S	S
President's Limited Lifetime Warranty	S	S	S	S	-	-
ACCESSORIES	PR0605CSS	PR022K-CART	PR022K-LEG	NK22K-LEG	AS300K	AS200K
Commercial quality rotisserie kit – 4 Forks	O	-	-	-	-	-
Heat resistant gloves	O	O	O	O	O	O
Drip trays	O	O	O	O	O	O
Charcoal starter	O	O	O	O	O	O
Toolset hanger	-	-	O	O	-	-
Charcoal baskets	-	S	O	O	-	-
Heavy duty cover	O	O	O	O	O	O
DIMENSIONS	PR0605CSS	PR022K-CART	PR022K-LEG	NK22K-LEG	AS300K	AS200K
Total width in inches (cm) shelf up / shelf down	67 ½ (171)	44 ¾ (113) / 31 ¼ (79)	23 (59)	23 (59)	19 ½ (50)	16 ½ (42)
Total depth in inches (cm)	24 ¾ (63)	28 ½ (72)	28 ½ (72)	27 ¾ (70)	19 ½ (50)	16 ½ (42)
Total height in inches (cm) lid closed / lid open	49 ¼ (125) / 59 ¼ (151)	41 ¾ (106) / 60 (152)	40 ½ (103) / 63 ¾ (162)	44 (112)	47 ¾ (120)	41 (104)

S = standard O = optional \*Lid Colours: ss = stainless steel, bk = black



# NAPOLEON - CELEBRATING OVER 40 YEARS OF HOME COMFORT PRODUCTS



24 Napoleon Rd., Barrie, Ontario, L4M 0G8  
103 Miller Drive, Crittenden, Kentucky, USA 41030  
7200 Trans Canada Highway, Montreal, Quebec H4T 1A3

PHONE: 866-820-8686  
napoleongrills.com  
grills@napoleonproducts.com

Approved by Intertek Testing Services to standards in the USA and Canada: ANSI Z21.58 / CSA 1.6 - Outdoor Cooking Gas Appliances. All specifications and designs are subject to change without prior notice due to ongoing product improvements. Consult your owner's manual for complete installation and operating instructions and check all local and national Building Codes and Regulations. Not all features available on all models. Napoleon is a registered trademark of Wolf Steel Ltd. Images and colors may not be exactly as shown.

Authorized Dealer



Printed in Canada  
ADBRCFL 05/2018