

INSTALLATION INSTRUCTIONS AND OWNER'S MANUAL

INSTALLER:

Leave this manual with the appliance.

CONSUMER:

Retain this manual for future reference.

⚠ WARNING

FIRE OR EXPLOSION HAZARD

Failure to follow safety warnings exactly could result in serious injury, death or property damage.

- Do not store or use gasoline or other flammable vapors and liquids in the vicinity of this or any other appliance.
- **WHAT TO DO IF YOU SMELL GAS**
 - Do not try to light any appliance.
 - Do not touch any electrical switch; do not use any phone in your building.
 - Leave the building immediately.
 - Immediately call your gas supplier from a neighbor's phone. Follow the gas supplier's instructions.
 - If you cannot reach your gas supplier, call the fire department.
- Installation and service must be performed by a qualified installer, service agency or the gas supplier.

LOG SET MODELS

LS30TINF

For Use With DVCT30CBN-1

Fireplace Inserts

GAS-FIRED



NOTICE: Ceramic logs may differ in appearance from those shown in this manual.

⚠ WARNING

If not installed, operated and maintained in accordance with the manufacturer's instructions, this product could expose you to substances in fuel or from fuel combustion which can cause death or serious illness.



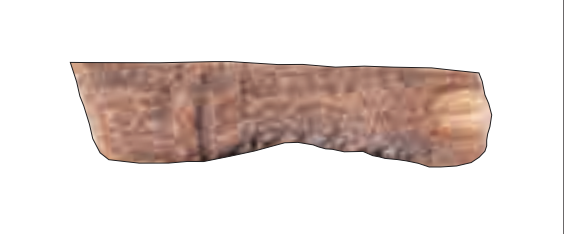
NATIONAL
FIREPLACE
INSTITUTE



CERTIFIED
www.nficertified.org

We suggest that our gas hearth products be installed and serviced by professionals who are certified in the U.S. by the National Fireplace Institute® (NFI) as NFI Gas Specialists.

LOG IDENTIFICATION

PART NO.	DESCRIPTION	DVCT30 LOG SET	
		FRONT	TOP
38392	EMBER BED (A)		
38393	REAR LOG (B)		
38394	RIGHT EMBER CHUNK (C)		
38395	LEFT EMBER CHUNK (D)		
38396	RIGHT LOG (E)		
38397	RIGHT CENTER LOG (F)		
38398	LEFT CENTER LOG (G)		

LOG IDENTIFICATION

PART NO.	DESCRIPTION	DVCT30 LOG SET	
		FRONT	TOP
38399	LEFT LOG (H)		
38400	LEFT LOG CHUNK (I)		
38401	TOP CENTER LOG (J)		
38402	CENTER FRONT EMBER LOG (K)		
38403	LEFT FRONT EMBER LOG (L)		
15496	Glowing Embers		
36747	Coals (100)		

LOG AND EMBER PLACEMENT

NOTICE: Install liners before logs. See separate Liner Installation manual for details.

CAUTION

This fireplace is supplied with a set of twelve ceramic fiber logs. Do not handle these logs with your bare hands. Always wear gloves to prevent skin irritation from ceramic fibers. After handling the logs, wash your hands gently with soap and water to remove any trace of fibers.

Accessing the Interior of the Fireplace

See Homeowners Manual for instruction on how to remove the barrier screen and glass door.

Log Set Installation

The positioning of the logs is critical to the safe and clean operation of this fireplace. Sooting and other problems may result if the logs are not properly and firmly positioned in the fireplace. Please refer to (Figure 1) and the following **WARNING** when completing log placement instructions. For step by step log placement instructions, See Pages 5 - 17 or reference (Figure 2).

WARNING

Failure to position the parts in accordance with this diagram or failure to use only parts specifically approved with this fireplace may result in property damage or personal injury.

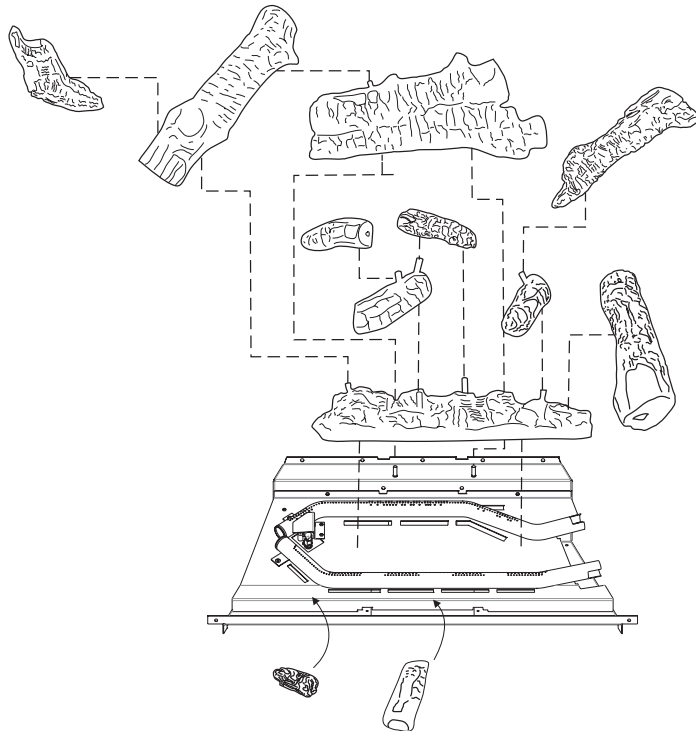


Figure 1

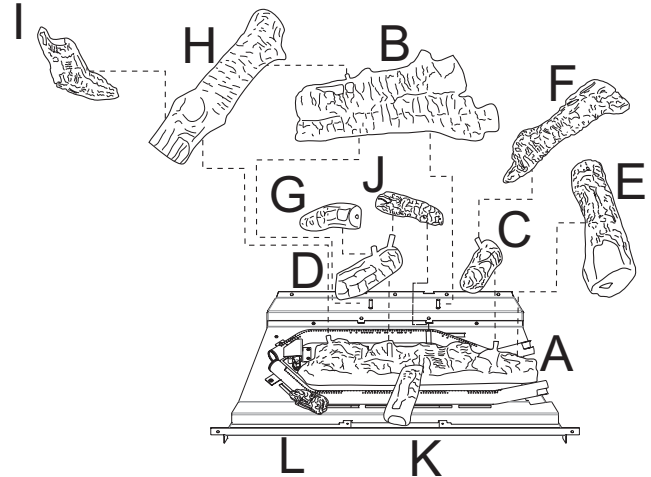


Figure 2

Glowing Embers Information

1. Carefully separate the ember material into small amounts (no larger than "quarter-size" pieces).
 - a. Fluffed up pieces of ember material one layer thick will produce the best ember glow. Do not place more than one layer of ember material onto the burner. Excess ember material will decrease the ember glow effect.
 - b. Save any remaining ember material for future applications (as needed).

NOTICE: You may place logs A & B prior to adding glowing embers on burners.

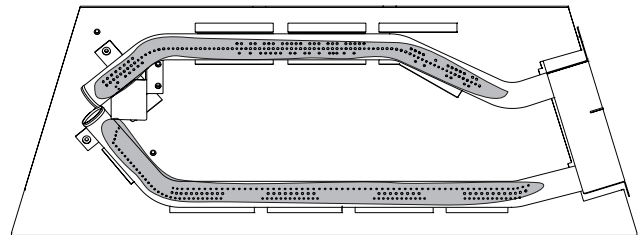


Figure 3

Coal Information

1. Coals may be placed along the front burner as shown in Figure 4. Coals may not be placed over burner ports.

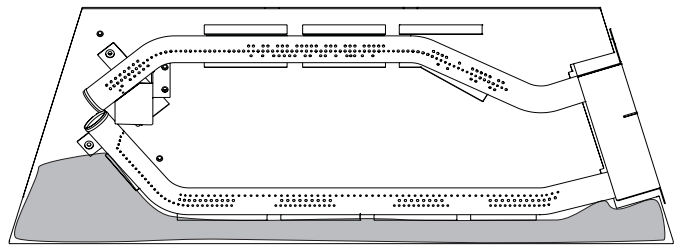
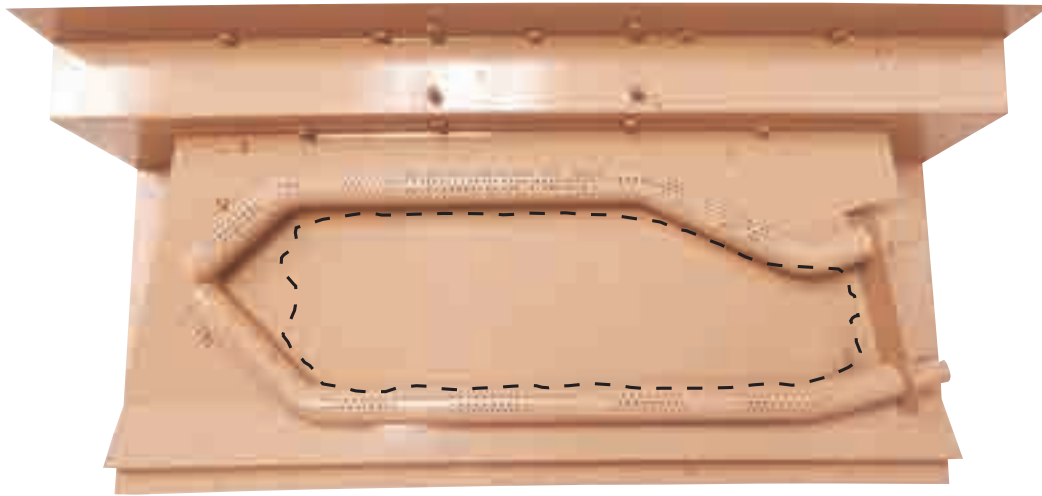


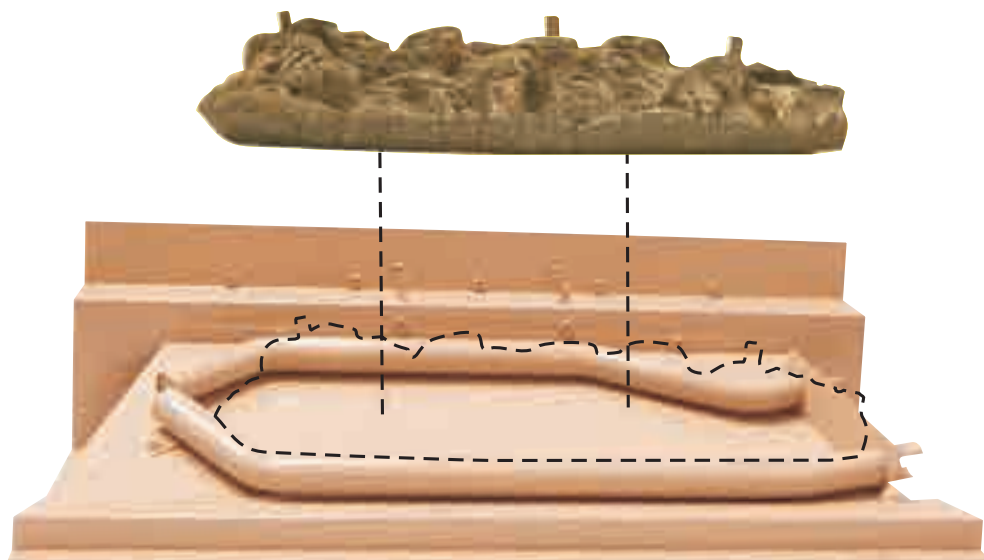
Figure 4

LOG AND EMBER PLACEMENT

1. Place the large charred **Ember Bed (A)** onto burner base log assembly



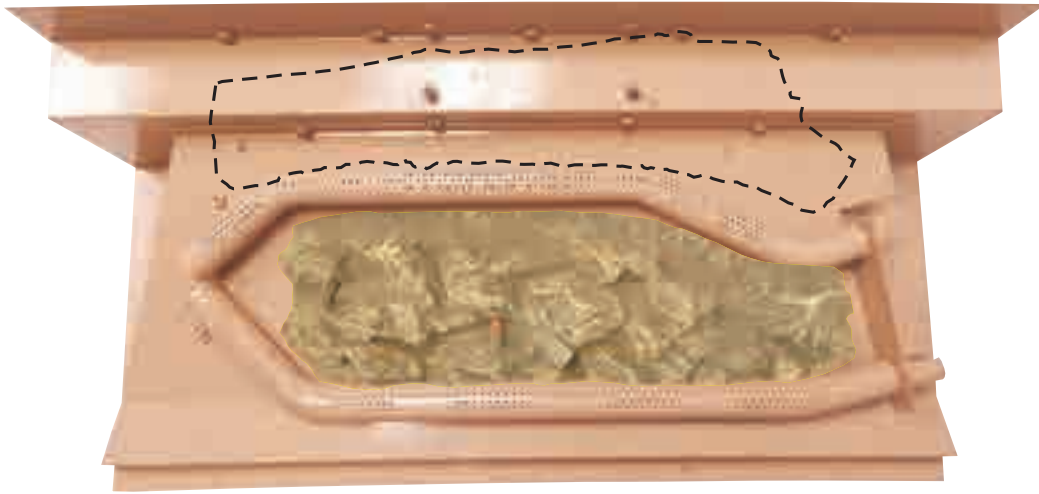
TOP VIEW



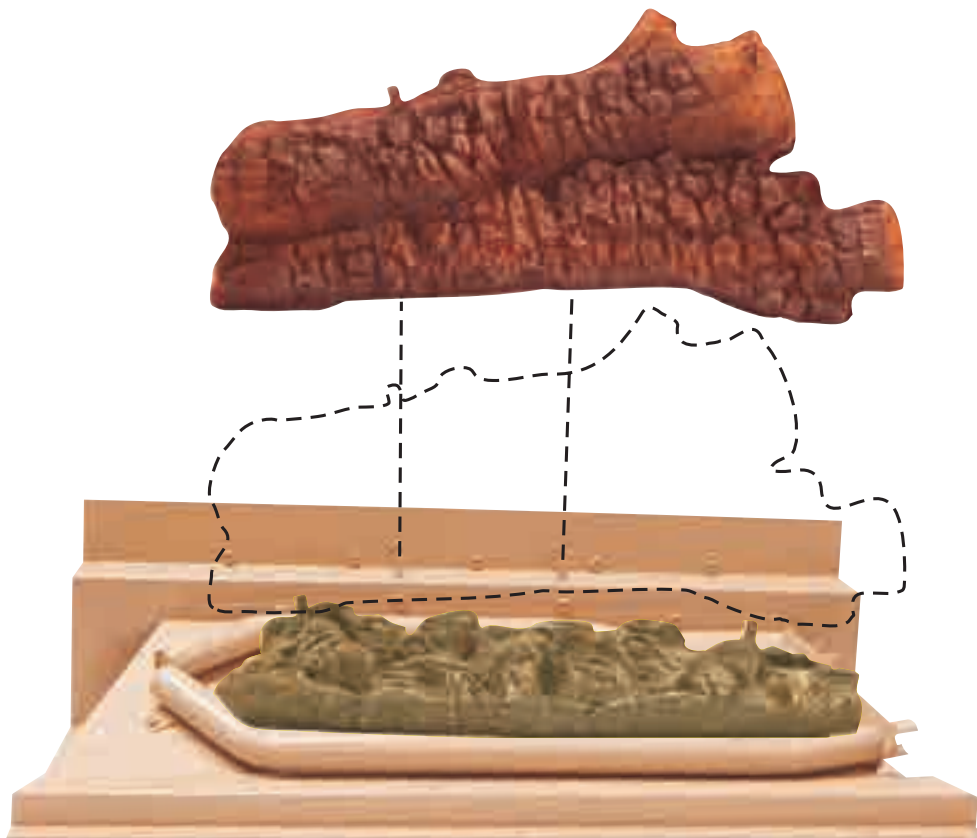
FRONT VIEW

LOG PLACEMENT

2. Place **Rear Log (B)** onto burner pins as shown.



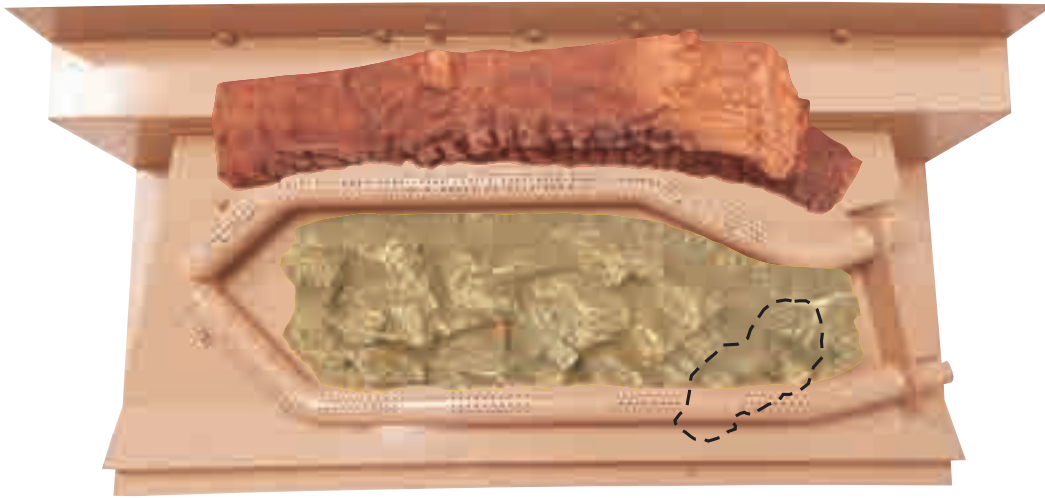
TOP VIEW



FRONT VIEW

LOG PLACEMENT

3. Place **Right Ember Chunk (C)** on the front burner and onto pin on **Ember Bed (A)**.



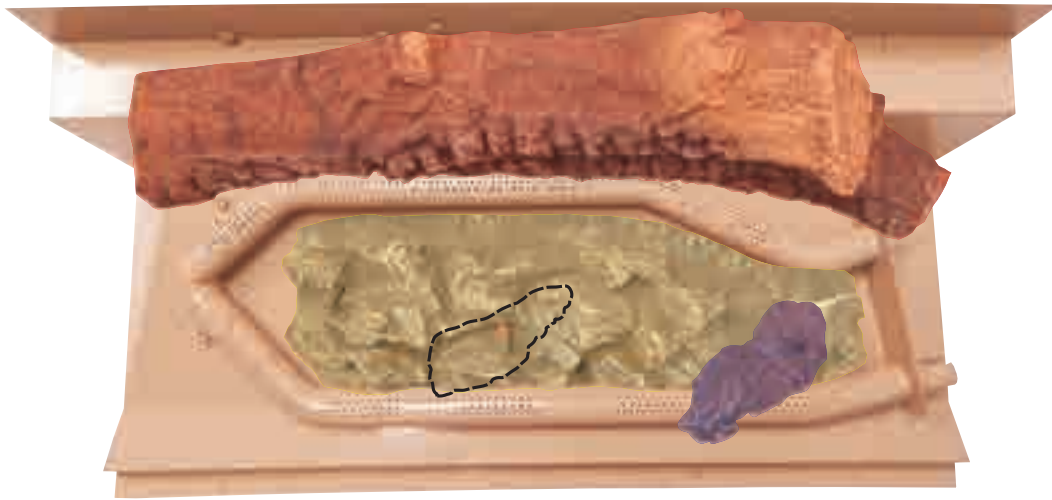
TOP VIEW



FRONT VIEW

LOG PLACEMENT

4. Place **Left Ember Chunk (D)** onto pin shown on **Ember Bed (A)**.



TOP VIEW



FRONT VIEW

LOG PLACEMENT

5. Place **Right Log (E)** along wall as shown.



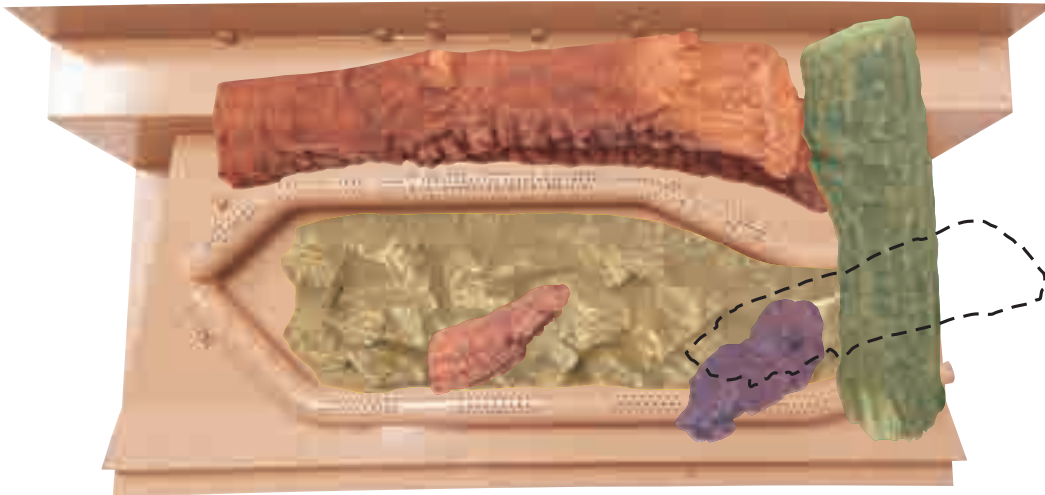
TOP VIEW



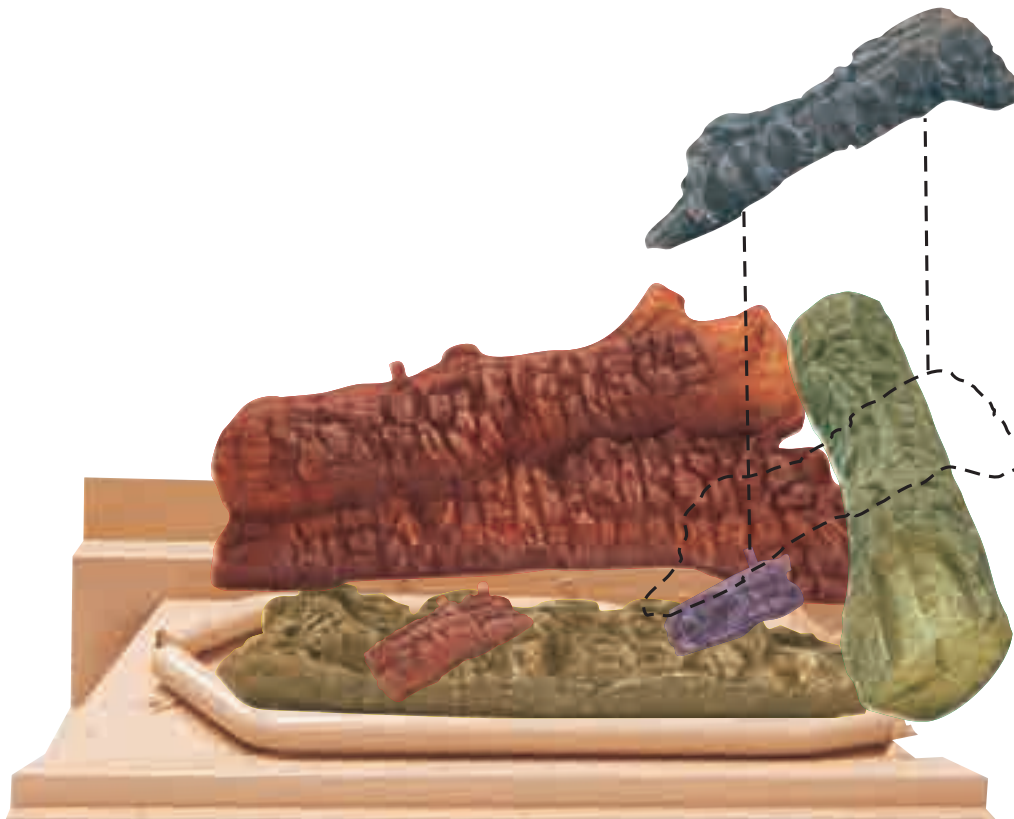
FRONT VIEW

LOG PLACEMENT

- Place **Log (F)** on the right rear of the burner base. Align with the angle of the burner tube.



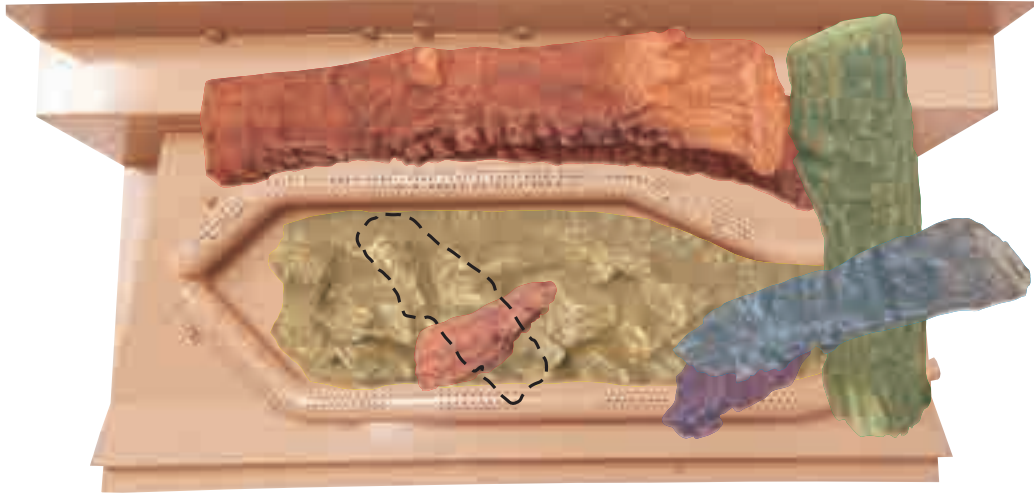
TOP VIEW



FRONT VIEW

LOG PLACEMENT

7. Place **Left Center Log (G)** onto pin of **Left Ember Chunk (D)** and lay across **Ember Bed (A)** as shown.



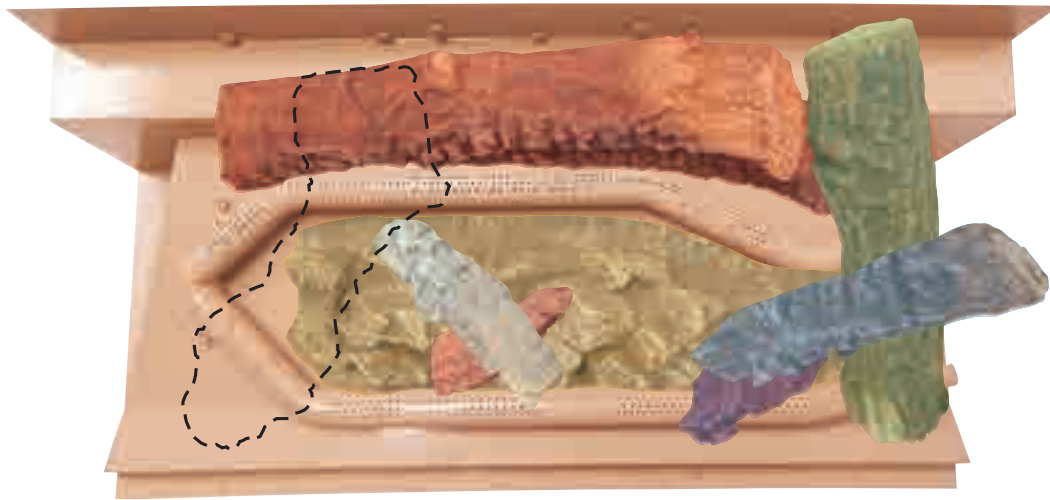
TOP VIEW



FRONT VIEW

LOG PLACEMENT

8. Place **Left Log (H)** onto **Ember Bed (A)** pin and **Rear Log (B)** pin as shown.



TOP VIEW



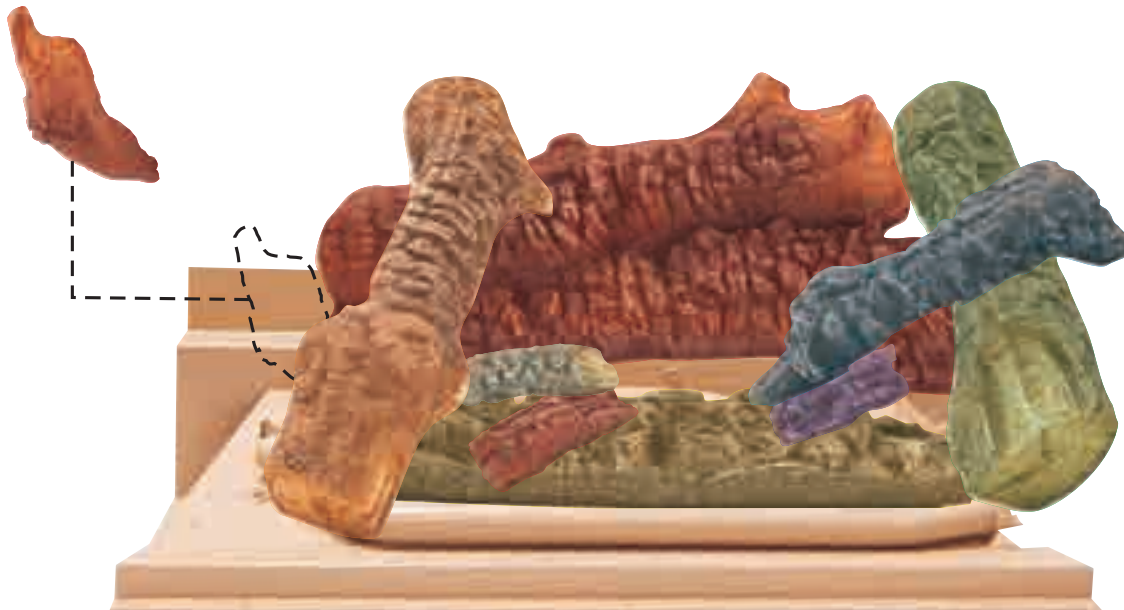
FRONT VIEW

LOG PLACEMENT

9. Place **Left Log Chunk (I)** over **Left Log (H)** as shown.



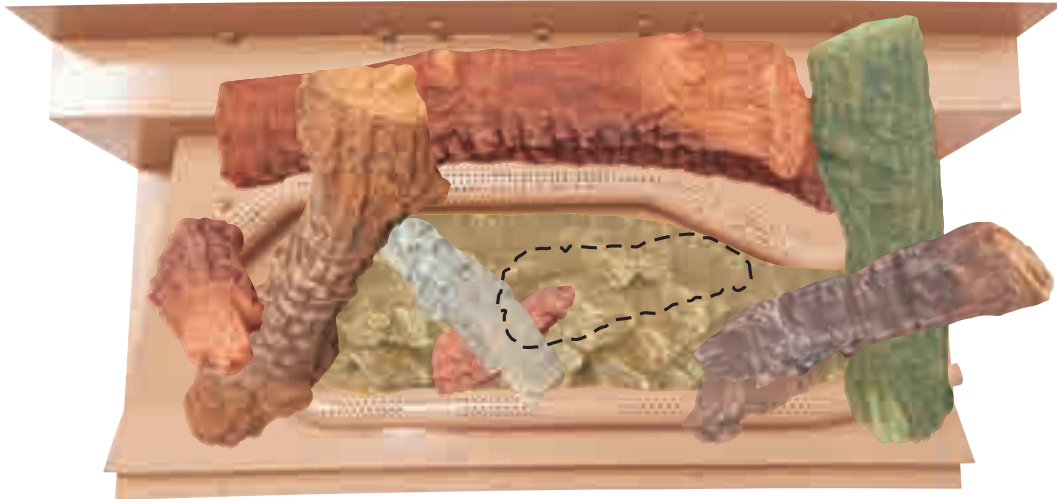
TOP VIEW



FRONT VIEW

LOG PLACEMENT

10. Place **Top Center Log (J)** onto pin **Left Ember Chunk (D)** and pin **Ember Bed (A)**.



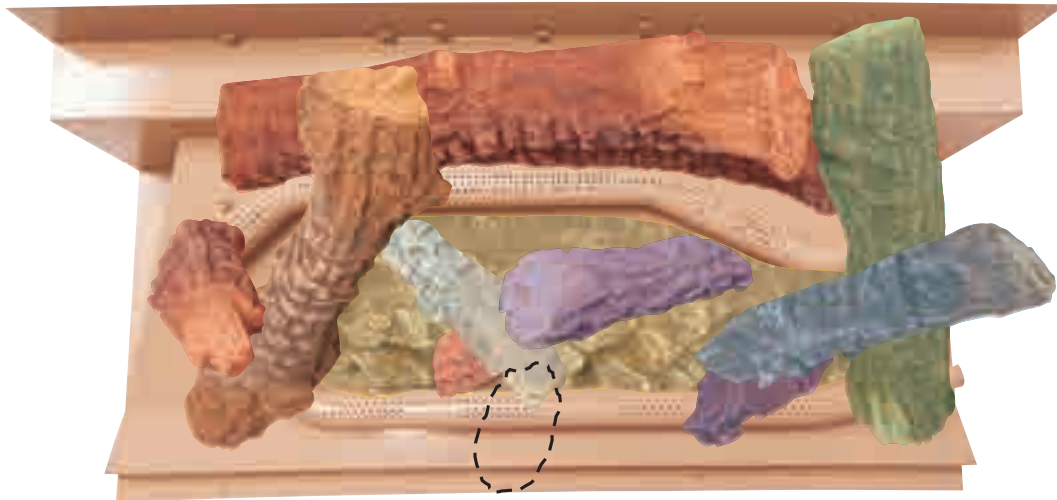
TOP VIEW



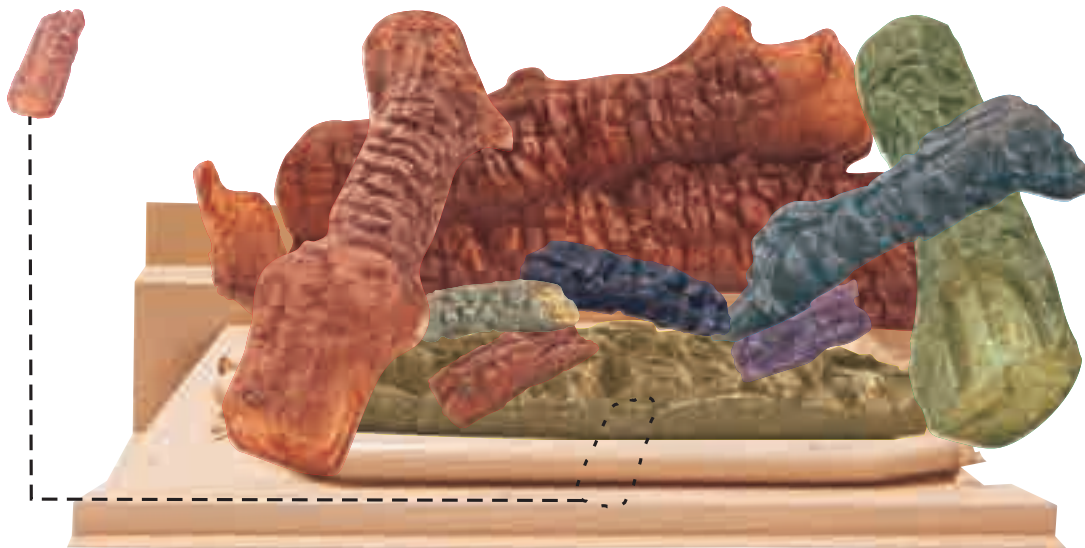
FRONT VIEW

LOG PLACEMENT

11. Place **Center Front Ember Log (K)** as shown.



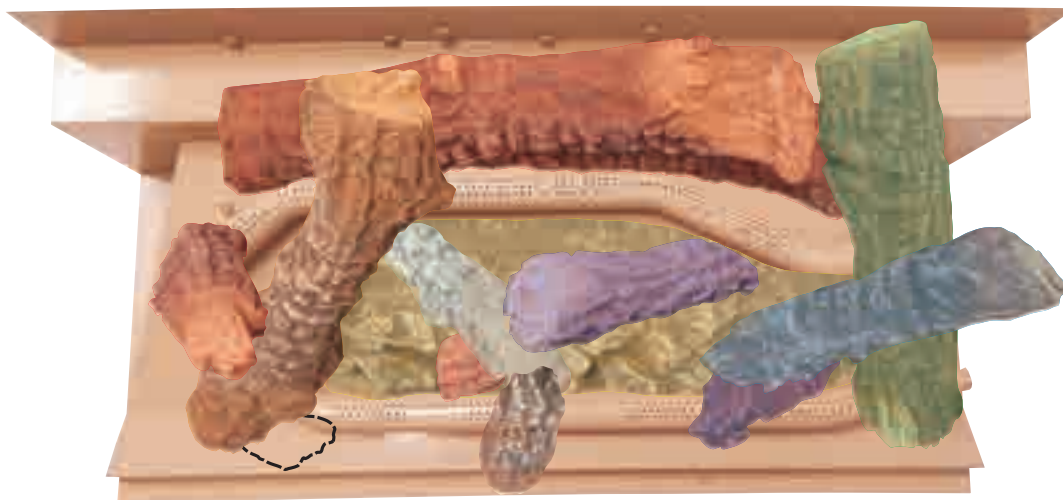
TOP VIEW



FRONT VIEW

LOG PLACEMENT

12. Place **Left Front Ember Log (L)** on left side as shown.



TOP VIEW



FRONT VIEW

LOG PLACEMENT

13. Place **Decorative Coals** along the front and sides of burner. **DO NOT** cover burner ports. **The log set is complete.**



TOP VIEW



FRONT VIEW

MASTER PARTS DISTRIBUTOR LIST

To Order Parts Under Warranty, please contact your local Empire dealer. See the dealer locator at www.empirecomfort.com. To provide warranty service, your dealer will need your name and address, purchase date and serial number, and the nature of the problem with the unit.

To Order Parts After the Warranty Period, please contact your dealer or one of the Master Parts Distributors listed below. This list changes from time to time. For the current list, please click on the Master Parts button at www.empirecomfort.com. Please note: Master Parts Distributors are independent businesses that stock the most commonly ordered Original Equipment repair parts for Heaters, Grills, and Fireplaces manufactured by Empire Comfort Systems Inc.

Dey Distributing

1401 Willow Lake Boulevard
Vadnais Heights, MN 55101

Phone: 651-490-9191

Toll Free: 800-397-1339

Website: www.deydistributing.com

Parts: Heater, Hearth and Grills

F. W. Webb Company

200 Locust Street
Hartford, CT 06114

Phone: 860-722-2433

Toll Free: 800-243-9360

Fax: 860-293-0479

Toll Free Fax: 800-274-2004

Websites: www.fwwebb.com & www.victormfg.com

Parts: Heater, Hearth and Grills

East Coast Energy Products

10 East Route 36
West Long Branch, NJ 07764

Phone: 732-870-8809

Toll Free: 800-755-8809

Fax: 732-870-8811

Website: www.eastcoastenergy.com

Parts: Heater, Hearth and Grills

HOW TO ORDER REPAIR PARTS

Parts Not Under Warranty

Parts can be ordered through your Service Person, Dealer, or a Master Parts Distributor. See this page for the Master Parts Distributors list. For best results, the **service person or dealer** should order parts through the distributor. Parts can be shipped directly to the **service person/dealer**.

Warranty Parts

Warranty parts will need a proof of purchase and can be ordered by your Service Person or Dealer. Proof of purchase is **required** for warranty parts.

All parts listed in the Parts List have a Part Number. When ordering parts, first obtain the Model Number and Serial Number from the name plate on your equipment. Then determine the Part Number (**not** the Index Number) and the Description of each part from the following illustration and part list. Be sure to give all this information . . .

Appliance Model Number _____ Part Description _____

Appliance Serial Number _____ Part Number _____

Type of Gas (Propane or Natural) _____

Do not order bolts, screws, washers or nuts. These standard hardware items can be purchased at any local hardware store.



**Empire Comfort Systems Inc.
Belleville, IL**

If you have a general question
about our products, please e-mail
us at info@empirecomfort.com.

If you have a service or repair
question, please contact your dealer.

SINCE 1932

www.empirecomfort.com