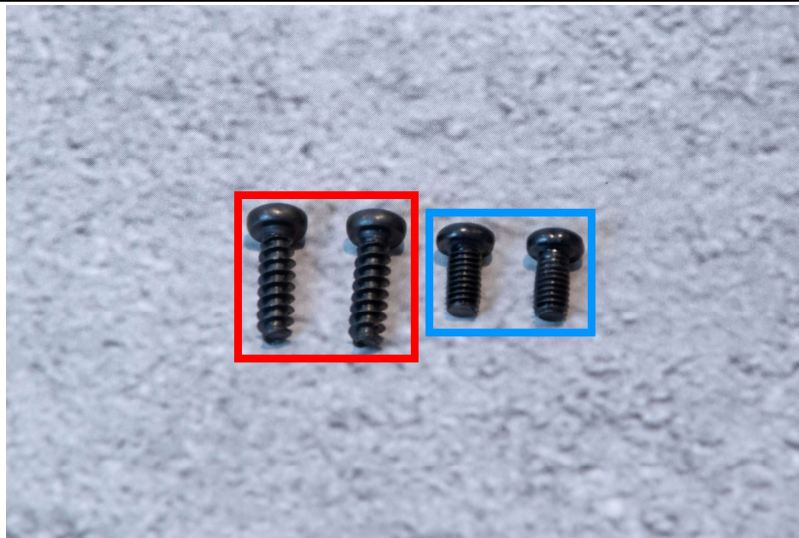


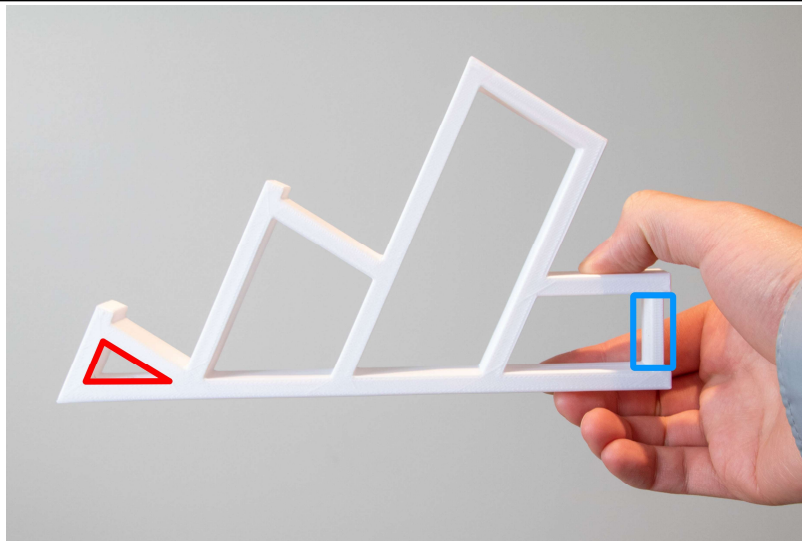
Items you have received: **2 frames**, **front connector**, **back connector**, **screw bag**. You will also need your own **screwdriver**.

1



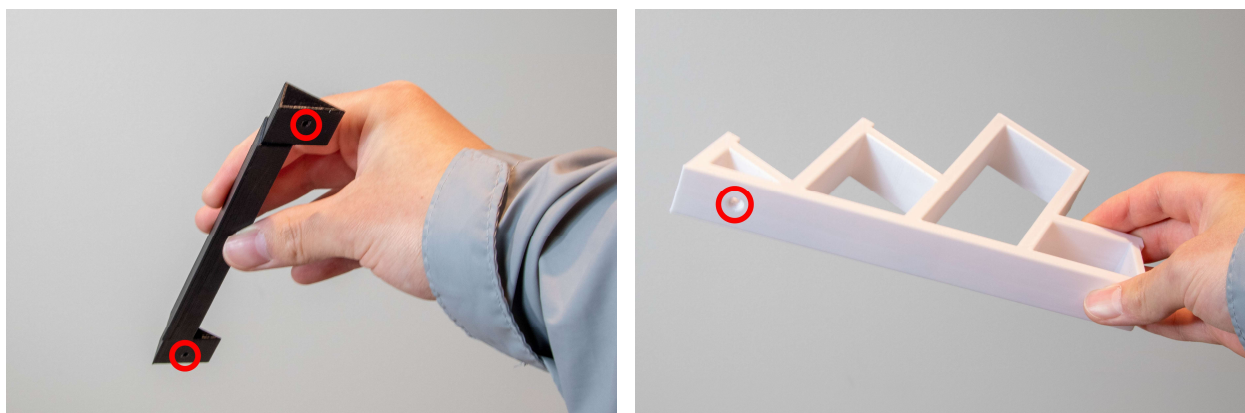
In the screw bag, you will have 2 different types of screws. The **long ones** are for the **front connector**, the **short ones** for the **back connector**.

2



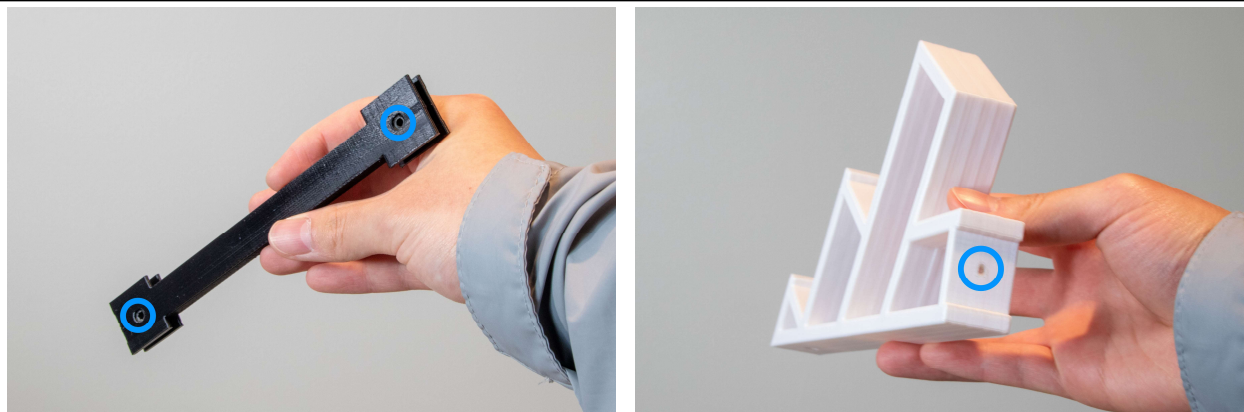
These are the places where the connectors are attached, **red for the front connector**, and **blue for the back connector**.

3



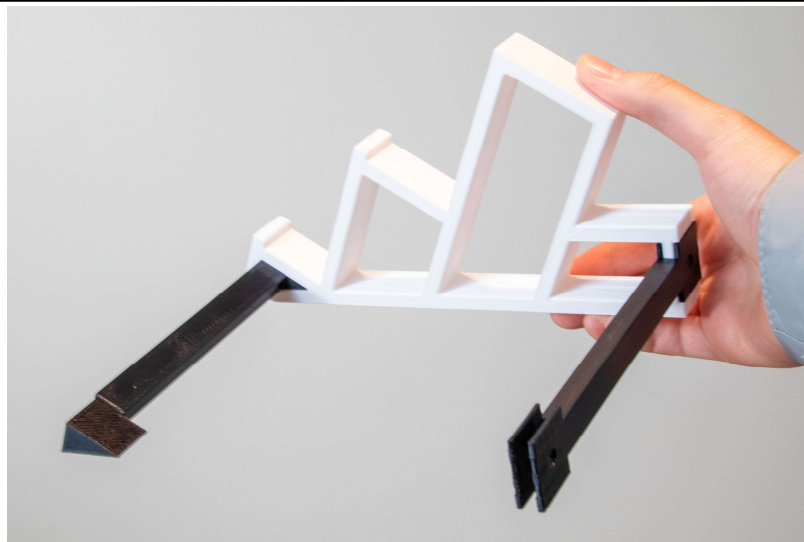
Insert the front connector, **screw holes on the connector(left)** should line up with the **hole on the frame(right)**. The connector can only be inserted one way.

4



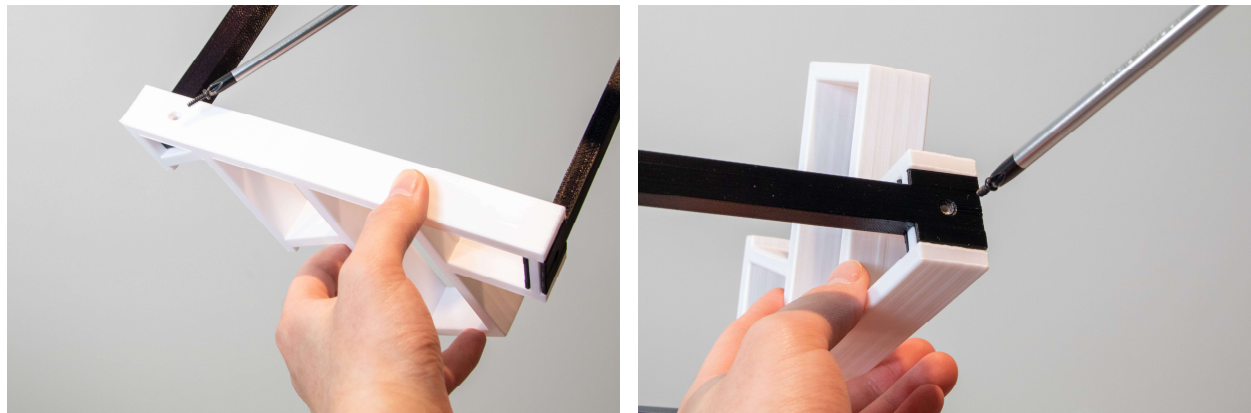
Insert the back connector, **screw holes on the connector(left) should line up with the hole on the frame(right)**. The connector can be inserted multiple ways.

5



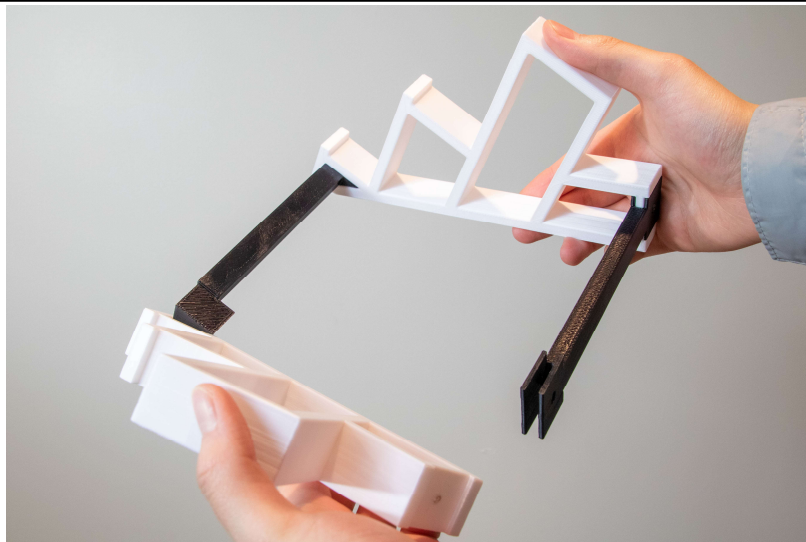
Your stand should currently look like this.

6



Screw in your screws, make sure to use the correct screws as mentioned on slide 2.

7



Repeat steps 4-7 with the remaining frame.

8