

Acceptable Quality Standards



Switch Break-in Machine

Feng Studio

Below are the manufacturing standards to be expected with the purchase and use of this product. Some variations are to be expected from the provided images.

Surface Imperfections

The top and bottom surfaces have a different texture, with the bottom being smooth and the top being rough.

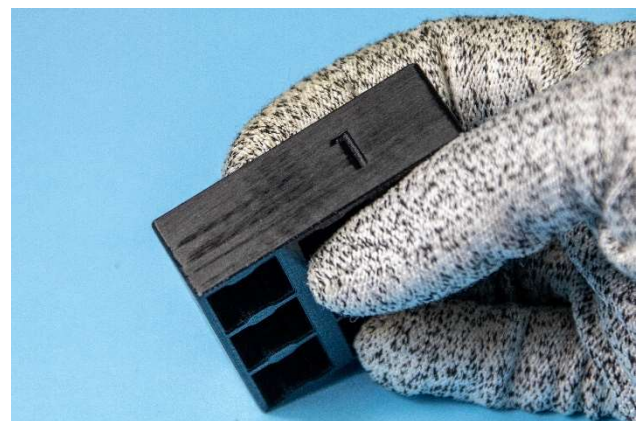
This is due to the bottom surface resting on the bed, while the top surface does not rest on a smooth surface.



Sanding Marks

Marks will be leftover from sanding and post-processing. This will result in a slightly matte and uneven texture, since the surface is smoothed by sandpaper.

This is required in order to achieve smooth movements and minimize grinding and friction.





Layer Visibility

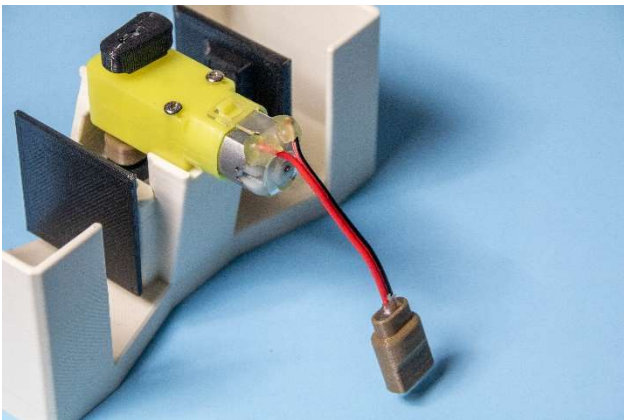
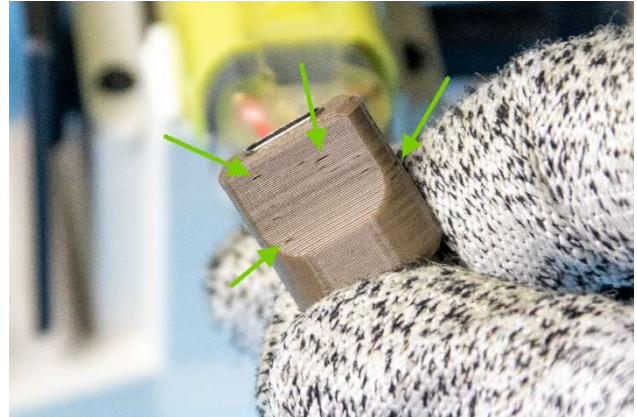
Separate layers will be visible on the sides of the product running parallel to the green arrow.

This is due to how liquid plastic is layered in 3D printing.

Other Imperfections

Small holes/protrusions will be visible on the surfaces of the product, especially on smaller parts like the USB connector housing.

This is due to the accuracy limitations on printers.



Messy Hot Glue

Hot glue is manually applied to the motor and inside the USB housing to secure the connections and avoid shorting.

These imperfections are purely cosmetic.

Note:

Effects of the imperfections demonstrated above will show up differently on different colored filaments. Imperfections are usually hidden better by light colored (white) filaments than darker ones (black).