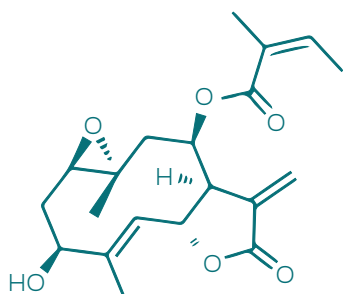


TECHNICAL DATA SHEET

FOR LEPTOCARPIN



NAME	<i>Leptocarpin</i>
CAS	73522-63-1
ORIGIN	Chile
RAW MATERIAL	<i>Leptocarpha rivularis</i>
APPEARANCE	Liquid
MOLECULAR FORMULA	$C_{20}H_{26}O_6$
MOLECULAR WEIGHT	362.4
PROPERTIES AND APPLICATION	Cytotoxic and apoptotic effects of leptocarpin, a plant-derived sesquiterpene lactone, on human cancer cell lines
DURATION	36 months
CONSERVATION	Fresh and dry atmosphere. Photosensitive: Protect from sunlight

Ancient
knowledge
for
today's
science.