

# META Surface

Wall Mount | Vertical Architectural Linear



The Meta Surface is available in a surface reverted design, with a sleek low-profile sensibility optimal for architectural lighting applications, ideal for corridors, stairwells, and more.

Meta Surface's eye-catching, sloping silhouette profile features an elegant finishing touch, with simple screws or threaded studs which pass through the housing to mount the luminaire in place.

With wattage adjustable and CCT selectable function, Meta Surface also has the flexibility to illuminate many types of spaces, packing a powerful punch of up to 1300 lumens per foot with 90+CRI.

## Feature

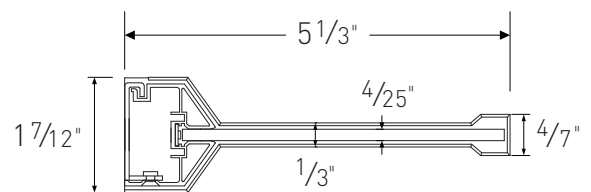
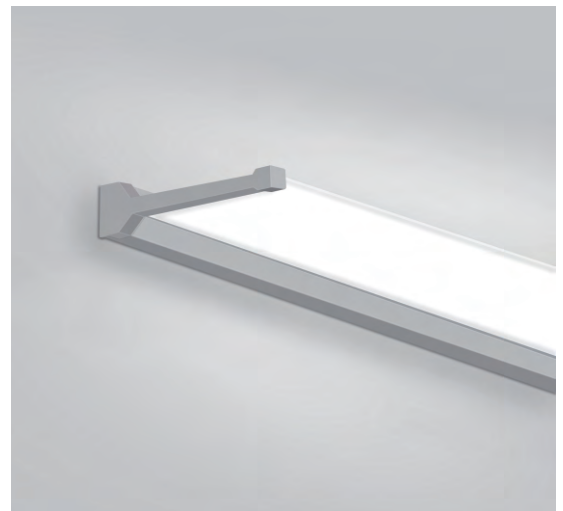
3 lengths & sloping silhouette

Transparent optics

Up to 1300 lm/ft

True color, 90+CRI

CCT selectable and wattage adjustable



## PERFORMANCE

Length	Lumen Package		
	High	Medium	Low
2'	1000lm/ft, 10w/ft	–	–
3'	1300lm/ft, 13w/ft	1000lm/ft, 10w/ft	650lm/ft, 6.5w/ft
4'	1000lm/ft, 10w/ft	750lm/ft, 7.5w/ft	500lm/ft, 5w/ft

\*All efficacy is ±5% base on different CCT. Check the IES file to gain the accurate data.

OKT Lighting. All right reserved. Product design and development is an ongoing process by OKT Lighting. We reserve the right to change specifications.

# META Surface

Wall Mount | Vertical Architectural Linear



## STRUCTURE

### Optics

Ultra-thin semi-transparent optics, enveloped in a signature sloping silhouette where the frame meets the optics.

### Finish

Extruded aluminum housing with powder coat white finish.

### Electrical

Min Internal LED Driver	It is powered by Class 2 high efficiency LED driver, with a standard 1-10V dimming which continuous dims to 10% that works with many types of controls. Tested Dimmers: Lutron® Diva-Dvtv, Leviton® IP-710-DL.
THD	<20%
Power Factor	>0.9
Input Voltage	Standard electronic drivers are UL recognized and available for 110-277V or 110-347V * AC input voltage.

### LED System

CRI	Minimum 90 color rendering index
CCT	CCT selectable from 3000K, 3500K and 4000K with a great color consistency.
LED	Minimum 50,000h with 87.8% of lumen maintenance in 25°C ambient temperature, in compliance with IES LM-80 testing measurements.

### Approvals

- cULus listed
- Suitable for damp locations
- Designed for indoor use only
- 5 years limited warranty

### Optional Function

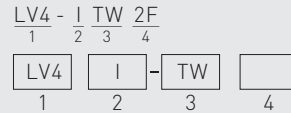
**Emergency Option** Optional high voltage 8W emergency LED driver EM-H08170-LBF can be provided. When AC power fails, it immediately switches to the emergency mode, operating for lighting up to 120 minutes. When AC power is restored, it automatically returns to the charging mode which meets critical life-safety lighting requirements. For more info or spec sheet, please visit our website or contact sales. Emergency Lumen Output:



FIXTURE EFFICACY	OUTPUT POWER 8W
100lm/w	800 Lumens

## PRODUCT ORDERING GUIDE

### Sample



#### 1. Base Model

LV4 Linear Vertical

#### 2. Driver

I Internal

#### 3. CCT

TW CCT Selectable: 3000K, 3500K, 4000K

#### 4. Length

2F 2 feet  3F 3 feet  4F 4 feet

## OPTIONAL ORDERING GUIDE

### Optional Function

- Wall Mount Accessory Set (Order Separated)
- LED Emergency Driver (Order Separated)

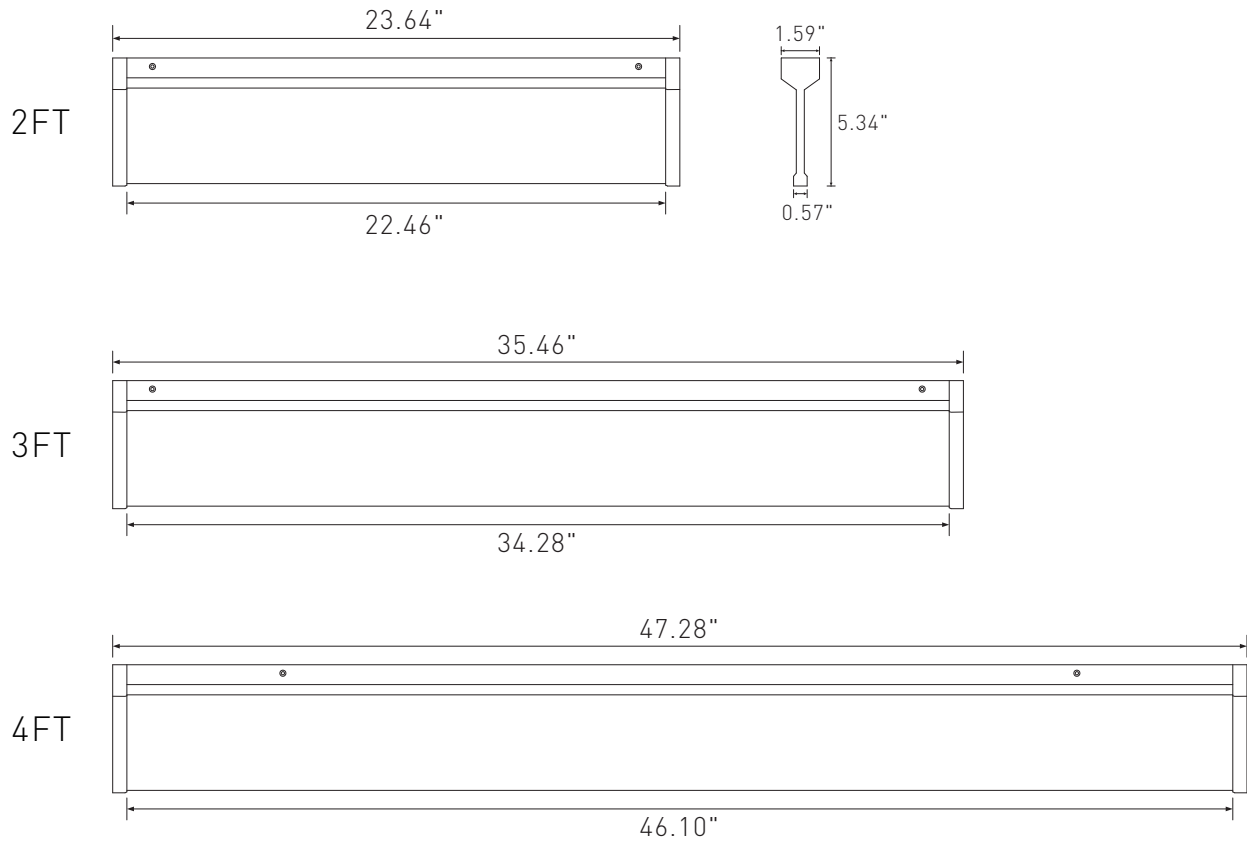
\*Additional cost and/or lead time on customized fixtures may apply. Some fixtures require an MOQ. Please contact your sales rep for more information.

# META Surface

Wall Mount | Vertical Architectural Linear



## DIMENSIONS

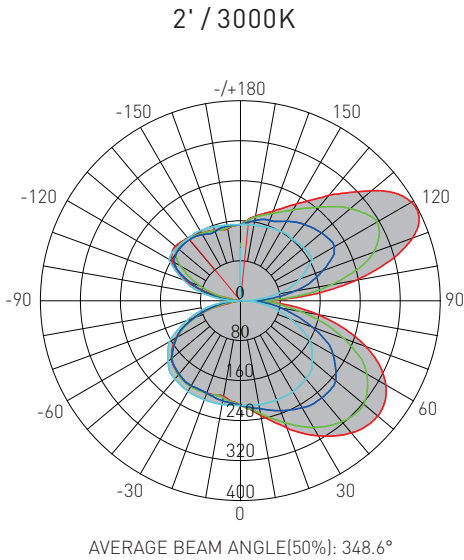


# META Surface

Wall Mount | Vertical Architectural Linear



## DISTRIBUTION DIAGRAM



Test Number: LV4-ITW2F-W  
 Lumens: 2024.88 Lm  
 Watts: 20 W  
 LPW: 102.00 Lm/W  
 CCT: 3000K

UNIT: cd  
 — C0/180,314.4°  
 — C30/210,360.0°  
 — C60/240,360.0°  
 — C90/270,360.0°

Zonal Flux Diagram

τ	C0	C45	C90	C135	C180
5	217.7	216.0	210.1	204.3	202.4
10	232.7	224.6	210.9	200.3	194.5
15	250.0	236.0	211.5	195.8	196.0
20	270.6	247.9	211.3	197.2	196.5
25	292.2	259.8	210.9	197.7	196.9
30	312.0	271.1	210.6	196.4	197.3
35	330.0	282.0	207.4	194.8	196.5
40	345.2	289.1	204.1	192.1	193.3
45	355.4	288.3	199.9	184.2	187.6
50	358.6	284.0	187.8	173.7	179.1
55	352.6	274.5	174.7	160.1	166.5
60	335.8	250.7	161.6	138.6	148.7
65	307.3	222.3	134.3	114.9	125.3
70	266.5	185.9	107.1	86.37	97.20
75	214.5	141.8	79.96	53.97	61.12
80	155.7	98.59	54.27	25.61	9.868
85	91.38	66.43	28.76	12.56	0.6312
90	45.57	33.95	3.242	0.6764	0.6350
95	142.6	88.68	36.97	18.81	0.5141
100	232.1	142.3	70.70	38.14	13.92
105	309.1	183.9	103.1	72.30	72.95
110	365.9	221.3	124.8	108.4	114.6
115	394.4	248.0	145.2	136.2	141.2
120	394.8	255.1	165.6	149.9	158.1
125	376.5	252.3	166.9	158.5	167.7
130	342.8	246.3	165.2	164.1	170.1
135	306.3	235.2	163.2	164.5	166.9
140	276.2	222.1	161.2	161.5	164.3
145	245.9	208.6	162.3	157.6	160.5
150	223.8	197.5	160.8	154.4	156.1
155	205.4	187.9	159.0	152.3	153.4
160	191.2	180.1	157.2	149.0	150.6
165	180.5	173.8	154.8	148.4	147.6
170	171.8	167.5	154.0	150.9	147.5
175	162.2	159.3	153.4	152.1	151.1
180	152.9	152.9	152.9	152.9	152.4
DEG	LUMINOUS INTENSITY:cd				

Zonal Lumens

τ	φ total
0-5	5.011
5-10	20.12
10-15	45.54
15-20	81.73
20-25	128.9
25-30	187.3
30-35	256.4
35-40	335.6
40-45	423.6
45-50	518.1
50-55	615.6
55-60	712.3
60-65	803.6
65-70	883.5
70-75	948.2
75-80	994.8
80-85	1024
85-90	1039
90-95	1057
95-100	1095
100-105	1155
105-110	1234
110-115	1326
115-120	1425
120-125	1523
125-130	1615
130-135	1698
135-140	1770
140-145	1833
145-150	1886
150-155	1929
155-160	1964
160-165	1991
165-170	2010
170-175	2021
175-180	2025
	UNIT: lm

Luminance cd/(m2)

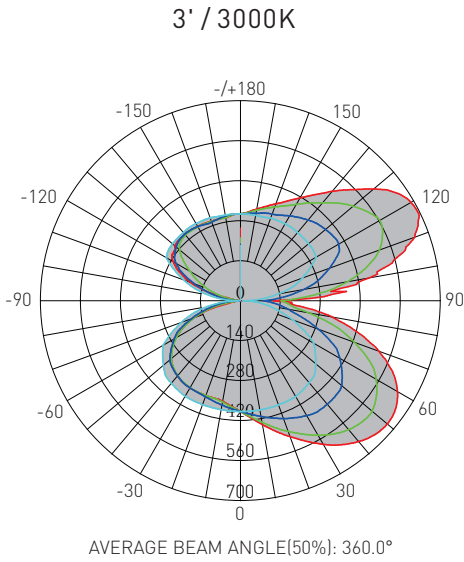
G(DEG)	C0/180	C90/270
85	9197	2894
80	7864	2741
75	7270	2710
70	6835	2746
65	6379	2789
60	5890	2836
55	5393	2672
50	4894	2563
45	4409	2480

# META Surface

Wall Mount | Vertical Architectural Linear



## DISTRIBUTION DIAGRAM



Test Number: LV4-ITW3F-W  
 Lumens: 3767.94 Lm  
 Watts: 40 W  
 LPW: 94.10 Lm/W  
 CCT: 3000K

UNIT: cd  
 — C0/180,360.0°  
 — C30/210,360.0°  
 — C60/240,360.0°  
 — C90/270,360.0°

Zonal Flux Diagram

τ	C0	C45	C90	C135	C180
5	411.0	403.8	388.3	376.1	371.4
10	440.2	422.6	388.6	365.9	357.9
15	472.8	443.9	388.9	357.8	353.4
20	506.4	465.4	388.6	354.4	353.5
25	542.7	486.0	388.3	353.1	353.8
30	580.9	504.8	388.0	351.4	352.5
35	615.7	523.2	381.4	348.4	350.3
40	644.1	537.5	374.7	342.2	343.5
45	663.9	538.0	366.3	326.3	332.7
50	671.5	531.1	344.2	302.6	316.3
55	662.7	514.3	320.3	269.5	293.6
60	634.5	473.0	296.4	224.1	260.2
65	587.6	423.2	244.5	180.6	220.4
70	515.0	358.2	192.5	135.1	170.6
75	422.1	278.7	141.3	85.71	96.27
80	325.3	203.1	96.55	41.82	22.15
85	194.4	159.5	52.57	20.91	1.140
90	114.8	115.5	8.580	1.376	1.206
95	373.0	208.2	69.72	39.59	1.159
100	453.9	299.0	130.9	79.65	19.39
105	557.7	362.6	189.7	137.7	111.9
110	648.8	418.1	230.3	197.8	183.0
115	689.9	454.7	268.5	247.1	233.5
120	688.9	464.3	306.8	274.5	271.1
125	661.7	458.7	310.7	292.9	288.2
130	609.1	448.6	311.3	306.4	299.7
135	550.3	429.6	311.5	309.4	303.3
140	500.1	408.2	311.7	307.9	304.5
145	452.6	386.4	313.1	304.7	302.6
150	415.9	368.3	311.7	301.1	300.2
155	384.5	352.0	310.1	298.6	299.0
160	361.1	337.7	308.4	296.5	296.9
165	341.9	327.2	304.2	295.8	296.3
170	325.9	317.2	304.0	299.3	295.8
175	311.6	308.6	304.3	303.9	302.5
180	304.6	304.6	304.6	304.6	304.3
DEG	LUMINOUS INTENSITY:cd				

Zonal Lumens

τ	φ total
0-5	9.298
5-10	37.33
10-15	84.46
15-20	151.2
20-25	238.1
25-30	345.2
30-35	472.2
35-40	617.6
40-45	779.1
45-50	952.6
50-55	1132
55-60	1309
60-65	1478
65-70	1627
70-75	1751
75-80	1843
80-85	1904
85-90	1941
90-95	1986
95-100	2064
100-105	2176
105-110	2318
110-115	2481
115-120	2656
120-125	2830
125-130	2996
130-135	3147
135-140	3282
140-145	3400
145-150	3499
150-155	3583
155-160	3650
160-165	3702
165-170	3739
170-175	3761
175-180	3768
	UNIT: lm

Luminance cd/(m2)

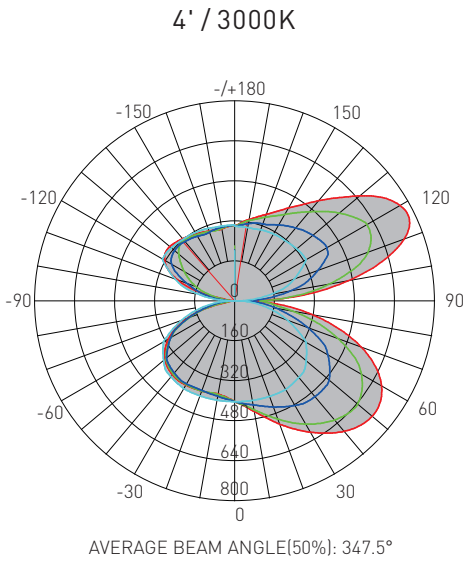
G(DEG)	C0/180	C90/270
85	12854	3466
80	10768	3196
75	9373	3138
70	8654	3235
65	7990	3324
60	7294	3407
55	6640	3209
50	6004	3077
45	5396	2977

# META Surface

Wall Mount | Vertical Architectural Linear



## DISTRIBUTION DIAGRAM



Test Number: LV4-ITW4F-W  
 Lumens: 3998.88 Lm  
 Watts: 40 W  
 LPW: 101.97 Lm/W  
 CCT: 3000K

UNIT: cd  
 — C0/180,310.0°  
 — C30/210,360.0°  
 — C60/240,360.0°  
 — C90/270,360.0°

Zonal Flux Diagram

τ	C0	C45	C90	C135	C180
5	421.1	416.2	404.3	392.2	386.9
10	449.6	433.0	405.2	384.6	379.1
15	484.8	455.3	406.2	380.5	381.5
20	524.8	479.7	407.4	381.8	384.7
25	565.8	504.9	408.6	384.6	387.2
30	607.1	529.2	409.8	384.9	389.9
35	646.8	550.7	405.2	384.0	391.0
40	681.7	567.7	400.6	380.3	387.2
45	707.2	570.1	394.2	357.9	378.6
50	718.6	565.2	373.9	323.1	636.9
55	710.5	549.4	351.9	278.9	340.4
60	679.0	504.6	329.9	232.7	306.4
65	621.8	449.7	276.7	190.2	258.6
70	537.8	376.4	223.4	145.3	199.8
75	432.0	286.1	169.9	94.78	121.0
80	313.2	197.8	114.0	48.83	26.01
85	184.8	135.4	57.90	24.31	1.100
90	83.95	72.86	1.758	1.317	1.154
95	278.3	185.4	72.42	40.67	0.9966
100	459.2	295.5	143.1	82.41	36.41
105	612.2	376.6	210.6	150.1	166.1
110	721.3	448.5	252.8	220.1	241.1
115	771.7	493.0	291.8	274.6	293.7
120	764.3	498.4	330.9	300.4	324.2
125	721.8	488.3	328.8	314.7	338.0
130	654.3	473.1	324.3	323.8	339.4
135	583.8	447.9	319.5	321.0	332.5
140	523.6	422.7	314.8	314.4	325.5
145	470.3	397.9	312.9	306.6	316.6
150	429.0	377.7	309.9	299.8	309.3
155	394.3	359.0	306.7	294.8	303.2
160	368.5	343.2	303.5	289.1	297.9
165	347.6	331.7	298.9	287.9	293.0
170	330.6	321.7	298.4	292.2	293.0
175	314.6	308.8	298.4	295.8	299.3
180	298.5	298.5	298.5	298.5	303.4
DEG	LUMINOUS INTENSITY:cd				

Zonal Lumens

τ	φ total
0-5	9.649
5-10	38.72
10-15	87.76
15-20	157.7
20-25	249.2
25-30	362.6
30-35	497.7
35-40	653.2
40-45	826.6
45-50	1013
50-55	1206
55-60	1397
60-65	1578
65-70	1738
70-75	1868
75-80	1962
80-85	2021
85-90	2050
90-95	2087
95-100	2167
100-105	2291
105-110	2452
110-115	2636
115-120	2831
120-125	3023
125-130	3201
130-135	3362
135-140	3504
140-145	3625
145-150	3728
150-155	3813
155-160	3881
160-165	3933
165-170	3970
170-175	3992
175-180	3999
	UNIT: lm

Luminance cd/(m2)

G(DEG)	C0/180	C90/270
85	9060	2839
80	7709	2807
75	7132	2805
70	6720	2792
65	6288	2798
60	5803	2820
55	5294	2622
50	4778	2486
45	4274	2382