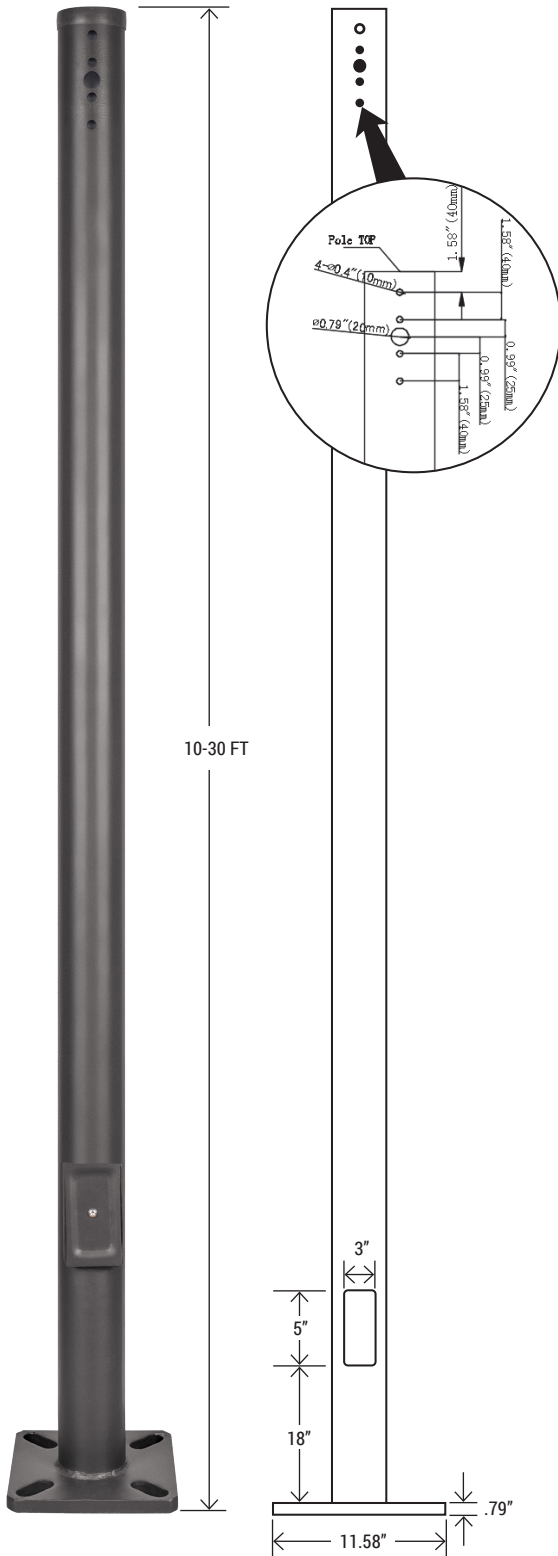


STRAIGHT ROUND STEEL POLES



The Lapa Industries Straight Round Steel poles are built from high strength steel tube and are available side drilled for arm mounted area lighting luminaires or with tenon mounts for flood and post top luminaires. Typical area lighting applications include retail centers, industrial parks, schools and universities, public transit and airports, office buildings and medical facilities. Mounting heights of 10 to 30 feet can be used based on selected luminaire applications.

FEATURES

FINISH:

Textured architectural bronze powder-coat finish, baked to ensure maximum paint adhesion, hardness and durability.

ANCHOR BOLTS:

Anchor bolts are not included, sized based on pole data charts for the selected pole size.

HAND HOLE:

Cast iron reinforced hand hole and cover with ground screw.

BASE COVER:

Poles are provided with a two-piece formed steel base cover that is easily assembled and fitted over pole base.

POLE LENGTH:

Poles are available in standard lengths as shown in the order matrix. Poles can be custom cut to order. Consult factory.

SPECIFICATIONS: Conforms to ASTM-A 500 Grade B: Minimum Yield Strength of 46,000 PSI.

SPECIFICATION	10FT	15FT	20FT	25FT	30FT
LP-R10FT3-11G-D					
LP-R15FT4-11G-D					
LP-R20FT4-11G-D	L = 3.0 (m)	L = 4.6 (m)	L = 6.1 (m)	L = 7.6 (m)	L = 9.1 (m)
LP-R25FT4-11G-D					
LP-R30FT5-11G-D					

MOUNTING OPTIONS



SIDE MOUNT: Standard length poles are predrilled (2@180°), with a polycarbonate top cover and hole plugs for unused predrilled locations.

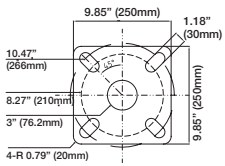
Note: When using Arm or Slip-Fitter Mounts, additional installation parts may be required to ensure proper installation. (example: Round Bar Adapter with Arm Mount or Horizontal Tenon Arc Adapter with Slip-Fitter Mount) see: *additional installation parts for more options*

TOP MOUNT: Round Pole Tenon Adapters (optional) can be installed for a use with a Slip-Fitter or Multi-Fixture installation requiring Bullhorns, Spokes etc. (3"RND, 4"RND and 5"RND to 2 3/8" Round Tenon Adapters available)

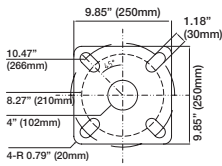
DIMENSION

STRAIGHT ROUND STEEL POLES

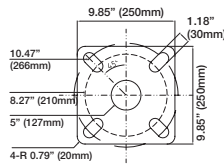
3" Flange



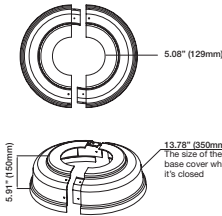
4" Flange



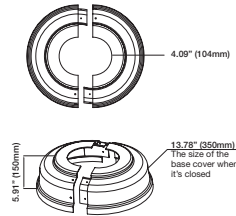
5" Flange



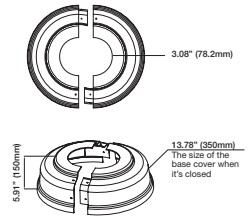
3" Flange Base Cover Size



4" Flange Base Cover Size

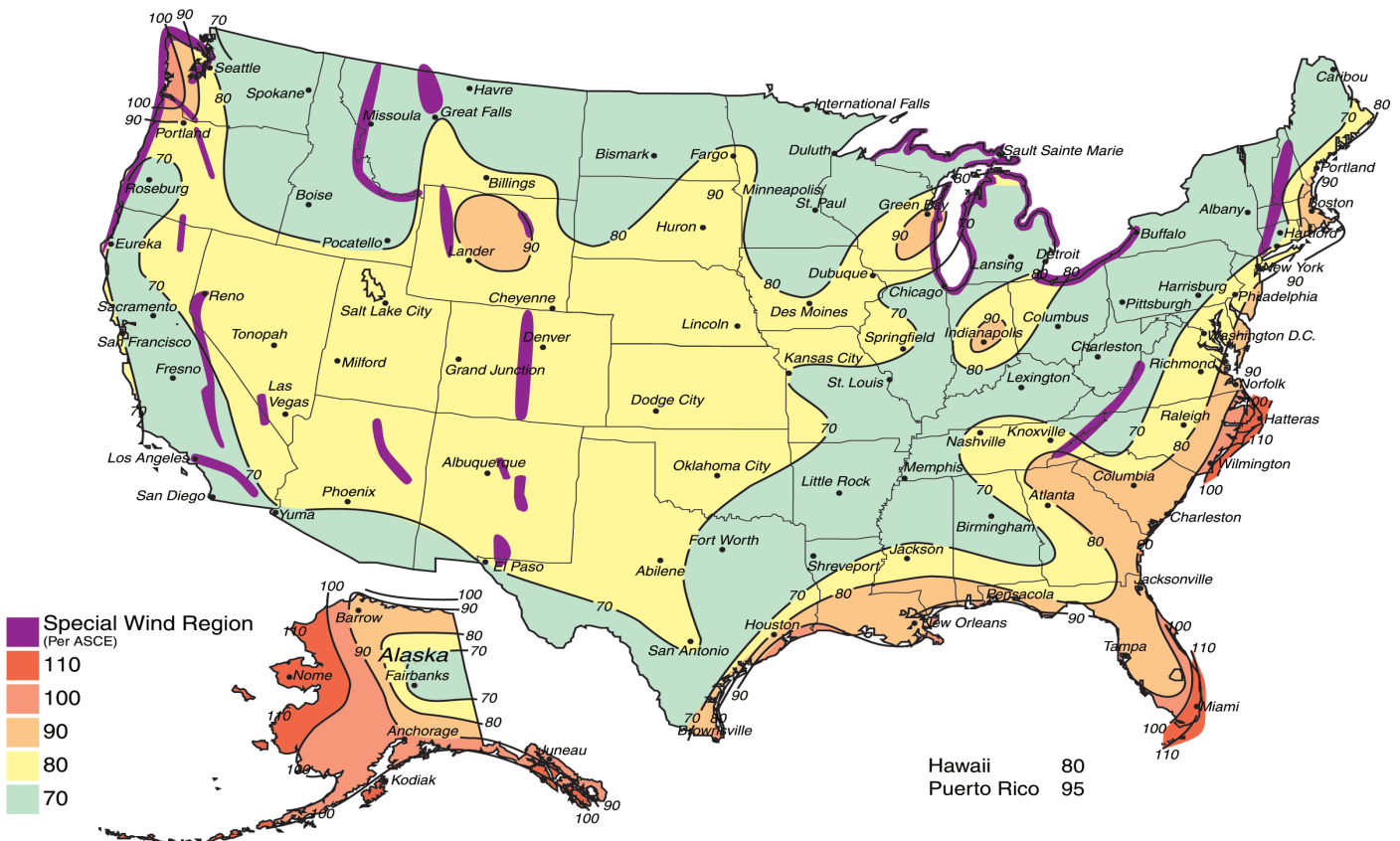


5" Flange Base Cover Size



DIMENSION DATA

CATALOG	HEIGHT	GAUGE	SIZE	BOLT SIZE	WEIGHT (LBS)	EPA 70	EPA 80	EPA 90	EPA 100	EPA 110	EPA 120
LP-R10FT3-11G-D	10ft	11	3" dia.	M0.75"X 19.69"X 3.94"	46	28.2	23.5	20.1	11.4	13.3	11.6
LP-R15FT4-11G-D	15ft		90		18.2	15.5	13.1	11.5	9.9	7.4	
LP-R20FT4-11G-D	20ft		4" dia.		117	12.2	10.3	9	7.2	6	4.6
LP-R25FT4-11G-D	25ft		139		11.9	8.9	7.7	6.1	5.6	4.2	
LP-R30FT5-11G-D	30ft		5" dia.		180	9.2	7.4	6.1	5.8	4.8	3.2

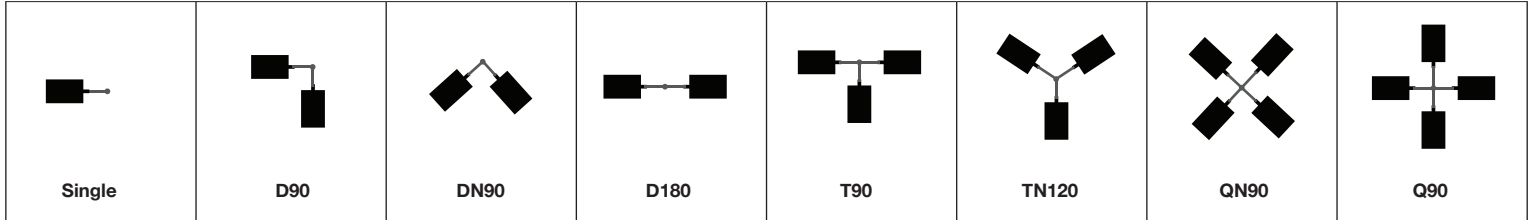


ORDERING INFORMATION

EXAMPLE: LP-R10FT3-11G-D

LP	R	10FT	3	11G	D
COMPANY	MOUNTING	HEIGHT	SIZE	THICKNESS	FINISH
LAPA INDUSTRIES	R - (Round Steel Pole)	10FT - (3.0 M) 15FT - (4.6 M) 20FT - (6.1 M) 25FT - (7.6 M) 30FT - (9.1 M)	3 - (3" diameter) 4 - (4" diameter) 5 - (5" diameter)	11G - (11 gauge)	D - (Dark Bronze)

FIXTURE CONFIGURATIONS



INSTALLATION

1. Dig a hole in the installation position of the lamp pole. Fixed four fastener fittings according to the hole position of lamp pole and poured with cement concrete. (as shown in the figure)

ANCHORAGE GUIDE

9.85" (250mm)
6.89" (175mm)
9.85" (250mm)
6.89" (175mm)

Set Screws

3"X5" HAND HOLE COVER

Pole
Waterproof gasket
Hand hole cover

Flange base cover
Nut

BASE PLATE

3.15" BOLT PROJECTION

Base cover (4PCS)

The screw to adjust water level

CONCRETE

2. Install 4 screws onto the stick and adjust to same water level, then place the square plate and screw tightly. Install the cover at the bottom of pole. (as shown in the figure)

Foundation reference specification

Specifications	L	W	H
10-15FT	19.69"(500mm)	19.69"(500mm)	23.62"(600mm)
20-25FT	23.62"(600mm)	23.62"(600mm)	27.56"(700mm)
30FT	27.56"(700mm)	27.56"(700mm)	39.37"(1000mm)

LAPAINDUSTRIES

MOUNTING OPTIONS:

	<p>Finish: Dark Bronze</p> <p>Arm Mount 4" and 5" Square and Round poles. Standard versatile mounting arm is simple to install and can be used with existing poles for retro installations.</p>		<p>Finish: Dark Bronze</p> <p>Slipfitter Mount An optional cast aluminum mast arm adapter secures fixture head to nominal 2"(2-3/8"O.D. pipe size) horizontal steel tenon arm.</p>
	<p>Finish: Dark Bronze</p> <p>Easy to install for direct wall mounting with 1/2" conduit wiring.</p>		<p>Finish: Dark Bronze</p> <p>SFARM2 Mount An optional cast aluminum mast arm adapter secures fixture head to nominal 2"(2-3/8"O.D. pipe size) horizontal steel tenon arm.</p>
	<p>Install Base Shield</p> <p>Finish: Dark Bronze</p> <p>The 3" Installation of base shield is used to protect the base after fixing the lamp pole, so that the lamp pole base is not damaged, thereby increasing the service life of the lamp pole.</p>		<p>Install Base Shield</p> <p>Finish: Dark Bronze</p> <p>The 4" Installation of base shield is used to protect the base after fixing the lamp pole, so that the lamp pole base is not damaged, thereby increasing the service life of the lamp pole.</p>
	<p>Install Base Shield</p> <p>Finish: Dark Bronze</p> <p>The 5" Installation of base shield is used to protect the base after fixing the lamp pole, so that the lamp pole base is not damaged, thereby increasing the service life of the lamp pole.</p>		<p>Screw Positioning Plate</p> <p>This is a screw rod positioning plate. After the screw rod of the lamp rod base is fixed underground, the positioning plate is fixed with the screw rod to prevent the screw rod from deviation. Finally, the lamp rod is locked.</p>
	<p>Arm Square Tube Turn Tube Tenon Adapter</p> <p>Finish: Dark Bronze</p> <p>Round tube light bar installation, with Arm installation of lamps.</p>		<p>Arm Square Tube Turn Tube Tenon Adapter</p> <p>Finish: Dark Bronze</p> <p>Round tube light bar installation, with Arm installation of lamps.</p>
	<p>Base Mounting Screw</p> <p>Finish: Silver</p> <p>Before installing the lamp pole, the installation hook should be buried underground and fixed by cement After fixing, the lamp pole should be fixed by locking screw and base installed.</p>	<p>LIGHT POLE TOP</p>	