

LED STREET LIGHT



PRODUCT FEATURES:

- ❖ Optical design, greatly improved the light utilization and evenness
- ❖ High efficiency LED Driver, the wide range input voltage AC120-277V ;
- ❖ Cast Aluminum design, better cooling, light quality, LED Tj < 85°C.
- ❖ Photocell Control & Motion Sensor (Optional)

MODEL #	
PROJECT:	
NOTES:	
DATE:	
PREPARED BY:	

Additional Information:

- Power: 150W
- Input: AC 120-277V
- CCT : 5000K
- Output: 21750 LM
- Light Source: LUMILEDS
- Driver: SOSEN POWER

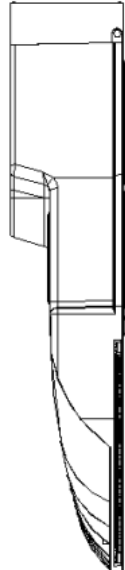
Structure Features:

- Shell Material: Alloy & PC
- Color: SILVER
- Weight: 9.9 lbs.

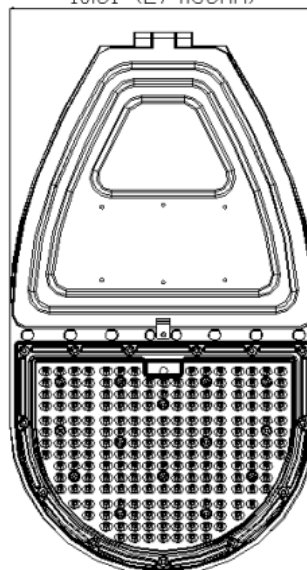
PRODUCT APPLICATIONS:

The 1000LED SHOEBOX LED Lighting Series can be widely used for Parking Lots, Pedestrian Walkways, Roadways, Industrial Areas, Schools, Sidewalks, Stadiums, Arenas and much more.

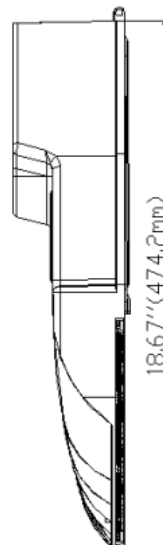
3.94" (100mm)



10.81" (274.58mm)



18.67" (474.2mm)

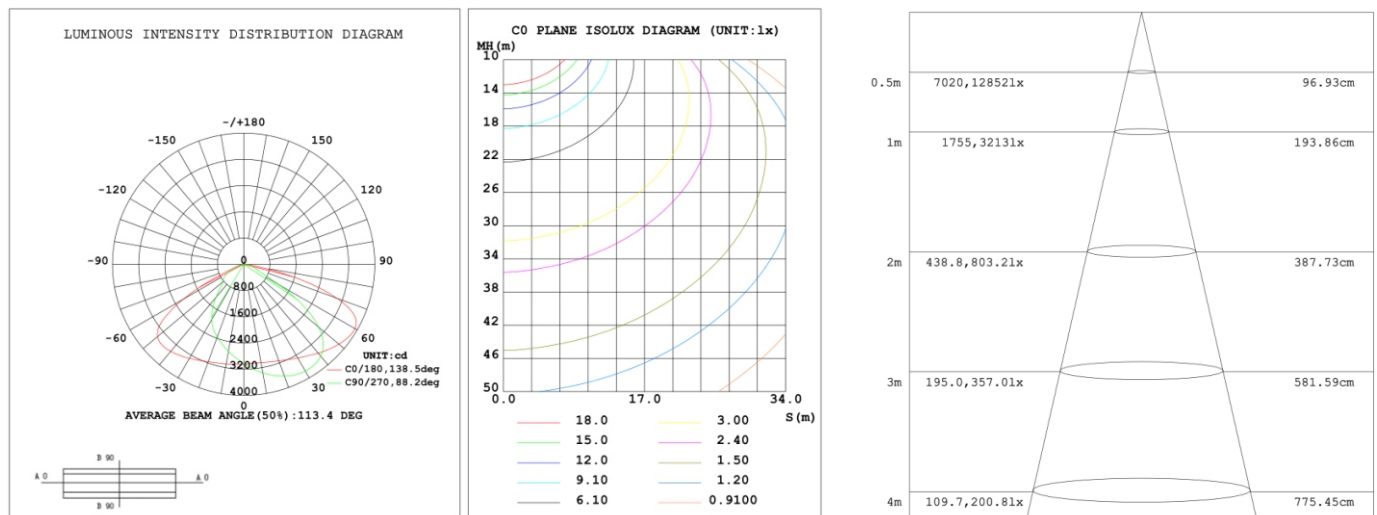


LED STREET LIGHT

TECHNICAL PARAMETERS:

Type	1L-ST15W27-XXK-S - [S , W]		
Power	150W	Lighting Angle	85*140°
Input Voltage	AC100-277V/200-480V	LED Brightness Decay	<5%/6000 hrs
PF	>0.95	Working Life	>50000 hrs
Driver Efficiency	>90%	Working Temperature	-30 - +45°C
Luminous Flux	21750 Lm	Storage Temperature	-40 -+80°C
Color Temperature	3000K/4000K/5000K/5700K/6500K	Protection Level	Wet Location/IP65
CRI	Ra>70	Cable	Input Connect (0.6m)

IRRADIATION AREA: Photometry



LED STREET LIGHT

ORDERING INFORMATION:

EXAMPLE: 1L-ST 15W 27-XXK-S-[S,W]

1L	SB	15W	27	XXK	ADP	M	P
Company	Product	Power	Voltage	ColorTemp	ADAPTER	Control	Control
1000LED	ST Street Light	10W (100W) 15W (150W)	27 AC100-277V 48 AC200-480V	30K (3000K) 40K (4000K) 50K (5000K) 57K (5700K) 65K (6500K)	ST-ADP2.5-3	M Motion Sensor	P 100-277V Photocell

While "XX" may be any digits represented color temperature;
 "Z" may be W (White) or S (Silver) represented color,
 "Y" may be "P" or blank represented type of photoelectric Switches
 "10V" be dimming 1-10V Control
 "M" be Motion Sensor Control.

PRODUCT CERTIFICATIONS:

