

LED SHOEBOX LIGHT



PRODUCT FEATURES:

- ❖ Optical design, greatly improved the light utilization and evenness
- ❖ High efficiency LED Driver, input voltage AC120-277V or AC277-480V;
- ❖ Cast Aluminum design, better cooling, light quality, LED Tj < 85°C.
- ❖ Photocell Control & Motion Sensor (Optional)

MODEL #	
PROJECT:	
NOTES:	
DATE:	
PREPARED BY:	

Additional Information:

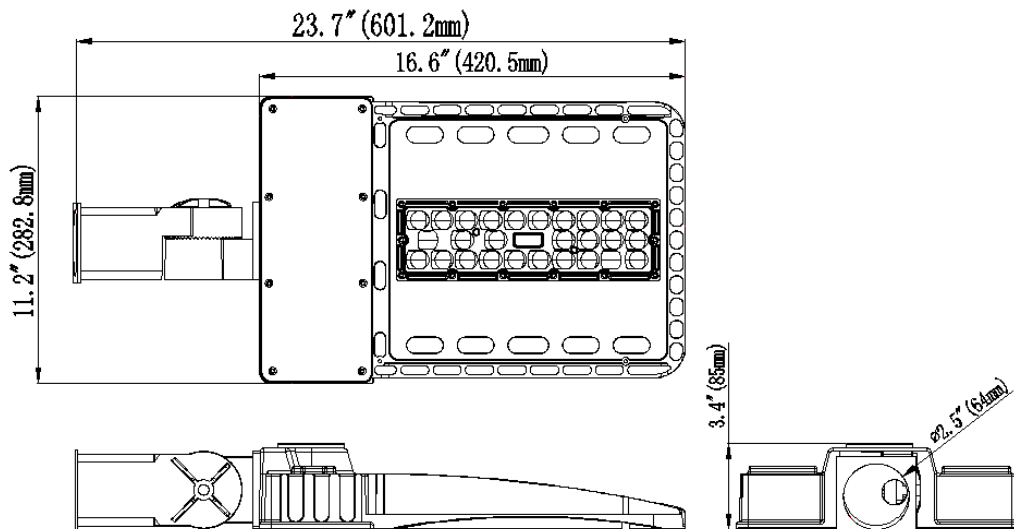
- Power: 100W
- Input: AC 120-277V
- CCT : 5000K
- Output: 13000 LM
- Light Source: LUMILEDS
- Driver: SOSEN POWER

Structure Features:

- Shell Material: Magnesium Alloy
- Color: DARK BRONZE
- Weight: 12 lbs.

PRODUCT APPLICATIONS:

The 1000LED SHOEBOX LED Lighting Series can be widely used for Parking Lots, Pedestrian Walkways, Roadways, Tennis Courts, Basketball Courts, Stadiums and Arenas

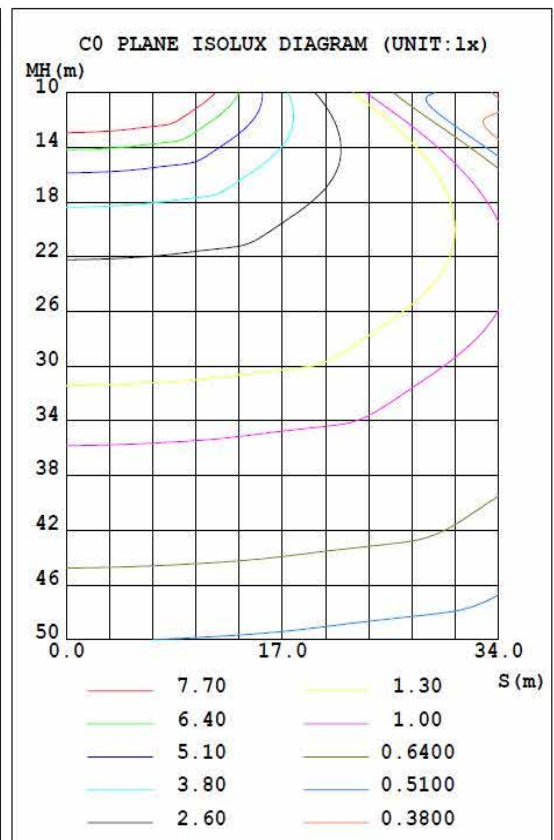
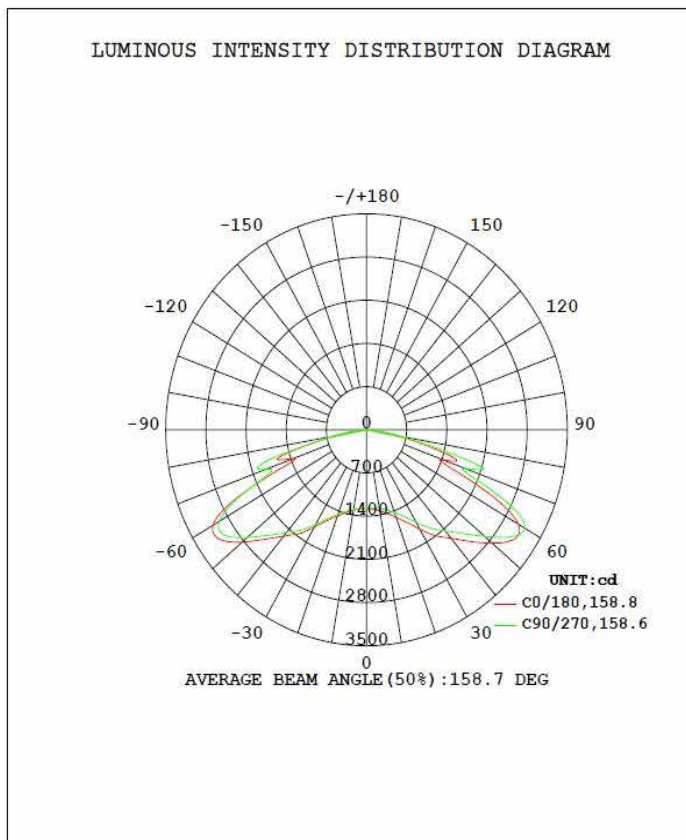


LED SHOEBOX LIGHT

TECHNICAL PARAMETERS:

Type	1L-UHB10W27-XXK-Z - T N - U - Y		
Power	100W	Lighting Angle	Type II, Type III, Type V
Input Voltage	AC120-277V	LED Brightness Decay	<5%/6000 hrs
PF	>0.95	Working Life	>50000 hrs
Driver Efficiency	>90%	Working Temperature	-30 - +45°C
Luminous Flux	13000 Lm	Storage Temperature	-40 --+80°C
Color Temperature	4000K/5000K/5700K	Protection Level	Wet Location/IP65
CRI	Ra>80	Cable	3 core, 18AWG (0.5m)

IRRADIATION AREA: Photometry & Type V



LED SHOEBOX LIGHT

ORDERING INFORMATION:

EXAMPLE: 1L-SB 10W 27-40K-D-T5-S-P

1L	SB	10W	27	40K	T5	S	P
Company	Product	Power	Voltage	ColorTemp	IES	Mount	Control
1000LED	SB	06W (60W)	27	40K (4000K)	T2	S	P
	Shoebox	10W (100W)	AC120-277V	50K (5000K)	Type II	Slip Fitter	120-277V Photocell
	Light	15W (150W)	48	57K (5700K)	T3	T	10V
		20W (200W)	AC277-480V	± 500K	Type III	Trunnion	Dimming 1-10V
		30W (300W)			T5	A	P
					Type V	Arm	120-277V

While "XX" may be any digits represented color temperature;
 "Z" may be D (Dark Bronze) or W (White) represented color,
 "N" can be 2, 3 or 5 represented type of lighting distribution;
 "U" can be S, A or T mounting.
 "Y" may be "P" or blank represented type of photoelectric Switches
 "10V" be dimming 1-10V Control
 "M" be Motion Sensor Control.

PRODUCT CERTIFICATIONS:

