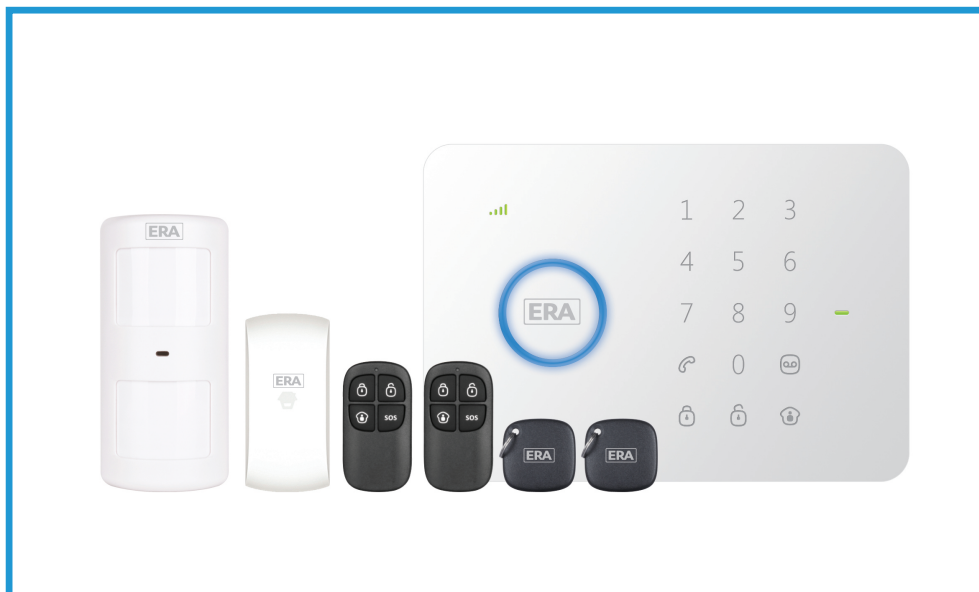


**Wireless Burglar Alarm  
Remote Monitoring/Communicating  
GSM/SMS/RFID/Touch Control**

**G5**

**Quick Start Guide**



**miGuard Customer Helpline**

**0345 257 1000**

lines open 0900 to 1700 Monday to Friday

## Congratulations on your purchase of the G5 Remote Monitoring/Communicating Burglar Alarm System

### IMPORTANT NOTES TO BE READ PRIOR TO SETTING UP YOUR SYSTEM

#### Control Unit SIM Card

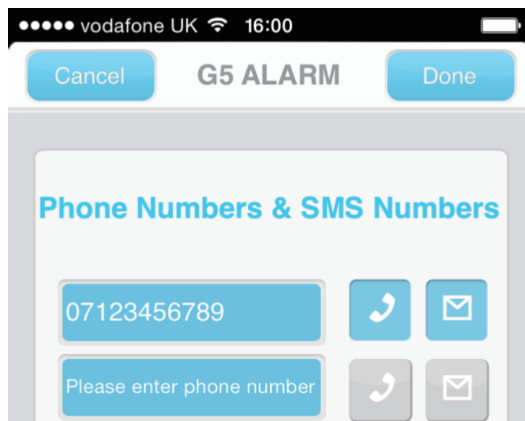
- Have available a mobile phone together with either a PAYG or Contract regular size SIM Card, on the network of your choice.  
*(SIM Card must work with 2G networks such as: Vodafone, O2, Orange, T-Mobile)*
- Know the SIM Card telephone number
- Ensure the SIM Card has available credit
- Turn off/disable the SIM Card's voicemail function and PIN request
- Download the G5 Alarm App  
*(available from Google Play or App Store)*

A SIM Card is required to program the Control Unit from your mobile phone (This may take up to 25 text inputs and a further 25 text replies).

Once programmed, the SIM Card can be removed from the Control Unit if the remote phone functions are not required. Please consider that most mobile tariffs include free texts or a generous monthly allowance (you will not need any data allowance).

#### G5 App Set-up: Phone & SMS Notifications

In order to receive phone and/or text notifications, ensure you select the 'Phone' and/or 'SMS' icon adjacent to each stored phone number. When selected the icons will change from grey to blue.



**FREE APP available:** search by keyword: G5 Alarm



#### KIT CONTENTS:

1 x Control Panel	2 x Brackets
1 x Pet Friendly PIR Motion Sensor	(1 x Wall Mounting, 1 x Desk Standing)
1 x Door/Window Sensor	1 x AC/DC Adapter
2 x Remote Controls	All Batteries and Fixings
2 x RFID Tags	Instruction Manual

#### Before Installation:

- Read the instructions thoroughly
- Remove all the contents from their packaging
- Consider the most appropriate positioning of the Control Panel and each Accessory.

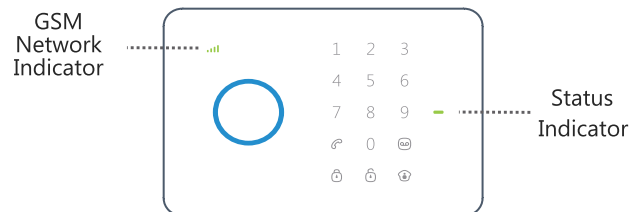
All the Accessories supplied in the G5 box are already pre-programmed to the Control Panel for ease of installation:

- The Magnetic Sensor is set to Zone 1 & 'Normal Mode'
- The PIR Sensor is set to Zone 2 & 'Home Mode'

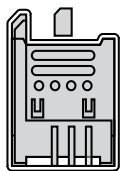
All Sensors are 'active' when the Control Panel is set to 'full arm'. Sensors set to 'home mode' will not be active when the Control Panel is set to 'part arm' (home mode).

Any additional Accessories will need to be programmed to the Control Panel, as shown in the G5 Instruction Manual.

#### I. Installing the Control Panel



- Carefully remove the battery cover at the back of the unit using a flat-bladed screwdriver.
- Plug the power jack into the unit and Power Supply/ plug into a suitable 13 amp socket.
- Insert a standard size SIM Card (with credit) into the SIM Card holder.
- Set the unit's 'ON/OFF' Switch to 'ON'.
- Refit the battery cover, ensuring the power supply cable sits within the channel and exits through the top of the battery compartment.
- The Network Connection indicator (LED) will flash once every second for a short period and will then flash every two seconds indicating that the GSM signal has been found. You can now register your mobile phone to the Control Panel.

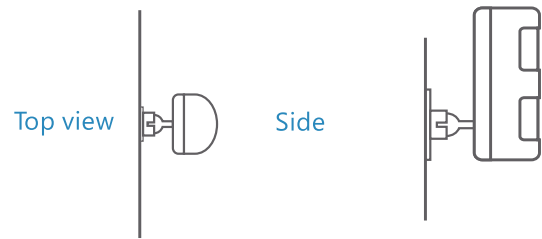
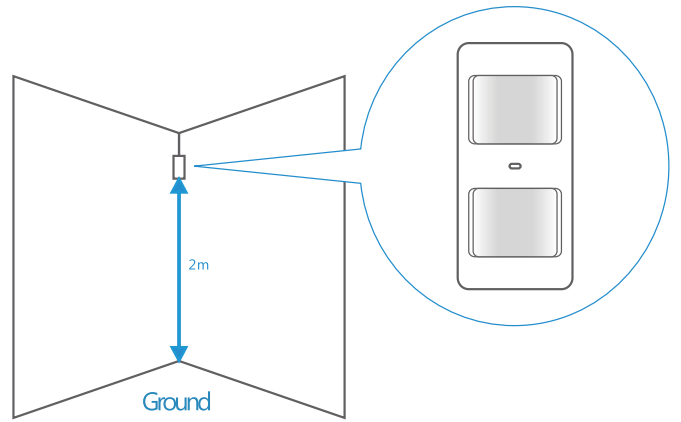
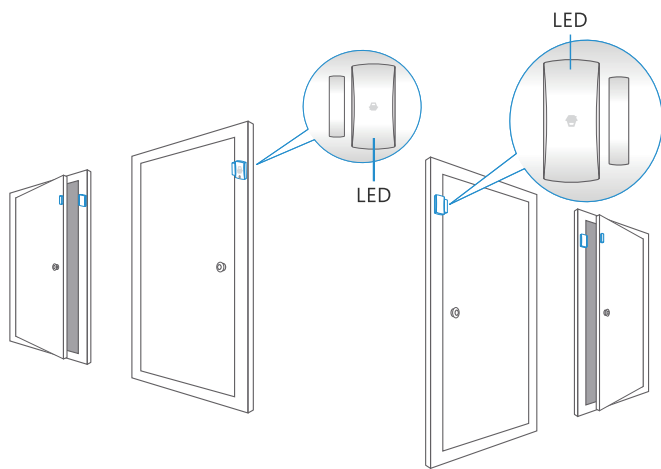


If the LED flashes every second (GSM signal not found) power down the Control Panel, remove the SIM Card and wait 30 seconds. Insert the SIM Card again and allow 1 minute for the signal to be found, indicated by a flash once every 2 seconds.

**Follow steps II to V overleaf to install/set-up the pre-programmed Accessories.**

## II. Installing a Door/Window Sensor

1. Remove the activation strip from the battery compartment.
2. Remove the backing paper from one side of each double-sided adhesive strips. Fix one adhesive strip to the back of the Magnet and one to the back of the Transmitter (alternatively for permanent fixing use the screws supplied).
3. Peel off the other side of each adhesive strip. Mount the Magnet on the door and the Transmitter on the door frame (small triangles facing each other), with less than a 6mm separation between the two.
4. When opening the door a small red indicator lights up briefly, this indicates that the Transmitter has sent a signal to the Control Panel.



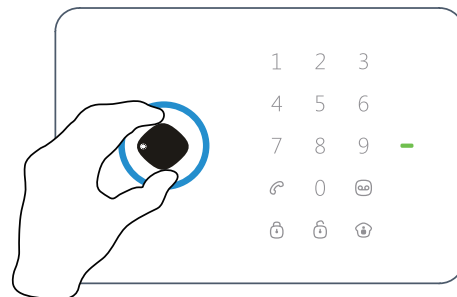
## IV. Remote Control Operation

1. Press the Arm Button on the Remote Control
2. The Control Panel will emit one beep to indicate that it is armed.
3. If your Control Panel is set to delay it will beep every two seconds for half of the duration of the delay, it will intensify in tempo for the remaining duration to warn that System Arming is imminent.



## V. RFID Tag Operation

To quickly disarm the system, simply hold the RFID Tag to the RFID Reader.



**Please refer to the System's full instruction manual for detailed programming.**

## III. Installing a PIR Motion Sensor

1. Remove the activation strip. Fit the retaining screw supplied.
2. Self-testing will commence for 1 minute, indicated by the LED flashing every two seconds. Once self-testing is complete press the Test Button, the LED will then flash once when movement is detected, for up to 3 minutes.
3. When you are happy with the performance of the Sensor, fit it in a position that will cover your desired protection area:
  - a. Fix the bracket to the wall with the fixings kit supplied. For optimum performance set the the height of the bracket to 2 metres above ground level.
  - b. Adjust angle of the PIR sensor to cover the required detection area (see diagrams \*\*).
4. To test, walk in front of the Sensor - the LED should illuminate once when movement is detected. If the Sensor is triggered twice in 3 minutes, it will enter into power saving (sleep mode). If no movement is detected within the next 3 minutes, the Sensor will

## GUARANTEE

The product is guaranteed for one year from the date of purchase against faulty materials and workmanship. No liability can be accepted for any problems caused by fair wear and tear, buyer's negligence, improper fitting or use, wilful or accidental damage, or any consequential loss or damage howsoever caused. This guarantee does not affect your statutory rights and is valid for UK and EIRE only.

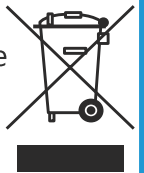
If you believe the product to be faulty or in the unlikely event of the product developing a fault during the warranty period, then please contact our Technical Support Team (contact details shown below) for product assistance. Product repair or replacement will be offered for faulty products only with our prior agreement. Should you need to return a product then:

1. Contact the Helpline on the number below to obtain a Return Authorisation Number
2. Return your product adequately packaged, ideally in its original packaging to prevent damage in transit, and include the following:
  - a. A copy of your original invoice/receipt
  - b. A covering letter giving your full contact details, including email address (if applicable)
  - c. A description of the fault or problem

## Disposal and Recycling

Disposal of this product is covered by the Waste Electrical or Electronic Equipment (WEEE) Directive. It should not be disposed of with other household or commercial waste.

At the end of its useful life the packaging and product should be disposed of via a suitable recycling centre. Please contact your local authority or the retailer from where the product was purchased for information on available facilities.



## miGuard Customer Helpline

**0345 257 1000**

**www.eramiguard.com**

### Response Electronics Limited

A Division of ERA Home Security  
Roman House, Lysons Avenue, Ash Vale, Surrey, GU12 5QF  
email: [info@responseelectronics.com](mailto:info@responseelectronics.com)