

ERA PROTECT

SERIOUS ABOUT SECURITY



Unique Camera
ID:

FLOODLIGHT CAMERA
QUICK START GUIDE

TABLE OF CONTENT

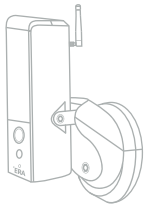
What's In The Box	3
ERA Floodlight Camera Overview	4
LED Status	5
Specifications	5
ERA Floodlight Camera Set Up	6
ERA Floodlight Camera Installation	8
Factory Reset	12
App Screens	13
Need Support?	14
ERA Protect Guarantee	15

SAFETY INFORMATION

- Do not try to disassemble the Camera.
- Keep the power supply dry.
- Small parts may cause a choking hazard, keep away from children.
- Only use approved ERA accessories and power supplies.
- Do not cover the ERA Protect Outdoor Camera Infrared Lights, they produce heat which may create a fire hazard.

WHAT'S IN THE BOX

Camera &
Wall Mount



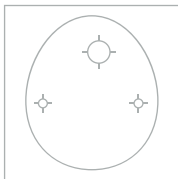
Wall Mount



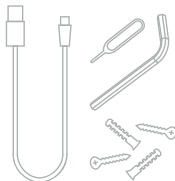
WiFi Antenna



Drilling Template



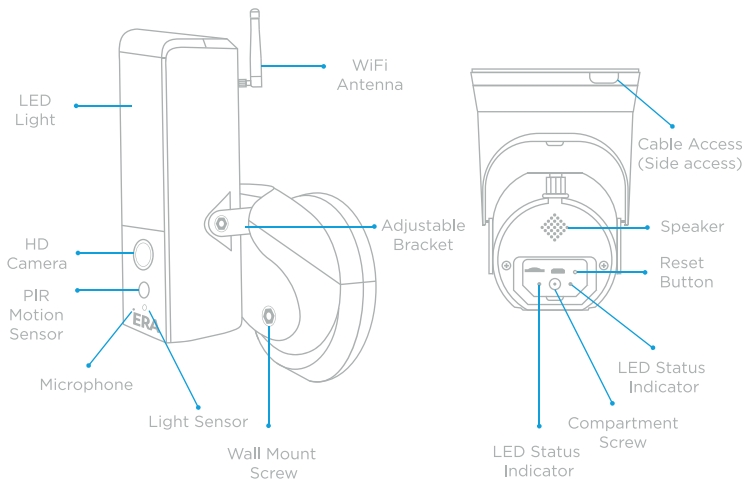
Fixing and
Configuration Kit



Quick Start
Guide



FLOODLIGHT CAMERA OVERVIEW



LED STATUS

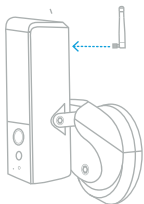
-  Both Red and Green Lights - Booting Up
-  Solid Green - Camera Connected To Server
-  Green Light Flashing - Camera Recording
-  Red Light Flashing - Camera Upgrading
-  Red Light Flashing - Camera Reset To Factory mode (when initiated from the ERA Protect App)
-  Floodlight On For Approx. 45 seconds - Camera Rebooting When On Power Supply

SPECIFICATIONS

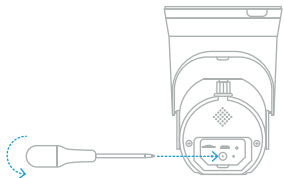
Power requirements:	100-240VAC
Weatherproof:	IP55 Rated waterproof and weatherproof
LED Output:	950 Lumens/3000K LED Lamp
Viewing Angle:	120° Horizontal
Image Quality:	H.264 High Profile, 1/2.8" CMOS
Sensor:	Full HD (1920*1080P)
Connectivity:	Wi-Fi 802.11 b/g/n 2.4GHz & Ethernet (WPA, WPA2-PSK)
PIR Detection:	100°
PIR Detection Range:	Up to 15m
Size:	Body, 70 (W) x 180 (H) x 65 (D)mm Bracket:95 (W) x 110 (H) x 110 (D)mm
Weight:	1kg

ERA FLOODLIGHT CAMERA SET UP

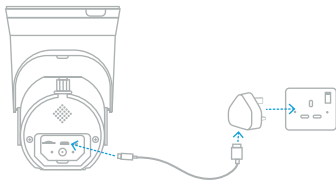
1. Attach WiFi Antenna (if using WiFi)



2. Unscrew the compartment located at the bottom of the Floodlight



3. Locate the USB-C cable provided and find a compatible plug to use for power and plug this into the USB-C slot on the Floodlight Camera. Connect the plug into a power socket and turn it on.



Note: Removal of the SD card will invalidate the warranty of this product - PLEASE DO NOT REMOVE!

4. Wait 1 minute for the Floodlight Camera to boot up and the the green light on the device will start flashing - your Floodlight is now ready to set up.
5. Download the ERA Protect app  on your smartphone (search for "ERA Protect" on Google Play or the iOS App Store) then follow the steps below.

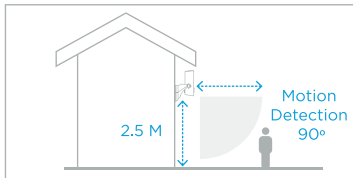
If you're having problems finding the app please scan the QR code below with your smartphone.



6. Select 'Sign Up' to create an account.
7. Once signed in for new and existing users, select 'Cameras' from the side bar menu. Then select the 'Add new' section on the app screen or press '+' in the top right corner.
8. Select the 'ERA Protect Floodlight Camera' from the device selection menu.
9. Follow the on screen instructions to complete ERA Protect Floodlight Camera set up.

ERA FLOODLIGHT CAMERA INSTALLATION

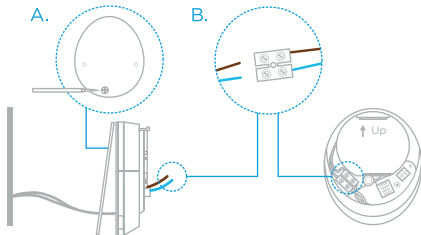
1. For optimal performance, please install the Floodlight Camera 2.5 metres above floor level.



2. Disconnect power at fuse or circuit breaker before proceeding to the installation.
3. The distance between the Floodlight Camera and the router should be maximum 150 metres to ensure the transmission range of the WiFi works at optimum levels.
Note: If this is not possible, you may need to consider a WiFi booster to improve the signal strength.
4. Using the drilling template, mark the wall for the location of the fixing screws and where the mains power will lead.
5. Using a drill, drill the marked holes for the wall mount to the surface where the Floodlight Camera will be located.

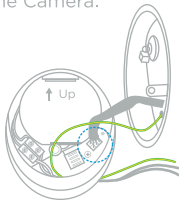
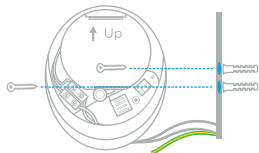
6. A. - Make a small hole in the rubber pad where the mains wire will be fed through into the wall mount.

B. - Lead the wires to the front of the base, screw the wires firmly to the terminal blocks. Put the terminal blocks back into the base properly to protect it against the any ingress.



7. Fasten the wall mount to the wall. Make sure that the UP sign is at the top.

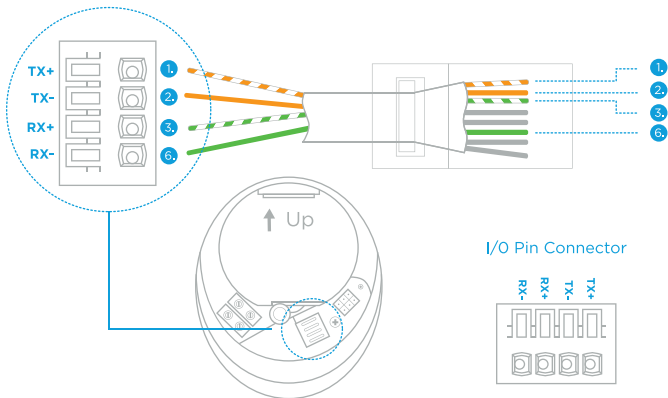
8. Connect the power cable to the wall mount. Connect the Earth cable from the mains wire to the Earth terminal on the Camera.



ETHERNET CONNECTION (OPTIONAL)

Note: If you are using WiFi please skip this step and go to step 9!

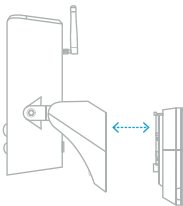
Follow the illustration below to connect the ethernet cable if not using the WiFi connection:



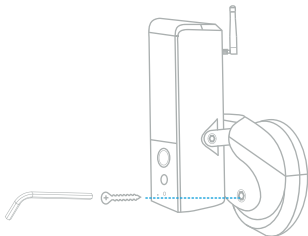
RX+ / RX- / TX+ / TX- : Ethernet Cable I/O*

*Ethernet cable is not included in the package.

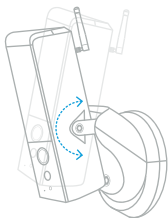
9. Place Floodlight Camera on the wall mount.



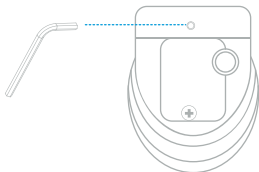
10. Fasten the bolt by using Hex key provided.



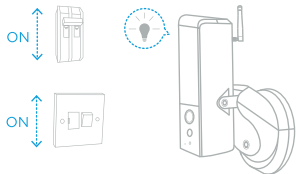
11. Adjust Floodlight by tilting the Camera up and down and adjusting the bolts on the side or the Camera bracket.



12. Loosen the screw on the back of the Camera bracket by using the allen key provided to adjust the pan angle. Screw firmly back up when the Camera is in position.



13. Once completed, turn the power on from the breaker or fuse and the Floodlight Camera will power up. Wait for 1 minute for Floodlight Camera to connect to internet.



FACTORY RESET

App:

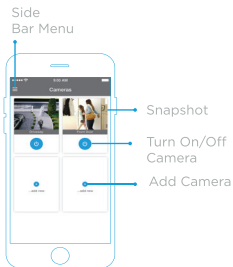
1. Select the hamburger menu on your ERA Protect app select settings and select the Camera you would like to factory default under the 'Camera Settings' section.
2. Once selected, scroll to the bottom of the camera settings and select 'Delete Camera'. Once you have confirmed that the Camera has been deleted from your account please proceed to the next steps below.

Camera:

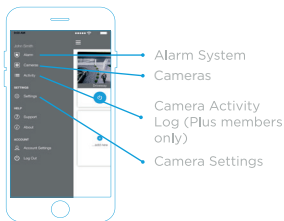
3. Remove the compartment from the bottom of the Floodlight Camera.
4. Using the reset pin provided, slot the reset pin into Floodlight Camera the reset button hole and press and hold the rest button for 5 seconds.
5. After 5 seconds the Red LED will flashing multiple times to indicate the rest process has been initiated.
6. Once the Red LED has gone back to solid state, please proceed to power cycle your product. Your product has now been reset back to factory default. Please follow the Camera set up process to install your Floodlight Camera.

APP SCREENS

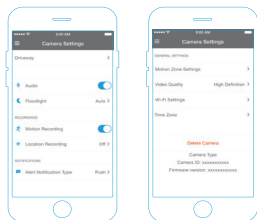
1.1 HOMESCREEN



1.2 SIDE BAR MENU



1.3 CAMERA SETTINGS



1.4 CAMERA ACTIVITY LOG



NEED SUPPORT?

Your ERA product is designed to be up and running in minutes. Please contact us for assistance or support. A more detailed installation and operation manual is available on our website.

Visit www.eraprotect.com
or phone us **0345 257 2500**



**ADD THE
ERA
PROTECT
PLUS**

WANT THESE GREAT FEATURES?

- 30 day rolling cloud storage for video recordings
- Access to 30 day activity log via the APP
- 24/7 connected camera status
- Push notifications when the Camera detects movement

ERA PRODUCT GUARANTEE

We at ERA firmly believe in the quality of our goods. Our technology achieves outstanding performance and durability and we can therefore offer, in addition to your statutory rights, an additional limited guarantee. In the event of any material defects in any product manufactured by us due to faulty design, materials and/or workmanship, and which arise following correct installation and during normal use in accordance with our instructions, as included in the product packaging, within the period of two years from the date of purchase, we will either repair, provide a replacement, substitute with equivalent product free of charge from our then current range or refund in full the amount paid for the product at point of purchase.

CONDITIONS

In order to take advantage of our guarantee, you must comply within the following conditions:-

1. This limited guarantee is not transferable and is extended only to, and is solely to the benefit of, the original purchaser of the product. Please retain your dated sales invoice as proof of purchase and forward this to us if you wish to make a claim under this guarantee.
2. Products must be installed, used and maintained in accordance with our instructions otherwise the guarantee will be invalidated.
3. The product must not be damaged or modified in any way nor must it have been subjected to any unauthorised repairs.

EXCLUSIONS

A full list of exclusions can be found within the full product guarantee, as detailed on our website www.eraprotect.com. This guarantee is in addition to your contractual and statutory rights and does not affect your statutory rights.

TO MAKE A CLAIM

Please contact Customer Support either by telephone on 0345 257 2500 or email support@eraprotect.com with full details of your claim, if your claim satisfies our Conditions and is not subject to any of our Exclusions, we will agree with you repair, replacement, substitution or refund of payment of goods. For full details of the claims process, please visit our website, *Terms and conditions apply.

RECYCLING AND DISPOSAL

Disposal of this product is covered by the Waste Electrical or Electronic Equipment (WEEE) Directive. It should not be disposed of with other household or commercial waste. At the end of the product's useful life, the packaging and product should be disposed of via a suitable recycling centre.

EC DECLARATION OF CONFORMITY

ERA hereby declare that this equipment complies with the essential requirements of the Radio and Telecommunications Terminal Equipment Directive 2014/53/EU. A copy of the EU Declaration of Conformity is available at www.eraprotect.com.

All devices, with the exception of the External Siren are suitable for mounting in dry interior locations only.
© ERA Home Security Limited. All rights reserved. All trade names are registered trademarks of respective manufacturers listed, App Store is a service mark of Apple Inc. Android and the "Google Play" logo are trademarks of Google Inc. Phone not included.



ERA Home Security Ltd
Valiant Way, Wolverhampton,
West Midlands, WV9 5GB

Customer Helpline: 0345 257 2500
www.eraprotect.com