

Mini Ceramic Indoor Fireplace

User Manual



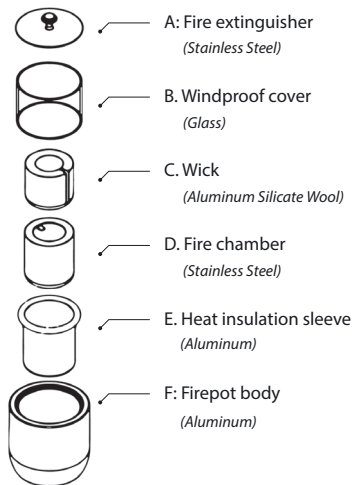
TABLE OF CONTENTS

Introduction & Part List	2
Set Up Indication	3-4
Safety Warning	5-6
Support	7

INTRODUCTION

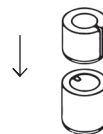
Thank you for choosing VESSILS® Mini Ceramic Indoor Fireplace.
Please read the manual carefully, and keep it for further reference.

PART LIST

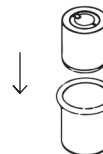


SET UP INDICATION

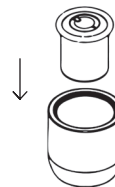
1. Put the wick(C) into the fire chamber(D). If solid fuel tablets are used, put them into the chamber directly without the wick, and skip step 4.



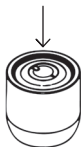
2. Put the fire chamber(D) into heat insulation sleeve(E).



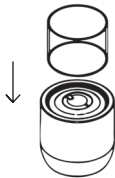
3. Put the heat insulation sleeve(E) into the firepot body(F).



4. Inject fuel onto the wick(C) averagely by proper volume.



5. Put the windproof cover(B) onto the firepot body(F) gently.



⚠ CAUTION

- Light the fire pot only with an extended lighter or long match to prevent your hand from fire burn.
- Cover the top of the windproof with the fire extinguisher quickly to put out the fire.

SAFETY WARNINGS

- These safety instructions must be kept and provided to anyone who uses the fireplace.
- This fireplace must be used strictly on horizontal and flat surface.
- ⚠ Use 70% or 91% isopropyl alcohol as fuel. Never fill the reservoir higher than 1 inch from the edge.
- ⚠ Flame follows fuel; spilled fuel should be cleaned with a dry paper towel or a rag before lighting.
- ⚠ Use only an extended lighter or long match to ignite. Never refill, move or touch the fire pit while burning or when it is still hot. Use cover to extinguish fire. Do not attempt to blow.
- ⚠ If lit fuel spills, suffocate to extinguish or spray with a fire extinguisher. The fire pit should never be activated, handled, or filled by minors. Never leave a burning fire pit unattended. Keep children and pets at a safe distance and under adult supervision. Keep flammable objects at least 3 feet away from fire pit while lit or hot.
- ⚠ Do not burn longer than 1.5 hours at a time without letting the fire pit cool to the touch.
- ⚠ Do not open fuel container next to open fire. Fuel should be stored in a dry, cool place at least 5 feet from fire pit. Always confirm bottles are tightly sealed, keep out of reach of children.

- ⚠ Do not leave unlit fuel in burn chamber. Flame can be snuffed out, but fuel must then be emptied.
- ⚠ Discontinue use and contact immediately for a replacement if cracks appear or fuel or flame show on the outside of the unit. Neither VESSILS LLC nor any retailer assumes liability for injuries or damages resulting from the use of the fire pit.

SUPPORT

For more information, please visit www.vessils.com

If you need any assistance or support, please email support@vessils.com with details. We will answer your email within 24 hours.