



V E S S I L S[®]

KAMADO GRILL CART

MY-SDT16 (grill not included)
Instruction Manual

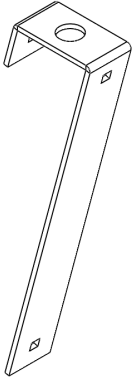


@vessils_offical

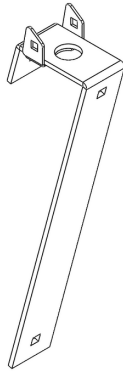
IMPORTANT

- Carefully remove any packaging materials before assembly
- Read these instructions and take note of all of the safety warnings carefully

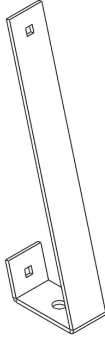
PARTS LIST



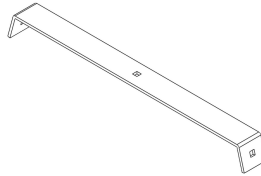
#1 (x2)



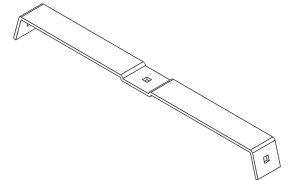
#2 (x2)



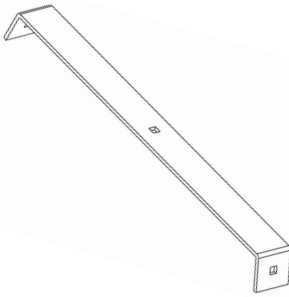
#3 (x4)



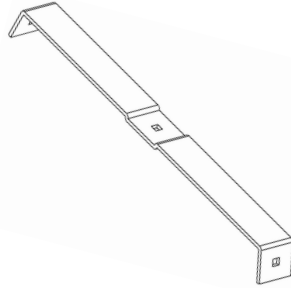
#4 (x1)



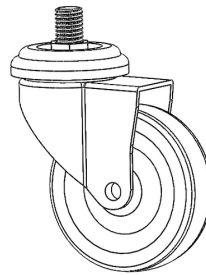
#5 (x1)



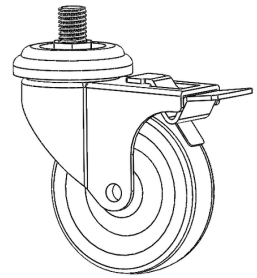
#6 (x1)



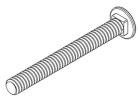
#7 (x1)



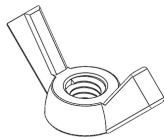
#8 (x2)



#9 (x2)



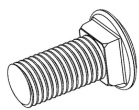
A (x2)



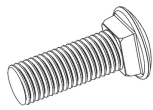
B (x2)



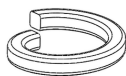
C (x14)



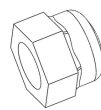
D (x10)



E (x4)



F (x4)



G (x4)



H (x4)



ASSEMBLY INSTRUCTIONS

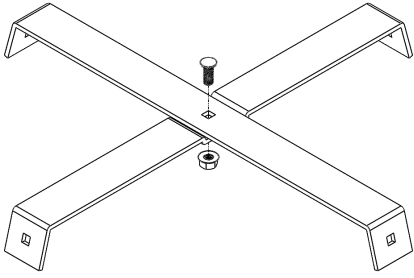
Prior to assembly, check all parts against the parts list. Carry out assembly on a soft surface to avoid scratching the paint. For ease of assembly, only loosely tighten bolts to put the pieces together and then tighten fully when assembly is complete.

WARNING

DO NOT over-tighten bolts. Only tighten all bolts with moderate pressure to avoid damaging the bolts or components of the Kamado Grill.

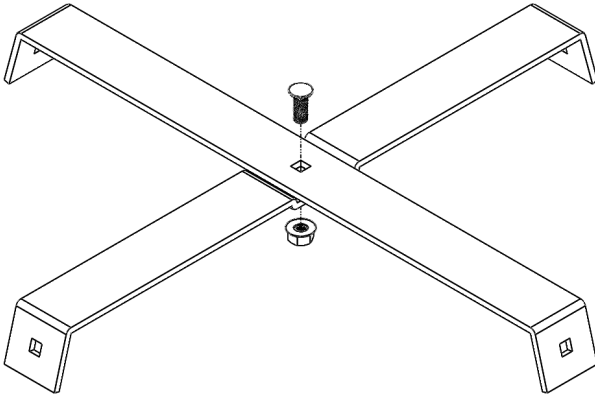
STEPS

①



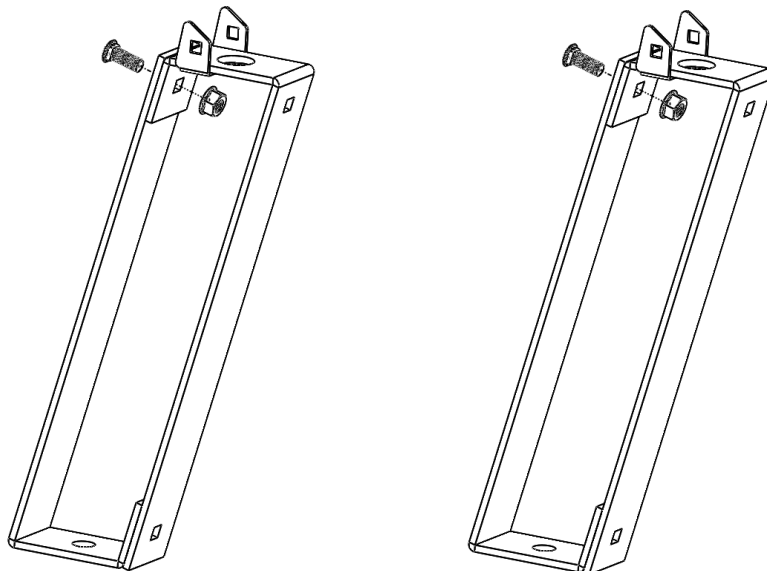
Connect parts #4 and #5 with C and D, get part I.

②



Connect parts #6 and #7 with C and D, get part II.

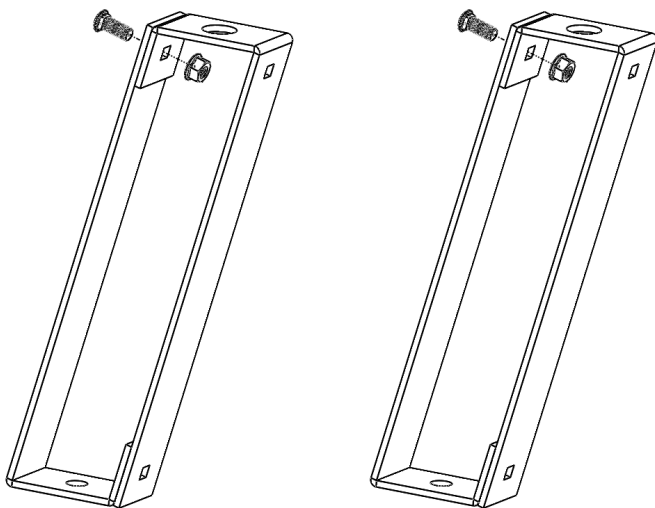
③



Connect parts #2 and #3 with C and D. Repeat for another set, get a pair of part III.

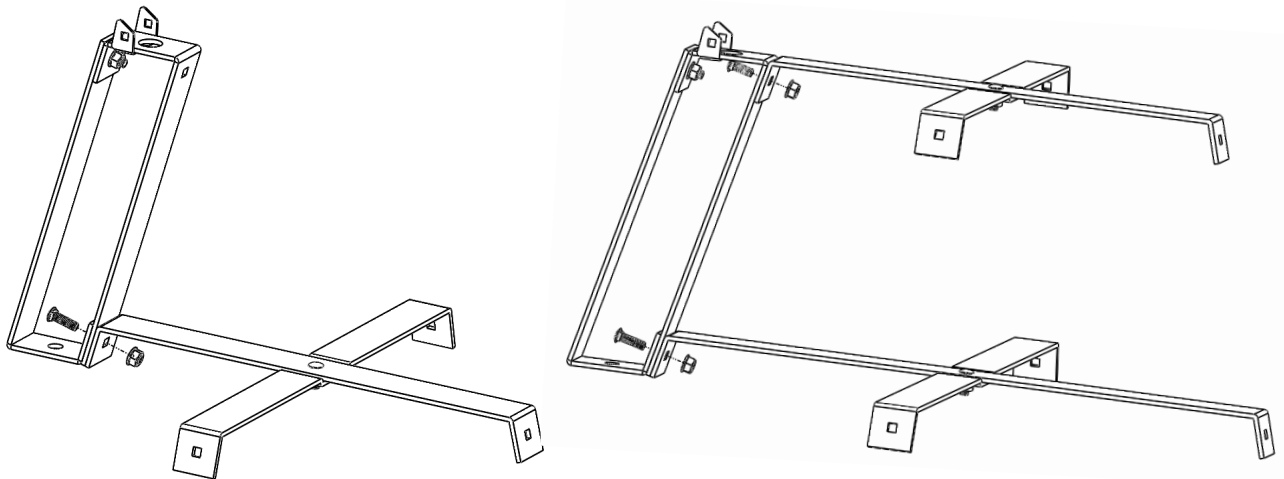
STEPS

④



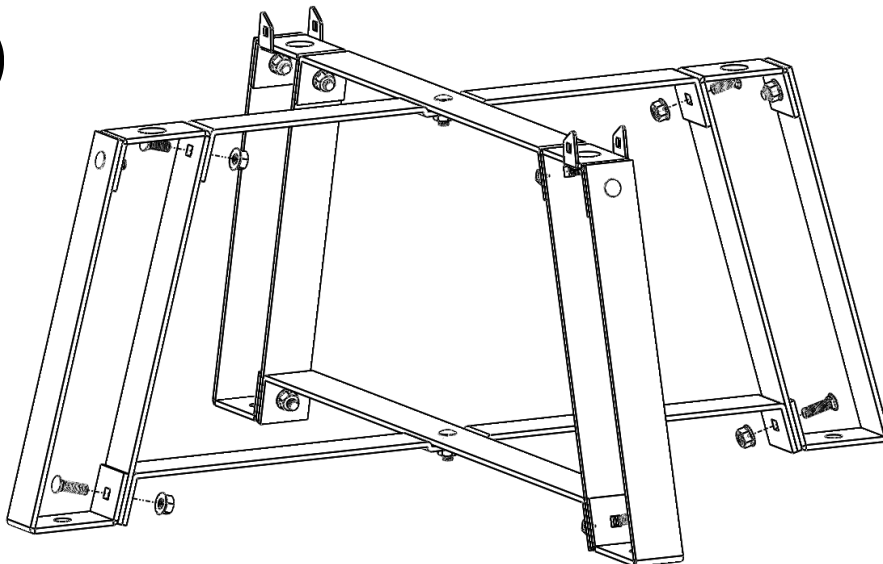
Connect parts #1 and #3 with C and D. Repeat for another set, get a pair of part IV.

⑤



Take 1 piece of part III, connect it to part I with C&D and connect it to part II with C&E. Repeat to attach the other part III.

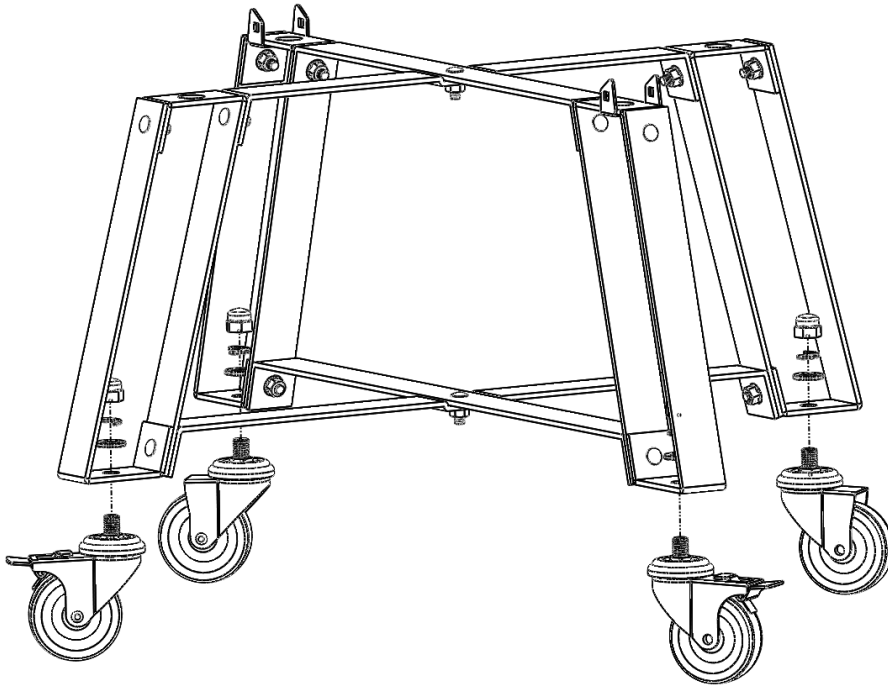
⑥



Repeat the above step 5 and attach the pair of part IV. Always use D for part I and E for part II

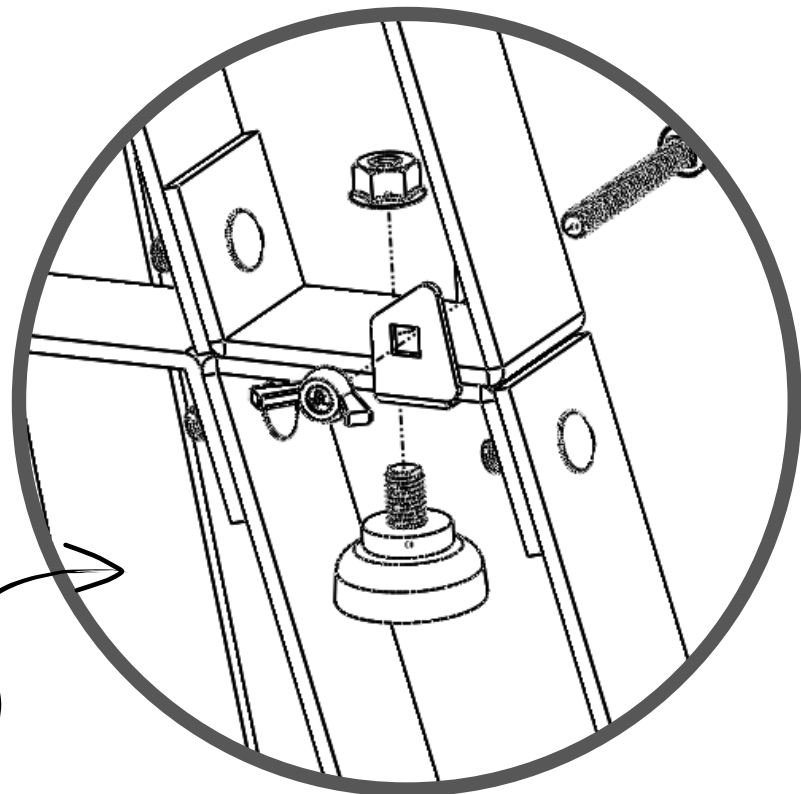
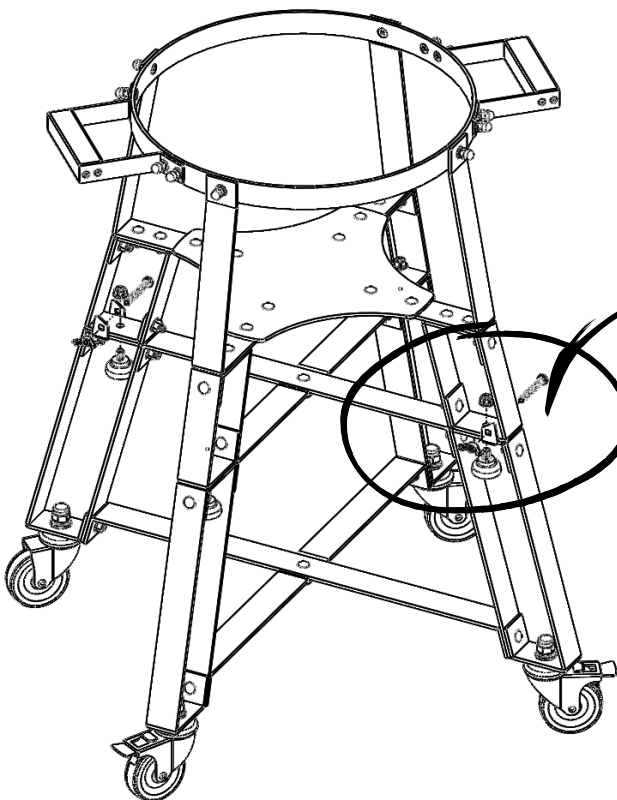
STEPS

7



Install the wheels (parts #8 and #9) with F, G and H

8



Remove the rubber base pads under the bracket. Attach the bracket to the cart. Install the rubber pads back and secure the connection with A and B



For more information, please visit www.vessils.com

If you need any assistance or support, please email support@vessils.com with details. We will answer your email within 24 hours.