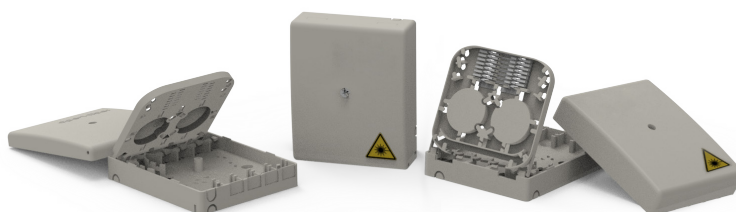


# optotec ODP UFO

## Universal Fiber Outlet



ODP UFO Universal Fiber Outlet wall socket by Optotec is a simple and versatile solution to the termination needs for the end user of fiber optic networks.

The clean lines make this product ideal for installation inside any home. Its compactness which stands out even more when you open it, discovering the many features it contains.

The input cable can be accessed from all sides (including from an E502 wall box), allowing it to be mounted both vertically and horizontally. It is possible to install up to 4 SC or 4 LC/duplex adapters and splice up to 12 fibers.

The shape has been designed to simplify installation operations as much as possible (the tray inside automatically remains in a raised position, the fiber passages are protected and guarantee a minimum radius of curvature compatible with the G657.A1 standard). It is possible to disperse up to 20m of bare fiber (to distinguish different customers with OTDRs) and also to install a reflector and a field installable connector.

Securing the cover to the base by means of a screw prevents from accidental openings.

Optotec can also supply special tear-resistant labels to ensure controlled access to the inside.

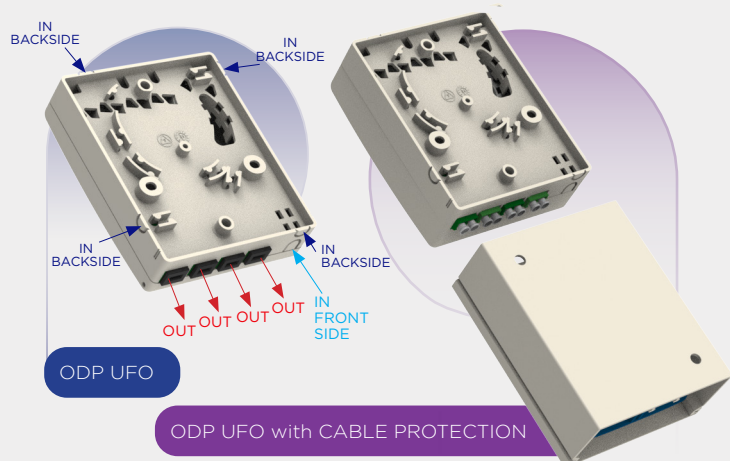
The Optotec wall outlet is therefore an innovative solution enclosed in a clean and essential design for user connection.

### APPLICATIONS

- Business and Residential  
Fibre To The Wall connectivity

### TECHNICAL FEATURES

- Ergonomic, small and compact design
- Easy installation
- Optional series:  
colours, custom kits and labels



DESCRIPTION		
PARAMETERS	UNIT	PERFORMANCE
Copper connector		0
Min bending radius	mm	15
Operating Temperature Range	°C	-20 to +50
Humidity Range	RH%	5 to 95
Flammability		UL94 HB
IP Protection Class		IP43
Dimensions ODP UFO	mm	30 x 90 x 110
Dimensions ODP UFO WITH CABLE PROTECTION	mm	ODP UFO: 40 x 90 x 110
	mm	CABLES PROTECTION: 40 x 90 x 110
Material		ABS Tech
Standard Colour		RAL 9010
Customized Colour		On Request
Max Fibre Splice capacity		12 (FiberTerm or FiberCrimp)
Splice tray		1
Cable entry (IN)		4 Rear side + 1 Front side
Connector capacity (OUT)		4 x SC/sx
		4 x LC/dx

# FTTH - BUILDING CABLING SYSTEM ORDERING INFORMATION



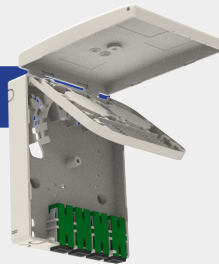
SERIE NAME	ITEM NAME
OPTO DOMUS PRODUCTS	UFO
	UFO WITH CABLE PROTECTION

ENVIRONMENTAL STANDARDS	
TESTS	SPECIFICATION
Structured cabling	EN 50173
Cabling customer premises	ISO/IEC 11801
Enclosures resistance	IEC 60529

## WALL OUTLET

### ODP - UFO

- Extra slim cover
- Easy access  
The input cable can be accessed from all sides (including from an E502 wall box)
- Easy mounting  
allows it to be mounted both vertically and horizontally.



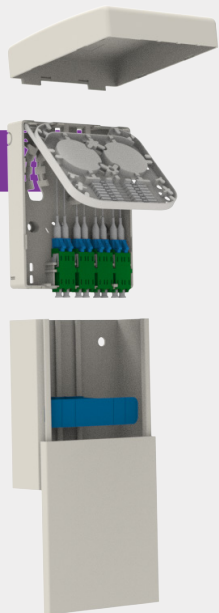
## WALL OUTLET AND PROTECTION

### ODP - UFO with CABLE PROTECTION

- Easy access  
The input cable can be accessed from all sides (including from an E502 wall box)
- Easy mounting  
allows it to be mounted both vertically and horizontally.

#### Cable Protection Main features:

- Non-Slip cover  
Exclusive flush cover design with maximum grip
- Built-in bottom rails  
Quick installation of the yellow Cable-retaining Cross-arm without the need for additional hardware means time and money savings.



## PACKAGING

PRODUCT NAME	PACKAGING TYPE	DIMENSIONS (mm)			GROSS WEIGHT (kg.)
		WIDTH	DEPTH	HEIGHT	
ODP-UFO	Plastic Bag	300	-	300	0,088
ODP-UFO WITH CABLE protection	Plastic Bag	300	-	300	0,2175

The information given herein, including drawings, illustrations and schematics are intended for illustration purposes only and is believed to be reliable. However, STL makes no warranties to its accuracy or completeness and disclaims any liability in connection with its use. STL obligations shall be only set forth in STL standard terms and conditions of the sale and in no case, STL be liable for any incidental, indirect or consequential damages arising out of sale, resale, use or misuse of the product. Users of STL products should make their own evaluation to determine the suitability of such each product for the specific application.