

optotec MSC AC

splice closure with MST trays

MSC AC watertight closure (IP68, IEC 529) was created for the management and the splicing of high capacity fiber optic cables.

Differently to the other Optotec's closure, it accommodates MST trays, up to max. 8.

MST trays are splice only and they have a maximum capacity of 96 f.o. joints, both heath shrinkable fiberterm splice protectors and mechanical fiberclip holders.

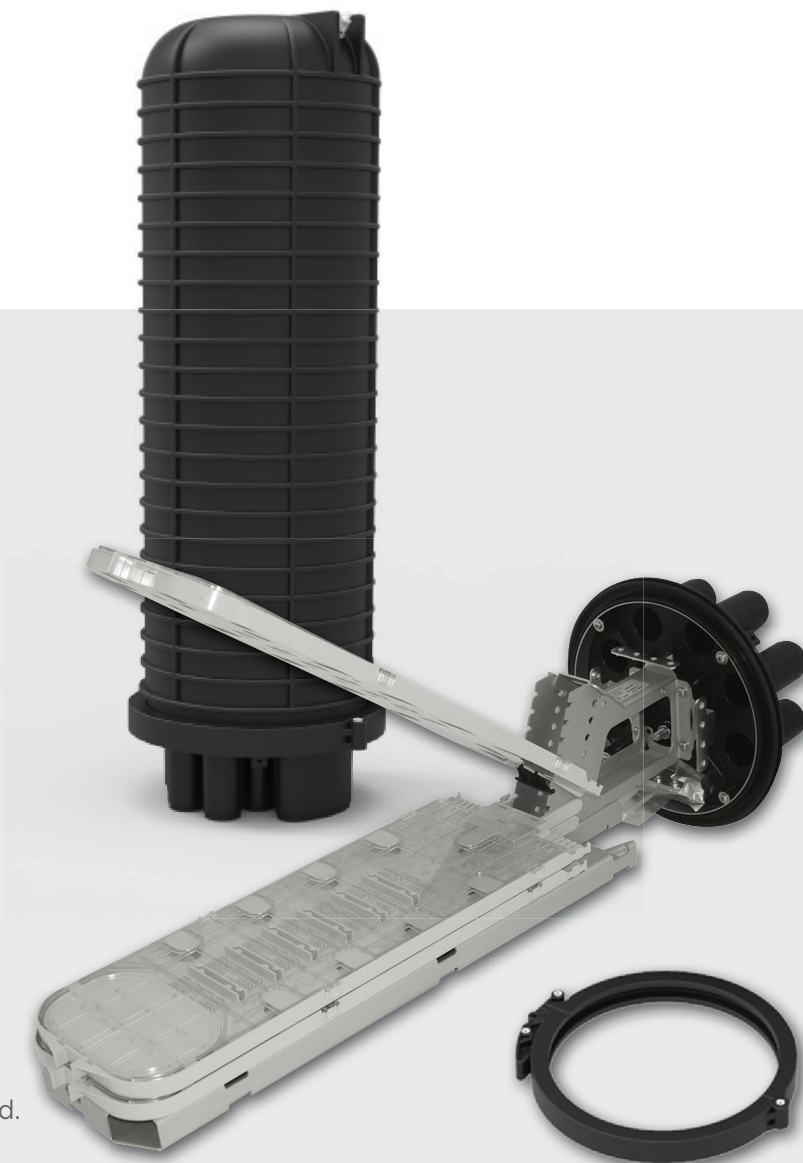
Tray is divided into 8 splice areas, 12 f.o. each. It is possible to use the top one area to allocate and protect a bare fiber PLC.

APPLICATION

- For in line closures, branch joints and pot-head.
- Aerial networks: on pole and on wall.
- Underground networks: inside handholes/manholes.

TECHNICAL FEATURES

- High quality thermoplastic material - watertight.
- BASE and DOME (IP68, IEC 529) with clamp and O-ring closing system.
- Easy access to the junction area through CLAMP opening equipped with a guided locking.
- Management Capability of various types of tube cables, slotted core and ribbon.
- BASE is suitable both the heath-shrinking sealingkit and cold sealing kit (BASE A).



ORDERING INFORMATION

PRODUCT LINE	SERIE NAME	BASE TYPE	DOME TYPE	MSCKIT MST (Mass Splice Tray) CONFIGURATION	CAPACITY N° OF TRAYS
Closures	MSC (Mass Splice Closures)	A	C	H1 1 splice tray for heathshrinkable fiberterm splice protections	up to 8
				C1 1 splice tray for mechanical fiberclip splice protections	

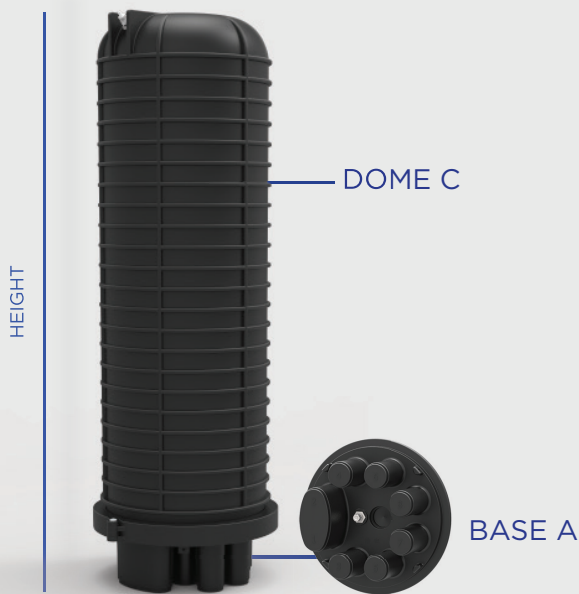
CLOSURES SPLICE CAPACITY

Closures splicing capacity depend to the number **MSCKIT MST** trays installed.
 All closures are useable to installed up to max 8 trays.
 MSC closures are standard delivered with 1 preinstalled tray.

COMPONENTS AND CONFIGURATIONS

MSC AC DIMENSIONS

Height 770 mm Ø 247 mm

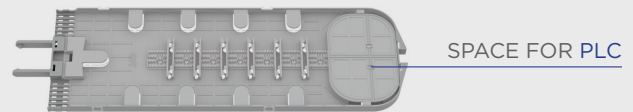


MSC AC C

ONLY SPLICE CLOSURES UP TO 96 FIBRES PER TRAY
MSCKIT-MST-C WHICH ACCOMMODATING MECHANICAL
 FIBRE CLIPS SPLICE PROTECTORS

MECHANICAL FIBERCLIP **C** ANT TYPE 

MSCKIT-MST-C

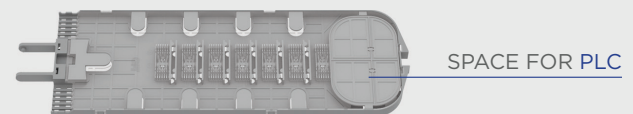


MSC AC H

ONLY SPLICE CLOSURES UP TO 96 FIBRES PER
 TRAY **MSCKIT-MST-H** WHICH ACCOMMODATING
 HEATSRINKABLE SPLICE PROTECTORS

HEATSRINKABLE **H** SMOUVE TYPE 

MSCKIT-MST-H



PACKAGING

PRODUCT NAME	PACKAGING TYPE	DIMENSIONS (MM)			GROSS WEIGHT (KG.)
		WIDTH	DEPTH	HEIGHT	
MSC-AC-H1	Carton Box	300	300	800	6
MSC-AC-C1	Carton Box	300	300	800	6
MSCKIT-MST-H	Carton Box	500	150	20	0,44
MSCKIT-MST-C	Carton Box	500	150	20	0,44

The information given herein, including drawings, illustrations and schematics are intended for illustration purposes only and is believed to be reliable. However, STL makes no warranties to its accuracy or completeness and disclaims any liability in connection with its use. STL obligations shall be only set forth in STL standard terms and conditions of the sale and in no case, STL be liable for any incidental, indirect or consequential damages arising out of sale, resale, use or misuse of the product.
 Users of STL products should make their own evaluation to determine the suitability of such each product for the specific application.