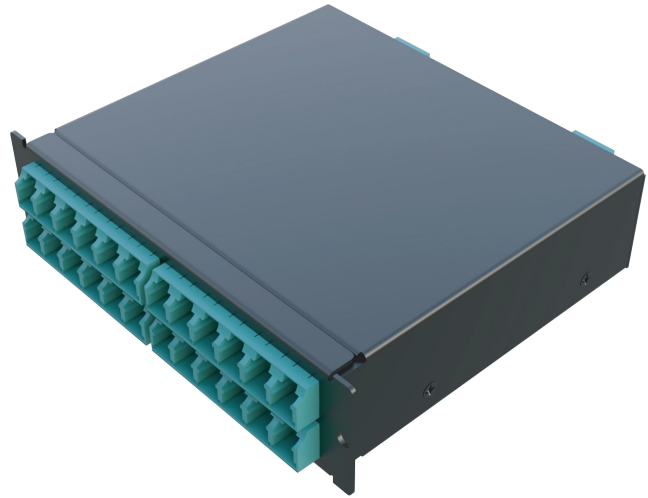


# 12/24F MPO to LC Cassette



STL MPO to LC modular cassette modules with the flat mounting panel are the best suited solution for the connectivity in the Enterprise network. Modular and light weight cassette made up of AL provide a reliable and low loss connectivity option to split the connections for 10/40/100G connections as needed. The modular and high-density arrangement helps in connecting 48 LC ports in 1RU space.

## Features & Benefits

- High precision MPO and LC connectors
- Bend insensitive fiber in both SM and MM version
- Offered in 12F and 24F in Type A, B & C wire maps
- Low loss optical performance

## Physical Characteristics

<b>Fibre Type</b>	SM - G657A1, MM - OM3/OM4
<b>Fibre Count</b>	12/24
<b>Adapter Colour</b>	SM - Blue   MMOM3/OM4 - Aqua
<b>Connector Interface Back</b>	MPO
<b>Connector Interface Front</b>	LC
<b>Cassette Colour</b>	Black

## Environmental Characteristics

ROHS compliant  
Halogen Free

### Optical Characteristics

Type/Parameter	Maximum Insertion Loss (IL)		Minimum Return Loss (RL)		Test Wavelength
	MPO	LC	MPO	LC	
MM OM3 / OM4	≤0.35dB	≤0.15dB	≤25dB	≤25dB	850/1300nm
SM G657A1	≤0.35dB	≤0.15dB	≤60dB	≤55dB	1310/1550nm

### Testing Standards

Insertion loss (IL) : IEC 61300-3-4  
 Return Loss (RL) : IEC 61300-3-6

### Part Number Configuration

1		2		3	4	5	6	7	8
Product Type		Connector Type End A		Ferrule Grade	Base	Connector Type End B	Fibre Type	Wire Map	Fibre Count
M	C	M		P	12	G	A1	B	12

<b>Product Type</b>	<b>Connector Type End A</b>	<b>Ferrule Grade</b>	<b>Base</b>	<b>Connector Type End B</b>	<b>Fibre Type</b>	<b>Wire Map</b>	<b>Fibre Count</b>																																						
<table border="1"> <tr><td>MC</td><td>MPO Cassette</td></tr> </table>	MC	MPO Cassette	<table border="1"> <tr><td>F</td><td>MPO Female</td></tr> <tr><td>M</td><td>MPO Male</td></tr> </table>	F	MPO Female	M	MPO Male	<table border="1"> <tr><td>P</td><td>Premium</td></tr> </table>	P	Premium	<table border="1"> <tr><td>8</td><td>8F</td></tr> <tr><td>12</td><td>12F</td></tr> <tr><td>16</td><td>16F</td></tr> <tr><td>24</td><td>24F</td></tr> </table>	8	8F	12	12F	16	16F	24	24F	<table border="1"> <tr><td>G</td><td>LC/UPC</td></tr> </table>	G	LC/UPC	<table border="1"> <tr><td>04</td><td>OM4</td></tr> <tr><td>A1</td><td>G657A1</td></tr> </table>	04	OM4	A1	G657A1	<table border="1"> <tr><td>A</td><td>Type A</td></tr> <tr><td>B</td><td>Type B</td></tr> <tr><td>C</td><td>Type C</td></tr> <tr><td>X</td><td>Custom</td></tr> </table>	A	Type A	B	Type B	C	Type C	X	Custom	<table border="1"> <tr><td>08</td><td>08 Fibre</td></tr> <tr><td>12</td><td>12 Fibre</td></tr> <tr><td>16</td><td>16 Fibre</td></tr> <tr><td>24</td><td>24 Fibre</td></tr> </table>	08	08 Fibre	12	12 Fibre	16	16 Fibre	24	24 Fibre
MC	MPO Cassette																																												
F	MPO Female																																												
M	MPO Male																																												
P	Premium																																												
8	8F																																												
12	12F																																												
16	16F																																												
24	24F																																												
G	LC/UPC																																												
04	OM4																																												
A1	G657A1																																												
A	Type A																																												
B	Type B																																												
C	Type C																																												
X	Custom																																												
08	08 Fibre																																												
12	12 Fibre																																												
16	16 Fibre																																												
24	24 Fibre																																												