

# SADP Software

## User Manual

UD.6L0202D1921A01

## Contents

Chapter 1 Introduction .....	1
1.1 Overview.....	1
1.2 System Requirements .....	1
1.3 Conventions.....	1
1.4 Version Information.....	1
Chapter 2 Operating SADP Software .....	2
2.1 Searching Active Devices Online.....	2
2.2 Activating the Device .....	3
2.3 Modifying the Network Parameters .....	4
2.4 Restoring and Resetting Password.....	6
2.4.1 Restoring the Default Password .....	6
2.4.2 Resetting the Password .....	8

# Chapter 1 Introduction

## 1.1 Overview

Search Active Devices Protocol software is user-friendly and installation-free online device search tool. It searches the active online devices within your subnet and displays the information of the devices. You can also modify the basic network information of the devices using this software.

## 1.2 System Requirements

**Operating System:**

Microsoft Windows 8 / Windows 8.1 / Windows 7 / Windows 2008 32 / 64-bit,  
Windows XP / Windows 2003 32-bit

**CPU:** Intel Pentium IV @ 3.0 GHz or above

**RAM:** 1G or above

**Video Card:** RADEON X700 Series

**Display:** 1024\*768 resolution or above

## 1.3 Conventions

In order to simplify the description, we define the “SADP software” as “software” in the following chapters.

## 1.4 Version Information

After installing the software, click  on the desktop to run the software.

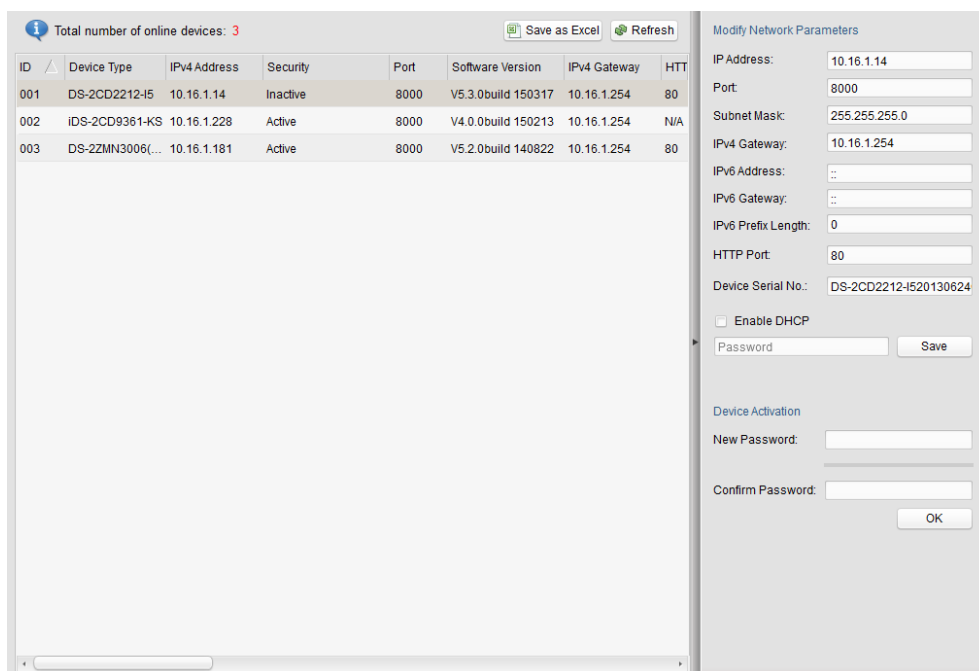
Click the **Help > About** tab at the top to view the version information or click **Help > User Manual** to get the User Manual of the software.

# Chapter 2 Operating SADP Software

## 2.1 Searching Active Devices Online

### Task1: Search Online Devices Automatically

After launching the SADP software, it automatically searches the online devices every 15 seconds from the subnet where your computer locates. It displays the total number and information of the searched devices in the **Online Devices** interface. Device information including the device type, IP address, port number, gateway, etc. will be displayed.



The screenshot shows the SADP software interface. At the top, it indicates 'Total number of online devices: 3'. Below this is a table with the following data:

ID	Device Type	IPv4 Address	Security	Port	Software Version	IPv4 Gateway	HTT
001	DS-2CD2212-I5	10.16.1.14	Inactive	8000	V5.3.0build 150317	10.16.1.254	80
002	iDS-2CD9361-KS	10.16.1.228	Active	8000	V4.0.0build 150213	10.16.1.254	N/A
003	DS-2ZMN3006(...	10.16.1.181	Active	8000	V5.2.0build 140822	10.16.1.254	80

To the right of the table is a 'Modify Network Parameters' panel with the following fields:

- IP Address: 10.16.1.14
- Port: 8000
- Subnet Mask: 255.255.255.0
- IPv4 Gateway: 10.16.1.254
- IPv6 Address: ::
- IPv6 Gateway: ::
- IPv6 Prefix Length: 0
- HTTP Port: 80
- Device Serial No.: DS-2CD2212-I520130624
- Enable DHCP
- Password: [input field] Save
- Device Activation section with New Password and Confirm Password fields, and an OK button.



Device can be searched and displayed in the list in 15 seconds after it goes online; it will be removed from the list in 45 seconds after it went offline.

### Task2: Search Online Devices Manually

You can also click **Refresh** to refresh the online device list manually. The newly searched devices will be added to the list.

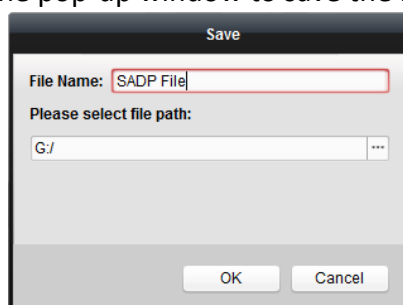


You can click ▲ or ▼ on each column heading to order the information; you can click ► to expand the device table and hide the network parameter panel on the right side, or click ◀ to show the network parameter panel.

Double-click the IPv4 Address field of the searched device, and the login interface via web browser of the device will be opened. You can enter the user name and

password to log into the device.

To save the information of searched devices, please click **Save as Excel** and set the file name and file path in the pop-up window to save the information as excel file.



## 2.2 Activating the Device

Before you can log into the device properly, you must create a password for the administrator user “admin” of the device to activate it. Follow the steps below to activate the device.



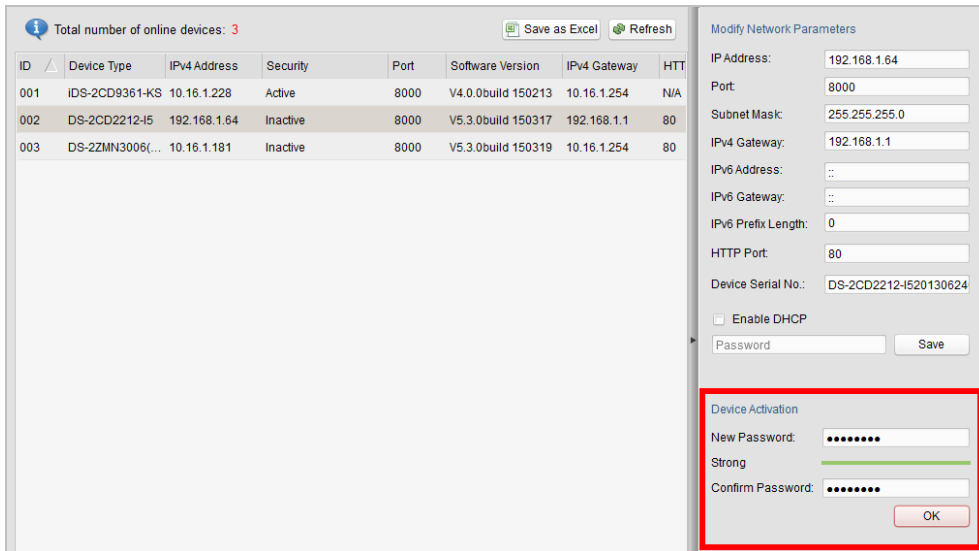
This function should be supported by the devices.

### **Steps:**

1. Select the device which is in inactive status. You can also select multiple inactive devices for activating them simultaneously with the same password.
2. In the Device Activation field, create a password for the device and confirm the password.



The system will judge password strength automatically, and we highly recommend you to use a strong password to ensure your data security. A strong password ranges from 8 to 16 characters, and must contain at least three of the following categories: numbers, lowercases, uppercases and special characters.

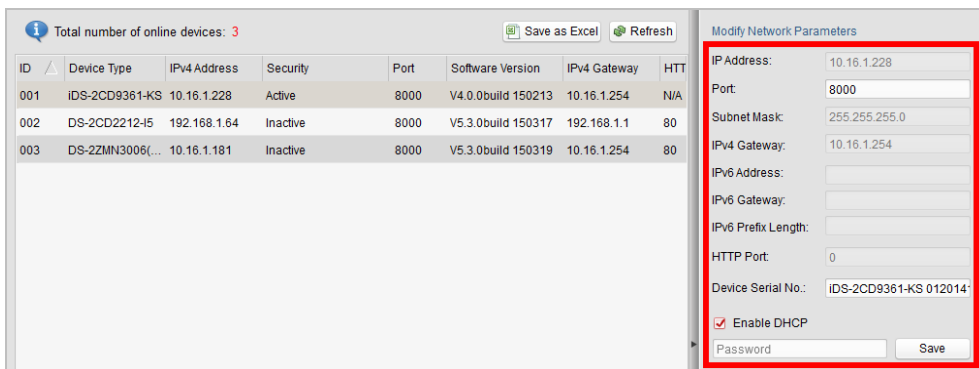


## 2.3 Modifying the Network Parameters

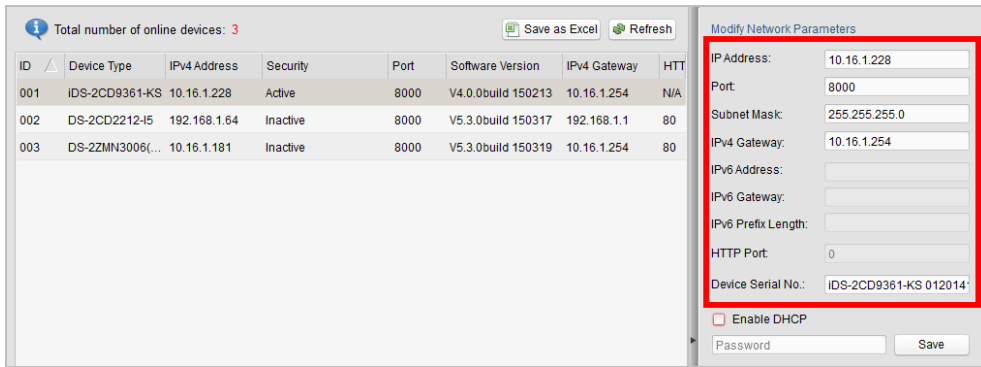
### Task 1: Modifying Network Parameters of One Device

#### Steps:

1. Select the device to be modified in the device list and the network parameters of the device will be displayed in the **Modify Network Parameters** panel on the right side.
2. If the DHCP function of the device is enabled, you can edit the port No. and HTTP port No. of the device. You can also uncheck the **Enable DHCP** checkbox to set the modifiable network parameters (e.g., IP address, subnet mask) manually.



3. If the DHCP function of the device is not enabled, you can set the modifiable network parameters (e.g., IP address, subnet mask) as desired. You can also check **Enable DHCP** checkbox to obtain the IP Address, Subnet Mask, IPv4 Gateway, IPv6 Address and IPv6 Gateway of the device automatically.



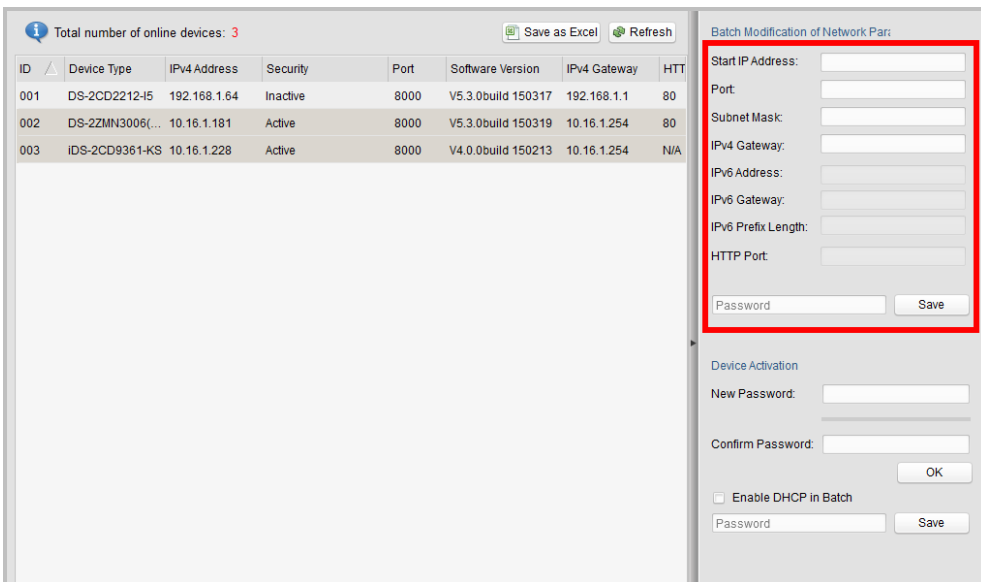
- The IPv6 should be supported by the device.
  - The DHCP function should be supported by the device and the router that the device connected with.
4. Enter the password of the admin account of the device in the **Password** field and click **Save** to save the changes.

## Task 2: Modifying Network Parameters of Multiple Devices

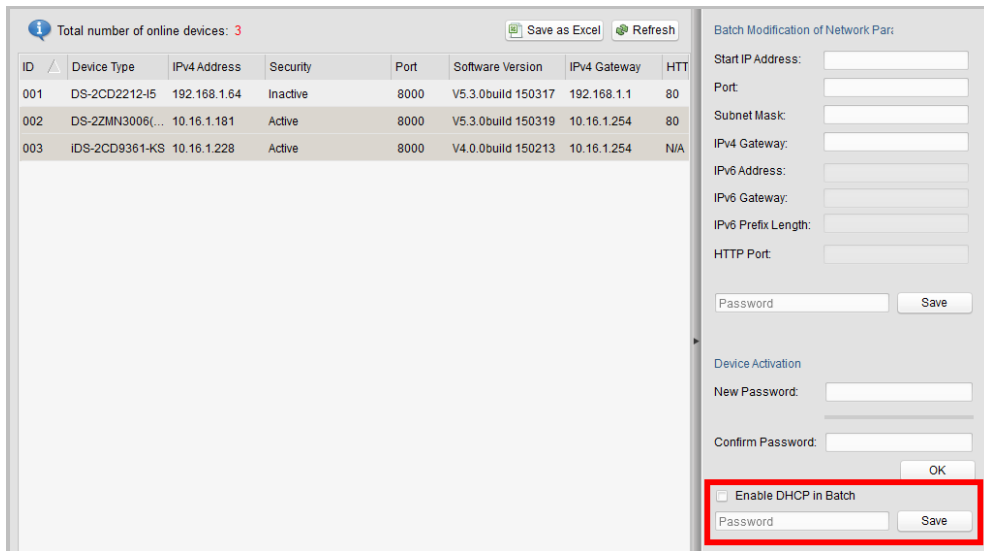
### Steps:

1. Click and drag to select multiple devices to be modified in the device list.
2. In the **Modify Network Parameters** panel on the right side, edit the modifiable network parameters, e.g. start IP address and port.

**Example:** If you select 3 devices for modification and set the start IP address as 10.16.1.21, then the IP addresses of the devices will be modified as 10.16.1.21, 10.16.1.22 and 10.16.1.23 in order.



3. Or you can check **Enable DHCP in Batch** checkbox to enable the DHCP function for the selected devices. In this way, the IP Address, Subnet Mask, IPv4 Gateway, IPv6 Address and IPv6 Gateway of the devices can be obtained automatically.



- The IPv6 should be supported by the device.
  - The DHCP function should be supported by the device and the router that the device connected with.
4. Enter the password of the admin account of the devices in the **Password** field and click **Save** to save the changes.

## 2.4 Restoring and Resetting Password

### 2.4.1 Restoring the Default Password

**Purpose:**

For some devices, if you forget the admin password of your device, you can restore the default password.

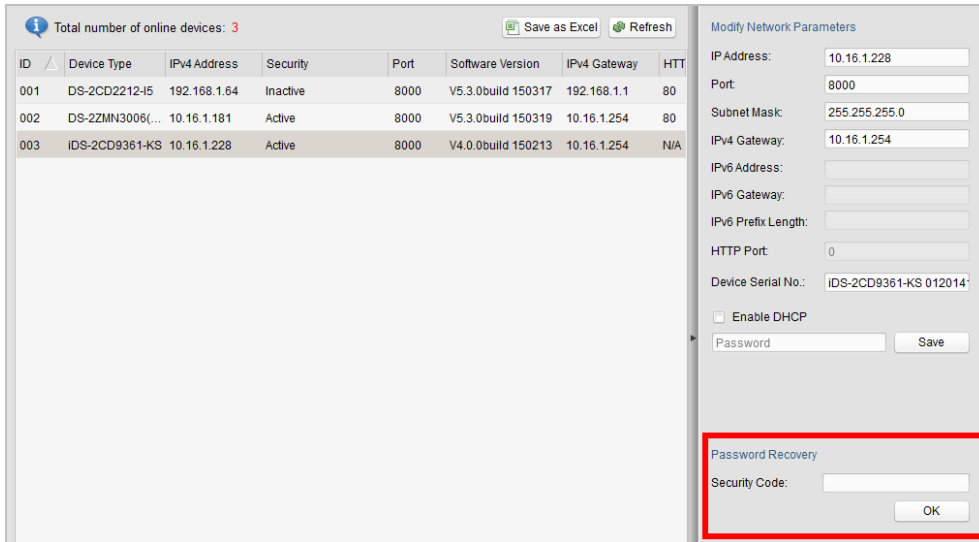
We provide two different methods for restoring the default password according to your devices.

Depending on your devices, we provide two different methods selectable for restoring the default password.

- **Option 1**

Select the device for restoring default password, if the Password Recovery field is shown as the following figure, please perform the steps below.



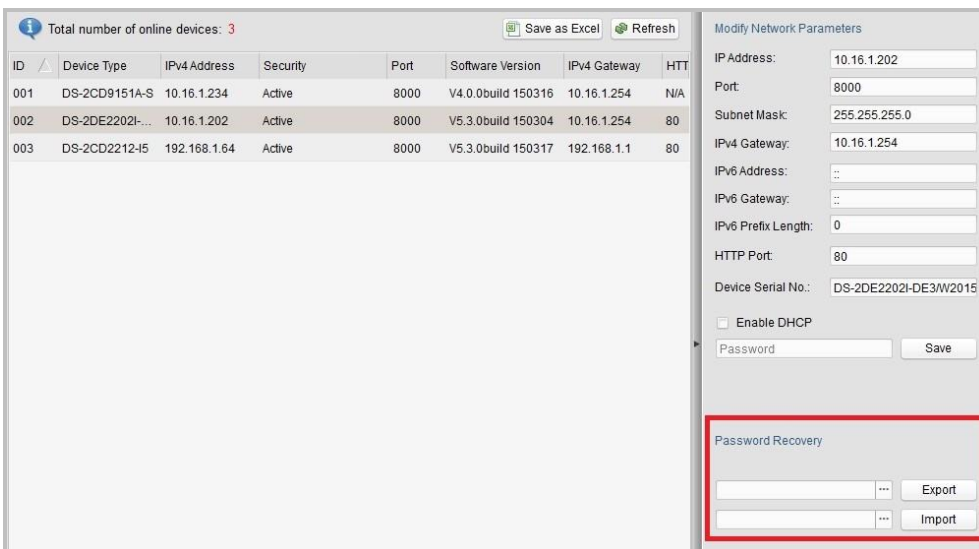


**Steps:**

1. Send the current date and the serial No. of your device to our technical engineers, and you will get a security code.
2. Input the code in the **Security Code** field and click **OK** to restore the default password of the device.

● **Option 2**

Select the device for restoring default password, if the Password Recovery field is shown as the following figure, please perform the steps below.



**Steps:**

1. Click [...] and set the file path in the pop-up window and click **Export** to save the device file on your PC
2. Send the file to our technical engineers.
3. Click [...] and select the file received from the technical engineer, and click **Import** to restore the default password of the device.



- ◆ *The default password (12345) for the Admin account is for first-time log-in purposes only. You must change this default password to better protect against security risks, such as the unauthorized access by others to the product that may prevent the product from functioning properly and/or lead to other undesirable consequences.*
- ◆ *We highly recommend you to use a strong password to ensure your data security. A strong password ranges from 8 to 16 characters, and must contain at least three of the following categories: numbers, lowercases, uppercases and special characters.*
- ◆ *Proper configuration of all passwords and other security settings is the responsibility of the installer and/or end-user.*

## 2.4.2 Resetting the Password

### **Purpose:**

If you forget the admin password of your device, you can perform the following steps to reset the password.



This function should be supported by the devices.

### **Steps:**

1. Select the device for resetting the password.
2. Input new password in text fields of **New Password** and **Confirm Password**.



*The system will judge password strength automatically, and we highly recommend you to use a strong password to ensure your data security. A strong password ranges from 8 to 16 characters, and must contain at least three of the following categories: numbers, lowercases, uppercases and special characters.*

3. Click  and set the file path in the pop-up window and click **Export** to save the device file on your PC
4. Send the file to our technical engineers.
5. Click  and select the file received from the technical engineer, and click **Import** to reset the password for the device.

Total number of online devices: 3 Save as Excel Refresh

ID	Device Type	IPv4 Address	Security	Port	Software Version	IPv4 Gateway	HTT
001	DS-2CD2212-15	10.16.1.222	Active	8000	V5.3.0build 150317	10.16.1.254	80
002	DS-2ZMN3006(...	10.16.1.181	Active	8000	V5.3.0build 150319	10.16.1.254	80
003	IDS-2CD9361-KS	10.16.1.228	Active	8000	V4.0.0build 150213	10.16.1.254	N/A

Modify Network Parameters

IP Address: 10.16.1.222  
Port: 8000  
Subnet Mask: 255.255.255.0  
IPv4 Gateway: 10.16.1.254  
IPv6 Address: ::  
IPv6 Gateway: ::  
IPv6 Prefix Length: 0  
HTTP Port: 80  
Device Serial No.: DS-2CD2212-1520130624

Enable DHCP  
Password Save

Reset Password

New Password:   
Weak -----  
Confirm Password:

... Export  
 ... Import