

NetumScan

QUICK START GUIDE

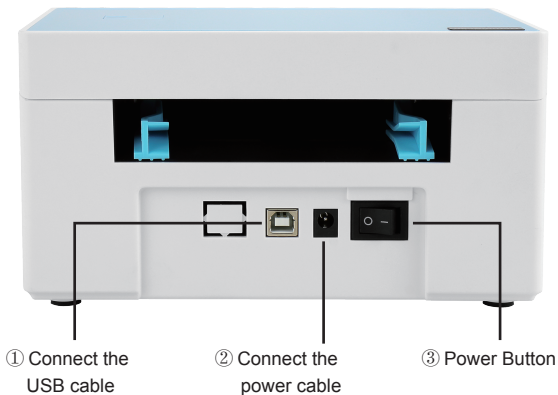
NT-LP110C

THERMAL LABEL PRINTER

Congratulats on your label printer purchase.

The NetumScan printer you have purchased is a high-efficiency thermal printer and does not require any ink or toner. Prints will be made by instantly heatng compatble labels. Please take a moment to thoroughly review this user guide. Incorrect operaton may result in damage or injury.

QUICK START



You can also download the latest driver here:

Windows :

<https://cdn.shopify.com/s/files/1/2144/8019/files/LabelPrinter20210603.exe?v=1628670954>

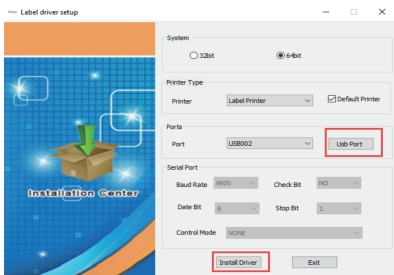
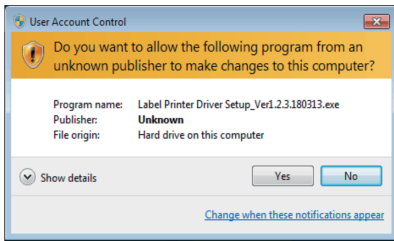
Mac :

<https://cdn.shopify.com/s/files/1/2144/8019/files/MACOS.zip?v=1628671000>

Windows

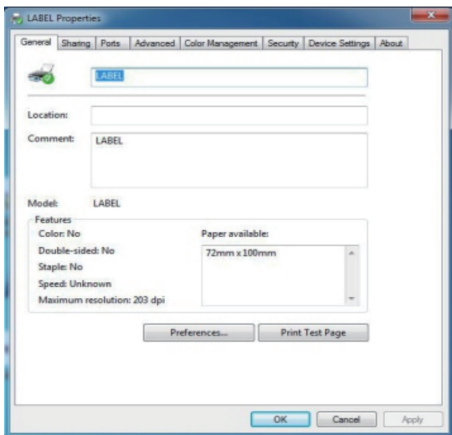
PRINTING SETUP

Browse support CD, You can choose Windows or MacOS driver for label printer. Note: Your computer may prompt that there is a virus in the driver installation, but this is safe, please don't worry



If the printer is USB interface,click the "Get USB Port" to automatically identifythe USB port other interfaces, click "Install Driver"

If Label printer driver installation is successful, it will automatically pop up printer properties interface as shown below:



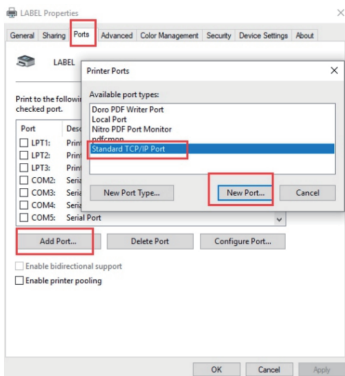
Click "Print Test Page", if the printer prints a normal page, it indicates that the installation was successful.

Note: If the printer prompts "Printing Error", return to the "Port" option, select USB0001, or USB002, or USB003... and test it again.

How to use the LAN port of printer

Get the local IP address from Self-test page. The method of printing Self-test page: Hold down the FEED button in the shutdown state, and then press and hold the POWER button to power on, when you see the "ERROR" Red light is ON, then release the FEED button. You can get the IP address from the self-test page (Default IP address: 192.168.1.100)

Open the printer properties interface and select "port", as shown in the figure below. Select "Add Port", as shown below:



Add Standard TCP/IP Printer Port Wizard



To continue, click Next.

Add Standard TCP/IP Printer Port Wizard

Add port

For which device do you want to add a port?



Enter the Printer Name or IP address, and a port name for the desired device.

Printer Name or IP Address:

192.168.1.100

Port Name:

192.168.1.100_1

< Back

Next >

Cancel

Select Standard "Generic Network Card" and Next

Add Standard TCP/IP Printer Port Wizard

Additional port information required

The device could not be identified.



The device is not found on the network. Be sure that:

1. The device is turned on.
2. The network is connected.
3. The device is properly configured.
4. The address on the previous page is correct.

If you think the address is not correct, click Back to return to the previous page. Then correct the address and perform another search on the network. If you are sure the address is correct, select the device type below.

Device Type

Standard

Generic Network Card

Custom

Settings...

< Back

Next >

Cancel

Add Standard TCP/IP Printer Port Wizard



Completing the Add Standard TCP/IP Printer Port Wizard

You have selected a port with the following characteristics.

SNMP:	No
Protocol:	RAW, Port 9100
Device:	192.168.1.100
Port Name:	192.168.1.100_1
Adapter Type:	Generic Network Card

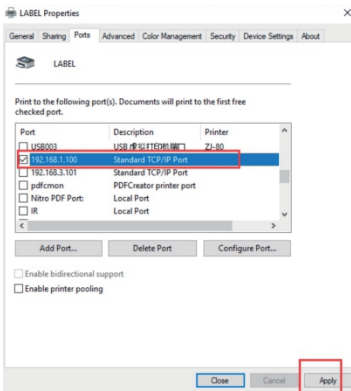
To complete this wizard, click Finish.

< Back

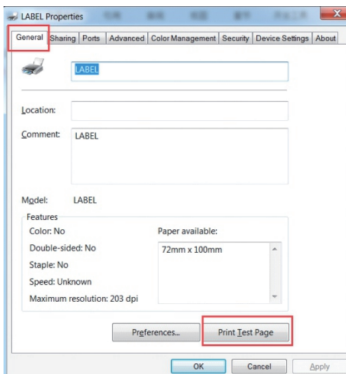
Finish

Cancel

After "Finish", and then click "Apply":



You can click the "Print Test Page" to have a test:

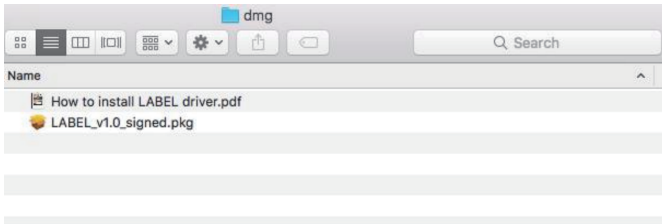


Mac

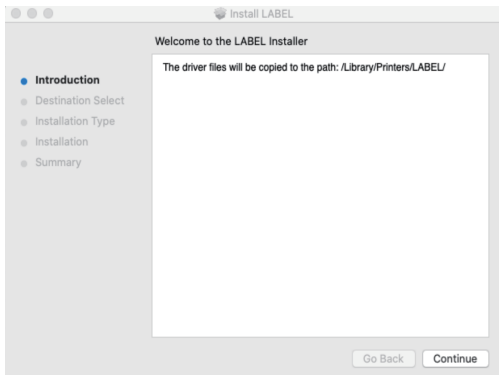
PRINTING SETUP

How to install LABEL driver

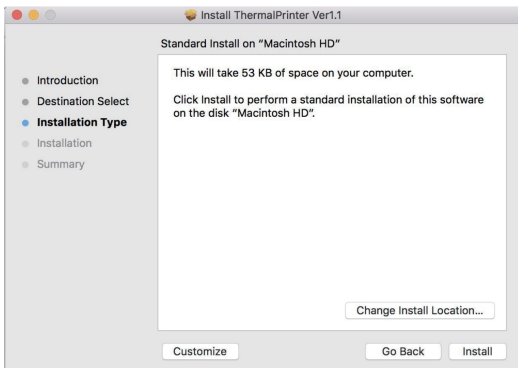
1. Double click the LABEL .dmg
2. Double click LABEL_V1.0_signed .pkg to install the driver.



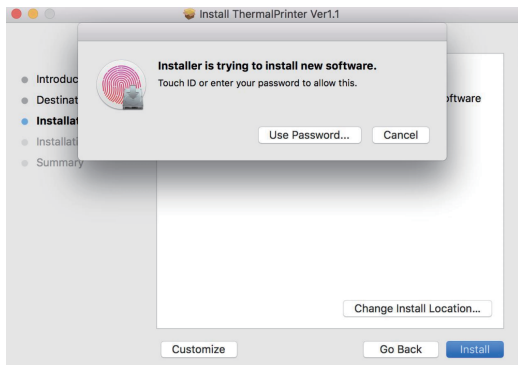
3. Click “continue” button.



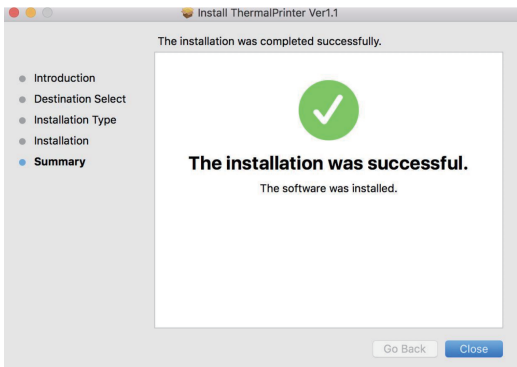
4.click “Install”



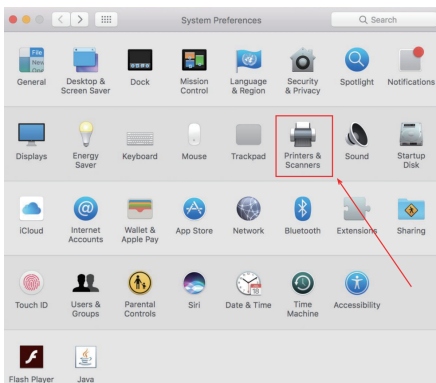
5.Use Touch ID or Enter your password.



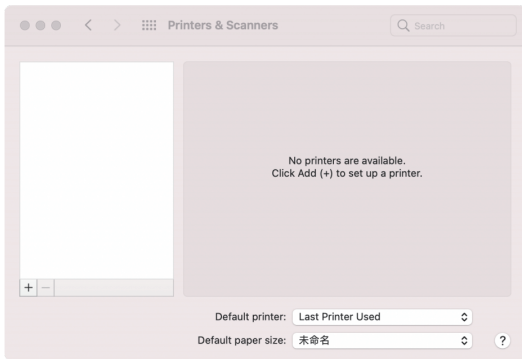
6. Click “Close” to finish.



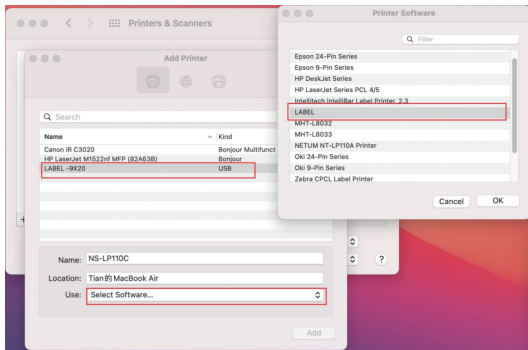
7. Open “System Preferences”, and click “Printers and Scanners”.



8. click “+” to add a new printer.



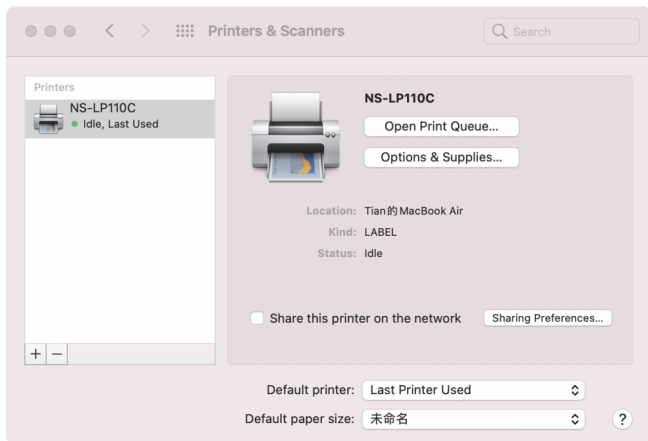
9. Turn on your printer, and choose “LABEL”, select “Select Software” under “Use” drop down menu.



10. Click “Add”

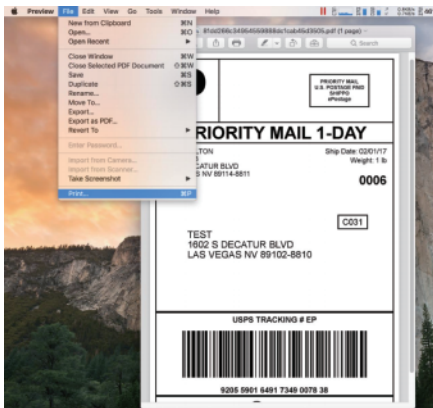
11. Use Touch ID or enter your password.

12. Finish.

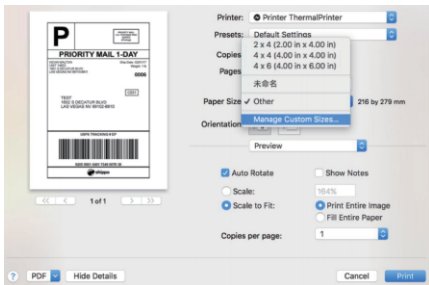


How to change the setting of the printer, and how to define label size(Privity)

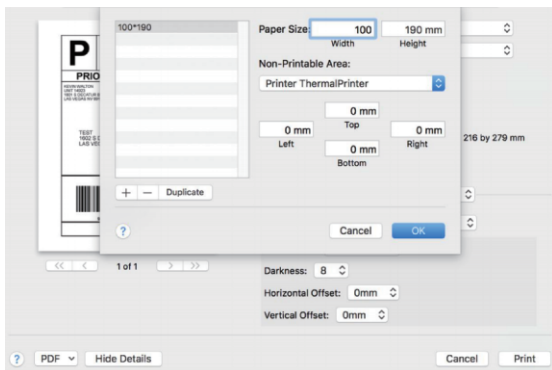
1. Open a PDF file(any document file is ok), Select “File”-->”Print”.



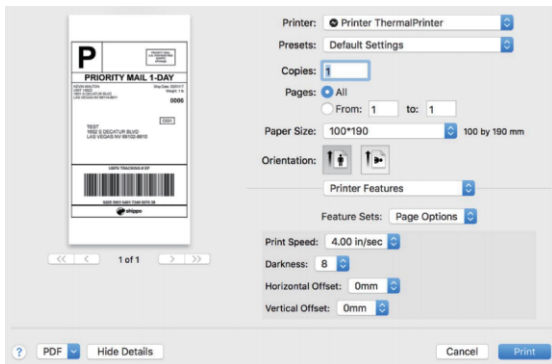
2. Choose “Manage Custom Sizes” under “Paper Size ” drop down menu.



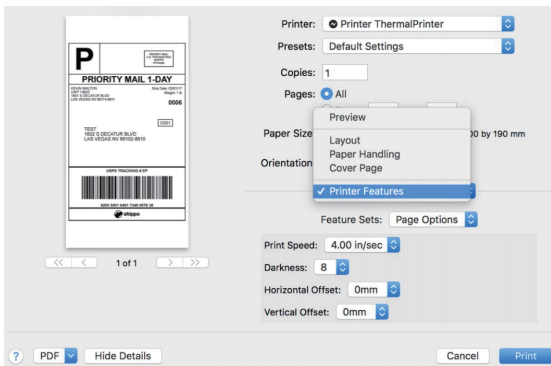
3. Click “+” to define a new label size, click “OK” to save.



4. You can select the new Label “100*190” now.



5. Select “Printer Features”, then you can change the setting of printer, for example: Speed, Darkness.



6. Click “Print”.

MAINTENANCE

CLEANING THE PRINT HEAD

The printer head is a sensitive part of the printer and can be found on the upper part of the printer when open.

Caution: While the printer is running the printer head can be very hot.

1. Ensure that the power switch is OFF, remove the power cord, and open the cover as outlined above in step 4. wait several moments to ensure that the printer head cools down.

2. Completely clean the printer head using an alcohol swab . Any 70% Isopropyl Alcohol pad would work. Please do not use water.
3. Ait 2-3 minutes until the alcohol has completely dried, then close the cover.
4. Connect the power cord and print a test page to check if it is clean.

PRO TIPS

- Anytime you'd like to change your label size, run the automatic label identification by pressing and holding the feeder button until you hear one short beep.
- Press the orange feeder button on the printer to skip a blank label.
- To run a self-test, press and hold the feeder button until you hear two short beeps.
- Avoid using poor quality labels as they can damage the printer.
- Regularly clean the printer head as outline above, under MAINTENANCE.
- If paper is jammed, turn off the printer, and allow the printer head to cool down. Open the cover and ensure that the rubber is clean. If it is dirty, use alcohol pad to clean it. Allow the area to dry before turning the printer back on.
- Insert the printer's USB into the USB port on your computer every time you plug it in. This will avoid creating duplicate copies of the printer on your computer.

SAFETY

TIPS

- The printer head can become very hot after printing labels. Do not touch the printer head until it has cooled.
- Do not bend the power cord excessively or place objects on the cord. This could result in fire or electrocution.
- Keep the printer out of reach of children.
- Use only approved accessories and do not try to disassemble or repair the unit by yourself.
- Keep the printer away from water and other objects that may destroy or damage the device.
- Printer should remain unplugged when not in use for long periods of time.

NetumScan SUPPORT

Your NetumScan label printer is covered by warranty.

In the unlikely event that you experience any issues with your printer, please contact service@netumscan.com for customer service to promptly help with any troubleshooting tips or a replacement.

For any questions and/or suggestions, please email the NetumScan team at: service@netumscan.com or visit <https://netumscan.com/> and click on support. For how-to videos, parts and full warranty details please visit <https://netumscan.com/>.

Happy Printing!