

# ASSEMBLY INSTRUCTION



ITEM#: 210A4615-F1




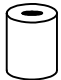
ITEM#: 210A4615-F2

ITEM#: 210A4615-F3

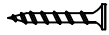

ITEM#: 210A4615-F4

Thank you for your purchase of the Homelegance lift top storage bench w/pull-out bed. Please check below instruction for assembly.

## PART LIST

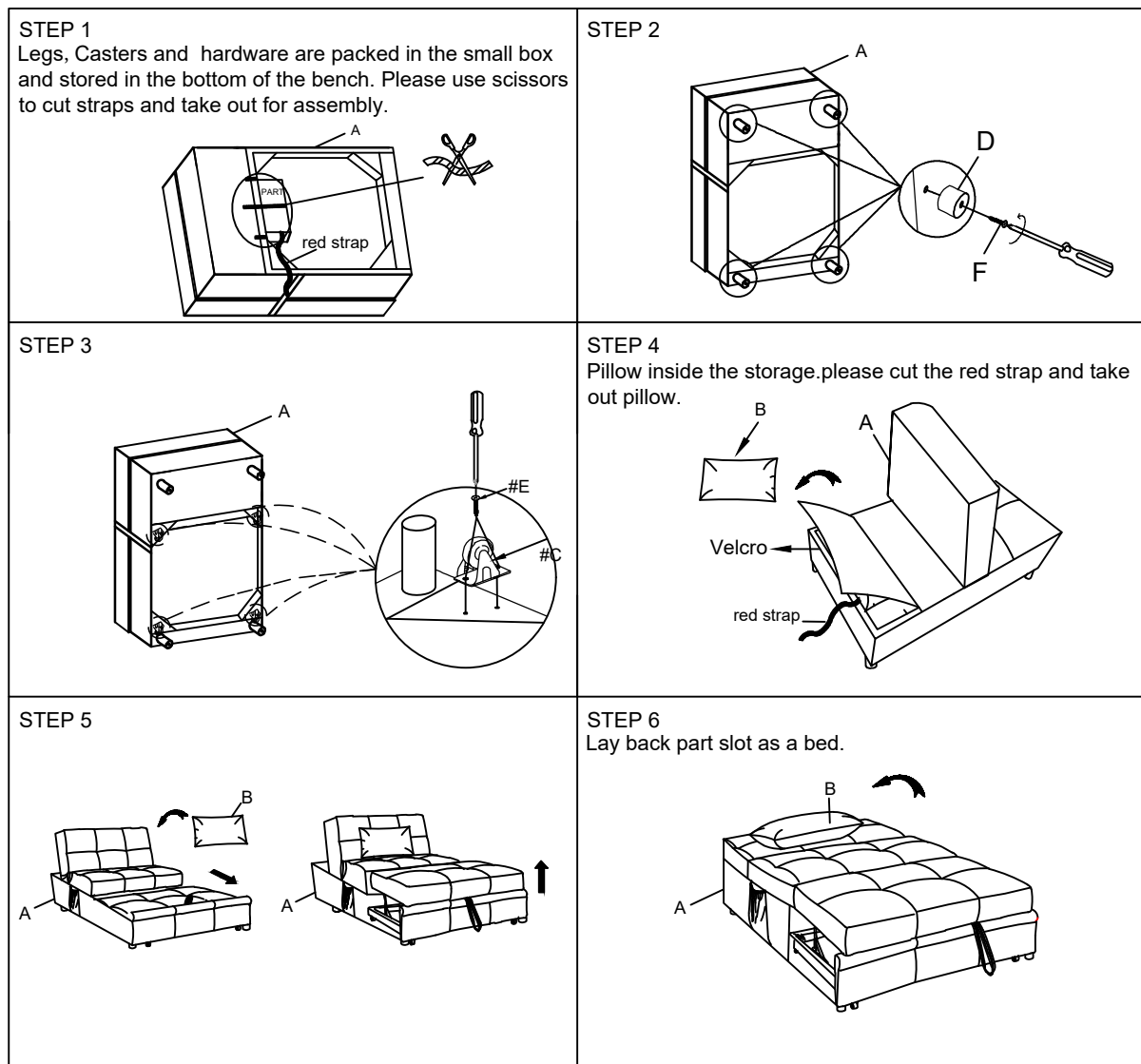
NO.	DRAWING	QTY	DESCRIPTION
A		1pc	Pull Out Bed
B		1pc	Pillow
C		4pcs	Caster
D		4pcs	Plastic Leg Ø2"

## HARDWARE LIST

E		8pcs	Screw #8 x 25mm
F		4pcs	Screw #8 x 45mm

NOTE: Do not tighten the bolts until all parts are assembled. Legs, caster and hardware are stored in the bottom of the bench, please take out for assembly.

# Configuration



## CARE INSTRUCTION FOR FABRIC:

In order to maintain the original appearance of your fabric furniture, please follow below simple care procedure:

- Avoid exposing furniture directly to sunlight or heating and air conditioning outlets. Exposure to sunlight or heating and air conditioning outlets will fade/damage fabric.
- Wipe gently with a damp soft cloth to remove dust, dirt and any grime build up.
- ⚠ It is recommended to install protective pads under all legs and supports to avoid damage or scratches when placing furniture on a wood floor or other hard surface and to limit indentation and prevent discoloration if placing on carpet.