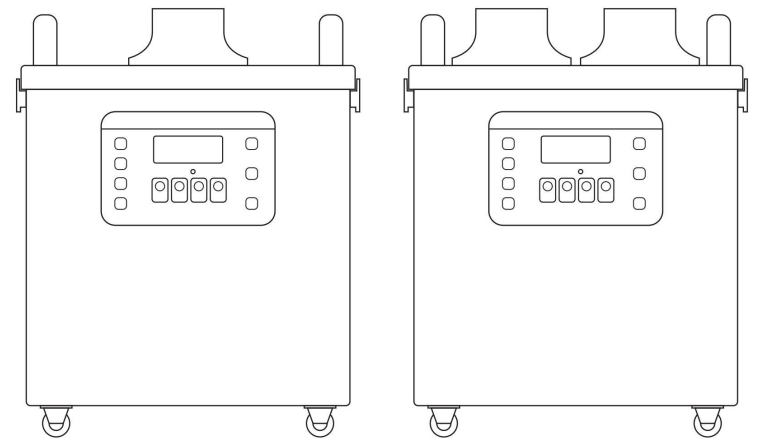


Instruction Manual



220w Fume Extractor

Product Overview

Our Company's products have passed CE security certificate and the purifying effect has been confirmed by American PONY international professional testing agency with the following certificates.

This product is suitable for places involved in air pollution like smoke, peculiar smell, dust, poisonous and harmful gas, during the process of soldering, laser marking & carving, printing, and medical care, etc.

With the triple-filter design and powerful suction, the absorbing efficiency and filtration ratio can reach 99.97%. The purified air can be discharged directly indoors.

Unpacking Inspection

Please carefully check following parts. If there is any missed or damaged items, please contact customer service department or dealers.

Name of Parts	Q'ty	Specification	Remarks
Machine	1		
Power Line	1	1.5M	
Smoking absorbing pipe	1/2	Φ75*1.4M	
Adapter	1/2	100MM	
Operation Manual	1		
Primary filtering cotton	5		One of the five pieces is installed in the main unit.
Medium effect filtering core	1		Being installed in highly-effect
Medium effect filtering core	1		Main-effect filtering core is included in the high-efficient
Remote Control	1		



Check Before Using

Before switching on the power for the first time, please ensure the following points, so as to guarantee the safety in operation.

1. Whether appearance is intact;
2. the power switch is set to OFF position;
3. Whether filter element is evenly placed;
4. Whether the cover and box body is installed securely;
5. Whether the speed-regulating button is adjusted to "OFF" Status;

Safety Precautions

Before use, please carefully check the safety precautions as below to prevent fire and personal injury.

1. This product is prohibited to be used under high temperature environment (above 80°C), inflammable, explosive or greasy environment.
2. Supply wire must be grounded during operation.
3. Internal electric voltage of the product is as high as 310V.  
Disassembly of the product for inspection or maintenance must be performed by professionals.
4. Do not pick and place filter elements when products are in operation.
5. Hands or other objects should not touch the rotating impeller.

filter element regularly to ensure the machine's working in good condition

7. In case your machine filter element is blocked up, the suction force is lowered or the filter element for foreign odor removal fails for foreign odor removal, it's not permitted to use this machine by reducing the machine's number of layers of the filter elements or without putting in primary filter element or cotton. Please replace it with the filter element and primary filter cotton configured by the original manufacturer.
8. Never open the machine for maintenance by yourself, the warranty sticker on the machine is the only voucher for you to enjoy after-sales service, so please don't tear it up or damage it

We will not undertake any of the losses above. Such losses are not included in the warranty.

Contents

1. Structure and dimensions

2. Performance and indicators

3. Using instruction

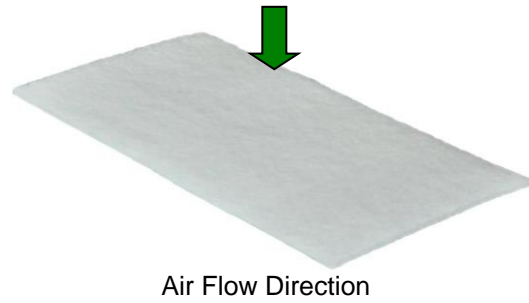
- 3.1 Filtering core installation instructions
- 3.2 Installation instructions of smoke absorbing pipe
- 3.3 Digital display machine operation instruction

4. Troubleshooting

5. Filtering core system using methods and maintenance

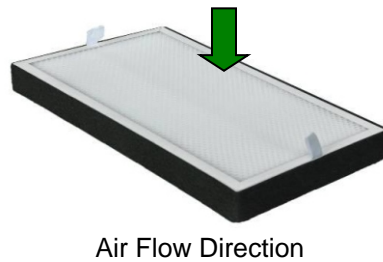
6. Attentions

1.Pre-filter



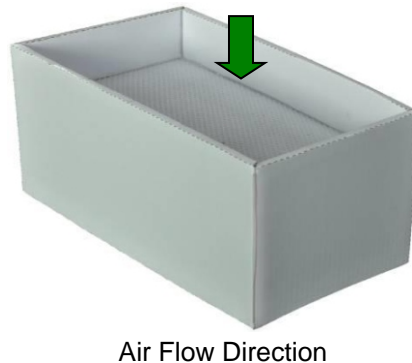
Using method: Place the Pre-filter on top of Middle Filter. The front side (rough side) is facing upwards (air inlet direction). When the accumulated dust on the Pre-filter is over 70% and cannot be cleaned any more, please replace the Pre-filter with a new one.

2.Middle Filter

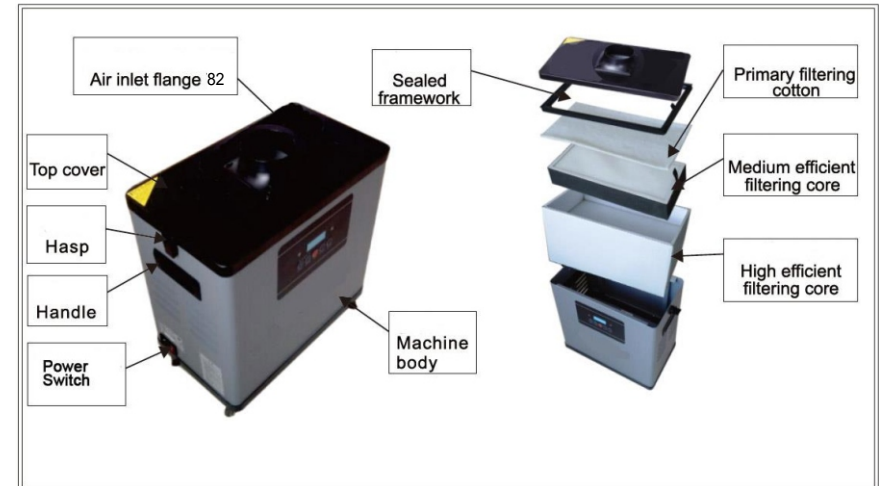


Using method: With the handle side facing up, put the Middle Filter inside the Main Filter. It shall be immediately cleaned off when the accumulated dust on the Middle Filter evidently affects the suction power. When it cannot be cleaned any more, please replace the Middle Filter with a new one.

3.Main Filter



1. Structure and dimensions



2. Performance index

Parameters \ Model		
Air Inlet Interface	82mm Flange	82mm Flange
Input Voltage	AC220V	AC220V
Maximum Power	220W	220W
Air Velocity	18m/s	22m/s
Filtering Efficiency	0.3µm 99.97%	0.3µm 99.97%
Noise	< 55dB	< 55dB
Length of Duct	1.4m	1.4m
Systemic Flow	310m ³ /h	330m ³ /h
Dimensions of Main Unit	L430XW245XH457mm	L430XW245XH457mm
Weight (excluding the duct)	16kg	16.0kg

3.Usinginstructions

3.1 Filtering core installing instruction

Open the top cover, correctly install high-efficient filtering core,medium-efficient filtering core, primary-efficient cotton filtering with top cover and press for buckle hasps at the two sides.

3.2 Duct Installation Instructions

1.Take out hose from package, and fix it with the flange on the cover of the machine.

2.Turn the tube, aim exhaust fume collecting hood with smoke outlet. Adjust the suction distance based on use occasions.

◆ Attention: When adjusting the direction of suction tube, try to maintain a broad warp of the tube, otherwise it will affect the suction force. The suction inlet shall directly face the working point. Keep the distance within 150mm.

◆ Attention: Try to avoid areas with large air flow, otherwise suction force will be affected or be totally blown away.

Using method: With the handle side facing up, place the Main Filter at the bottom inside the machine. When it cannot effectively eliminate the peculiar smell in the smoke, please replace it with a new one.

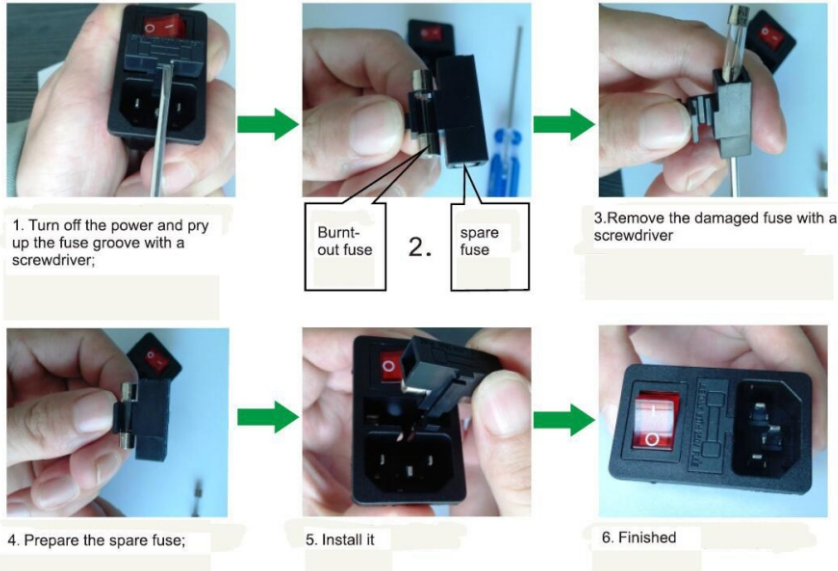
6.Attentions

1. The power input of this product shall be used with in the specified nominal voltage scope (subject to power identification on the product body) 。 It's strictly forbidden for the use with excessive high or low voltage, if the ambient voltage is unstable, please turn off the machine, unplug the power plug and use it again upon power stabilizing
2. While using the machine, the ambient temperature range of the gas and the dust sucked into the air inlet: atmospheric temperature - 60 ℃, never use it when the temperature is higher or lower than this temperature scope.
3. When using the machine, the humidity of the gas and the dust sucked into the air inlet should be between 40%-80%;if the humidity is excessively high,the filter element will become invalid rapidly and the internal circuit will be damaged; never use it when the humidity is higher than 80%
4. When the machine has primary cotton filter, properly install the primary cotton filter before use, primary cotton filter can be classified as disposable consumable and never use it again after washing, please replace the primary cotton filter configured by the original manufacturer, regularly. never use the machine without primary cotton filter or with poor primary cotton filter,(poor or washed primary cotton filter over the market performs poorly and medium and high-efficiency filter element in the subsequent stages will be blocked up or become invalid quickly and cause greater losses)
5. It's strictly forbidden to use this machine without a filter element, because the cooking fume or the dust particle sucked in the machine directly would cause damage to air blower and control system. Any fault caused by machine use under the aforesaid status shall be serviced at the user's own cost, there for greater losses can be caused
6. It's not permitted to continue to use the machine when the filter element or the filter cotton is blocked up. This will greatly shorten the service life of the machine, even damage the machine, please clean and maintain the machine regularly and replace the

lowest level and restart the machine. The machine will be back to normal.

3. Turn the power switch on if the power indicator does not light up, the fuse might be bad and needs to be replaced, the replacement fuse steps:

Operation steps to replace the fuse:



If the trouble remains after these inspections and maintenance, please contact the manufacturer or dealer.

5. How to use and maintain the filters

This product uses replaceable filtering consumables. When the consumables have been used to a certain extent, they need to be cleaned or replaced, in order to guarantee the good purifying effect of the machine.

3.3 Digital display machine operation instruction

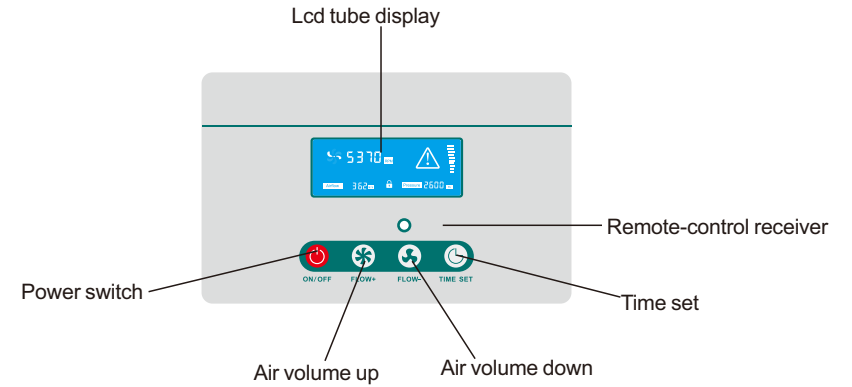


Illustration of Control Panel

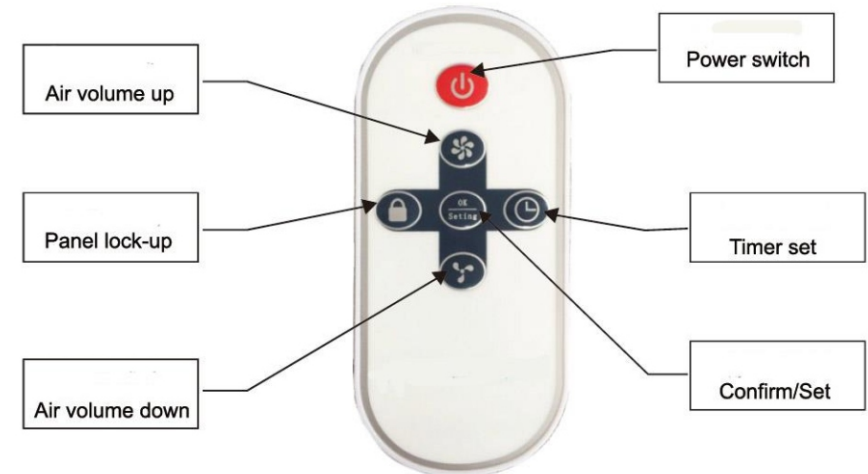


Illustration of Remote Control

Functions of buttons Power Switch button

Press the power switch and the orange light is on. The machine starts to work. Turn off the orange light, the machine will stop running. (Attention: In case of long time shutdown, please turn off the main power switch on the machine and unplug the power plug.)

Air volume up button

press this button when the machine is running, the number on digital tube display increase in multiples of 10, the maximum number is 100, which means the machine is running in full speed.

Air volume down button

press this button when the machine is running, the number on digital tube display increase in multiples of 10

time set button

While the machine is running and you press this button, the digital display will show HXXX. Then press the Increasing /Decreasing Air Flow buttons to adjust the shutdown timing. XXX represents the set running hours of the machine with the maximum of 300 hours and the minimum of 1 hour. After you complete the setting, press the Time Set button again, the digital display will show the fixed set time: HXXX. For example H005 represents that the machine will shut down automatically in 5 hours.

Set button

If the machine is in alarm status and buzzer sounds, press this button to relieve the sound. If the machine is not in alarm status, press this button to check the total working hours of the machine.

Locking Control Panel

Press this button when the machine is working, all function keys on the operation panel will be locked. Press again or reboot the machine to unlock.

4. Troubleshooting

- ◆ Make sure the power is switched off before inspecting or repairing!

Problem 1: The machine still works, but the air flow is very weak and suction power is greatly reduced.

Cause: Air Inlet is blocked or foreign body exists inside the duct. The filter becomes saturated and hence gets blocked and gives an alarm.

Solution: Turn off the power and open the top cover. Check if there is any foreign body blocked in the air inlet. Then check if the air vent is blocked or not. If the suction power of the empty-loaded machine is normal, it means the filter needs to be replaced.

Problem 2: The machine shuts down automatically after it is just started. Even if you restart the machine, the same problem happens again.

Cause: The air flow inside the machine is not smooth. The obstruction of the filter is very strong. As a result, the starting current of the fan becomes very high, hence the machine shuts down automatically for self protection.

Solution: Turn off the power and open the top cover. Check if there is any foreign body blocked in the air inlet. Then turn the speed-adjusting knob to the