

If the water temperature remains unchanged and only cold water is dispensed.

1. Reset the power



① Unplug the power cord

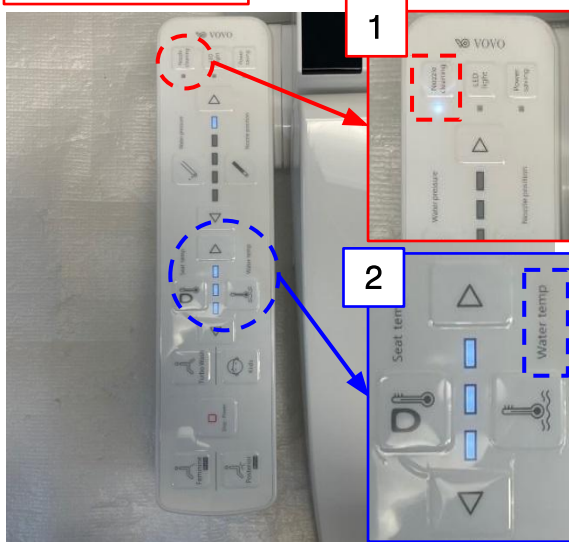


② Plug it back

If the water temperature remains unchanged and only cold water is dispensed.

2. Check the sidebar and remote control settings

3K, 5K models



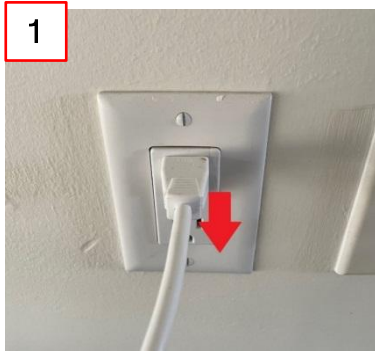
4K, 6K models



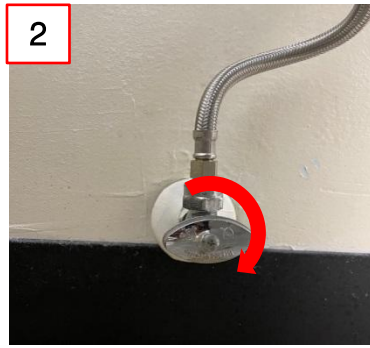
- ① Press the nozzle cleaning button located on the side control bar (3K, 5K models) or on the remote control (4K, 6K models).
- ② Examine the hot water temperature settings on the side control bar (3K, 5K) or the remote control (4K, 6K).
- ③ After adjusting the hot water temperature, wait 3 to 4 minutes and then check if the hot water is functioning properly.

If the water temperature remains unchanged and only cold water is dispensed.

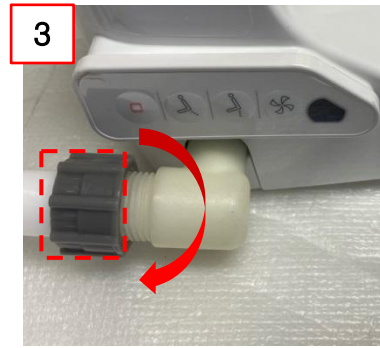
3-1. Detach the bidet



① Unplug the power cord.



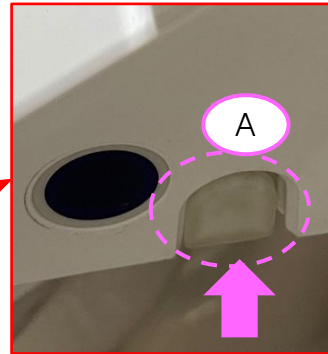
② Turn off the valve



③ Unscrew the hose

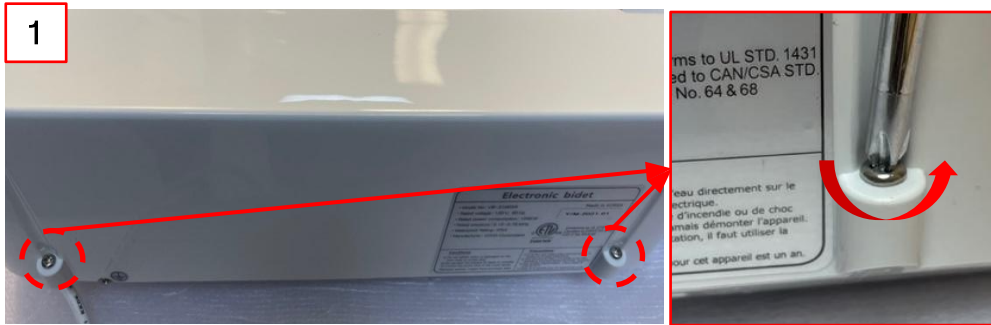


④ While pressing part A on the right side of the bidet, pull the bidet towards the direction indicated by arrow B to detach it

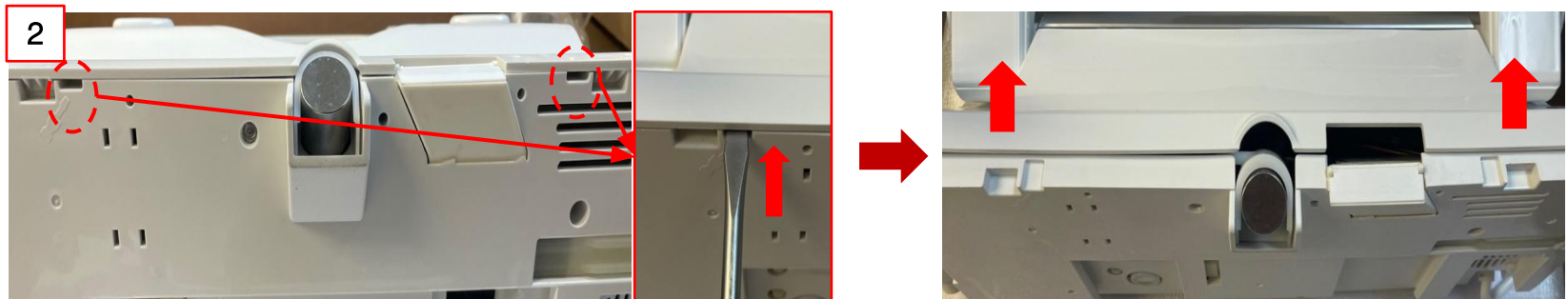


If the water temperature remains unchanged and only cold water is dispensed.

3-2. Open the cover base



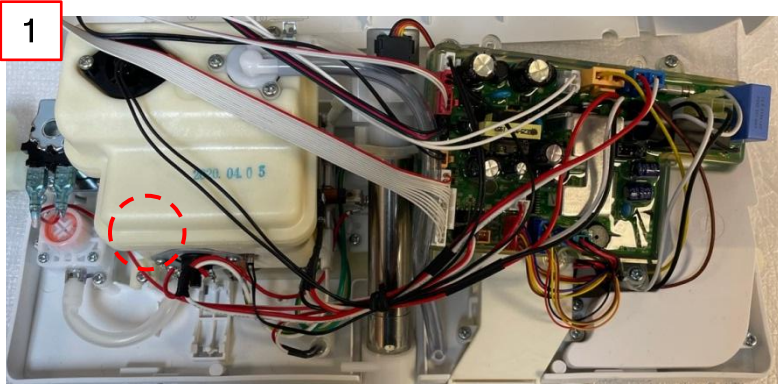
① Use a driver to remove the 2 screws in the back.



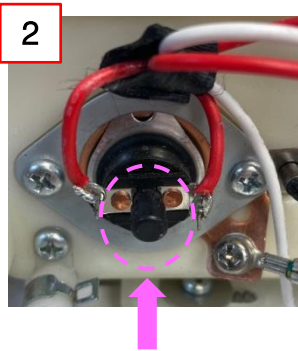
② Insert a flat-head screwdriver into the specified area and gently lift upwards to remove the cover base.

If the water temperature remains unchanged and only cold water is dispensed.

3-3. Return the thermostat



① Check the location of the thermostat in the indicated area.

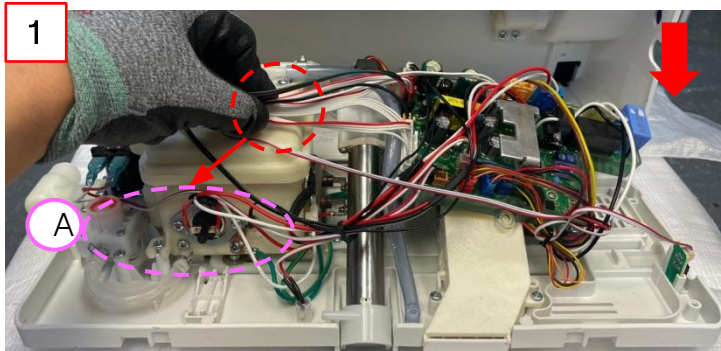


② Press the thermostat switch until it clicks.

(If there is no 'knock' sound, it is still normal.)

If the water temperature remains unchanged and only cold water is dispensed.

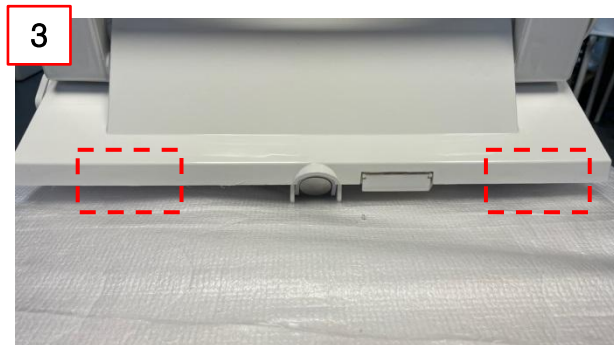
3-4. Close the cover base



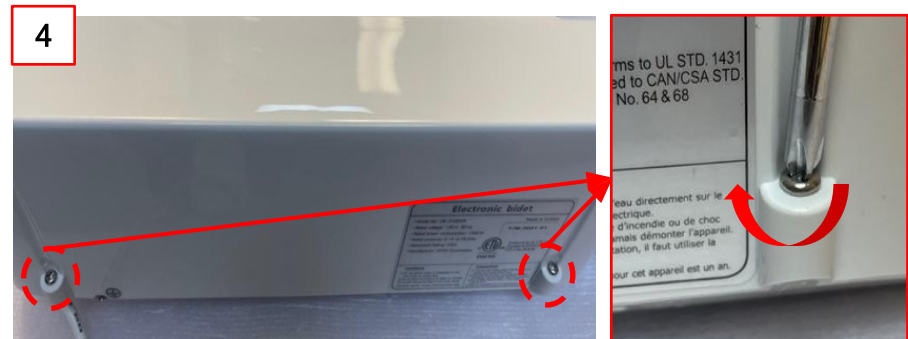
① Pull the harnesses connected to the seat towards the space on side A, and then close the cover base.



② Press the indicated part in the direction of the arrow to fasten it.



③ After assembly, verify that all components are securely fastened.



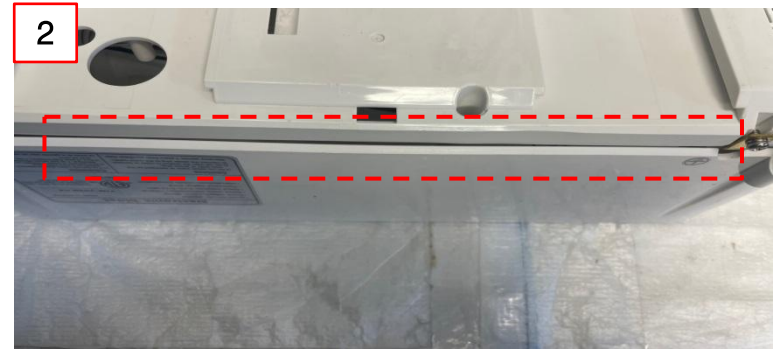
④ Use a driver to tighten the 2 screws in the back.

If the water temperature remains unchanged and only cold water is dispensed.

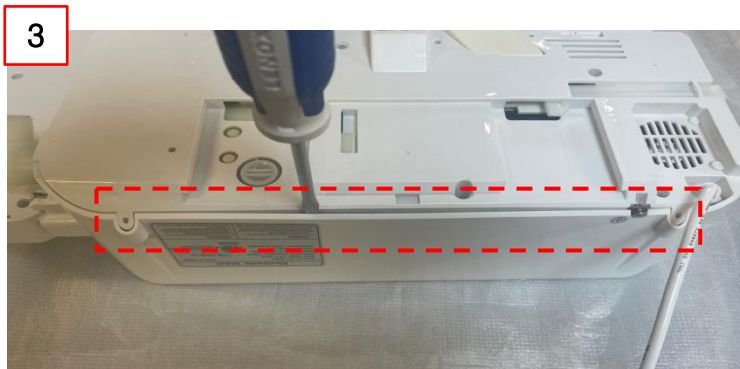
3-5. If the cover base does not close



① Flip the bidet



② Check the connection status of the rear part of the bidet.



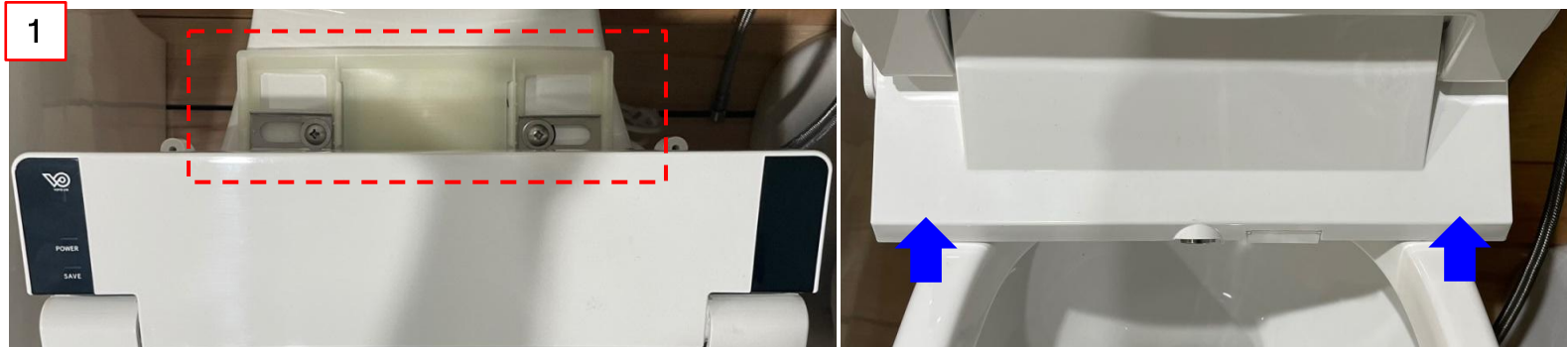
③ Use a tool, such as a flat-blade screwdriver, to create space in the cover base, and then proceed to attach it.



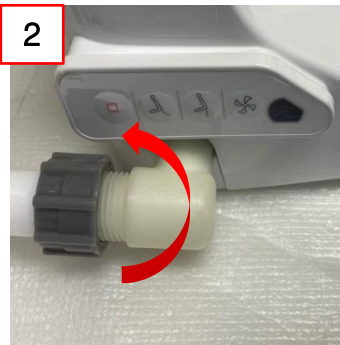
④ Press the indicated part in the direction of the arrow to fasten it.

If the water temperature remains unchanged and only cold water is dispensed.

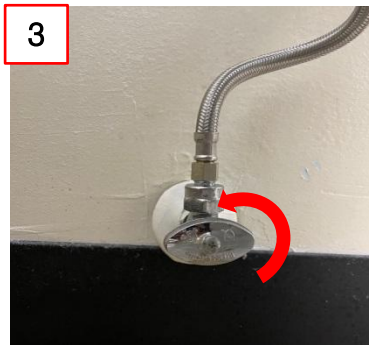
3-6. Install the bidet



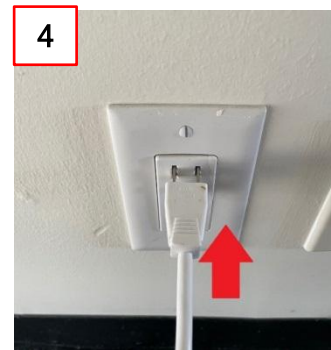
① Attach the bidet to the installed catch plate.



② Fasten the hose



③ Open the valve



④ Plug the cord

If the water temperature remains unchanged and only cold water is dispensed.

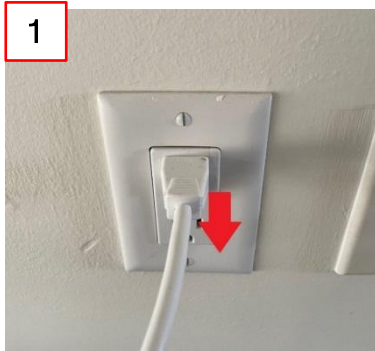
3-6. Hot water temperature setting



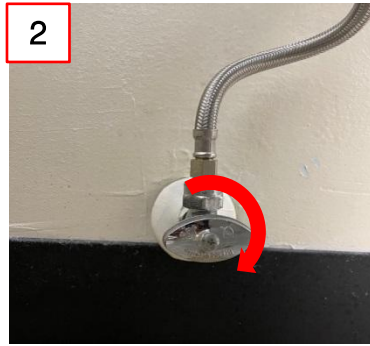
- ① Verify the hot water temperature setting on the sidebar for models 3K and 5K, or on the remote control for models 4K and 6K.
- ② After adjusting the hot water temperature, wait for 3 to 4 minutes and then check if the hot water is functioning properly.

If the water temperature remains unchanged and only cold water is dispensed.

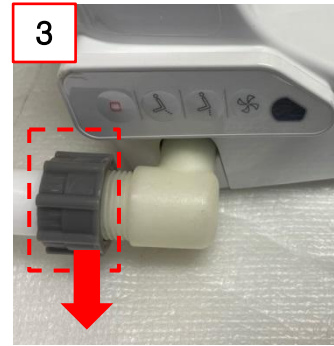
4-1. Replace the MAIN PCB : Detach the bidet



① Unplug the power cord



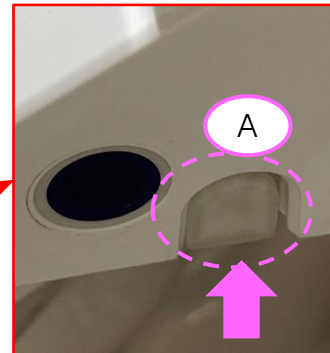
② Close the valve



③ Unscrew the hose



④ While pressing part A on the right side of the bidet, pull the bidet towards the direction indicated by arrow B to detach it

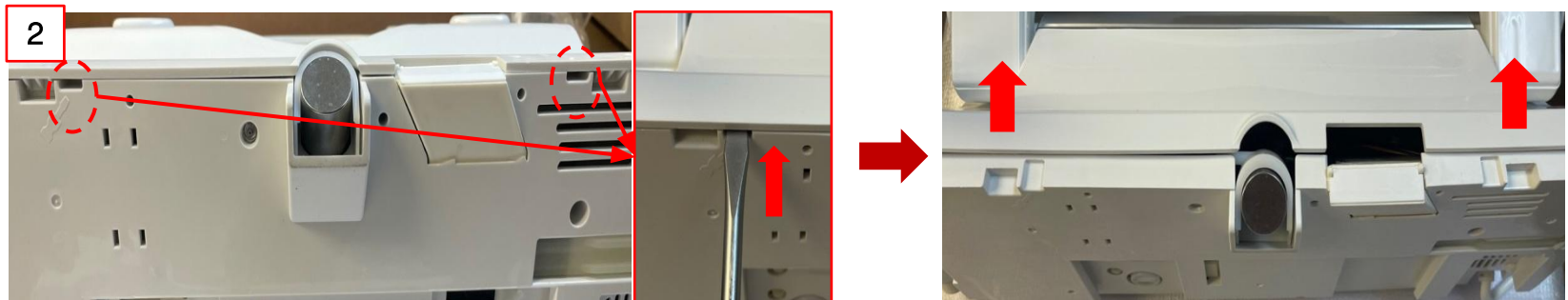


If the water temperature remains unchanged and only cold water is dispensed.

4-2. Replace the MAIN PCB : Open the cover base



① Use a driver to remove the 2 screws on the back.



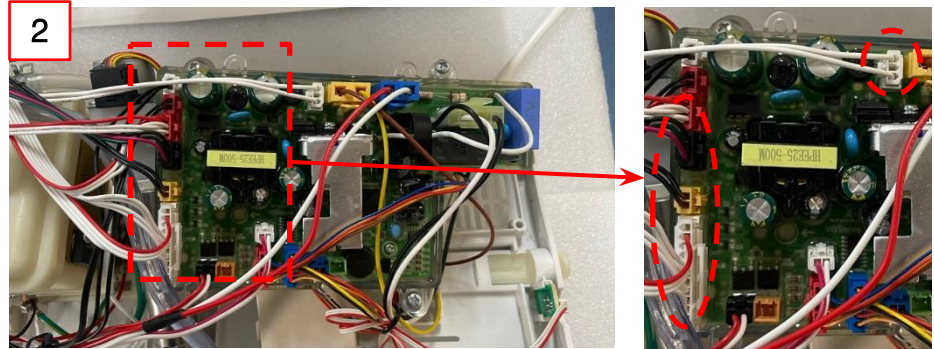
② Insert a flat-head screwdriver into the indicated area and lift upward to remove the cover base.

If the water temperature remains unchanged and only cold water is dispensed.

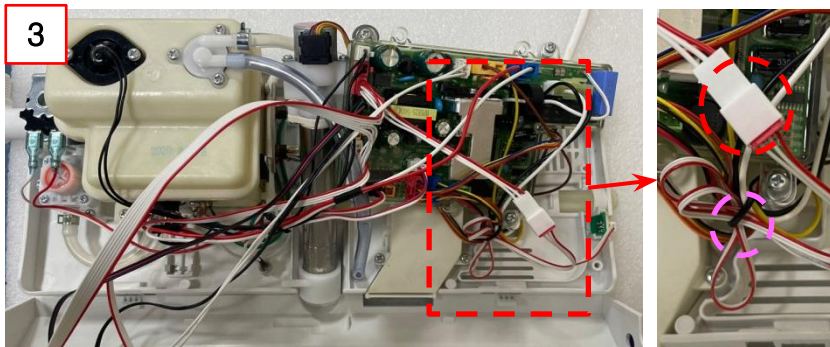
4-3. Replace the MAIN PCB : Detach the housing



① Place the bidet like above



② Disconnect the harness of the MAIN PCB connected to the seat.

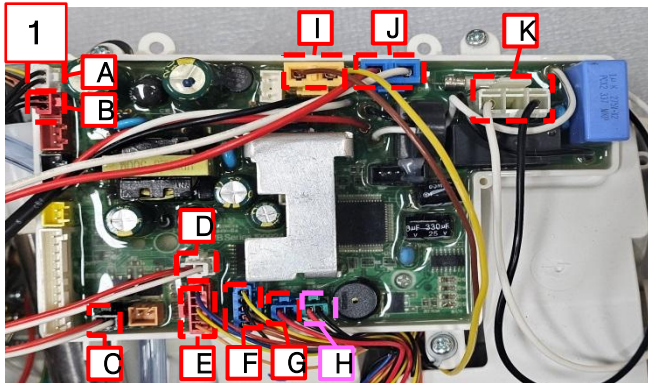


③ Disconnect the harness of SIDE IR.

※ 6K only

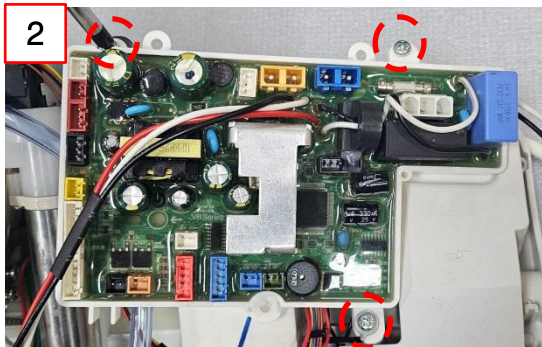
If the water temperature remains unchanged and only cold water is dispensed.

4-4. Replace the MAIN PCB : Replace the MAIN PCB

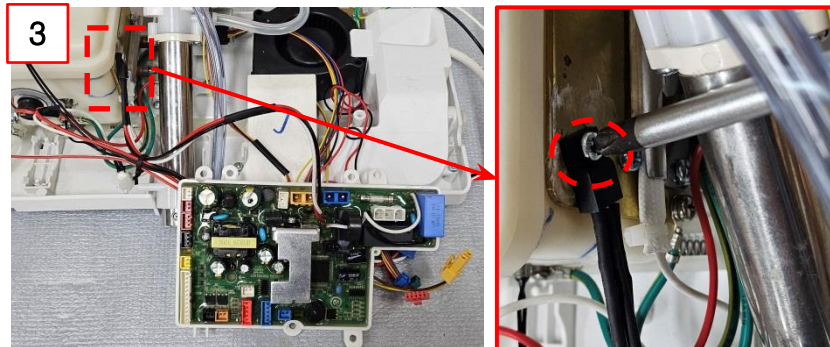


① Disconnect the harness connected to the MAIN PCB.

- A. Water level sensor
- B. Hot water sensor
- C. Input sole
- D. LED lights
- E. Nozzle motor
- F. Flow motor
- G. Dry motor
- H. Deodorizing motor * Applicable only to VB-4000, 4100 models
- I. Dry heater
- J. Hot water heater
- K. Power



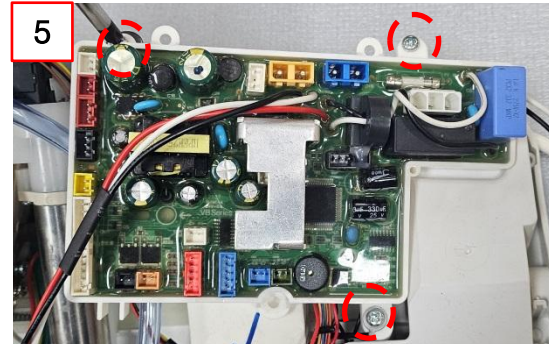
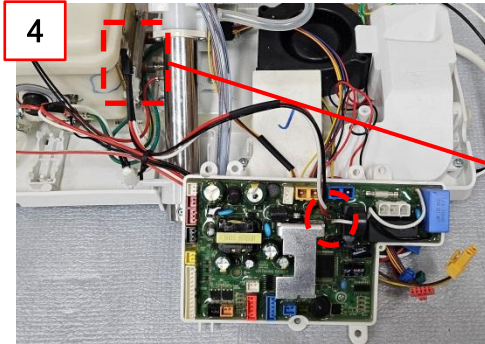
② Disconnect the three screws (3EA) that are combined with the MAIN PCB.



③ Remove the single triac screw (1EA) connected to the TANK.

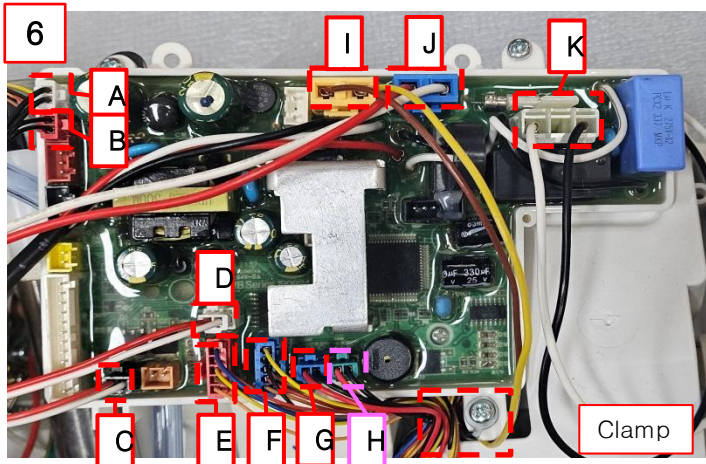
If the water temperature remains unchanged and only cold water is dispensed.

4-5. Replace the MAIN PCB : Replace the MAIN PCB



④ Use screw 1EA to connect the triac of the replaced MAIN PCB with the TANK.

⑤ Fasten 3 screws to the MAIN PCB.



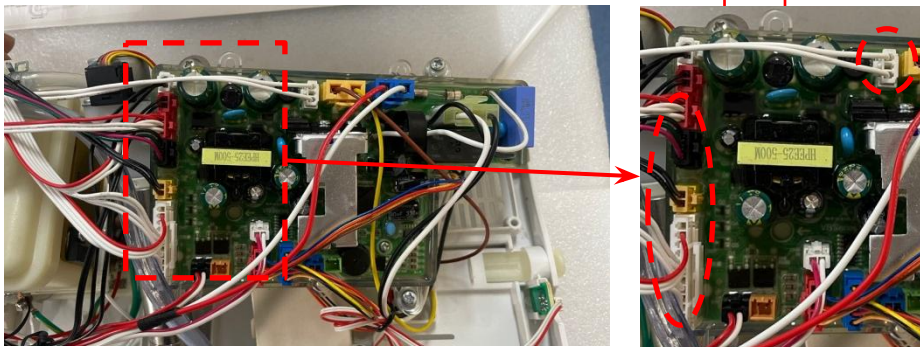
⑥ Connect the harness to the MAIN PCB.

- A. Water level sensor
- B. Hot water sensor
- C. Input sole
- D. LED lights
- E. Nozzle motor
- F. Flow motor
- G. Dry motor
- H. Deodorizing motor * *Applicable only to VB-4000, 4100 models*
- I. Dry heater
- J. Hot water heater
- K. Power

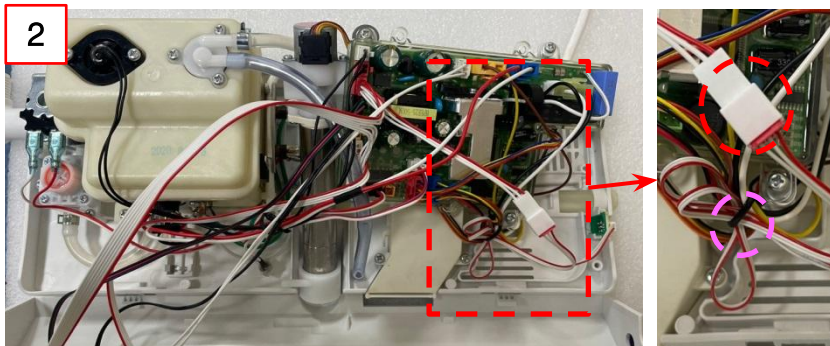
⑦ Tie the harnesses of E, F, G, and H with clamps.

If the water temperature remains unchanged and only cold water is dispensed.

4-6. Replace the MAIN PCB : cover base assembly



① Connect the seating sensor, toilet seat temperature sensor, SIDE CONTROL PCB, and toilet seat heater harness.

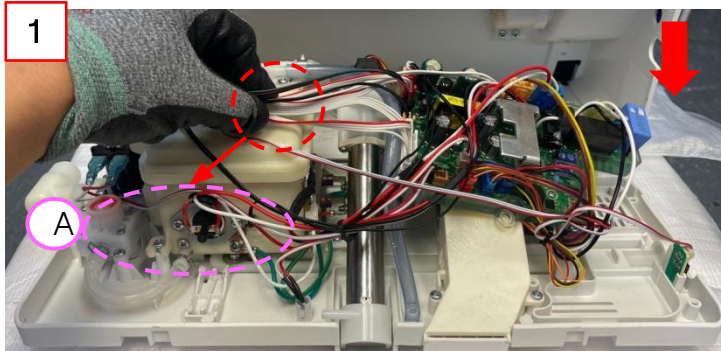


② Connect the harness of SIDE IR.

※ 6K only

If the water temperature remains unchanged and only cold water is dispensed.

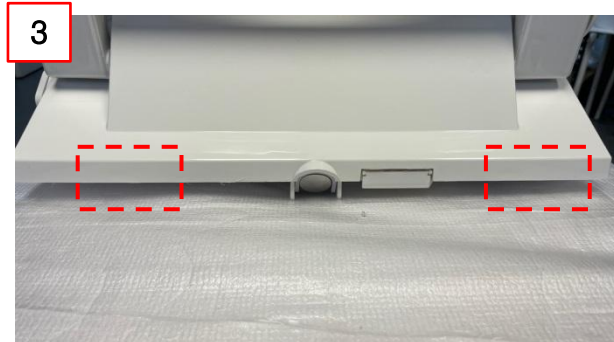
4-7. Replace the MAIN PCB : Close the cover base



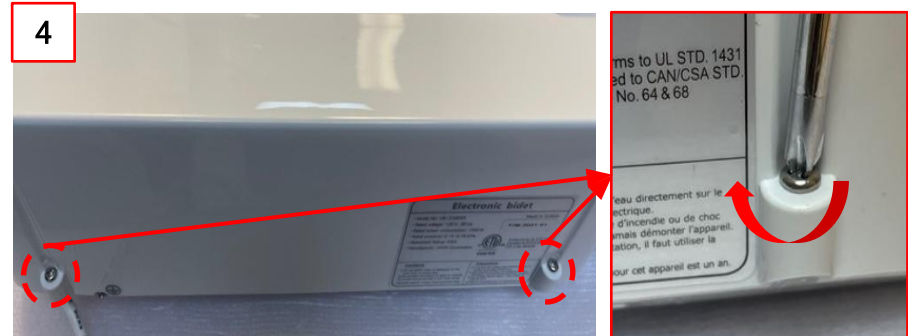
① Pull the harnesses connected to the seat into the space on side A and close the cover base.



② Press the indicated part in the direction of the arrow to fasten it



③ After combining, check the fastening condition.



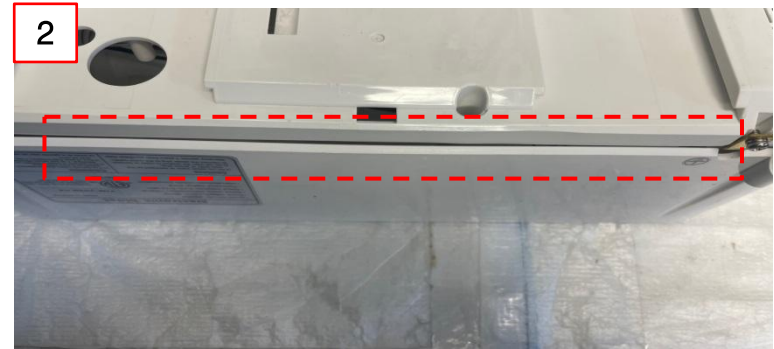
④ Use a driver to tighten the 2 screws on the back.

If the water temperature remains unchanged and only cold water is dispensed.

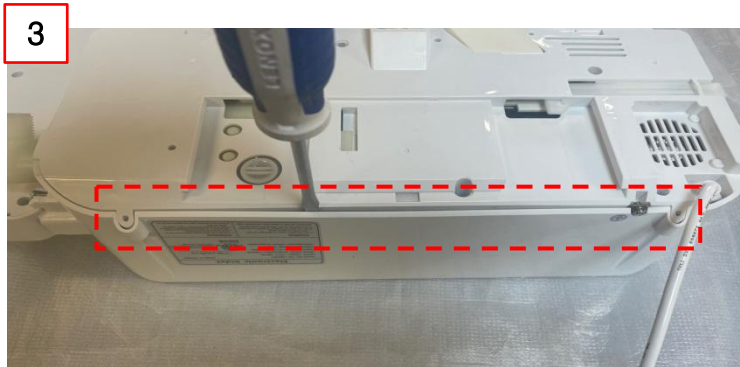
4-8. Replace the MAIN PCB : If the cover base does not close



① Flip the bidet



② Check the connection status of the rear part of the bidet.



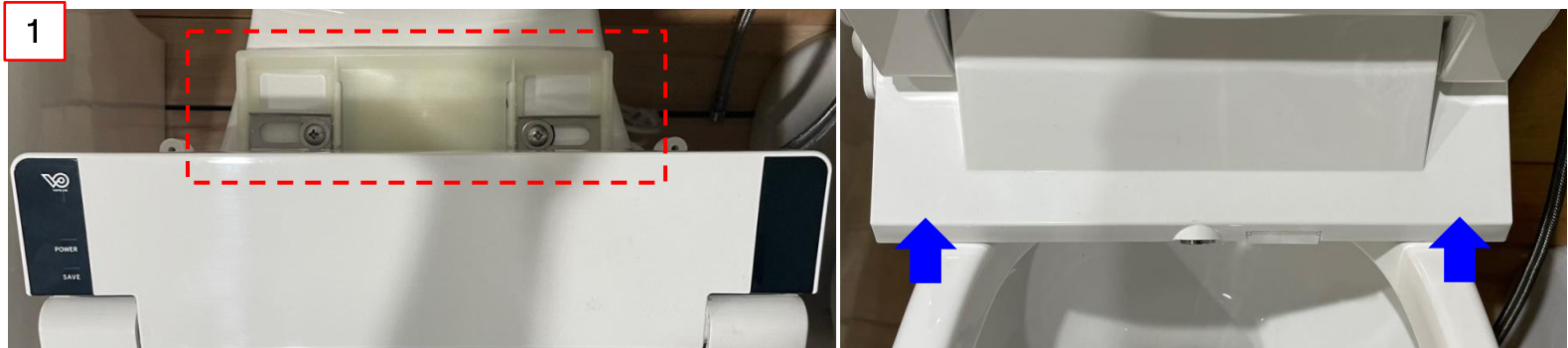
③ Use a tool (flat-blade screwdriver) to secure space in the cover base and then attach it.



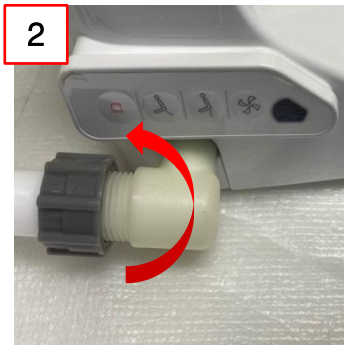
④ Press the indicated part in the direction of the arrow to fasten it.

If the water temperature remains unchanged and only cold water is dispensed.

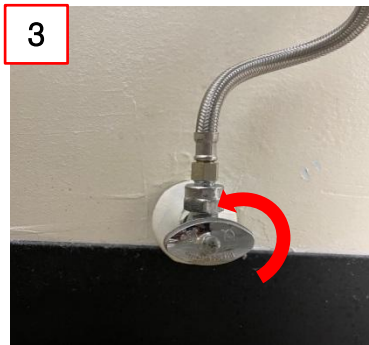
4-9. Replace the MAIN PCB : install the bidet



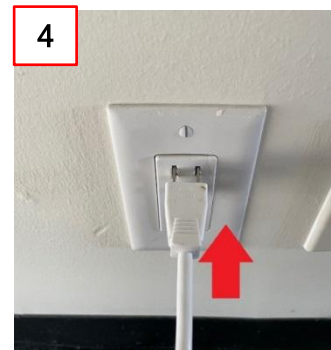
① Attach the bidet to the installed catch plate.



② Fasten the hose



③ Open the valve



④ Plug the cord