

If the nozzle does not come out or go in for bidet toilet seat

1. Reset the power



① Unplug the power cord

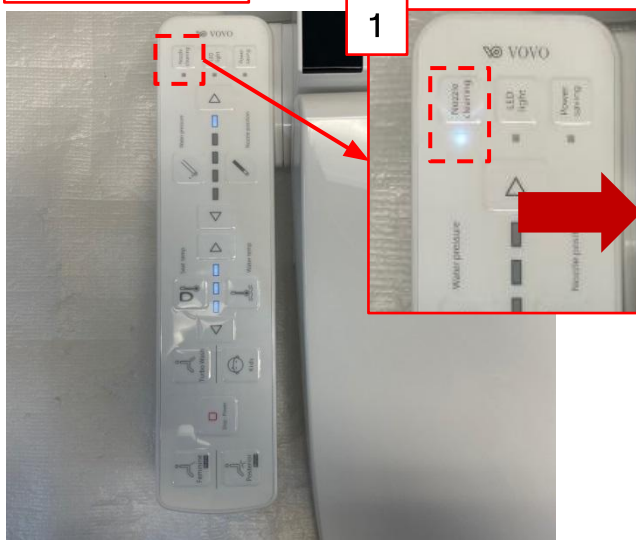


② Plug it back

If the nozzle does not come out or go in for bidet toilet seat

2. Check the nozzle cleaning

3K, 5K models



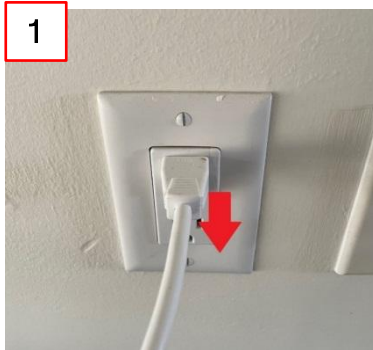
4K, 6K models



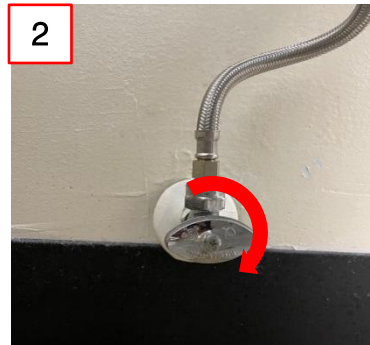
- ① Press the nozzle cleaning button to check the nozzle is coming out or not

If the nozzle does not come out or go in for bidet toilet seat

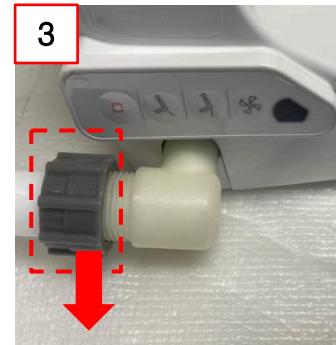
3-1. Nozzle rearrange : Detach the bidet



① Unplug the power cord



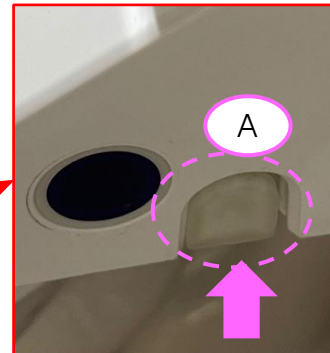
② Close the valve



③ Unscrew the hose

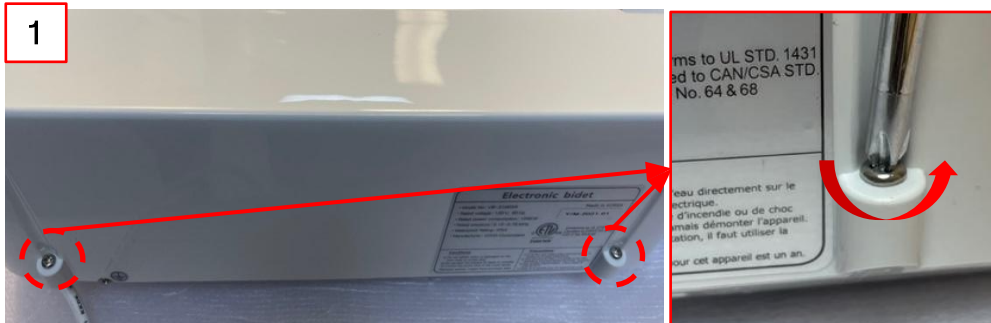


④ While pressing part A on the right side of the bidet, pull the bidet in the direction of arrow B to separate it.

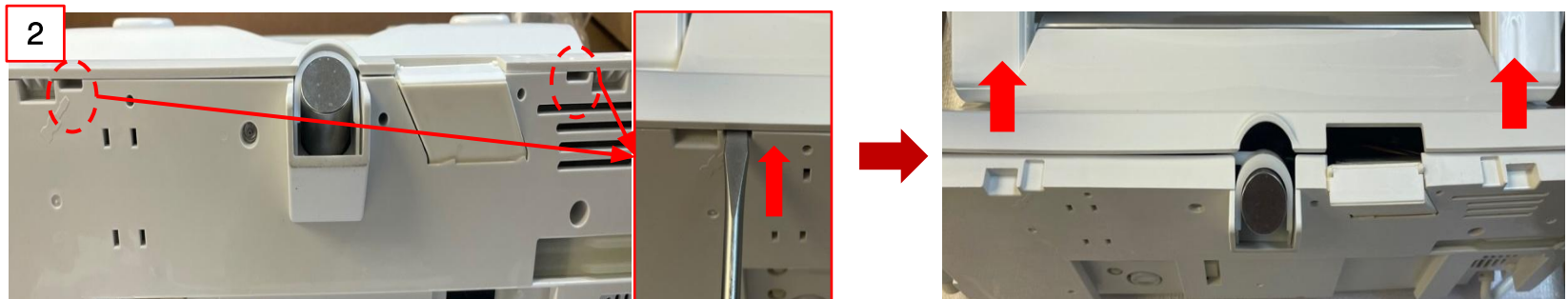


If the nozzle does not come out or go in for bidet toilet seat

3-2. Nozzle rearrange : Open the cover base



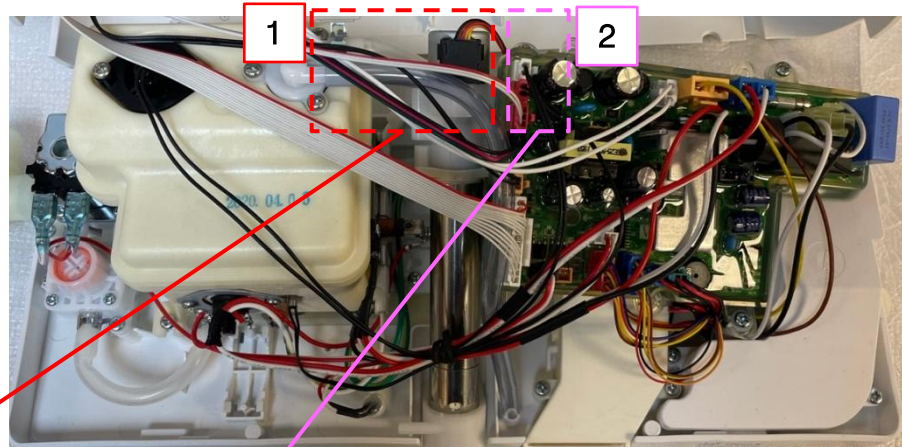
① Use a driver to remove the 2 screws on the back.



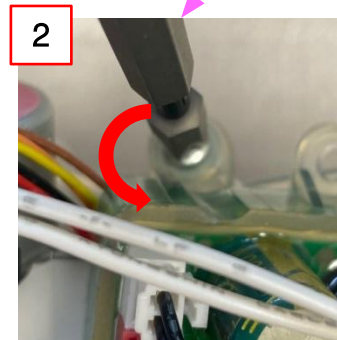
② Insert a flat-head screwdriver into the indicated area and lift upward to remove the cover base.

If the nozzle does not come out or go in for bidet toilet seat

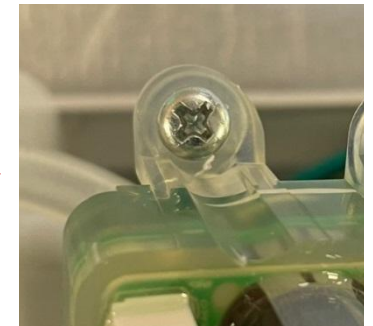
3-3. Nozzle rearrange : Rearrange the nozzle and add washer



① Check whether the nozzle hose is caught on the MAIN PCB.

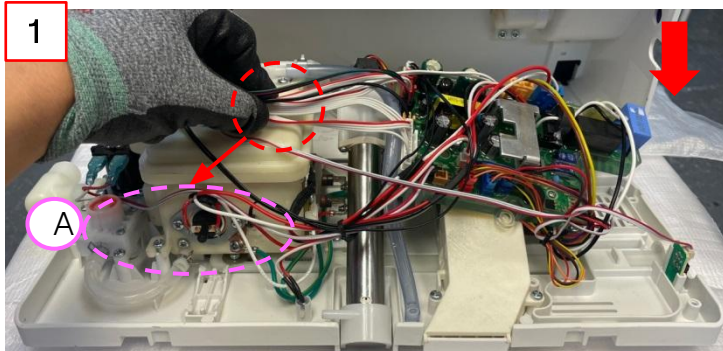


② Separate the screws of the MAIN PCB, insert a washer between them, and reassemble.



If the nozzle does not come out or go in for bidet toilet seat

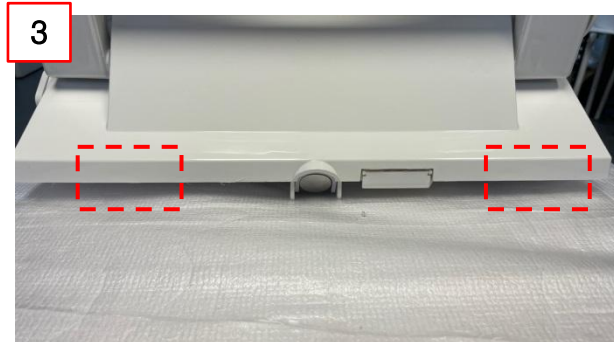
3-4. Nozzle rearrange : Close the cover base



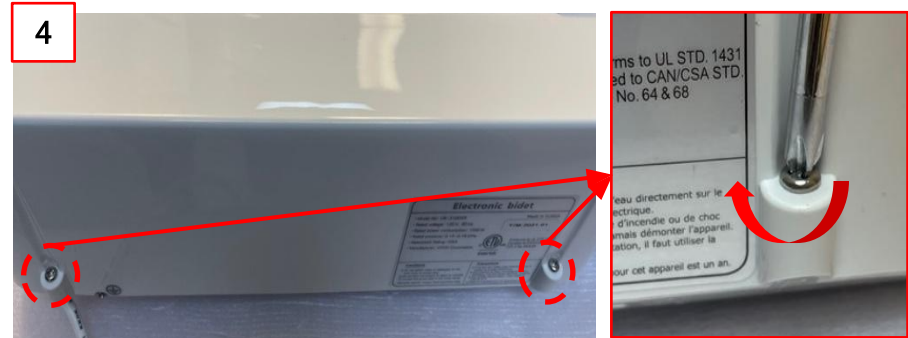
① Pull the harnesses connected to the seat into the space on side A and close the cover base.



② Press the indicated part in the direction of the arrow to fasten it.



③ After combining, check the fastening condition.



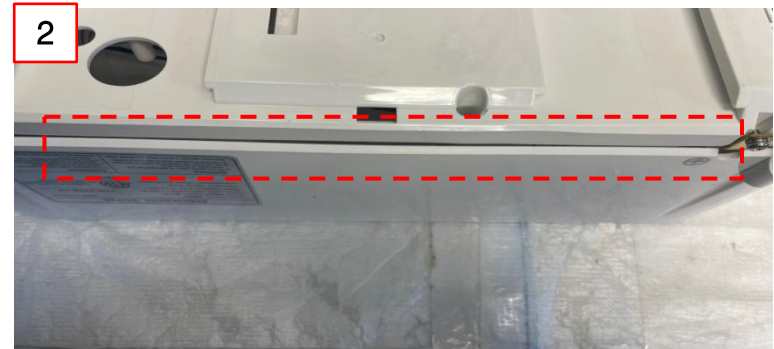
④ Use a driver to tighten the 2 screws on the back.

If the nozzle does not come out or go in for bidet toilet seat

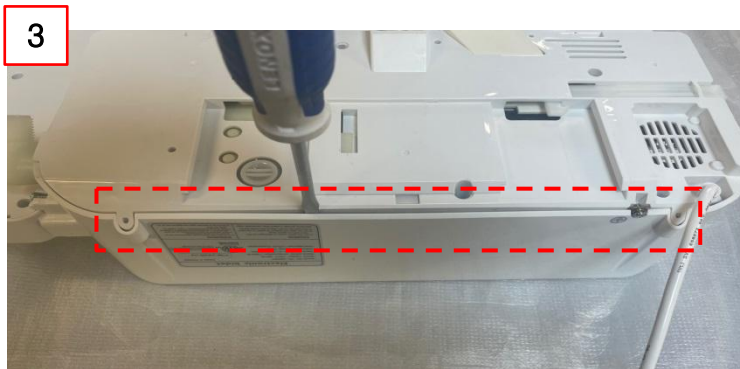
3-5. Nozzle rearrange :If the cover base does not close



① Flip the bidet



② Check the connection status of the rear part of the bidet.



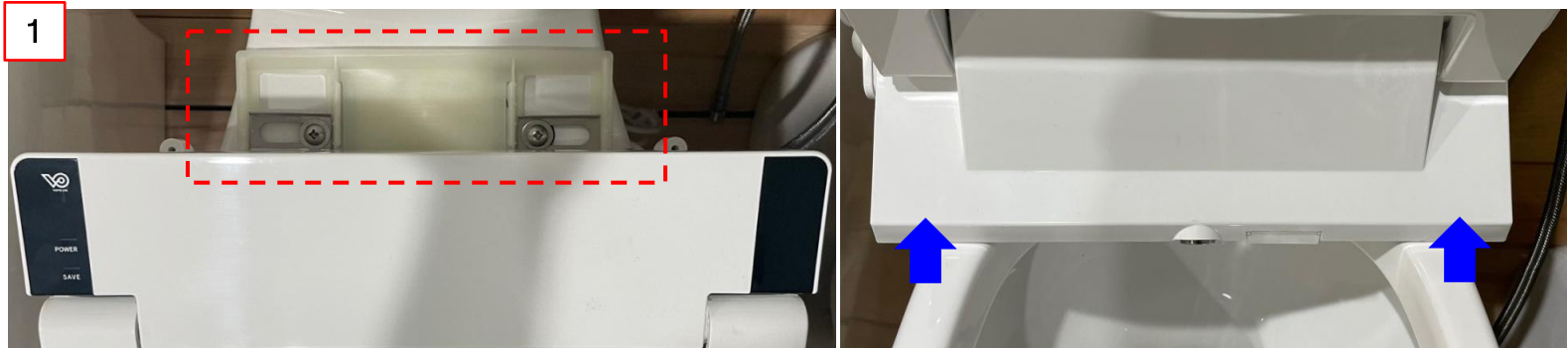
③ Use a tool (flat-blade screwdriver) to secure space in the cover base and then attach it.



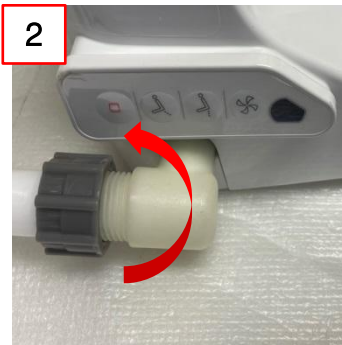
④ Press the indicated part in the direction of the arrow to fasten it.

If the nozzle does not come out or go in for bidet toilet seat

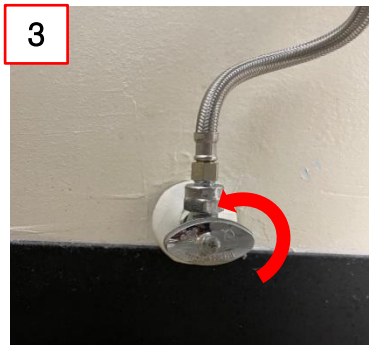
3-6. Nozzle rearrange : Install the bidet



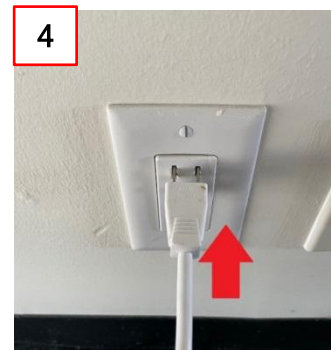
① Attach the bidet to the installed catch plate.



② Fasten the hose



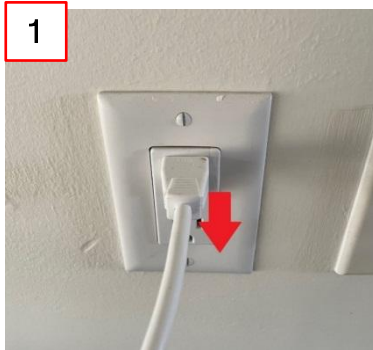
③ Open the valve



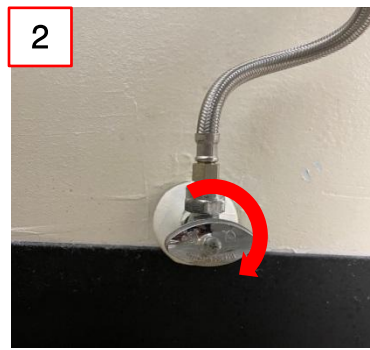
④ Plug the cord

If the nozzle does not come out or go in for bidet toilet seat

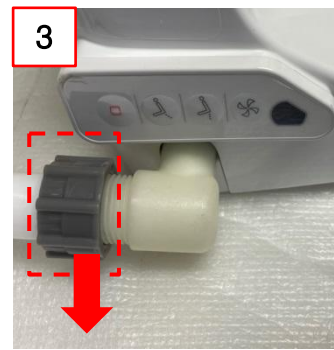
4-1. Replace the MAIN PCB : Detach the bidet



① Unplug the power cord



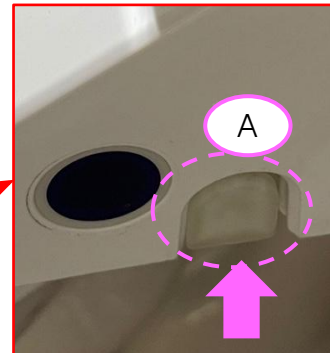
② Close the valve



③ Unscrew the hose

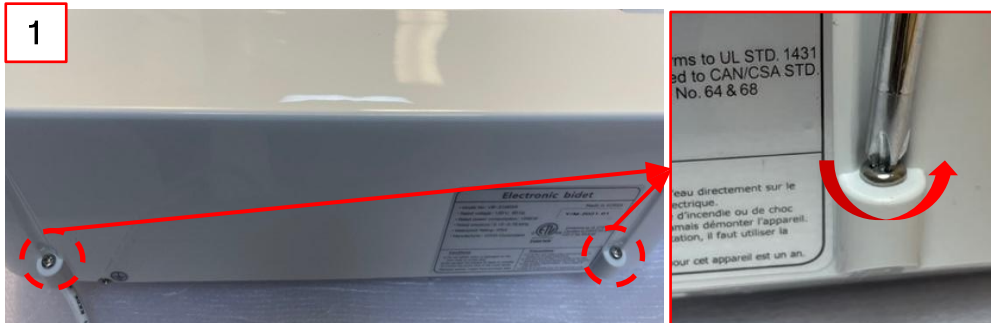


④ While pressing part A on the right side of the bidet, pull the bidet in the direction of arrow B to separate it.

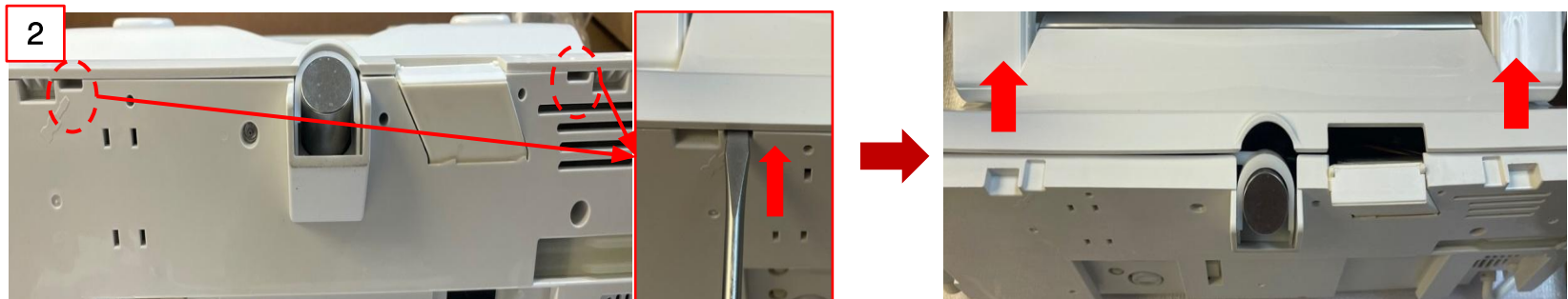


If the nozzle does not come out or go in for bidet toilet seat

4-2. Replace MAIN PCB : Open the cover base



① Use a driver to remove the 2 screws on the back.



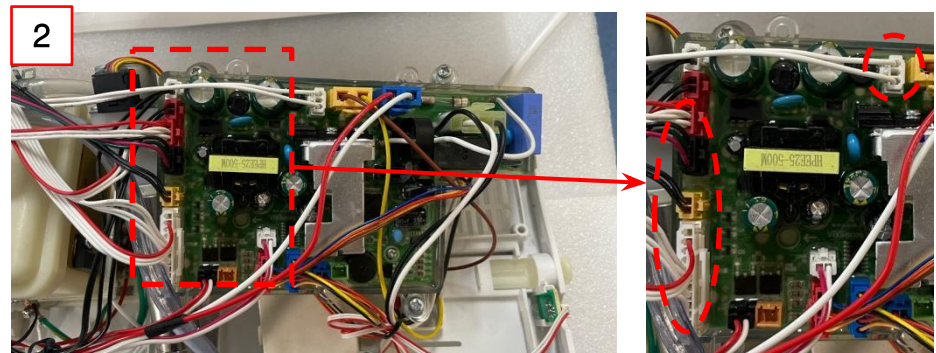
② Insert a flat-head screwdriver into the indicated area and lift upward to remove the cover base.

If the nozzle does not come out or go in for bidet toilet seat

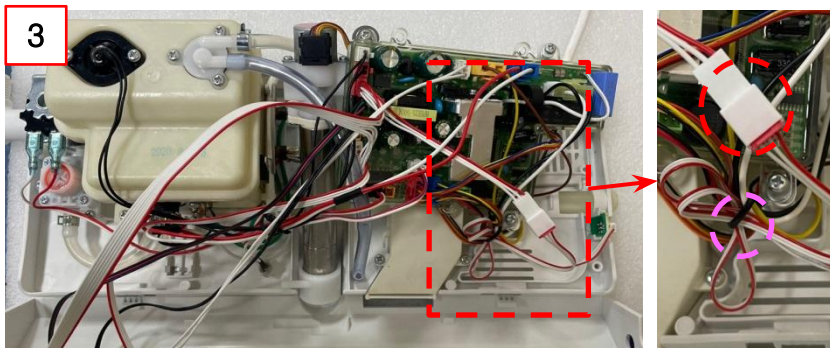
4-3. Replace the MAIN PCB : Detach the housing



① Place the bidet like above



② Disconnect the harness of the MAIN PCB connected to the seat.

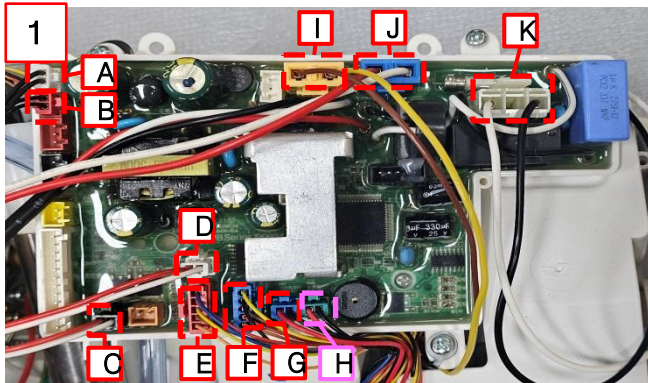


③ Disconnect the harness of SIDE IR.

※ 6K only

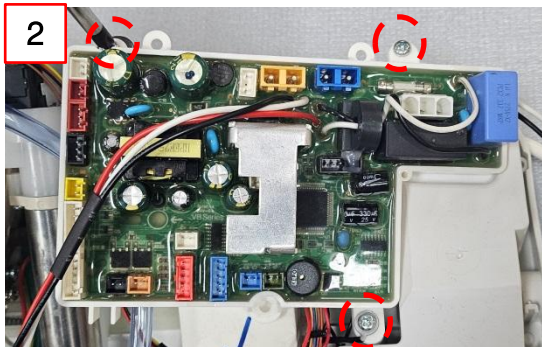
If the nozzle does not come out or go in for bidet toilet seat

4-4. Replace MAIN PCB : Replace MAIN PCB

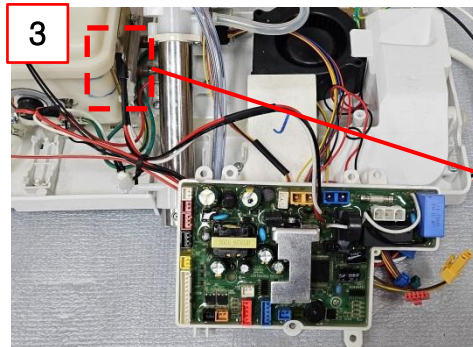


① Disconnect the harness connected to the MAIN PCB.

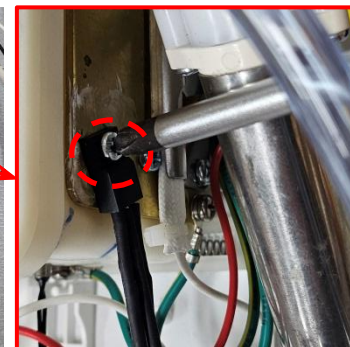
- A. Water level sensor
- B. Hot water sensor
- C. Input sole
- D. LED lights
- E. Nozzle motor
- F. Flow motor
- G. Dry motor
- H. Deodorizing motor * Applicable only to VB-4000, 4100 models
- I. Dry heater
- J. Hot water heater
- K. Power



② Remove the screws 3EA connected to the MAIN PCB..

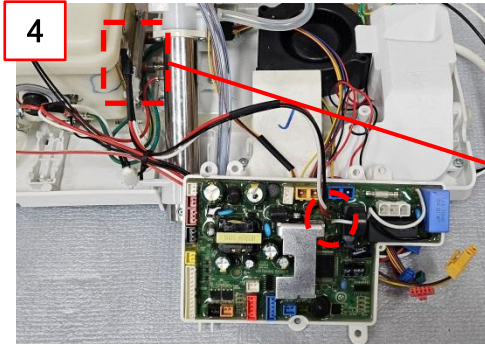


③ Remove the triac screw 1EA connected to the TANK.

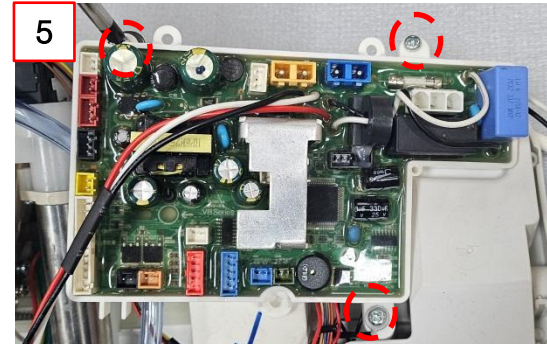


If the nozzle does not come out or go in for bidet toilet seat

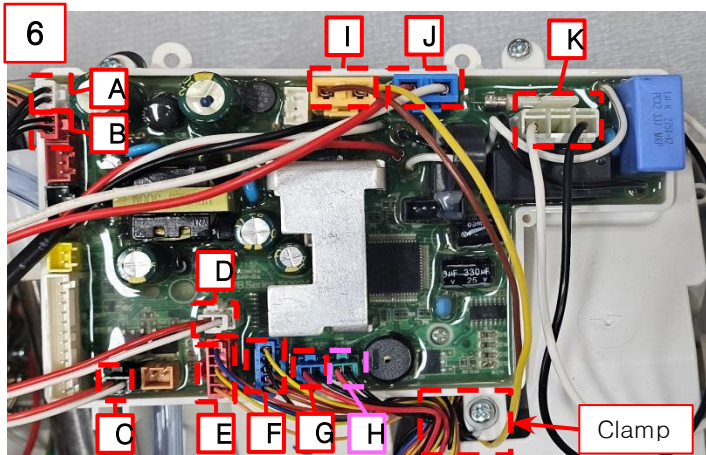
4-5. Replace MAIN PCB : Replace MAIN PCB



④ Use screw 1EA to connect the triac of the replaced MAIN PCB with the TANK.



⑤ Fasten 3 screws to the MAIN PCB.



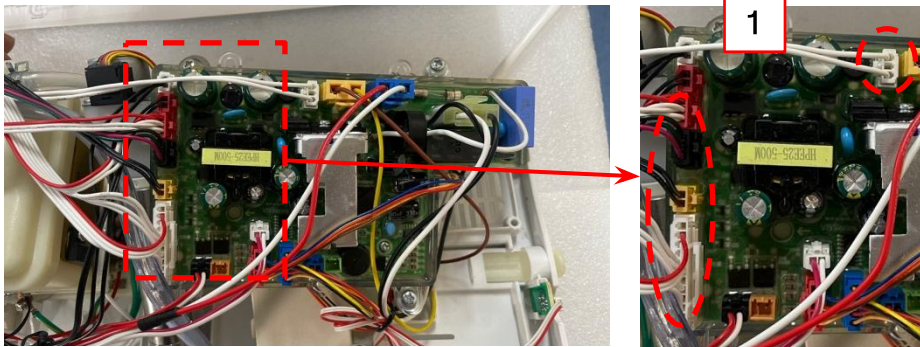
⑥ Connect the harness to the MAIN PCB.

- A. Water level sensor
- B. Hot water sensor
- C. Input sole
- D. LED lights
- E. Nozzle motor
- F. Flow motor
- G. Dry motor
- H. Deodorizing motor * *Applicable only to VB-4000, 4100 models*
- I. Dry heater
- J. Hot water heater
- K. Power

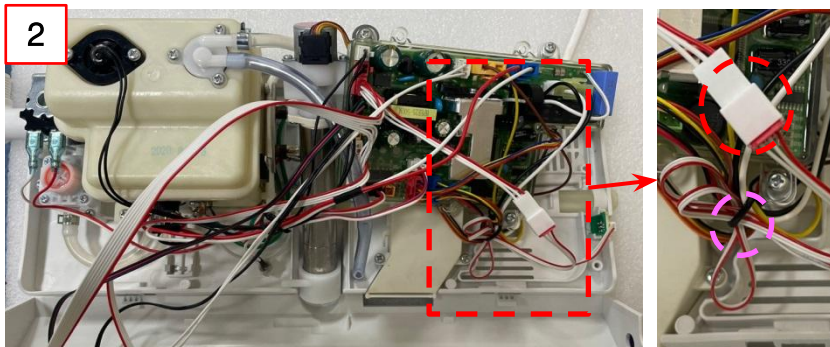
⑦ Tie the harnesses of E, F, G, and H with clamps.

If the nozzle does not come out or go in for bidet toilet seat

4-6. MAIN PCB replacement cover base assembly



① Connect the seating sensor, toilet seat temperature sensor, SIDE CONTROL PCB, and toilet seat heater harness.

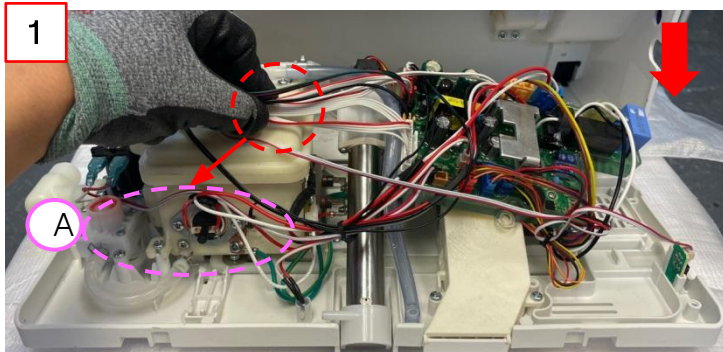


② Connect the harness of SIDE IR.

※ 6K only

If the nozzle does not come out or go in for bidet toilet seat

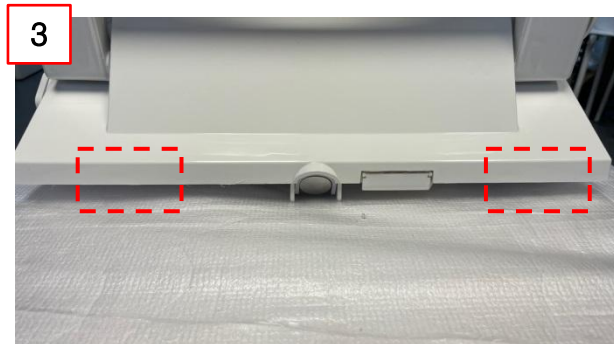
4-7. Replace MAIN PCB : Close cover base



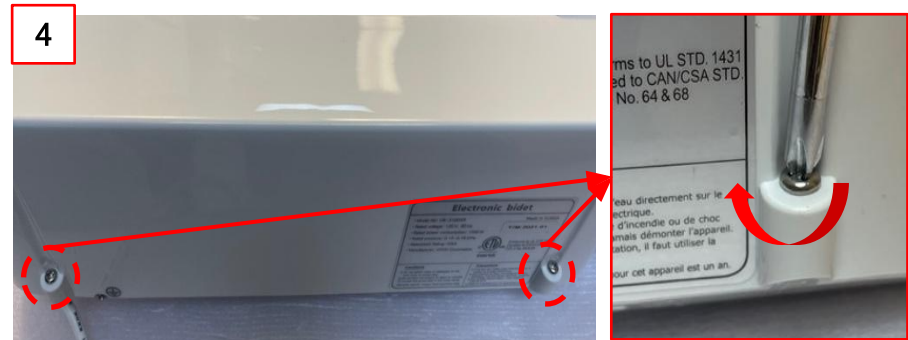
① Pull the harnesses connected to the seat into the space on side A and close the cover base.



② Press the indicated part in the direction of the arrow to fasten it



③ After combining, check the fastening condition.



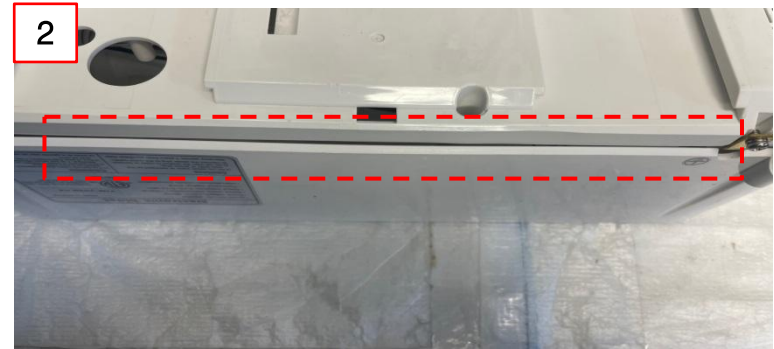
④ Use a driver to tighten the 2 screws on the back.

If the nozzle does not come out or go in for bidet toilet seat

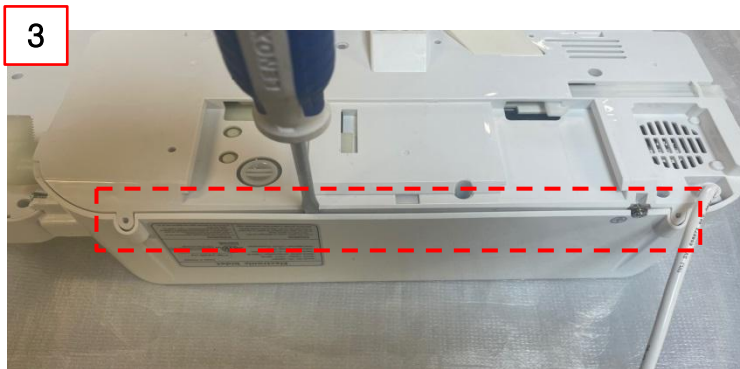
4-8. Replace MAIN PCB : If the cover base does not close



① Flip the bidet



② Check the connection status of the rear part of the bidet.



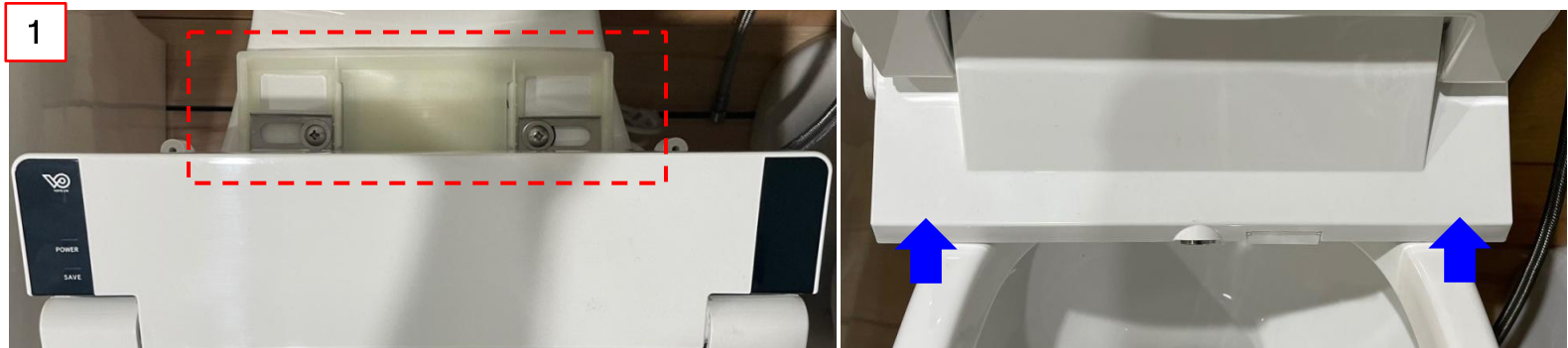
③ Use a tool (flat-blade screwdriver) to secure space in the cover base and then attach it.



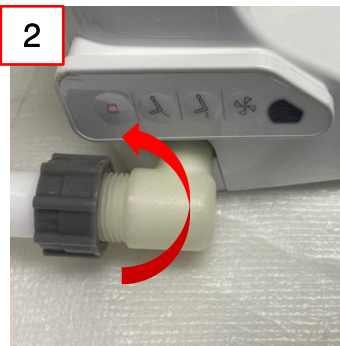
④ Press the indicated part in the direction of the arrow to fasten it.

If the nozzle does not come out or go in for bidet toilet seat

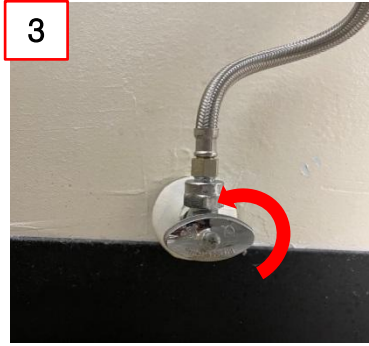
4-9. Replace MAIN PCB : Install the bidet



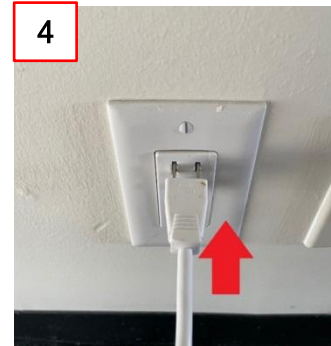
① Attach the bidet to the installed catch plate.



② Fasten the hose



③ Open the valve



④ Plug the cord