

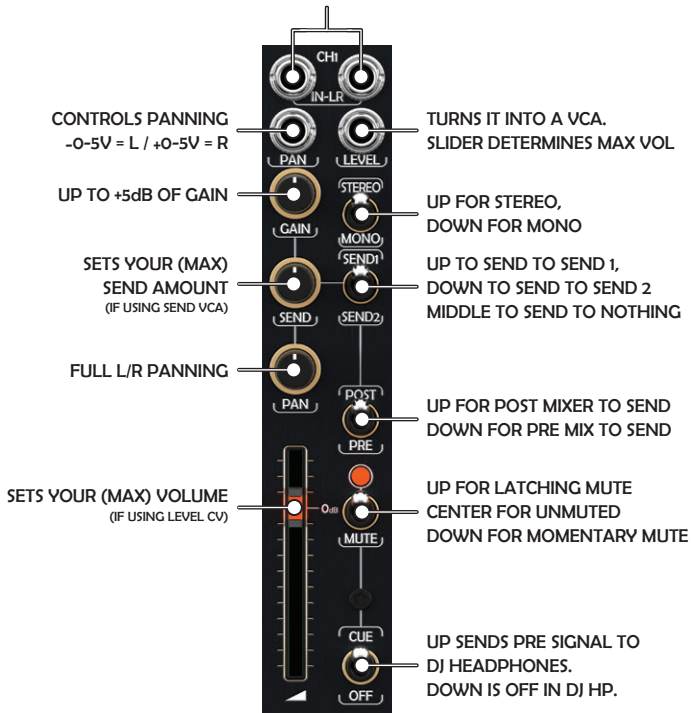
# VIP MIXER SERIES



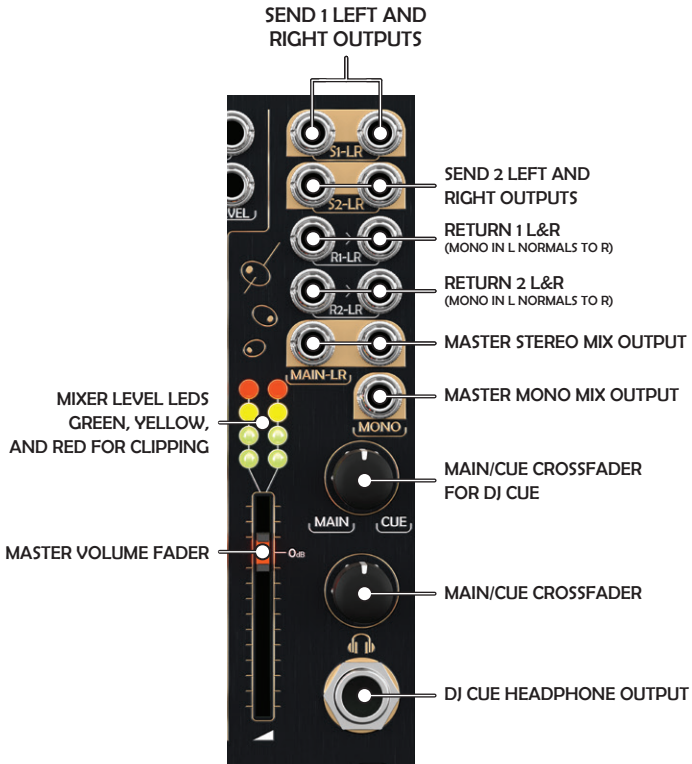
INSTRUCTION MANUAL

# SINGLE CHANNEL BREAKDOWN

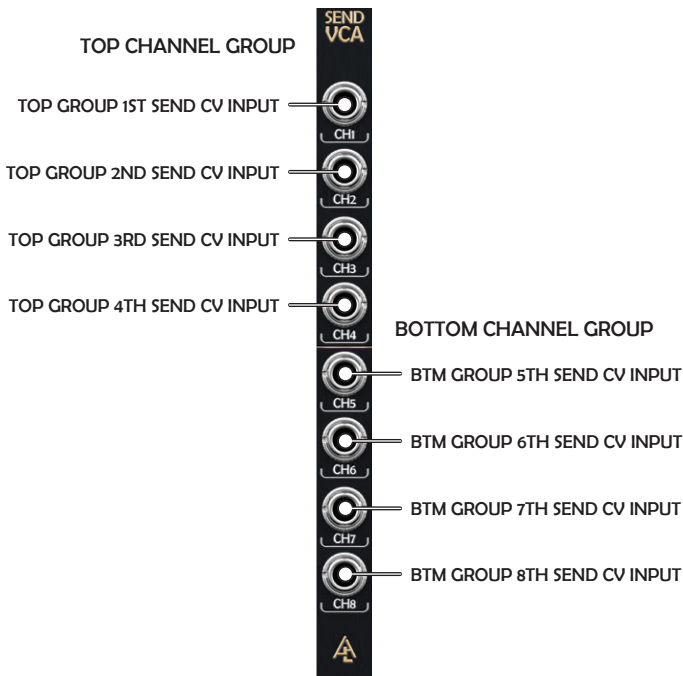
## LEFT AND RIGHT STEREO INPUTS OR 1-2 MONO INPUTS



# BARTENDER MASTER PANEL

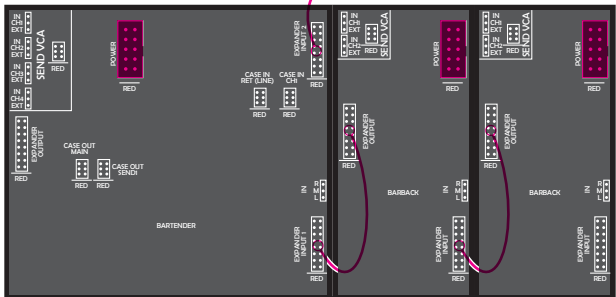


# SEND VCA



THE SEND KNOB ON EACH CHANNEL ACTS AS A “MAX VOLUME” KNOB WHILE A CABLE IS INSERTED INTO IT’S SEND VCA CHANNEL. POSITIVE VOLTAGE WILL OPEN UP THE VCA AND WILL HIT THE “MAX VOLUME” LEVEL AT 5V.

ADD TWO MORE INTO EXPANDER INPUT 2



## CONNECTING BARBACK

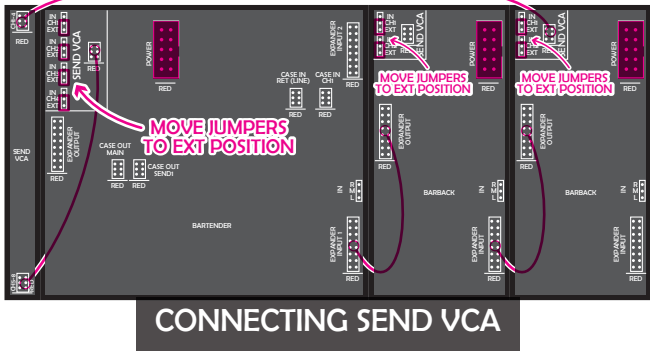
TO CONNECT BARBACK/S TO BARTENDER, START WITH “EXPANDER INPUT 1” ON BARTENDER. CONNECT “EXPANDER INPUT 1” TO “EXPANDER OUTPUT” OF THE FIRST BARBACK, BE AWARE OF RED STRIPE ORIENTATION SO THAT IT MATCHES THE RED INDICATOR ON THE BACK OF THE MODULES.

IF CONNECTING A SECOND BARBACK, CONNECT THE “EXPANDER INPUT” FROM BARBACK 1 TO THE “EXPANDER OUTPUT” OF THE SECOND BARBACK.

IF CONNECTING A THIRD AND FOURTH BARBACK, FOLLOW THE SAME STEPS AS ABOVE, BUT USING “EXPANDER INPUT 2” ON BARTENDER.

YOU CAN ALSO CONNECT UP TO TWO ADDITIONAL BARTENDERS INSTEAD OF THE BARBACKS BY CONNECTING THE “EXPANDER OUTPUT” OF EACH OF THE ADDITIONAL MODULES TO “EXPANDER INPUT 1/2” OF THE FIRST BARTENDER.

LASTLY DON'T FORGET TO PLUG IN THE POWER RIBBON ON ALL MODULES USED.



## CONNECTING SEND VCA

TO CONNECT TO THE SEND VCA MODULE, FIRST FIND THE JUMPERS ON THE BACK OF EACH MODULE AND CHANNEL YOU WOULD LIKE ROUTED TO SEND VCA, AND MOVE THEM FROM THE “IN” POSITION TO THE “EXT” POSITION.

FOR BARTENDER, SIMPLY PLUG THE 6 PIN RIBBON CABLE (RED STRIPE DOWN) FROM THE SEND VCA PINS TO EITHER THE TOP OR BOTTOM PINS ON SEND VCA (RED STRIPE DOWN).

FOR BARBACK/S, USE THE “SEND VCA” PINS FROM THE FURTHEST BARBACK FROM BARTENDER AND PLUG INTO EITHER THE TOP OR BOTTOM PINS ON SEND VCA (RED STRIPE DOWN).