

Let's get started.

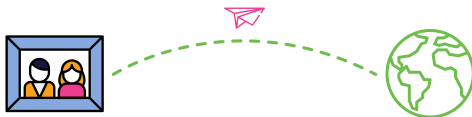


CONNECTED PHOTO FRAME

l:uvlink

APART BUT NEVER ALONE

About LuvLink®



“Light up the life of your loved ones”

Our mission

Our range of products is designed to simply bring you and your loved ones together. Although you may be apart – our goal is that you may never feel alone!

About Connected Photo Frames

Share photos and short videos with your loved ones via our unique Connected Photo Frame! No matter where you are in the world, you can share your precious memories with your friends & family in just a matter of seconds.

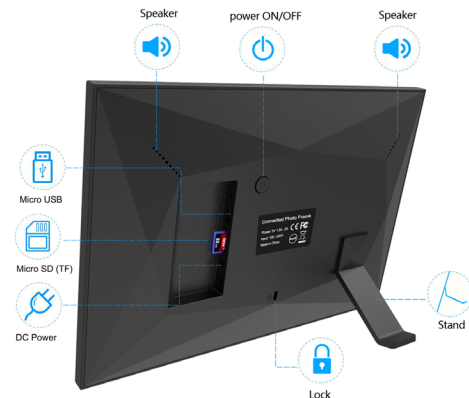
Why us?

We want your experience to be second to none! We pride ourselves on great products and even better service.

- Live online support
- 12-month warranty
- 1000s of happy customers
- Every product tested for quality assurance

Setting up your frame

- 1 Attach leg on the rear (either portrait or landscape)
- 2 Connect the power supply
- 3 Choose language & timezone
- 4 Connect to your wifi network
- 5 Name your Connected Photo Frame



Install the app

- 1 Anyone who wants to send photos will need to download the Frameo App on their phone
- 2 On the photo frame press "Add Friend"
- 3 On the app press "Add Friend" and enter the code on the photo frame
- 4 Send photos from within the Frameo App or just share them from your favorite app

Need more help? Please don't hesitate to contact us by email at hello@luvlink.com

Using your frame

- 1 Swipe left and right to scroll through photos
- 2 Tap the screen to hide photo or adjust the photo
- 3 Press settings to manage photos, friends, notifications, volume & more
- 4 Press gallery to view all your photos as thumbnails

Need more help?

<https://help.luvlink.com>

Additional features

- 1 Backup photos to and from with a micro SD card inserted at the back of the device
- 2 Transfer photos directly to and from with a USB device
- 3 Reset the device by pressing the reset button on the back of the device

FAQs

Q. How much storage does the device have?

A. The device comes with 16GB of built-in storage.

Q. Are the photos stored on the cloud?

A. No the photos are only located the device. Remember you can back up via SD card.

Q. My frame says it's "offline"?

A. This can be because your frame is too far from the router or the wifi signal is having internet issues.

