

BODYTORQUE

2021

**BODY
TORQUE**

**Enrolment
'My Club' Kits**

CLUB BRANDED MERCHANDISE

Offer your members some Club branded merch as part of your Enrolment Fee or simply give as a giveaway!

This is a great way to..

- » Promote Your Brand Club
- » Generate Pride in your Team
- » Foster Team Unity & Spirit
- » Motivate the Team to work together

We have highlighted some of our key offerings which work great in this space, enquire now!



EMBELLISHMENT OPTIONS



SCREEN PRINTING

- THE MOST COMMON METHOD FOR TEXTILE PRINTING.
- CAN BE APPLIED TO MOST FABRICS AND PROVIDES LONG LASTING PRINT & ACCURATE COLOUR.
- SCREEN PRINTING IS THE MOST SUITABLE FOR DESIGNS CONSISTING OF FEW COLOURS AND NOT FEATURING TOO MUCH DETAIL



EMBROIDERY

- PROVIDES A QUALITY GARMENT FINISH AND IS THE MOST LONG LASTING METHOD.
- THIS METHOD ALLOWS MULTIPLE COLOURS PER LOGO WITHOUT ANY EXTRA COSTS, AND WORKS ON HEAVIER FABRIC TYPES.



HEAT TRANSFER

- PRESSING METHOD USING HIGH TEMPERATURE AND PRESSURE
 - ALLOWS FINE LOGO AND GRADIENT COLOURS
- LESS DURABILITY THAN SCREEN PRINTING AND EMBROIDERY



SUBLIMATION

- MOST POPULAR METHOD
- TECHNIQUE USES INK OR DYE TO TRANSFER ARTWORK ONTO GARMENT
- FULL CREATIVE FREEDOM, VERSATILE TO ACHIEVE EXACT COLOUR AND DESIGN

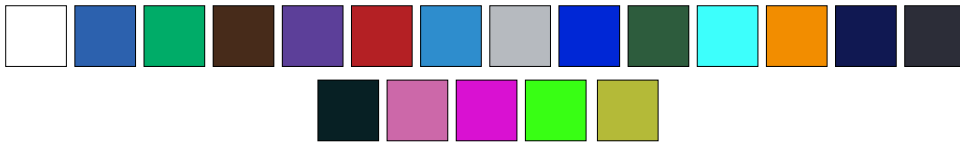


APPAREL

CORE STARTER TEE



AVAILABLE COLOURS



STYLE : MEN (T10012) | WOMEN (T10022) | YOUTH (T10032)
MATERIAL : 100% PREMIUM COMBED, 185GSM

Twin needle sleeve and hem, Ribbed elastane collar for stretch and shape recovery,
Taped neck for superior style and shape

PREMIUM STARTER TEE



AVAILABLE COLOURS



STYLE : ADULTS (7PNFT) | YOUTH (7PNFT)
MATERIAL : 100% POLYESTER, 160GSM

Pique knit fabric, moisture wicking fabric designed to help keep you cool and dry, Easy care fabric, Quick drying. Complies with standard AS|NZS 4399:1996 and AS|NZS 4399:2017 for UPF protection

PREMIUM STARTER SINGLET



AVAILABLE COLOURS



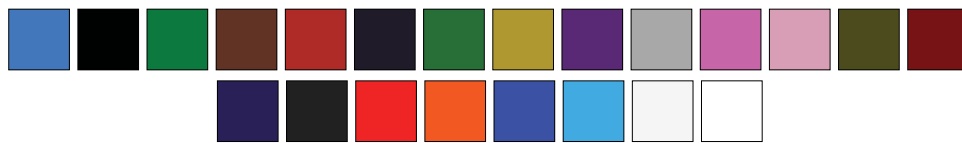
STYLE : MEN (7PS1) | WOMEN (7PS1) | YOUTH (7KPO)
MATERIAL : 100% POLYESTER, 160GSM

Twin needle sleeve and hem, Ribbed elastane collar for stretch and shape recovery,
Taped neck for superior style and shape

STARTER POCKET HOODIE



AVAILABLE COLOURS



STYLE : MEN (TP212H) | WOMEN (TH22UN) | YOUTH (TH22UN)
MATERIAL : POLY | COTTON, 320 GSM

Fleece, hood design with front pocket

STARTER CREW JUMPER



AVAILABLE COLOURS



STYLE : ADULTS (TP2125) | YOUTH (F700KS)
MATERIAL : POLY | COTTON, 320 GSM

Brushed fleece crew neck, very fine and soft, offers superior screen printing results



ACCESSORIES

CORE STARTER TOTE BAG



AVAILABLE COLOURS



MATERIAL : NON WOVEN FABRIC, 80GSM
SKU: FTC0609

H 420 mm x W 380mm (excludes handles). Handle Length: 510mm.

PREMIUM STARTER TOTE BAG



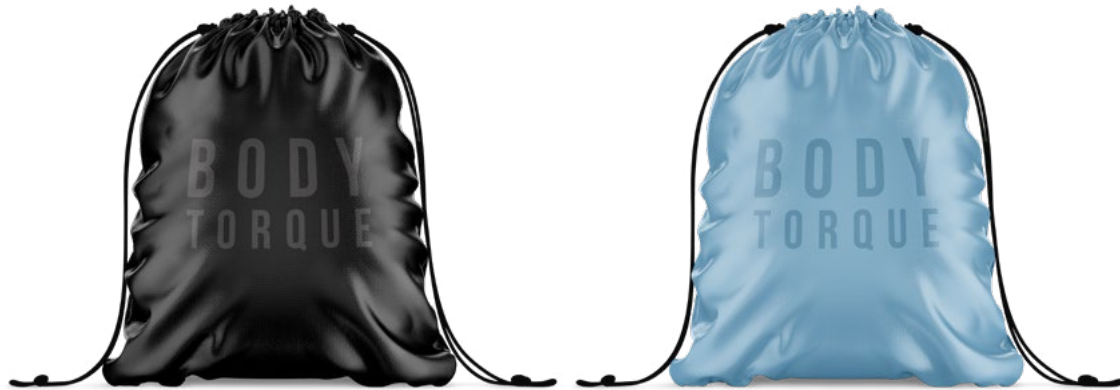
AVAILABLE COLOURS



MATERIAL : POLYCOTTON CANVAS, 300 GSM
SKU: G4037

W 29cm x H 32cm x D 11cm

CORE STARTER DRAWSTRING BACKPACK



AVAILABLE COLOURS



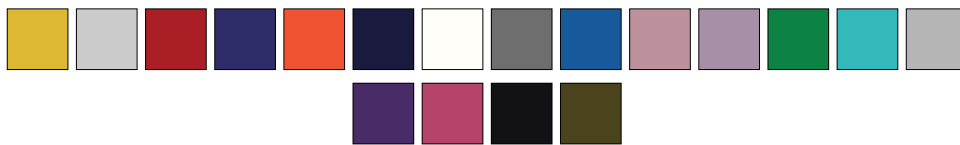
MATERIAL : NON WOVEN FABRIC, 80GSM
SKU: FTC1208

W 315mm x H 425mm

CORE STARTER BPA FREE DRINK BOTTLE



AVAILABLE COLOURS



MATERIAL : PLASTIC
SKU: FTC7020

75mm x 220mm H. 750 ml. Screw sealing lid ensures no leaks.

PREMIUM STAINLESS STEEL WATER BOTTLE



AVAILABLE COLOURS



MATERIAL : STAINLESS STEEL
SKU: FPX0020

220mm x 72mm. 500ml capacity. Stainless steel water bottles with an o ring seal screw cap, cap includes a carry handle and convenient pop up sipper.



For enquiries please contact
AMY DE FOREST

Email: adeforest@belgraviports.com.au

Phone: +61 401 070 152

Address: 20 Longstaff Road, Bayswater, Victoria, 3154