

BODYTORQUE

BODYTORQUE

Training Club Kit

2021

CLUB BRANDED TRAINING MERCHANDISE

No matter the sports level, your club and kids deserve premium custom kit.

This is a great way to

- Professionally promote your club
 - Generate pride in your team
 - Strengthen member community
 - Boost club earnings
- Maintain and strengthen your community unity and spirit
 - Turn your Gym into a brand
- Participate in a multi- billion dollar growing fitness merchandise industry
 - Stay competitive in the market
 - Add value to services
 - Provide an easy and accessible solution for parents

Check out our latest product offerings throughout this catalogue.



EMBELLISHMENT OPTIONS



SCREEN PRINTING

- THE MOST COMMON METHOD FOR TEXTILE PRINTING.
- CAN BE APPLIED TO MOST FABRICS AND PROVIDES LONG LASTING PRINT & ACCURATE COLOUR.
- SCREEN PRINTING IS THE MOST SUITABLE FOR DESIGNS CONSISTING OF FEW COLOURS AND NOT FEATURING TOO MUCH DETAIL



EMBROIDERY

- PROVIDES A QUALITY GARMENT FINISH AND IS THE MOST LONG LASTING METHOD.
- THIS METHOD ALLOWS MULTIPLE COLOURS PER LOGO WITHOUT ANY EXTRA COSTS, AND WORKS ON HEAVIER FABRIC TYPES.



HEAT TRANSFER

- PRESSING METHOD USING HIGH TEMPERATURE AND PRESSURE
 - ALLOWS FINE LOGO AND GRADIENT COLOURS
- LESS DURABILITY THAN SCREEN PRINTING AND EMBROIDERY



SUBLIMATION

- MOST POPULAR METHOD
- TECHNIQUE USES INK OR DYE TO TRANSFER ARTWORK ONTO GARMENT
- FULL CREATIVE FREEDOM, VERSATILE TO ACHIEVE EXACT COLOUR AND DESIGN



SUBLIMATION

LEOTARD



STYLE : P717
SIZES : 4 -16 (YOUTH), 8-16 (LADIES)
MATERIAL : 86% polyester/14% spandex , 230 GSM

Covered brief, wide shoulder straps with scoop back

CROP TOP



STYLE : J794
SIZES : 4 -16 (YOUTH), 8-16 (LADIES)
MATERIAL : 86% polyester/14% spandex , 230 GSM

Fully lined in shell fabric, elastic finish under bust, neckline and armhole binding, wide shoulder straps

LEGGINGS



STYLE : AGP113147
SIZES : 4 -16 (YOUTH), 8-16 (LADIES)
MATERIAL : 86% polyester/ 14% spandex , 230 GSM

Elastic waist, flatlock crutch seam

BIKE SHORTS SHORT LEG



STYLE : AGS113144
SIZES : 4 -16 (YOUTH), 8-16 (LADIES)
MATERIAL : 86% polyester/ 14% spandex , 230 GSM

Elastic waist, flatlock crutch seam

BIKE SHORT SHORT LEG



STYLE : AGS113145
SIZES : 4 -16 (YOUTH), 8-16 (LADIES)
MATERIAL : 86% polyester/14% spandex , 230 GSM

Elastic waist, flatlock crutch seam

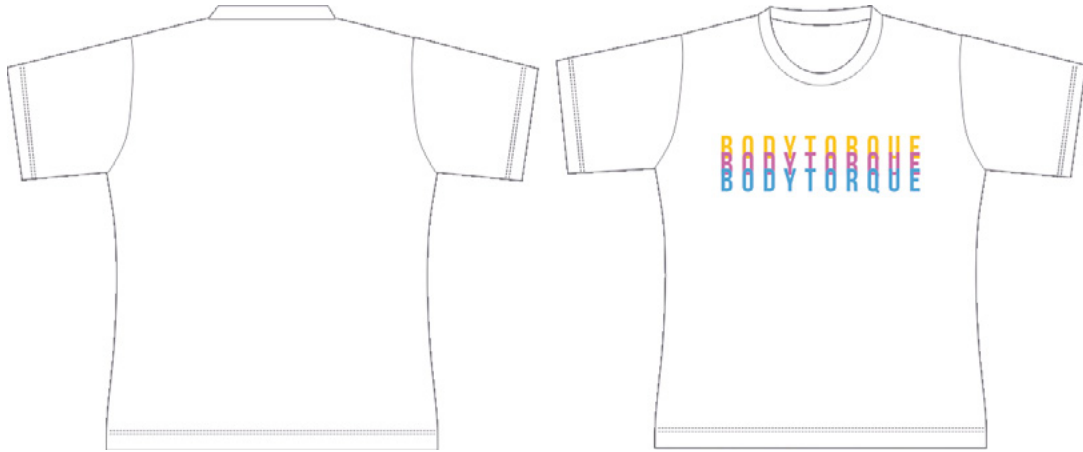
SUBLIMATED TEE



STYLE : P215
SIZES : 4 -16 (YOUTH), XS-5XL (UNISEX)
MATERIAL : 100% Polyester, 160-165 GSM

Standard Tee

LADIES TEE



STYLE : P366
SIZES : 8-16 (LADIES)
MATERIAL : 100% Polyester, 160-165 GSM

Standard Tee, additional waist and bust shaping

TANK TOP



SIZES : 4 - 16 (YOUTH), XS-3XL (UNISEX)
MATERIAL : 100% Polyester, 160-165 GSM

Muscle Tank

RAGLAN POLO



STYLE : P02
SIZES : 4 -16 (YOUTH), XS-3XL (UNISEX)
MATERIAL : 100% Polyester

Standard Polo with Raglan Sleeves

SUBLIMATED POLO



STYLE : P01
SIZES : 4 -16 (YOUTH), XS-3XL (UNISEX)
MATERIAL : 100% Polyester

Standard Polo

LADIES POLO



STYLE : P352
SIZES : 4 -16 (YOUTH), XS-3XL (UNISEX)
MATERIAL : 100% Polyester

Standard Polo, additional waist and bust shaping

TRACK PANT



STYLE : P664
SIZES : 4 -16 (YOUTH), XS-3XL (UNISEX)
MATERIAL : 100% Polyester, 200-320 GSM

100% Polyester

TRACK JACKET



STYLE : P675
SIZES : 4 -16 (YOUTH), XS-3XL (UNISEX)
MATERIAL : 100% Polyester, 200-320 GSM

100% Polyester

TRAINING SHORTS



STYLE : P938 (LADIES), P913 (KIDS / UNISEX)
SIZES : 4 -16 (YOUTH), 6-16 (LADIES), XS-2XL (MENS)
MATERIAL : 100% Polyester, 160-180 GSM

100% Polyester

SUBLIMATION SHORTS



STYLE : P832
SIZES : 4 -12 (YOUTH), XS-5XL (UNISEX)
MATERIAL : 100% Polyester, 180 GSM

100% Polyester



CUT & SEW

CUT & SEW POLO



AVAILABLE COLOURS



STYLE : MEN (P400MS) | WOMEN (P400LS) | YOUTH (P400KS)
MATERIAL : 65% Polyester 35% Cotton Pique, 210GSM
SIZES : MEN (S-3XL, 5XL), LADIES (8-24), YOUTH (4-16)

UPF Rating - Light Colours UPF 30+, Dark Colours UPF 50+. Durable top-stitched armhole and twin needle sleeve/hem, Knitted flat collar for sleek appearance, Button placket with dyed to match pearlised button

CUT & SEW POLO



AVAILABLE COLOURS



STYLE : MEN (210) | WOMEN (2LPS) | YOUTH (2KP)
MATERIAL : 65% Polyester 35% Cotton, 210GSM
SIZES : MEN (S-5XL), LADIES (8-24), YOUTH (4-16)

Easy care, reduced pilling. Knitted collar with reinforced herringbone tape on inside neck seam and 2-button placket. Set-in sleeves with open cuffs. Straight hem with herringbone tape reinforced side splits. Complies with standard AS/NZS 4399:1996 and AS/NZS

CUT & SEW TRACK JACKET



AVAILABLE COLOURS



STYLE : UNISEX (1611) | YOUTH (3611)
MATERIAL : 100% RIPSTOP POLYESTER, 125GSM
SIZES : UNISEX (S-5XL), YOUTH (4-14)

Ripstop shell fabric, contrast colour panels, 2 external zipped pockets, stand up collar, jersey interlock lining, internal zip for easy direction

CUT & SEW TRACK PANT



AVAILABLE COLOURS



STYLE : UNISEX (1605) | YOUTH (3605)
MATERIAL : 100% POLYESTER, 125GSM
SIZES : UNISEX (S-3XL, 5XL), YOUTH (4-14)

Ripstop shell fabric, two side zipped pockets, elasticised waist with drawstring, jersey interlock lining, zippered leg opening with taffeta lining

CUT & SEW TRACK JACKET



AVAILABLE COLOURS



STYLE : UNISEX (7PFJ) | YOUTH (7PFJ)
MATERIAL : 100% POLYESTER, 125GSM
SIZES : UNISEX (S-5XL), YOUTH (4-14)

Ribbed cuff and basque. Full zip front opening. Two front slant pockets.

CUT & SEW TRACK PANT



AVAILABLE COLOURS



STYLE : UNISEX (7WUZP) | YOUTH (7WUZP)
MATERIAL : 100% POLYESTER, 125GSM
SIZES : UNISEX (S-5XL), YOUTH (4-14)

Fully lined with mesh and taffeta. Two front welt pockets with stitch detailing. One hip pocket with zip closure. Zip leg openings. Elastic waist.

CUT & SEW TRACK JACKET



AVAILABLE COLOURS



STYLE : UNISEX (P664) | YOUTH (P664)
MATERIAL : 100% POLYESTER, 125GSM
SIZES : UNISEX (S-3XL), YOUTH (4-14)

Ribbed cuff and basque. Full zip front opening. Two front slant pockets.

CUT & SEW TRACK PANT



AVAILABLE COLOURS



STYLE : UNISEX (P675) | YOUTH (P675)
MATERIAL : 100% POLYESTER, 125GSM
SIZES : UNISEX (S-3XL), YOUTH (4-14)

CUT & SEW SOFT SHELL JACKET



AVAILABLE COLOURS



STYLE : MEN (J3880) | FEMALE (J3825)

MATERIAL : OUTER: 100% BONDED POLYESTER LINING: POLYESTER KNIT FABRIC BONDED WITH MICRO FLEECE
SIZES : MEN (S-5XL), LADIES (S-2XL)

2 Way front zip with movable sliders. Wind flap chin guard and stand up collar. Outer right chest zippered vertical pocket with metal puller and audio port access. Adjustable rubber cuff closures. 2 Concealed zippered front pockets with metal pullers

CUT & SEW SOFT SHELL VEST



AVAILABLE COLOURS



STYLE : MEN (J3881) | FEMALE (J29123)

MATERIAL : OUTER: 100% BONDED POLYESTER LINING: POLYESTER KNIT FABRIC BONDED WITH MICRO FLEECE
SIZES : MEN (S-5XL), LADIES (S-2XL)

2 Way front zip with wind flap chin guard and stand up collar. Outer right chest zippered vertical pocket with metal puller and audio port access. 2 Concealed zippered front pockets with metal pullers.

CUT & SEW SHORT



AVAILABLE COLOURS



STYLE : MEN (S611HB) | WOMEN (S611LD) | YOUTH (S611KS)
MATERIAL : 90% POLYESTER 10% SPANDEX, 120 GSM
SIZES : MEN (S-3XL, 5XL), LADIES (6-22)

Four way stretch

CUT & SEW SHORT



AVAILABLE COLOURS



STYLE : MEN (ST511M) | WOMEN (ST512L) | YOUTH (ST511K)
MATERIAL : 90% POLYESTER 10% SPANDEX, , 120 GSM

Elastane Stretch fabric. Quick dry fabric with mesh panels for added breathability. Reflective visibility tape leg feature. Built-in quick drying mesh fabric briefs reduces chaffing. "No twist" elastic waist with internal soft drawcord. Internal key fob pocket.



For enquiries please contact
AMY DE FOREST

Email: adeforest@belgraviports.com.au

Phone: +61 401 070 152

Address: 20 Longstaff Road, Bayswater, Victoria, 3154