



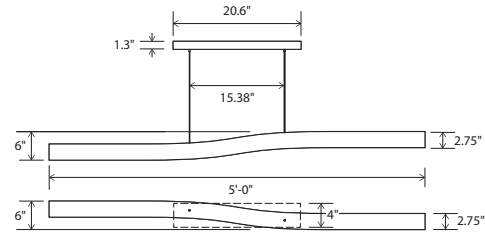
Camur, walnut



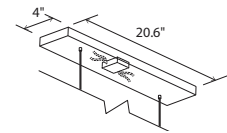
Light and delicate, subtly unique while simple, the camur must be experienced to really be appreciated. The gentle curve appears from the bottom just the same as it does from the side: but the perspectives found between the two intrigue.

Nick Sheridan,
Designer

Camur linear pendant



Dimensions: 5'-0" x 2.75", 2.75"
 Materials: solid wood, polymer
 Product weight: 6 lb
 Light source: integrated LED
 Light output: 2500 Lumens (source)
 Light color*: 2700 K or 3500 K
 Color accuracy: 90+ CRI
 Power usage: 35 W
 Dimmable (see driver below)
 Brushed aluminum (CM-006) camur canopy included
 Canopy dimensions: 20.6" x 4", 1.3"
 Wood camur canopy covers are available:
 Walnut (CM-001) wood camur canopy cover: part # 60-150-005W
 Dark stained walnut (CM-002) wood camur canopy cover: part # 60-150-005D
 See website for more canopy information
 72" drop length, field adjustable
 Suitable for a sloped ceiling
 Wood grain will vary
 Specifications subject to change



Camur canopy, brushed aluminum



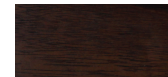
Camur canopy cover, walnut

MATERIAL & FINISH OPTIONS

Camur part # 07-210-	
Wood Body	
walnut (CM-001)	W
dark stained walnut (CM-002)	D
Lamping*	
2700 K LED	27
3500 K LED	35
Driver	
120 V AC input voltage	P1
TRIAC, ELV & 0-10V dimming	
277 V AC input voltage	P2
TRIAC, ELV & 0-10V dimming	



walnut (CM-001)



dark stained walnut (CM-002)

The true beauty of the Camur is difficult to appreciate in print. When experiencing this fixture in person you begin to see the subtlety and grace of its vertical and horizontal movements. As you walk around this fixture the shape will morph from a beautiful curve to a straight line. We have created a video to help celebrate these details at www.cernogroup.com/camur

*Available in 3000K, 4000K and other color temperatures upon request

