

Tress, terra

by Marc Sadler

FOSCARINI



DESCRIPTION

The seduction of a woman's tress was the initial inspiration for the Tress family of lamps. This design-come-true by Foscarini was achieved through the development of a completely original technological process, involving a fiberglass and resin tape woven with orderly casualness to become the structure and aesthetics of the lamp. Tress changes personality according to its colour: it is light and discrete in white, strong and decisive in black and volcanic and totemic in crimson, which makes the contrast between the interior and the exterior even more evident. In the floor version the weave includes the power cables and acts at the same time as the structure, decoration and screen, a never before seen interplay of full and empty spaces, light and shadow. The light spread through the lamp produces a particularly attractive effect, thanks to two separate light sources: the one in the lower position completely illuminates the interior and highlights the graphic presence of the weave, while the upper light produces an illuminated reflection towards the ceiling.

MATERIALS

Coated fiberglass-based composite material, varnished metal and aluminium

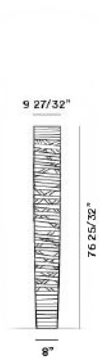
COLORS

Black, Greige, White

Floor lamp with diffused and indirect light. The fibreglass-based composite material diffuser is produced by modelling tape along a mould with an automatic control of the pitch/pattern, which is then epoxy powder coated. The large version features two separate light sources: one is located at the upper tip of the diffuser, and the other inside the diffuser; upper parabola made of aluminium. The transparent cable is fitted with a dimmer which can be used both to adjust the level of luminous intensity of the upper light source gradually or as the ON/ OFF switch for the lower light source. In the medium version: single light source in the base inside the diffuser; the dimmer fitted on the transparent cable can be used both to adjust the level of luminous intensity gradually as well as an ON/OFF switch.

Tress grande

SCHEMATIC & LIGHT EMISSION



MATERIAL

Coated fiberglass-based composite material, varnished metal and aluminium

COLORS



ACCESSORIES

Tress

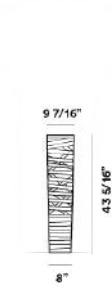
LIGHT SOURCE

75+300WE26 PAR30

CERTIFICATIONS

Tress media

SCHEMATIC & LIGHT EMISSION



MATERIAL

Coated fiberglass-based composite material, varnished metal and aluminium

LIGHT SOURCE

75WE26 PAR30

CERTIFICATIONS

COLORS



ACCESSORIES

Tress

Tress grande LED

SCHEMATIC & LIGHT EMISSION



MATERIAL

Coated fiberglass-based composite material, varnished metal and aluminium

LIGHT SOURCE

54W
2700 K 4790 lm CRI>90

CERTIFICATIONS

COLORS



ACCESSORIES

Tress

Tress, terra

Designer

FOSCARINI

MARC SADLER

Marc Sadler boasts lengthy experience as an industrial designer in the field of sports, which has often led him to experiment with new materials and innovative production processes.

This innovative and experimental approach has become his *modus operandi*, even when he designs for sectors which are traditionally more focused on the styling component. He has won four *Compassi d'Oro ADI*, including the one for Mite and Tite in 2001, for projects which have become genuine icons in the Foscarini collection, together with Kite, Twiggy, Tress and Jamaica, each one marked by technological and styling innovation.

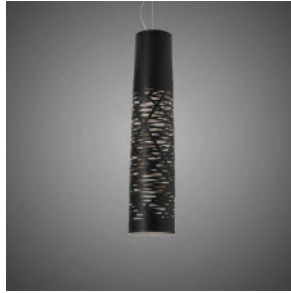


Tress, terra
family

FOSCARINI



Tress Grande



Tress



Tress Stilo



Tress Stilo



Tress