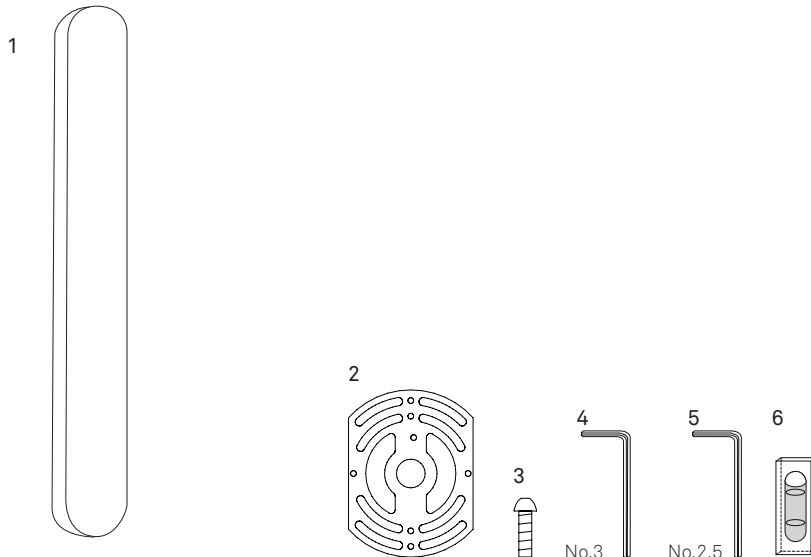


I-CLUB

I AG LED UL | SET UP



CONTENTS



- | | |
|-------------------|-------|
| 1 Shade | 1 un. |
| 2 Back plate. | 1 un. |
| 3 Screws | 2 un. |
| 4 Allen key N°3 | 1 un. |
| 5 Allen key N°2,5 | 1 un. |
| 6 Level | 1 un. |

TECHNICAL SPECIFICATIONS

Integrated LED

120 - 277V



Linear Module
3 x 10,8W - 900mA
120-277V 60Hz ~
36W

WEIGHT

Net Weight	9,9 Lb
Gross Weight	18,7 Lb

WARNINGS

Before assembly and installing this product, carefully read the following:

Turn off the mains before installing the lamp. Dry location only. This lamp is for indoor use only.

IMPORTANT.

Luziferlamps S.L. provides ceiling anchor templates for your luminaires. In case these templates are not used, LZf shall not be responsible for any possible incidents/ or complaints.

WOOD VENEER: Due to the natural nature of the material sometimes one may note slight ondulations in the wood veneer. This is a natural reaction to humidity or different climatic conditions and should go away with use. Since wood is a natural material, a gradual change in tone may occur over time. Furthermore, if the lamps have been purchased at different times, there will be differences in colour and tone, particularly in light coloured veneers. Luziferlamps S.L. will not be held responsible for this.

INSTALLATION TIP: Make sure that the seam on your lamp shade is facing away from the main view of the fixture.



PROTECTIVE FILMS: Don't forget to remove all protective films from the acrylic surfaces of your lamp.

MORE INFO:
<http://www.lzf-lamps.com/guarantee/>





ASSEMBLY INSTRUCTIONS

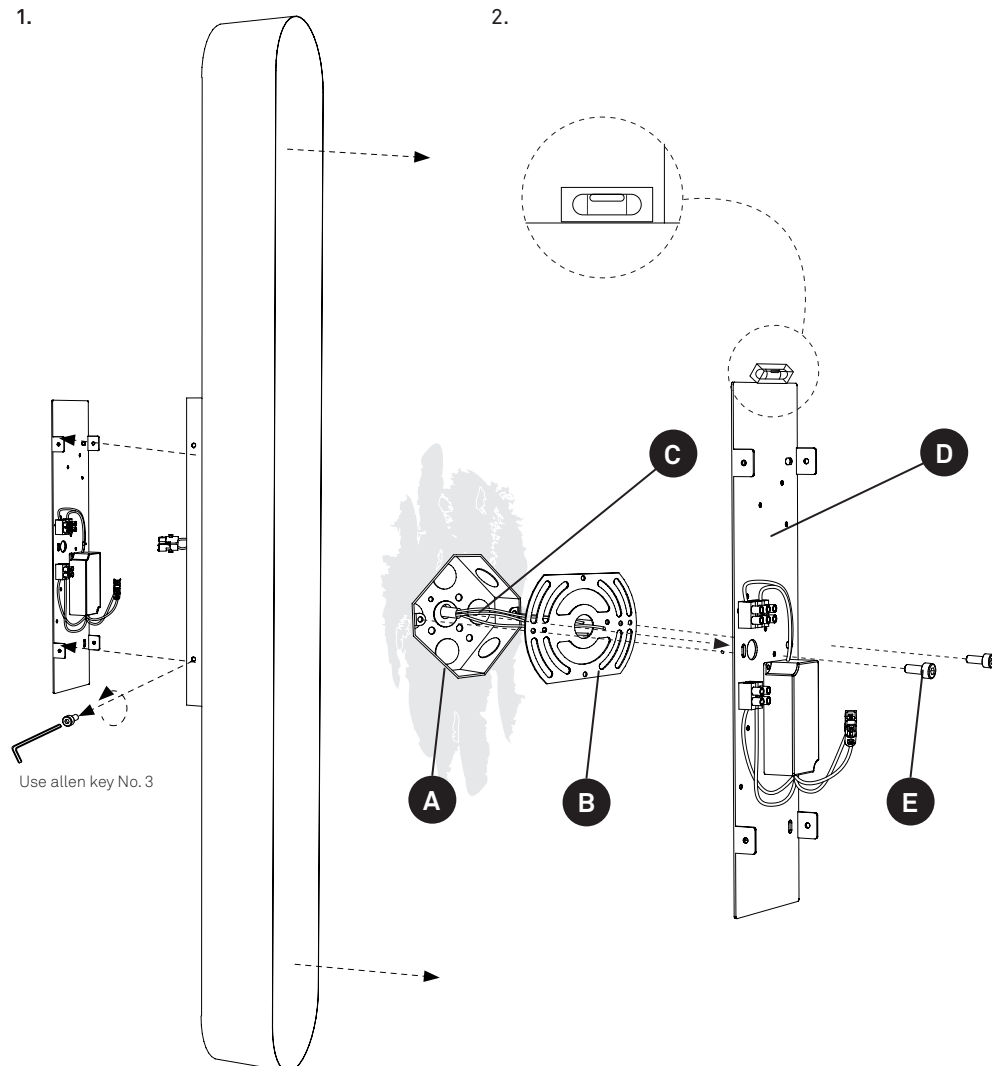
1.

2.

1. Use the Allen key.

Remove these screws to separate the shade from the wall light backing plate.

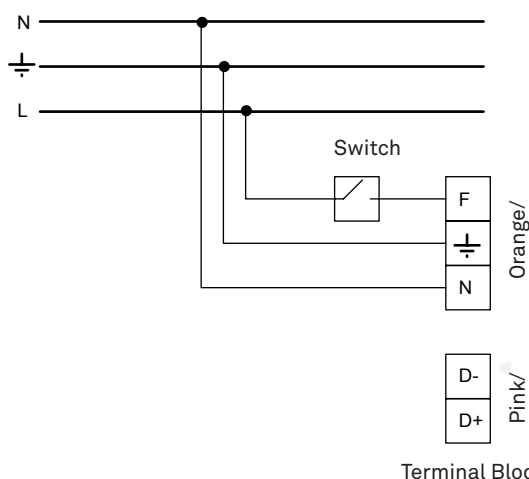
2. Feed the electrical wires (C) in through the back plate (B) and wall light backing plate (D). Level the wall light backing plate (D). Fix it to the junction box (A) with the screws (E) and connect the electrical wires to the main.



3.

OPTION 1
NON DIMMABLE

MAINS CABLE



3. MAINS CONNECTION OPTIONS

Turn off the mains before installing the lamp.
Connect the lamp to the mains as follows.

OPTION 1: NON DIMMABLE

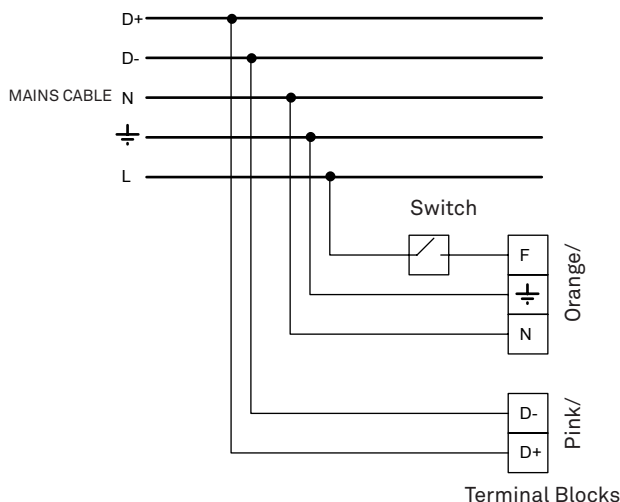
You should have a three wire cable coming from the mains.

Connect poles **N** and **GND** (\perp) as shown in the terminal block Orange. Connect the line (**L**) that goes through the switch installation to the pole **F** (terminal block Orange).
Poles D- and D+ are not used.



ASSEMBLY INSTRUCTIONS

OPTION 2 DIMMING



OPTION 2: DIMMING

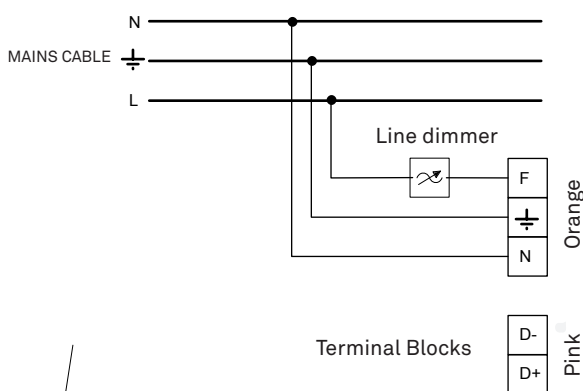
You should have a five wire cable coming from the mains.

Connect poles **N** and **GND** (⊕) as shown in the terminal block Orange. Connect the line (**L**) that goes through the switch installation to the pole **F** (terminal block Orange).

After connecting the mains wires to the terminal block take the other two wires (the +/- dimming controls) and connect them to the dimming terminal block (terminal block Pink).

Note: Please check the polarity of the dimming control wires before connecting. If you do not connect the polarity correctly, it will not function.

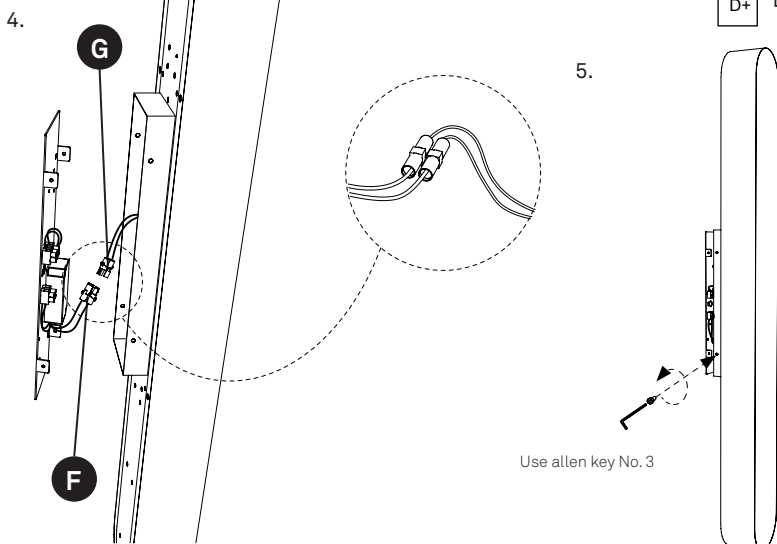
OPTION 3 LINE DIMMING (120V only)



OPTION 3: LINE DIMMING

You should have a three wire cable coming from the mains.

Connect poles **N** and **GND** (⊕) as shown in the terminal block Orange. Connect the line (**L**) that goes through the line dimmer installation to the pole **F** (terminal block Orange). Poles D- and D+ are not used.



4. Take the connector from the Driver (F) and connect it to the shade connector (G).

5. Return the shade to its position. Put the holding screws back into place.

6. Turn on the mains again.

© Luziferlamps, S.L.
Valencia, Spain. 2018.
All rights reserved.
www.import-ent.com
support@import-ent.com

GENERAL CARE INSTRUCTIONS

REV.06-2018

D88_329

Use and care of your lamp.

You have just purchased an original handmade product by LZF. Your lamp is made out FSC® certified natural wood with our patented veneer finish Timberlite®. This treatment both protects and safeguards the wood veneer against breakages.

Depending on the type of fixture use a feather duster, soft cleaning cloth or damp cloth for cleaning. On our more delicate shades, like those made from wood strips, a feather duster or an air blower is preferable. In our more solid shades a damp cloth may be used. Clean only the flat surface of the veneer with the cloth, and please avoid any moisture contact along the edge of the veneer.

Acrylic Diffusers

The acrylic diffusers on your lamp can be cleaned with a regular window cleaning spray and a soft cloth. Do not use solvents of any kind.

Integrated LED

All LEDs are included in your lamp. Never touch the LED surface with your bare hands as this may reduce the life of your LED.

Precautions

Luminaire for indoor use only.

Avoid direct sunlight, strong indirect sunlight and moisture on your lamp. Unplug the lamp before cleaning or changing the light bulb. Installation of the fixture should only be performed by qualified electrical personnel or by the LZF service department.