

ASSEMBLY & INSTALLATION INSTRUCTIONS

A578

Fritz Pendant 188900



Component Parts

- A Fixture**
- B Crossbar**
- C Ground Screw**
- D Jam Nut**
- E Canopy**
- F Canopy Ring**
- G Canopy Pipe Assembly**
- H Fixture Coupling**
- I Nipple**
- J Fixture Pipe**
- K Clutch**
- L Set Screw**
- M Plastic Sleeve**
- N Socket**
- O Thumb Screw (3)**
- P Glass**
- Q Cup**



ASSEMBLY & INSTALLATION INSTRUCTIONS

A578

Fritz Pendant 188900

CAUTION: FAILURE TO INSTALL THIS FIXTURE PROPERLY MAY RESULT IN SERIOUS PERSONAL INJURY OR DEATH AND PROPERTY DAMAGE. We recommend installation by a licensed electrician. This product must be installed in accordance with applicable installation code(s), by a person familiar with the construction and operation of the product and the hazards involved.*

Caution: Do not exceed maximum wattage noted on fixture. Use only recommended bulbs with fixture.

Please Note: After installation extra hardware and accessories are possible; our kits are used on multiple products.

To Install Fixture (Figures 1 & 2, next page)

CAUTION: BE SURE POWER IS OFF AT THE MAIN BREAKER BOX PRIOR TO INSTALLATION.

1. Carefully unpack fixture (A) from the carton.
2. Thread the jam nut (D) and crossbar (B) onto threaded nipple (I). Leave parts loose. Threaded nipple is attached to canopy pipe assembly (G).
3. Using two machine screws (not provided), temporarily fasten the crossbar (B) to the electric box.
Note: A new electric box comes with screws. When replacing a fixture, retain the existing screws for use with the new fixture.
4. Adjust the length of the threaded nipple (I) in crossbar (B) so the canopy ring (F) will hold canopy (E) against the ceiling with no threads showing for best appearance. When the correct adjustment is established, tighten jam nut (D) against the crossbar to hold adjustment.
5. Remove the crossbar (B) from the electrical box and proceed with assembly instructions.
6. Locate fixture pipe (J) and slip it over the wires coming from fixture.
7. Apply a drop of the supplied thread locking compound to the internal threads of fixture coupling (H) and screw fixture pipe (J) into fixture coupling, being careful not to twist the wires.
Note: Application of the thread locking compound is necessary to prevent the stem from loosening during regular maintenance and cleaning of the fixture. Be certain to apply the compound.
8. Carefully slide canopy ring (F) and canopy (E) over fixture pipe (J) until it rests on the fixture. Make sure the smaller diameter side of canopy ring is oriented up.
9. Slide the wires from the fixture pipe (J) through the canopy pipe assembly (G).
10. Unscrew the clutch (K) from the canopy pipe assembly (G); slide it across the wires and onto the fixture pipe (J). Follow this with the plastic sleeve (M), oriented so the tapered end nests in the clutch (K) (Figure 2).
11. Slide the fixture pipe (J) into the canopy pipe assembly (G) as far as necessary to give you the total length of the fixture which you desire. It may be necessary to loosen the set screw (L) in the clutch (K). Be careful not to scratch the pipe surface and to pull excess wire up through the canopy pipe assembly (G). There must be a minimum 1-1/2" of inner pipe inside the outer pipe.
12. Tighten the set screw (L) in clutch (K) firmly with hex wrench provided.
13. Using two machine screws (not provided), fasten the crossbar (B) to the electric box.

continued...

ASSEMBLY & INSTALLATION INSTRUCTIONS

A578

Fritz Pendant 188900

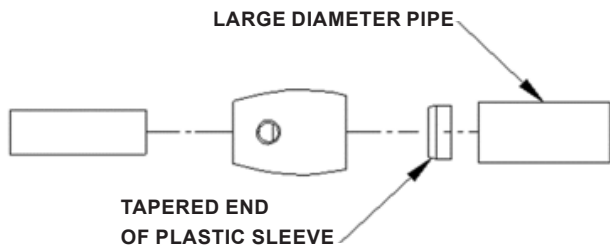
14. Using suitable wire connectors (not provided) connect fixture wires to supply (white to white and black to black). Attach a pigtail lead to the crossbar ground screw (C). Holding canopy (E) close to the ceiling connect all ground wires (bare copper or green to bare copper or green). Push wires back into electrical box.

CAUTION: MAKE SURE WIRE CONNECTORS ARE TWISTED ON SECURELY AND NO BARE WIRE IS EXPOSED.

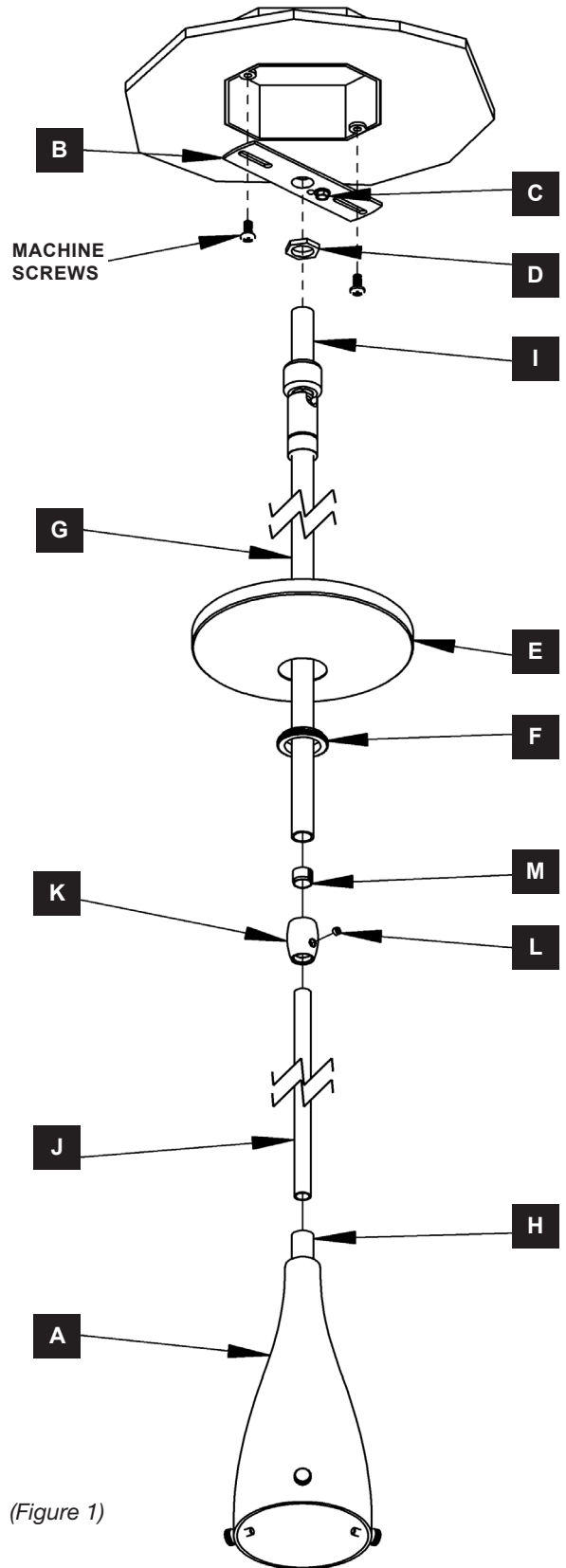
15. Push canopy (E) against ceiling and secure with canopy ring (F).

CAUTION: BE SURE NO WIRES ARE PINCHED BETWEEN THE CANOPY (E) AND THE CEILING.

16. See 'To Install Glass' on following page to complete installation.



(Figure 2)

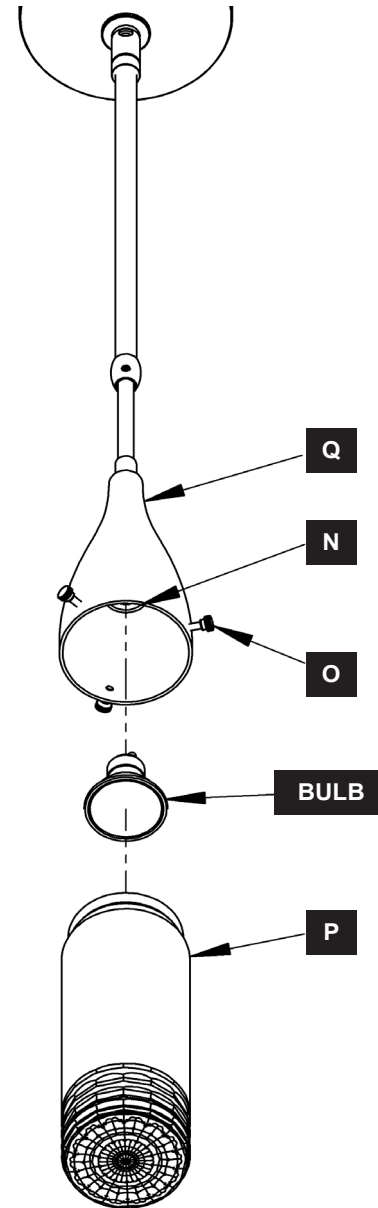


(Figure 1)

Fritz Pendant 188900

To Install Glass *(Figure 3)*

1. Install bulb (not included) into socket (N) .
2. Place glass (P) into fixture cup (Q).
***Note:** It may be necessary to loosen thumb screws (O) to allow glass (P) to slide into cup (Q). They will not need to be removed completely.*
3. Align top groove in glass (P) with thumb screws (O) and tighten thumb screws (O) evenly to secure glass (P).
4. Restore electricity at main breaker.



(Figure 3)

If you need further assistance, or find that you are missing any parts, please contact the dealer from which you purchased this product. We hope you enjoy your fixture!

*** Hubbardton Forge will not be liable for injury or damage caused by improper installation, lamping or use of this fixture.**