



USBEL060

Design by Manuel Vivian

Collection consisting of suspended lamps with a metal frame covered with strips of extra smooth flame-retardant pongé fabric. Available in several colors and sizes.

Typology: SUSPENDED

Ratings

- E26 or GU24 LED
- Diffused light
- Installs over 4 in. octagonal J-box
- Power supply 120V AC
- Switch mode: on-off
- Steel frame

GU24 LED VERSION

- CCT 2700 K, CRI 80
- Dimmable ELV trailing edge, phase cut

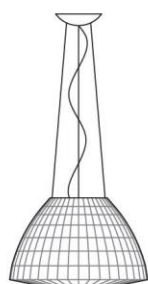
Product code composition

BELL / diffuser INCLUDED, with upward and downward lighting

Type	Article	Colours	Finish	Source
US	BEL 060 E26	BC white	XX	E26 1 x Max 17W LED or 1 x Max 26W fluo
	BEL 060 LED	BW warm white		LED GU24 1x15W - included 120Vac - CRI80 diffused beam - 2700K 1600 lm - 107 lm/W dimmable ELV TRAILING EDGE PHASE CUT LED
GI gold yellow				
NE black				
		RS red		

lb 16.53 ft³ 15.18

Ø 15 cm - 5 7/8"



5 cm - 2"

38 cm - 15"

max 325 cm - max 128"

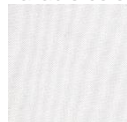
Ø 60 cm - 23 5/8"



DRY LOCATION

example composition code | US | BEL060LED | GI | XX

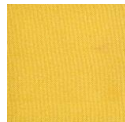
Available colors



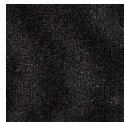
BC
White



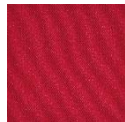
BW
Warm white



GI
Gold yellow



NE
Black



RB
Burgundy

USBEL060_ _ _ _ _XX

CUSTOMER _____

NOTES _____

Luminous flux for all built-in LED luminaires is shown at source level.
Technical data could be subject to alteration without notice. Axo Light does not provide legal guarantee for the accuracy of this data sheet.