



**UP KWIC**  
S. & R. Cornelissen

Collection consisting of steel and aluminum ceiling/wall lamps, suspended and floor lamps with opaline blown glass diffuser. Available in two colours and two sizes. Built-in dimmable LED light source.

Typology: CEILING-WALL LAMP

**Ratings**

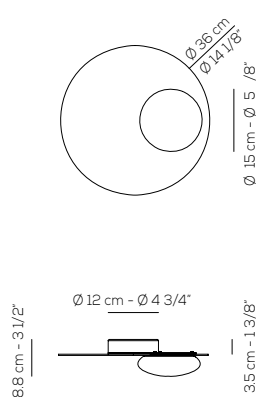
- Built in **LED** module
- CCT 3000 K
- diffused beam
- Surface installation over holes
- Supply voltage ~110-240V
- Switch mode: on-off
- Aluminum-Steel body

**UP KWIC 36**

lb 4,18 ft<sup>3</sup> 2.29

Product code composition

**KWIC / DRIVER INCLUDED / application:** both as ceiling or wall lamp



Type	Article	Colours	Finishings	Source
UP	KWIC 36	NE intense black BR transparent bronze	XX	<b>LED</b> 18W - diffused beam <b>3000K*, 2700K</b>



DRY LOCATION

CRI>90



110-240VAc



~2151 lm\*

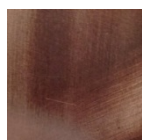
~119 lm/W\*

example composition code **UP KWIC 36 XX XX LED**

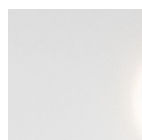
Available colors



**NE**  
Intense black



**BR**  
Transparent bronze



**BC**  
White

UPKWIC36 \_\_ XXLED

CUSTOMER \_\_\_\_\_

NOTES \_\_\_\_\_

NOTICE: Luminous flux (lm) and efficacy (lm/W) for all built in LED luminaires is based on nominal ratings of the LED sources. Technical data could be subject to alteration without notice. Axo Light does not provide legal guarantee for the accuracy of this data sheet.