

EN: Ceiling lamp. Opal diffuser made of two layers of blown glass. Metallic coated structure.

IT: Lampada da soffitto Diffusore in vetro opale soffiato incamiciato. Struttura in metallo verniciato.



### CERTIFICATIONS / CERTIFICAZIONI



Product in class I  
Apparecchio di classe I

IP20

Product for indoor use  
Apparecchio per uso interno



Product in conformity with the European directive  
Apparecchio conforme alla direttiva europea

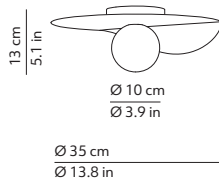


This lamp must be disposed in conformity with the EU directive  
Apparecchio di illuminazione da smaltire secondo la direttiva

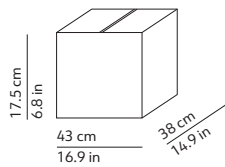
### CODES AND DIMENSIONS / CODICI E DIMENSIONI

#### FLOW CEILING

506429N / US



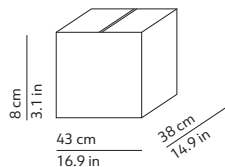
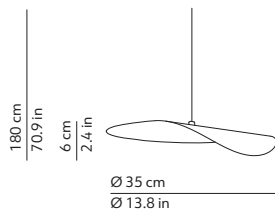
### PACKAGING / IMBALLO



Volume: 0.03 m<sup>3</sup> / 1.059 ft<sup>3</sup>  
Gross weight: 2.5 kg / 5.51 lbs

#### LEAF

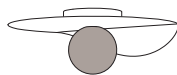
506430N / US



Volume: 0.01 m<sup>3</sup> / 0.353 ft<sup>3</sup>  
Gross weight: 1.62 kg / 3.57 lbs

### MATERIALS AND FINISHINGS / MATERIALI E FINITURE

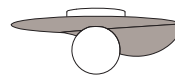
#### DIFFUSER / DIFFUSORE



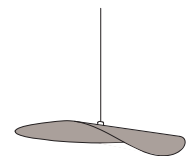
White / Bianco

Opal diffuser made of two layers  
of blown glass  
Diffusore in vetro opale  
soffiato incamiciato

#### STRUCTURE / STRUTTURA



Metallic coated structure  
Struttura in metallo verniciato



### FURTHER INFORMATION / INFORMAZIONI AGGIUNTIVE

230V  
or 120V Feeding / Alimentazione

Light source / Sorgente luminosa  
1 x 25W max - G9

Dimmable / Dimmerabile  
Yes



Ceiling lamp  
Lampada a soffitto