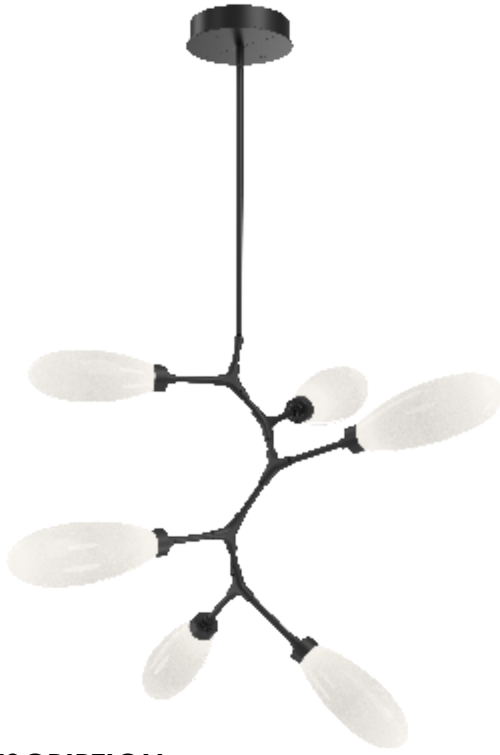
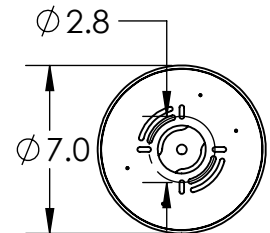
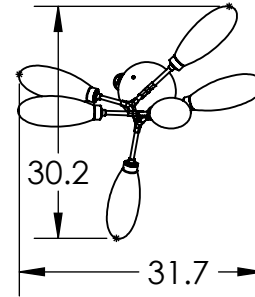
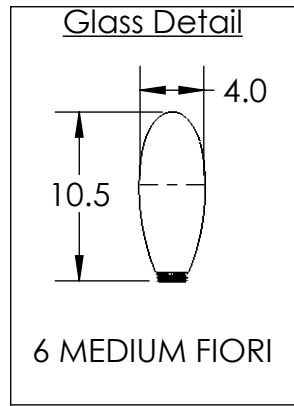
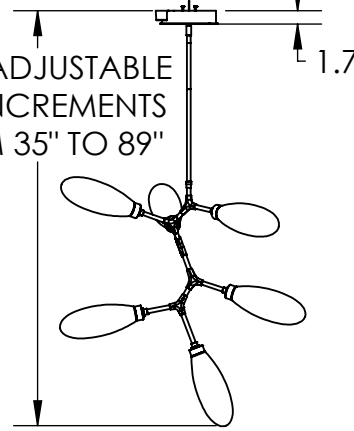


All dimensions are shown in inches unless otherwise stated.



OAH ADJUSTABLE  
IN 3: INCREMENTS  
FROM 35" TO 89"



Mounting Method: Mounts to j-box

**PRODUCT DESCRIPTION**

Lustrous white buds of artisan blown glass offer a playful reinterpretation of mid-century style in this 6-light branching vine chandelier. Integrated LED light gives the glass a rich luster and opacity that's reminiscent of mid-century Italian art glass.

**PRODUCT SPECIFICATION**

Construction: Steel Canopy, Steel Rods, Blown Glass

Finish Options: BS MB FB GB CS GP BB NB SN GM RB HB

Glass Options: Blown Glass

Suspension Method: Ceiling Mount

Weight(lbs.): 25

UL Rating: DRY

Top Diffuser: CLOSED GLASS

Bottom Diffuser: CLOSED GLASS

Light Source: LED

Electrical Qty: 6

Wattage (Watts):16

Voltage (Volts): 120

Source Lumens: 1080

Dimming: Forward/Reverse Phase to 1%

CCT: 2700/3000K

Driver Quantity & Location: 1, in Canopy

CRI: 93+

Power Factor: >0.9

\*Translucent finish upgrade available for additional charge

SCAN FOR MORE  
INFORMATION

Notes:

**GENERAL NOTES:**

Visit [studio.hammerton.com](http://studio.hammerton.com) to read about our Lifetime Limited Warranty.

This product may use mixed materials (steel and aluminum) in its construction. Transparent finishes may vary between steel and aluminum.

All Hammerton fixtures are handcrafted by artisans. Subtle imperfections reflect the mark of the artisan and should be expected in any handcrafted product. Dimensions may vary up to 7/8".

Rev (B) 9/27/2022