

# BUSTER+PUNCH

LONDON

[ product. ]

## ELECTRICITY / 1G TOGGLE SWITCH

[ motion. **ON/OFF.** ]

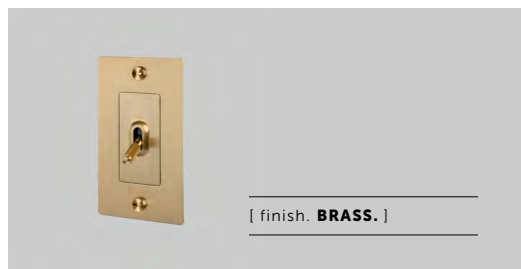
[ look. **CROSS.** ]

[ detail. **COIN SCREW.** ]

[ born. **LONDON.** ]

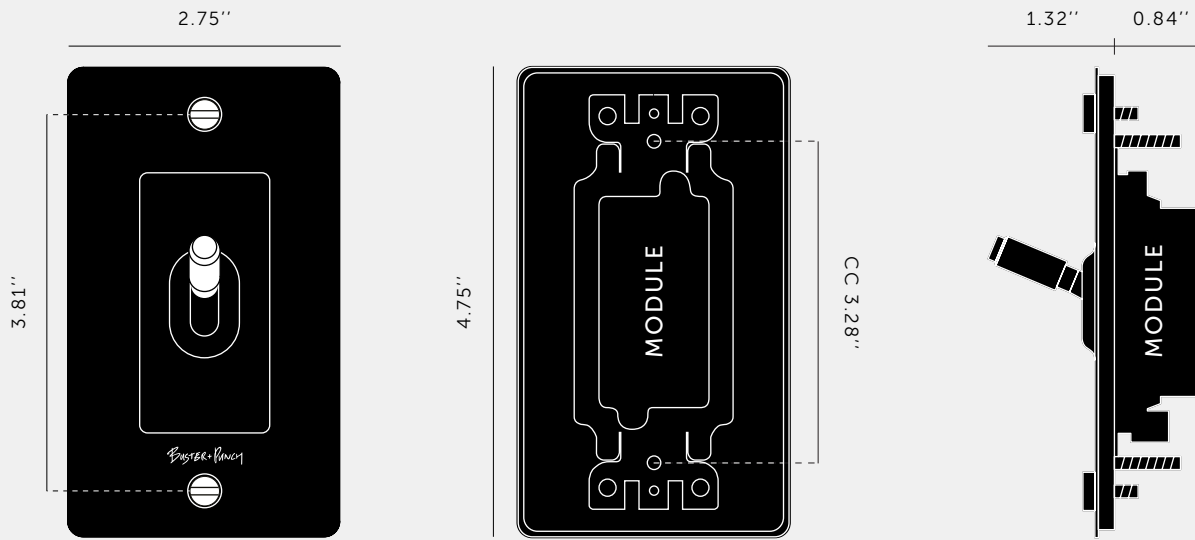
[ region. **NORTH AMERICA.** ]

A solid metal toggle switch with a diamond-cut knurled knob to feel amazing with every touch. The switch is finished with a flat plate and our signature solid metal coin screws. Available in five different finishes. You can also team them up with our dimmers, duplex and USB outlets in matching finishes.



[ gang. **1G.** ]

[ info. **MEASUREMENTS.** ]



[ info. **SPECIFICATIONS.** ]

Our Metal Electricity range has solid stainless steel plates, in our signature white, steel, brass, smoked bronze and black finishes.

Module: NTM-01384 (US-TO-MO-A)

Style: On/ Off Toggle switch

120-277V AC /15 A / 60 HZ

3 way switching (can be controlled from 2 locations)

Certification: cETLus 5005703

[ info. **FINISH & SKU NUMBERS.** ]

[ finish. ]

[ US. ]

|               |            |
|---------------|------------|
| White         | NTG-143085 |
| Steel         | NTG-07084  |
| Brass         | NTG-05081  |
| Smoked Bronze | NTG-09083  |
| Black         | NTG-023083 |

[ info. **CARE INSTRUCTIONS.** ]

Wipe with damp cloth with no loose hairs, avoid using any chemicals. All finishes are prone to aging.

[ info. **CERTIFICATION.** ]

Plates: Underwriters Laboratories cULus listed for use throughout North America.

Toggle: Intertek cETLus listed number for use throughout North America.

[ please. **NOTE.** ]

DISCLAIMER: Always consult a trade professional when installing this toggle switch. Buster + Punch is not responsible for the usage or feasibility of installation requirements. This product is not suitable for damp or wet environments.

**FAQ SHEET**

| CATEGORY       | QUESTION   | ANSWER  |
|----------------|--|---|
| <b>GENERAL</b> | How do I clean my electricity collection?                                    | A slightly damp microfiber cloth is best, never use any chemicals as this will damage the metal surface.  |
| <b>TOGGLE</b>  | Are your toggles 3 way or 4 way multi-way switching?                         | Our standard toggles are 3-way switches which are suitable multi-way switching for 2 Locations. Our 4-way switch will be coming soon.   |
| <b>TOGGLE</b>  | Are the toggles available as dimmers?  | No, unfortunately they are not.   |
| <b>TOGGLE</b>  | Can we remove and replace the toggle on the plate?                           | Yes.  |
| <b>TOGGLE</b>  | Do you manufacture / stock spring loaded toggles?                            | No, unfortunately we don't.   |
| <b>TOGGLE</b>  | Can I mix a toggle switches with a dimmer?                                   | This is not possible for the complete products, but custom sets are available where you can mix toggles, dimmers and sockets. Please contact <a href="mailto:sales@busterandpunch.us">sales@busterandpunch.us</a> to make an order.                                     |
| <b>TOGGLE</b>  | Can I have a 3 way and a 4 way on the same 2G plate for Multi way switching? | No, until our 4-way switch is available this is not available, but the system is modular so you can mix and match what toggles, dimmers and sockets you want on each wall plate.  |
| <b>TOGGLE</b>  | The spring action has gone in my toggle?                                     | Please contact Buster + Punch for any faulty product. Please supply photos or videos.   |
| <b>TOGGLE</b>  | Are your toggle modules tested for use throughout North America?             | Yes, our modules are certified for use throughout North America.<br><br>Module cETLus listed number: 5005703<br>Conforms to UL STD. 20" Certified to CSA STD. C22.2 NO. 111<br>All modules are marked with the listed number.<br><br>Plate cULus listed number: 507052. |

# BUSTER + PUNCH

LONDON

[ product. ]

## ELECTRICITY / 2G TOGGLE SWITCH

[ motion. **ON/OFF.** ]

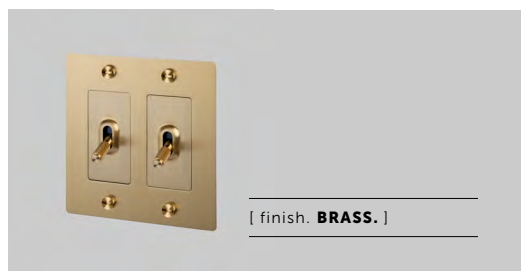
[ look. **CROSS.** ]

[ detail. **COIN SCREW.** ]

[ born. **LONDON.** ]

[ region. **NORTH AMERICA.** ]

A solid metal 2G toggle switch with a diamond-cut knurled knob to feel amazing with every touch. The switch is finished with a flat plate and our signature solid metal coin screws. Available in five different finishes. You can also team them up with our dimmers, duplex and USB outlets in matching finishes.



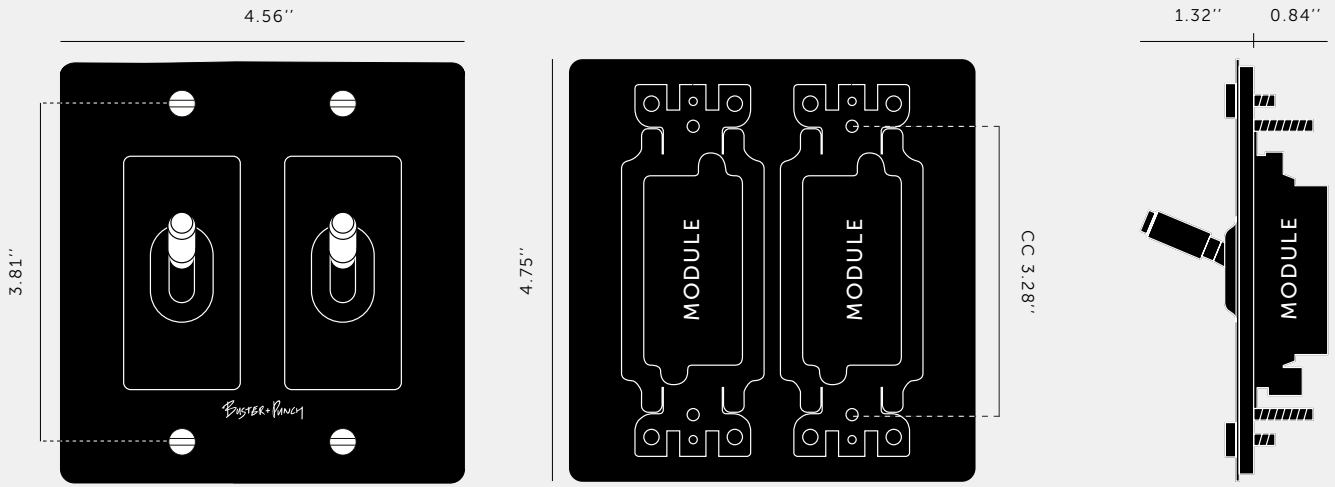
---

[ gang. **2G.** ]

---

[ info. **MEASUREMENTS.** ]

---



---

[ info. **SPECIFICATIONS.** ]

---

Our Metal Electricity range has solid stainless steel plates, in our signature white, steel, brass, smoked bronze and black finishes.

Module: NTM-01384 (US-TO-MO-A) (2 per unit)  
Style: On/ Off Toggle switch  
120-277V AC /15 A / 60 HZ  
3 way switching (can be controlled from 2 locations)  
Certification: cETLus 5005703

---

[ info. **CERTIFICATION.** ]

---

Plates: Underwriters Laboratories cULus listed for use throughout North America.

Toggle: Intertek cETLus listed number for use throughout North America.

---

[ info. **CARE INSTRUCTIONS.** ]

---

Wipe with damp cloth with no loose hairs, avoid using any chemicals. All finishes are prone to aging.

---

[ please. **NOTE.** ]

---

DISCLAIMER: Always consult a trade professional when installing this toggle switch. Buster + Punch is not responsible for the usage or feasibility of installation requirements. This product is not suitable for damp or wet environments.

# BUSTER+PUNCH

LONDON

[ product. ]

## ELECTRICITY / 3G TOGGLE SWITCH

[ motion. **ON/OFF.** ]

[ look. **CROSS.** ]

[ detail. **COIN SCREW.** ]

[ born. **LONDON.** ]

[ region. **NORTH AMERICA.** ]

A solid metal 3G toggle switch with a diamond-cut knurled knob to feel amazing with every touch. The switch is finished with a flat plate and our signature solid metal coin screws. Available in five different finishes. You can also team them up with our dimmers, duplex and USB outlets in matching finishes.



[ finish. **STEEL.** ]



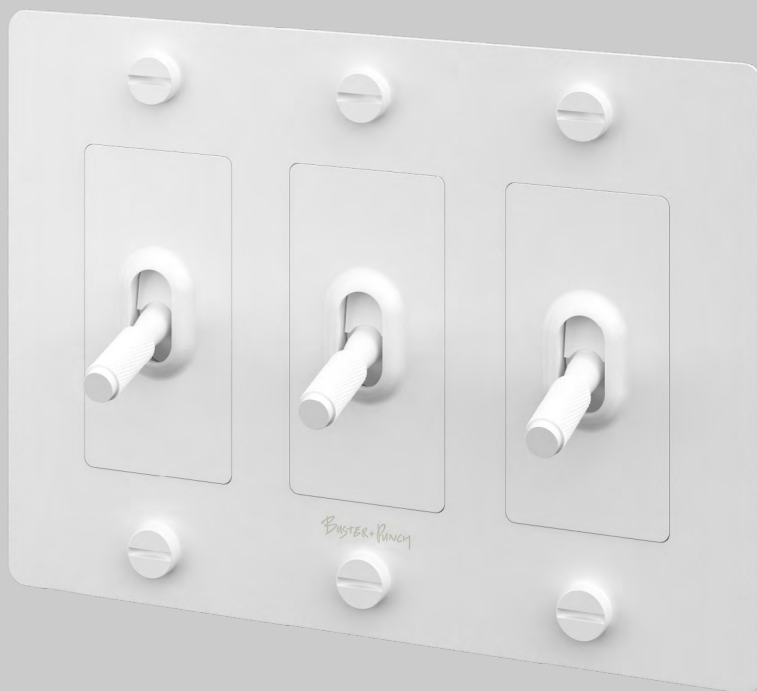
[ finish. **BRASS.** ]



[ finish. **SMOKED BRONZE.** ]



[ finish. **BLACK.** ]



[ finish. **WHITE.** ]

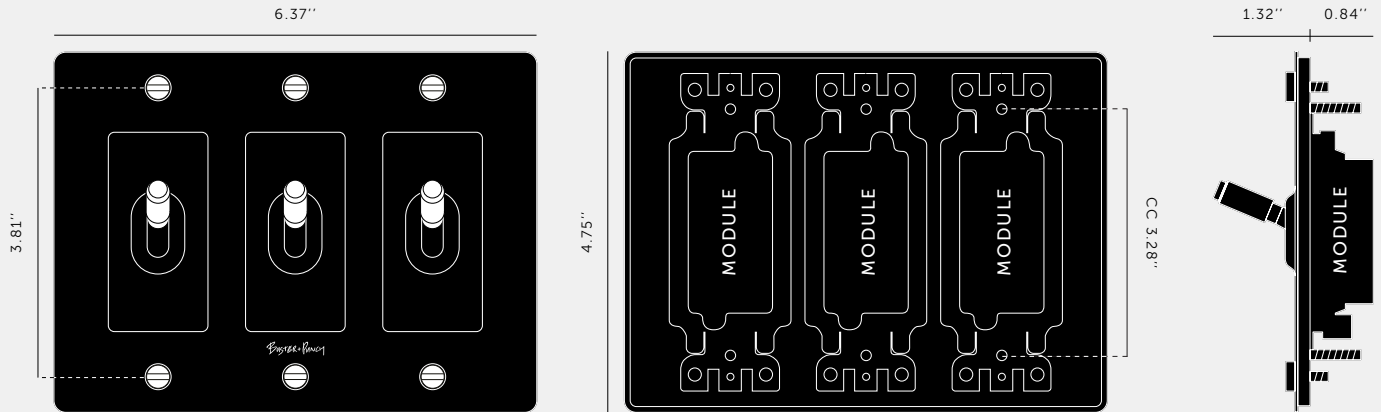
---

[ gang. **3G.** ]

---

[ info. **MEASUREMENTS.** ]

---



---

[ info. **SPECIFICATIONS.** ]

---

Our Metal Electricity range has solid stainless steel plates, in our signature white, steel, brass, smoked bronze and black finishes.

Module: NTM-01384 (US-TO-MO-A) (2 per unit)  
Style: On/ Off Toggle switch  
120-277V AC /15 A / 60 HZ  
3 way switching (can be controlled from 2 locations)  
Certification: cETLus 5005703

---

[ info. **CERTIFICATION.** ]

---

Plates: Underwriters Laboratories cULus listed for use throughout North America.

Toggle: Intertek cETLus listed number for use throughout North America.

---

[ info. **CARE INSTRUCTIONS.** ]

---

Wipe with damp cloth with no loose hairs, avoid using any chemicals. All finishes are prone to aging.

---

[ please. **NOTE.** ]

---

DISCLAIMER: Always consult a trade professional when installing this toggle switch. Buster + Punch is not responsible for the usage or feasibility of installation requirements. This product is not suitable for damp or wet environments.

# BUSTER+PUNCH

LONDON

[ product. ]

## ELECTRICITY / 4G TOGGLE SWITCH

[ motion. **ON/OFF.** ]

[ look. **CROSS.** ]

[ detail. **COIN SCREW.** ]

[ born. **LONDON.** ]

[ region. **NORTH AMERICA.** ]

A solid metal 4G toggle switch with a diamond-cut knurled knob to feel amazing with every touch. The switch is finished with a flat plate and our signature solid metal coin screws. Available in five different finishes. You can also team them up with our dimmers, duplex and USB outlets in matching finishes.



[ finish. **STEEL.** ]



[ finish. **BRASS.** ]



[ finish. **SMOKED BRONZE.** ]



[ finish. **BLACK.** ]



[ finish. **WHITE.** ]



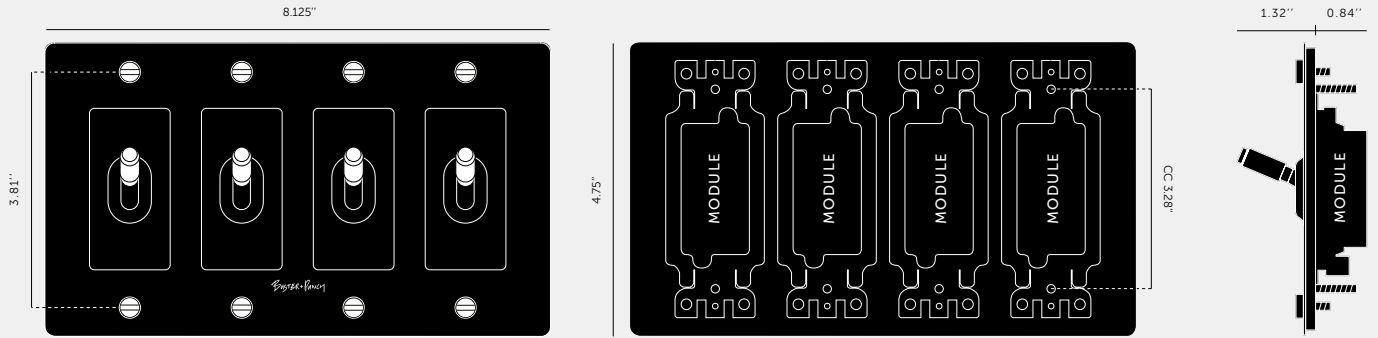
---

[ gang. **4G.** ]

---

[ info. **MEASUREMENTS.** ]

---



---

[ info. **SPECIFICATIONS.** ]

---

Our Metal Electricity range has solid stainless steel plates, in our signature white, steel, brass, smoked bronze and black finishes.

Module: NTM-01384 (US-TO-MO-A) (2 per unit)  
Style: On/ Off Toggle switch  
120-277V AC /15 A / 60 HZ  
3 way switching (can be controlled from 2 locations)  
Certification: cETLus 5005703

---

[ info. **CERTIFICATION.** ]

---

Plates: Underwriters Laboratories cULus listed for use throughout North America.

Toggle: Intertek cETLus listed number for use throughout North America.

---

[ info. **CARE INSTRUCTIONS.** ]

---

Wipe with damp cloth with no loose hairs, avoid using any chemicals. All finishes are prone to aging.

---

[ please. **NOTE.** ]

---

DISCLAIMER: Always consult a trade professional when installing this toggle switch. Buster + Punch is not responsible for the usage or feasibility of installation requirements. This product is not suitable for damp or wet environments.

**FAQ SHEET**

| <b>CATEGORY</b>  | <b>QUESTION</b>  | <b>ANSWER</b>   |
|------------------|--|---|
| <b>GENERAL</b>   | How do I clean my electricity collection?  | A slightly damp microfiber cloth is best, never use any chemicals as this will damage the metal surface.  |
| <b>TOGGLE</b>    | I need more than 2 switches in the same location. Do I need to have separate plates? | We also offer separate modules and plates up to 4G for larger requirements. Please refer to our website for purchasing options, or contact one of our sales representatives for more information.   |
| <b>TOGGLE</b>    | Are these toggles suitable for 4 way switching? (control from 3 or more locations)   | Unfortunately 4 way switching is not supported on this module yet. Please ask one of our sales team if this will be available from us in the near future.   |
| <b>TOGGLE</b>    | Are these toggle switches compatible with smart home systems?                        | This toggle performs a latching on-off function only. Although each smart home system is different, most require a momentary or 'normally open' switches to function properly. Please ask one of our sales team if this will be available from us in the near future.   |
| <b>CUSTOMIZE</b> | Can I customize the appearance of my toggle switch?                                  | Our toggle modules are customizable with interchangeable details kits in 5 finishes. Refer to our website for options, or contact one of our sales representatives for more information.  |
| <b>CUSTOMIZE</b> | Can I combine different modules on the same plate?                                   | Our plates are designed to fit a combination of modules, from 1-4G. Please refer to our website for options, or contact one of our sales representatives for more information.  |
| <b>INSTALL</b>   | Will this dimmer work with my existing wall box?                                     | Please reference the key dimensions of the module and mounting holes when checking compatibility. To ensure a flush fit to the wall, we always recommend flush mounted wall boxes, which are widely available from major retailers.                                     |
| <b>INSTALL</b>   | Can I install my toggle myself?  | We strongly recommend that our products are always installed by a qualified electrician. Always refer to the safety notices within the instruction manual before attempting any electrical installation.  |
| <b>TOGGLE</b>    | Are your toggle modules tested for use throughout North America?                     | Yes, our modules are certified for use throughout North America.<br><br>Module cETLus listed number: 5005703<br>Conforms to UL STD. 20" Certified to CSA STD. C22.2 NO. 111<br>All modules are marked with the listed number.<br><br>Plate cULus listed number: 507052. |