



**UPSKR100**  
Design by Manuel Vivian

Collection of ceiling lamps in flame-retardant TREVIRA@CS fabric (100% polyester Glow wire 960 °C), available in several sizes and colors. The fabric can also come in a double-layer version with an exterior black net fabric.

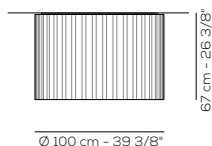
Typology: CEILING

- Ratings**
- E26 or GU24 LED bulbs included or Built in **LED** module
  - Downlight
  - Surface installation over holes
  - Power supply 120V AC
  - Switch mode: on-off
  - Steel frame

- GU24 LED VERSION**
- CCT 2700 K, CRI 80
  - Dimmable ELV trailing edge, phase cut LED bulbs

**UP SKR 100**

lb 22 ft³ 37.43



Product code composition

**SKIRT** diffuser INCLUDED

Type	Article	Exterior Net	Fabric Colours	Source
UP	<b>SKR 100 E26</b>	NE black net	BC white	E26 3 x Max 17W LED or 3 x Max 26W fl uo
	<b>SKR 100 LED</b>	XX no black net	AR orange BL blue GR light grey RS red VE light green	LED GU24 3x15W - included 120Vac - CRI 80 diffused beam - 2700K 4800 lm - 107 lm/W <b>LED</b>



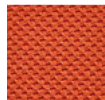
DRY LOCATION

example composition code | **UP** | **SKR100E26** | **XX** | **GR** |

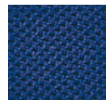
Available colors



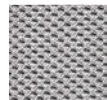
BC White



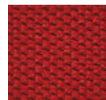
AR Orange



BL Blue



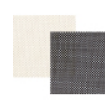
GR Light grey



RS Red



VE Light green



Black net over a white fabric NEBC

UPSKR100\_\_\_\_\_

CUSTOMER\_\_\_\_\_

NOTES\_\_\_\_\_

Luminous flux for all built-in LED luminaires is shown at source level. Technical data could be subject to alteration without notice. Axo Light does not provide legal guarantee for the accuracy of this data sheet.