



USSK1002
Design by Manuel Vivian

Collection of suspended lamps in flame-retardant TREVIRA®CS fabric (100% polyester Glow wire 960 °C), available in several sizes and colors. The fabric can also come in a double-layer version with an exterior black net fabric. A decorative inner lampshade (also printable with customized graphic) is available.

Ratings

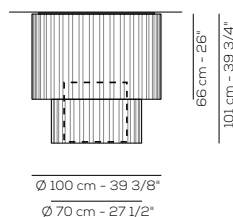
- Downlight and upright
- Surface installation over holes
- Power supply 120V AC
- Switch mode: on-off
- Steel frame

- GU24 LED VERSION**
- CCT 2700 K, CRI 80
 - Dimmable ELV trailing edge, phase cut LED bulbs


Typology: CEILING

UP SK 100 2

lb 35.27 ft³ 37.43



Product code composition
SKIRT diffuser INCLUDED

Type	Article	Exterior Net	Fabric Colours	Source
UP	SK 100 2 E26	NE black net	BC white	E26 3 x Max 17W LED or 3 x Max 26W fl uo
	SK 100 2 LED	XX no black net	AR orange BL blue GR light grey RS red VE light green	LED GU24 3x15W - included 120Vac - CRI 80 diffused beam - 2700K 4800 lm - 107 lm/W 



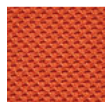
DRY LOCATION

example composition code | **UP** | **SK1002E26** | **XX** | **GR** |

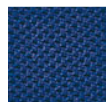
Available colors



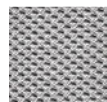
BC
White



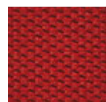
AR
Orange



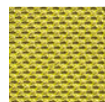
BL
Blue



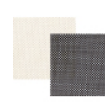
GR
Light grey



RS
Red



VE
Light green



Black net over a
white fabric NEBC

UPSK1002 _____

CUSTOMER _____

NOTES _____

Luminous flux (lm) and efficacy (lm/W) for all built-in LED luminaires is estimated based on nominal ratings of the LED sources. Technical data could be subject to alteration without notice. Axo Light does not provide legal guarantee for the accuracy of this data sheet.