



UPSKR150
Design by Manuel Vivian

Collection of ceiling lamps in flame-retardant TREVIRA@CS fabric (100% polyester Glow wire 960 °C), available in several sizes and colors. The fabric can also come in a double-layer version with an exterior black net fabric.

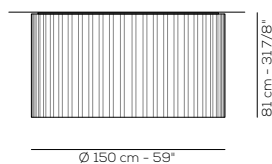
Typology: CEILING

- Ratings**
- E26 or GU24 LED bulbs included or Built in **LED** module
 - Downlight
 - Surface installation over holes
 - Power supply 120V AC
 - Switch mode: on-off
 - Steel frame

- GU24 LED VERSION**
- CCT 2700 K, CRI 80
 - Dimmable ELV trailing edge, phase cut LED bulbs


UP SKR 150

lb 55.11 ft³ 89.69



Product code composition

SKIRT diffuser INCLUDED

Type	Article	Exterior Net	Fabric Colours	Source
UP	SKR 150 E26	NE black net	BC white	E26 4 x Max 17W LED or 4 x Max 26W fl uo
	SKR 150 LED	XX no black net	AR orange BL blue GR light grey RS red VE light green	LED GU24 4x15W - included 120VAc - CRI 80 diffused beam - 2700K 6400 lm - 107 lm/W 



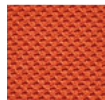
DRY LOCATION

example composition code | **UP** | **SKR150E26** | **XX** | **GR** |

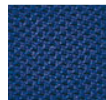
Available colors



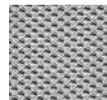
BC White



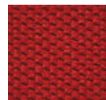
AR Orange



BL Blue



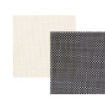
GR Light grey



RS Red



VE Light green



Black net over a white fabric NEBC

UPSKR150_____ CUSTOMER _____ NOTES _____

Luminous flux for all LED luminaires is shown at source level.
Technical data could be subject to alteration without notice. Axo Light does not provide legal guarantee for the accuracy of this data sheet.