



BEYOND MARINA

GO BEYOND THE IMPOSSIBLES.

SINCE 2018



INFLATABLE

STAND UP PADDLEBOARD

User Manual

Table of contents

Ch.	Content	page
1	Product Series	3-4
2	Introduction	5
3	Inflation & Fin Installation	6
4	Deflation & Fin Removal	7
5	Troubleshooting	8-9
6	Warranty	10-11
7	Contact	12



GO BEYOND THE IMPOSSIBLES. SINCE 2018

"The only way to discover the limits of the possible is to go beyond them into the impossible." — Arthur C. Clarke

Beyond Marina® was founded with the vision of providing trustworthy gear which offer an easy and effortless way for nature-lovers to enjoy outdoor activities and embrace challenges. We encourage everyone to explore the world with curiosity and the intention to go beyond their limits — since we've all learned that it is a part of growth. With our innovative, high-tech equipment, Beyond Marina® will be the the one who always support your outdoor adventure, giving you the confidence of achieving your goal, and enable you to take joy in the whole process at the same time.

Trust in your potential and go beyond the impossibles with Beyond Marina®.



BEYOND MARINA SUP

AIRER. SPEEDIER. STEADIER

1. PRODUCT SERIES

DISCOVERY



MINT 11'



BLUE 11'

ALL-ROUND.EPIC



MINT



BLUE



GREY



ORANGE
New



WOOD
New

ALL-ROUND.GOLF



GOLF
New

User Manual

RACING



RACING12'6"

RACING14"

KAYAK



12.5'x31.5"

13.8'x29"

15.3'x32"

2. INTRODUCTION

Safety

Paddleboarding can be dangerous and physically demanding. Always remember to use caution and pay attention to the conditions. High winds are especially dangerous in the sport of SUP and when in doubt, don't go out!

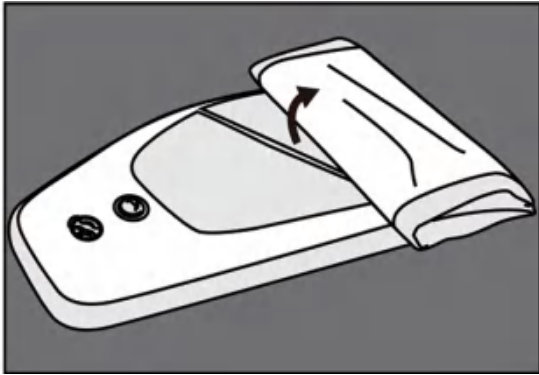
Safety Check List

- When learning to paddle board, always paddle with others
- Wear a leash connecting you to your SUP
- Wear a Personal Flotation Device
- Paddle in safe conditions and be aware of changing weather conditions
- Avoid windy days and other extreme conditions
- When paddling alone, be extremely careful in exercising these safety tips

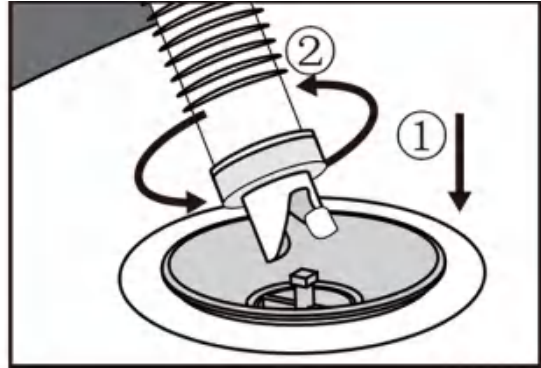
How to Use

- Position yourself at the center of the board by keeping your feet roughly shoulder width apart on either side of the carrying handle. Assume an athletic stance with your knees slightly bent.
- Grip the paddle with one hand on the handle end of the paddle and the other roughly 2 feet below on the shaft of the paddle. Reach the paddle forward on one side of the board and dip the blade of the paddle all the way into the water. Pull the paddle (with blade in water for entire stroke) toward you until it meets about the position that your feet are in and then repeat.
- To keep the board going in one direction ensure that you use the same number of paddle strokes on either side of the board. To turn the board to the left paddle on the right side of the board and vice versa to turn the board right.
- To keep the board moving forward, use the same number of paddle strokes on either side of the board. To turn left, simply paddle more strokes on the right hand side of the board, and vice versa to turn right.

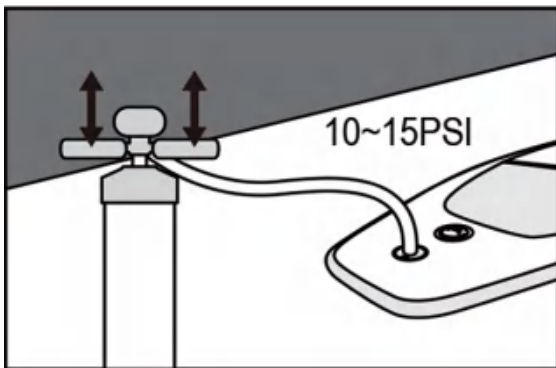
3. Inflation & Fin Installation



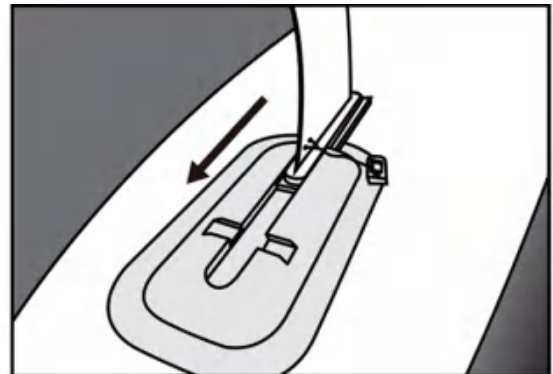
3-1 Unroll



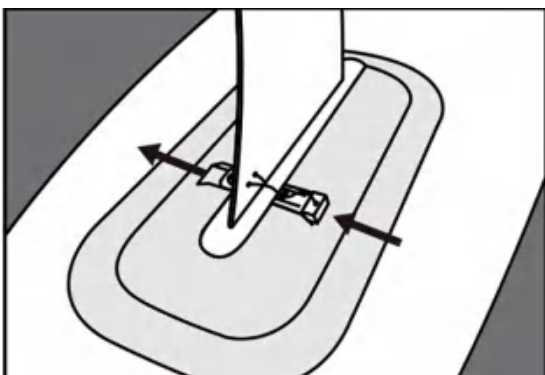
3-2 Pump connection



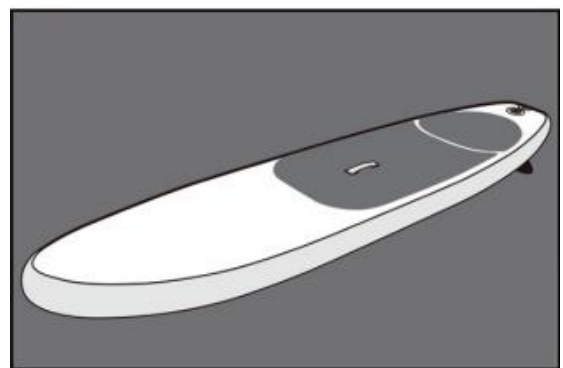
3-3 Inflation



3-4 Slide-in the fin

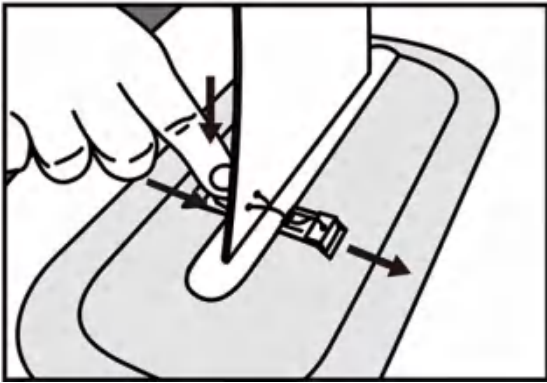


3-5 Clip the fin

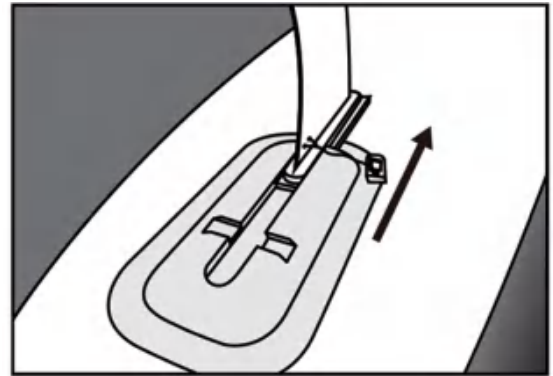


3-6 Finish

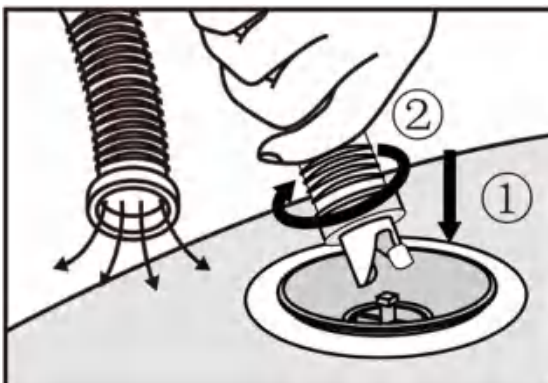
4. Deflation & Fin Removal



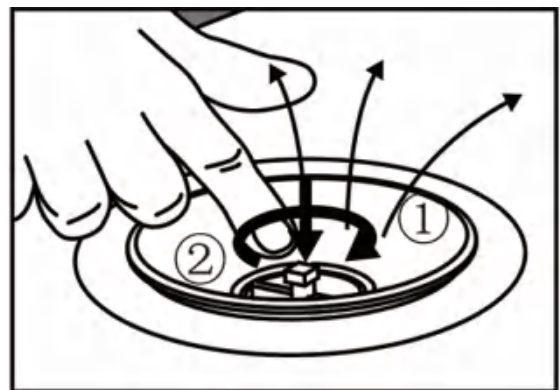
4-1 Drag out the clip



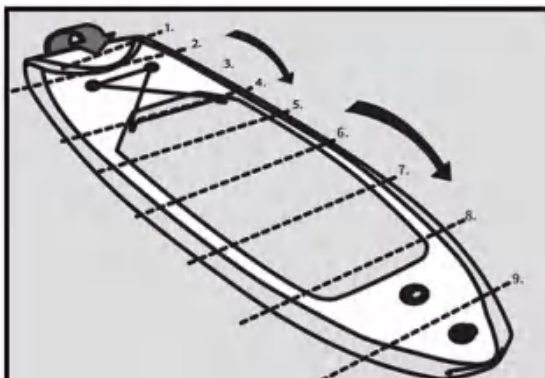
4-2 Removal the fin



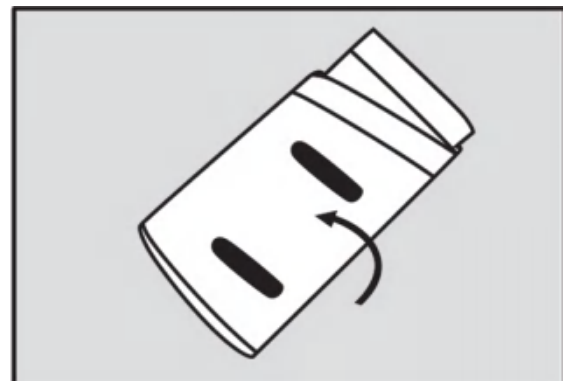
4-3 Pump out the air



4-4 Press to deflation



4-5 Roll up



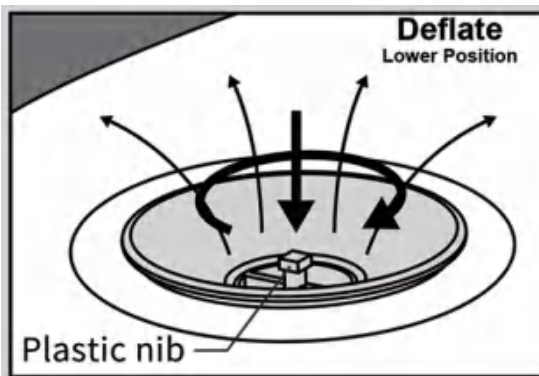
4-6 Finish

5.TROUBLESHOOTING

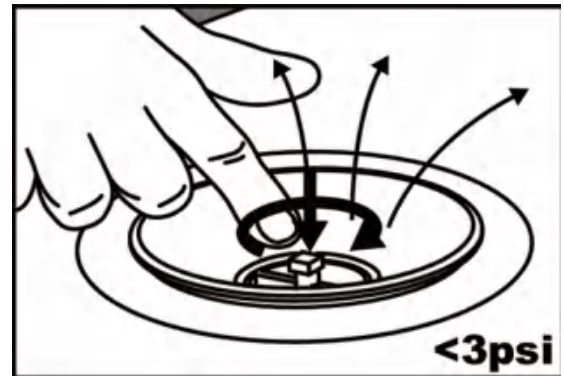
The plastic nib in lower position is for deflation,keep in the upper position is for inflation as well as avoid air-leak.

Matters needing attention:

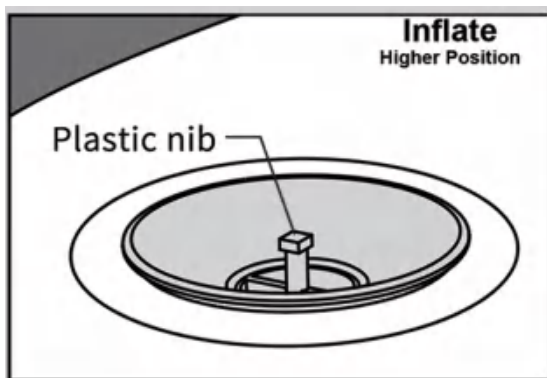
- 1.When there is air-leak from the valve or if the air can not be inflated into the SUP, pls check the position of the plastic nib first, keep it in the upper position.If it's ok,pls follow case 2.(see 5-1 to 5-3)
 - 2.The valve may sometimes loosen, pls use the wrench to tighten it.(see 5-4)
 - 3.If the valve is broken, you can also use the wrench to replace it. (see 5-5)
- See details from below diagram.



5-1

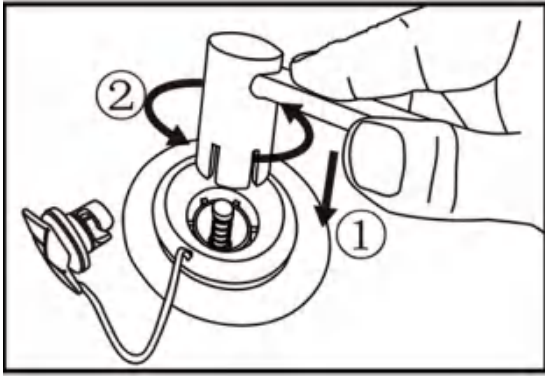


5-2

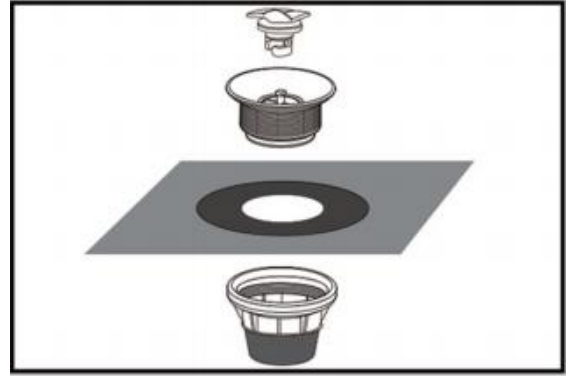


5-3

User Manual



5-4



5-5

Tips

- A few days after you inflate your SUP you may need to add more air due to temperature changes. Use your hand pump to inflate back to 15-17 psi.
- If you are using your board in a very hot or humid environment, inflate to slightly less pressure.
- Never leave your board in direct sunlight or in an area without ventilation.
- Rinse your SUP after every single use and ensure that the valve is free of any sand, dirt, or other debris.

6.WARRANTY

ITEMS NOT COVERED UNDER WARRANTY:

- Commercial use
- Cosmetic issues
- Boards purchased from vendors other than BEYOND MARINA
- Boards purchased in used condition
- Any customer-initiated modifications to the surface of the board

WARRANTY CLAIM:

Contact Us to submit a warranty claim. We will ask you for photos of the product. If you cannot provide photos your warranty claim will be delayed. Once we have received your claim we will contact you within 2-3 business days with a resolution.

PADDLE BOARDS WARRANTY

1 Year Manufacturer Limited Warranty on boards from date of purchase. Abnormal defects in materials and workmanship are guaranteed. We reserve the right to replace or professionally repair the board, accessories, or parts or replace with an equivalent product at no cost to you. This warranty does not cover the claims and/or conditions below:

- Damage or defects caused by use outside the product's intended purpose
- Damage or defects caused by impact with objects or materials (other boards, rocks, sharp objects, docks, etc.)
- Damage or defects caused by transport, loading, dropping, or handling
- Damage or defects considered or caused to be normal wear and tear
- Damage or defects by inappropriate storage in temperatures under 32°F (0°C) or over 90°F (32°C)
- Damage, delam defects caused by over heating and/or exposure to direct sunlight while not in use
- Damage or defects caused by wave impact or impact with lake or sea floor
- Damage or defects caused by storage of the board in closed, damp conditions or by storage of a wet board in closed, damp conditions
- Boards used for commercial purposes
- Damage to the fin or fin box caused by impact to the fin

ACCESSORIES WARRANTY

90 Day Warranty on all Paddles, Pumps, and leashes from the date of purchase against abnormal defects in materials and workmanship. The Warranty does not cover damage or defects resulting from improper storage, misuse, or improper handling of accessories.

1 Year Warranty on all Bags from the date of purchase against abnormal defects in materials and workmanship. The warranty does not cover conditions such as: tears, rips or holes caused by improper handling or abuse, zipper damage caused by improper care or misuse, fading, or damage due to wear and tear.

ACTIVATE YOUR
WARRANTY
NOW

Get A Free Gift On BM Website!



Only valid when honest review is presented after delivered.

Follow us @beyondmarina



YouTube

info@bmsup.com

www.bmsup.com